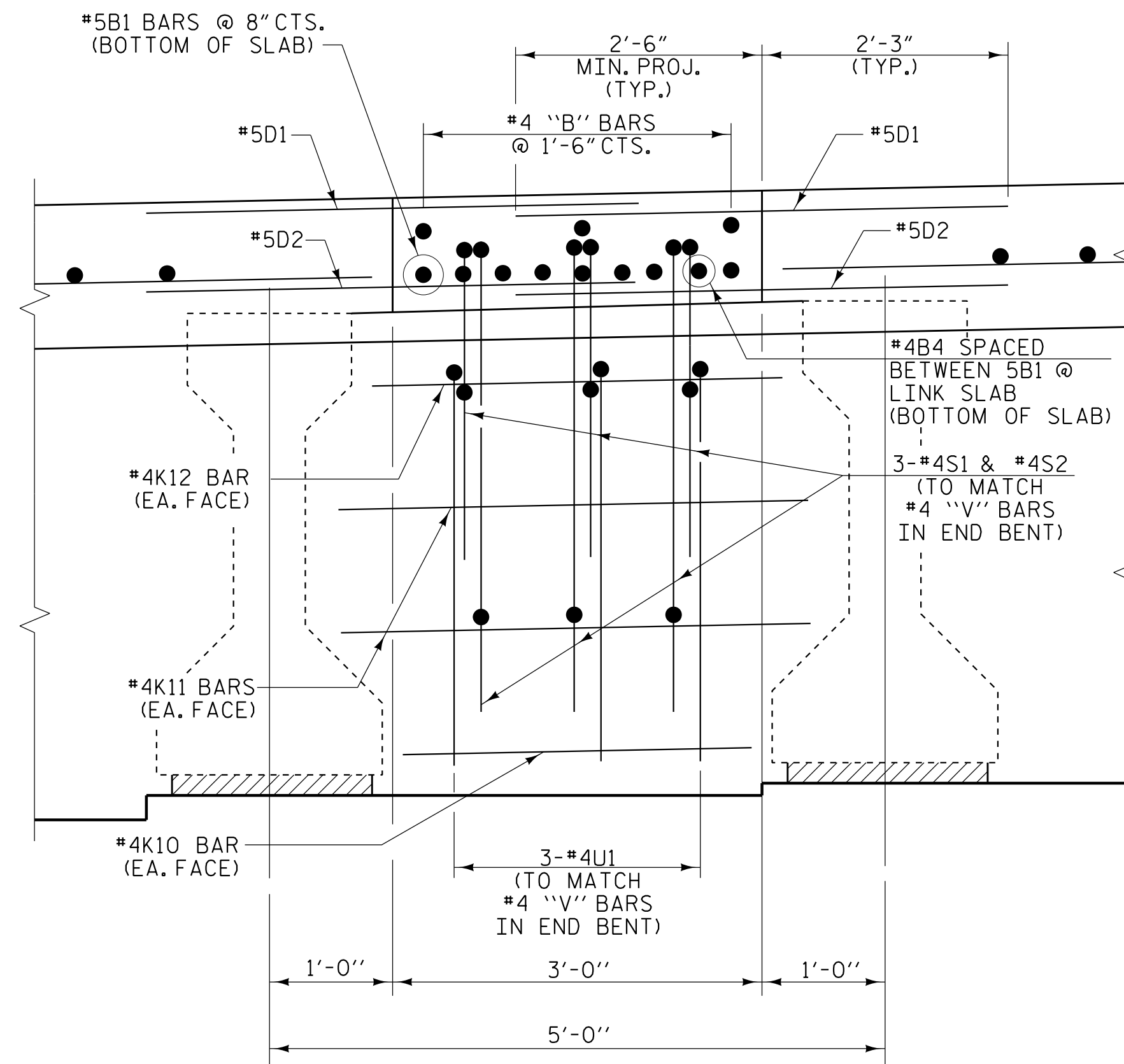
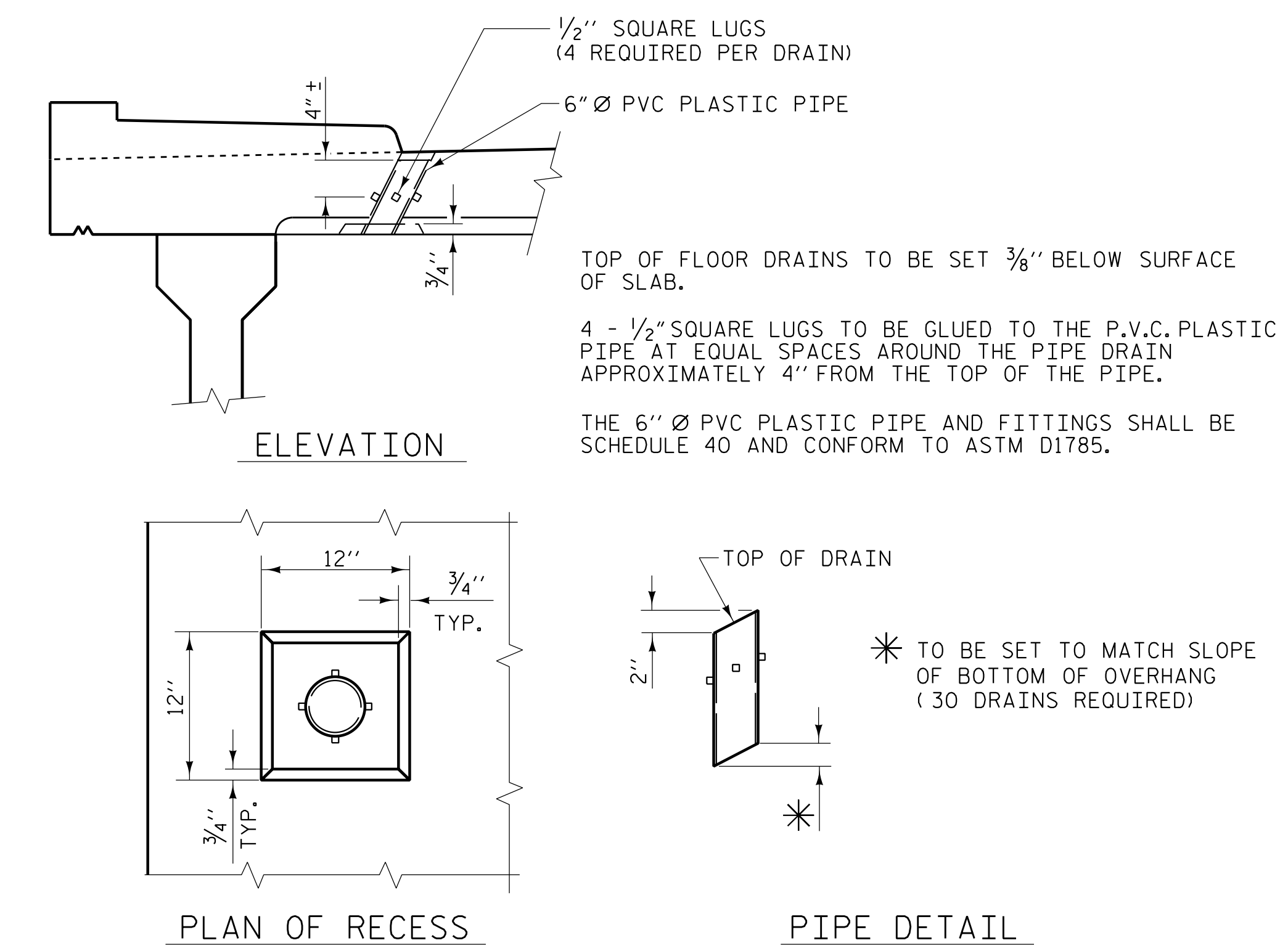


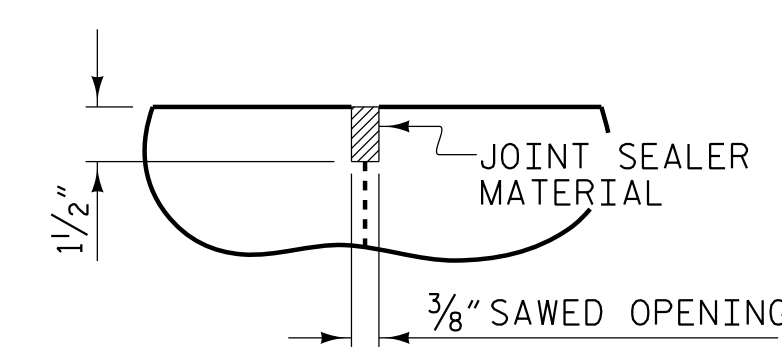
SECTION AT BENT



CLOSURE POUR DETAIL

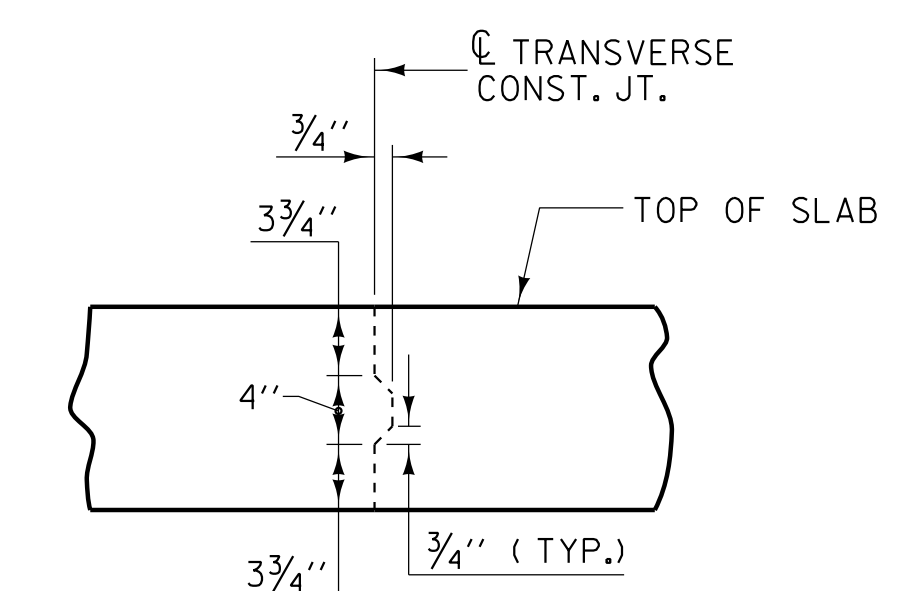


DRAIN DETAILS



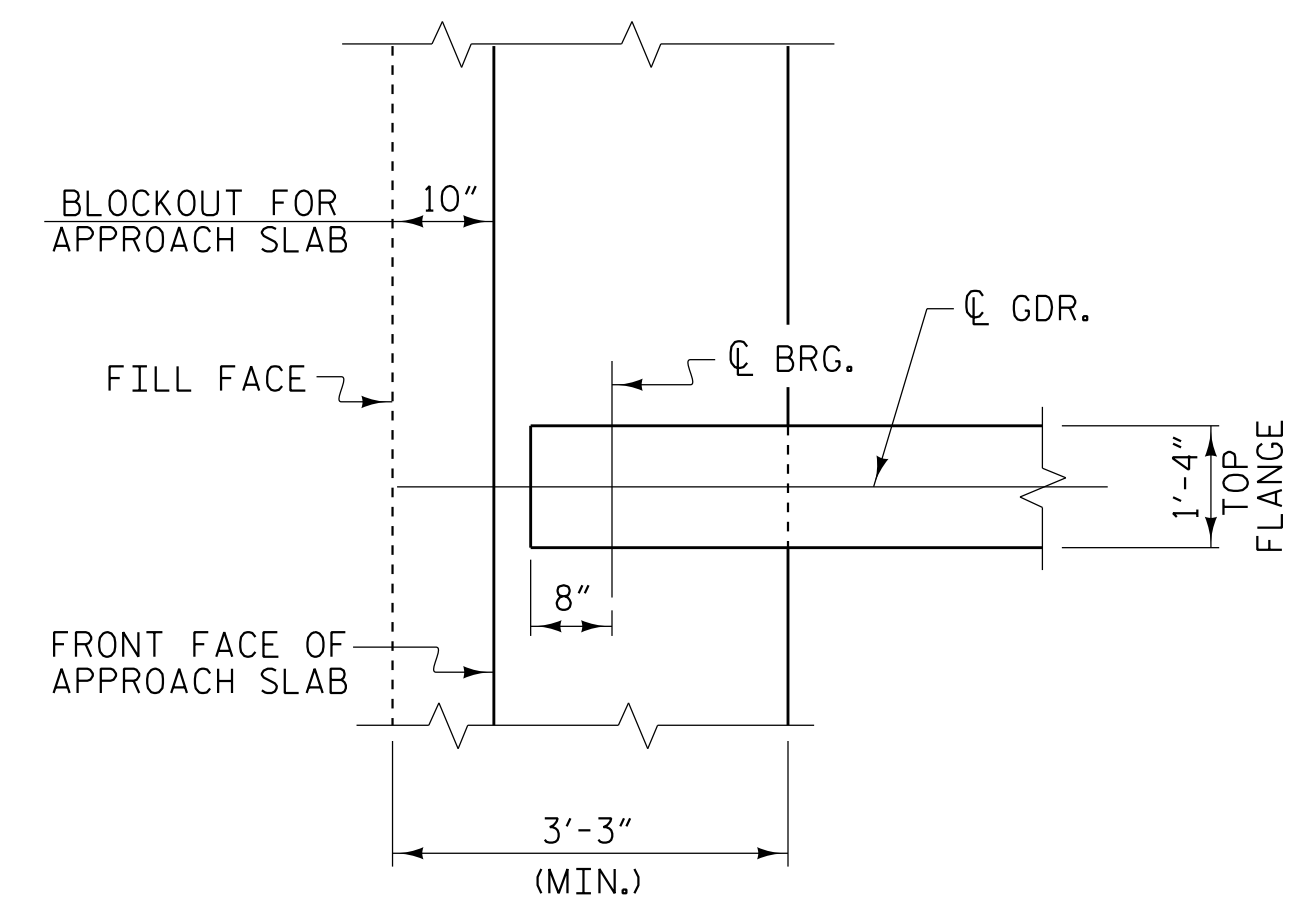
DETAIL "B"

A 1/2" DEEP 3/8" WIDE CONTRACTION JOINT AT BENT CONTROL LINE SHALL BE SAWN WITHIN 24 HOURS OF POURING THE DECK. THE JOINT SHALL BE FILLED WITH JOINT SEALER MATERIAL. THE JOINT SEALER MATERIAL SHALL CONFORM TO THE REQUIREMENTS OF SECTION 1028-3 OF THE STANDARD SPECIFICATIONS.

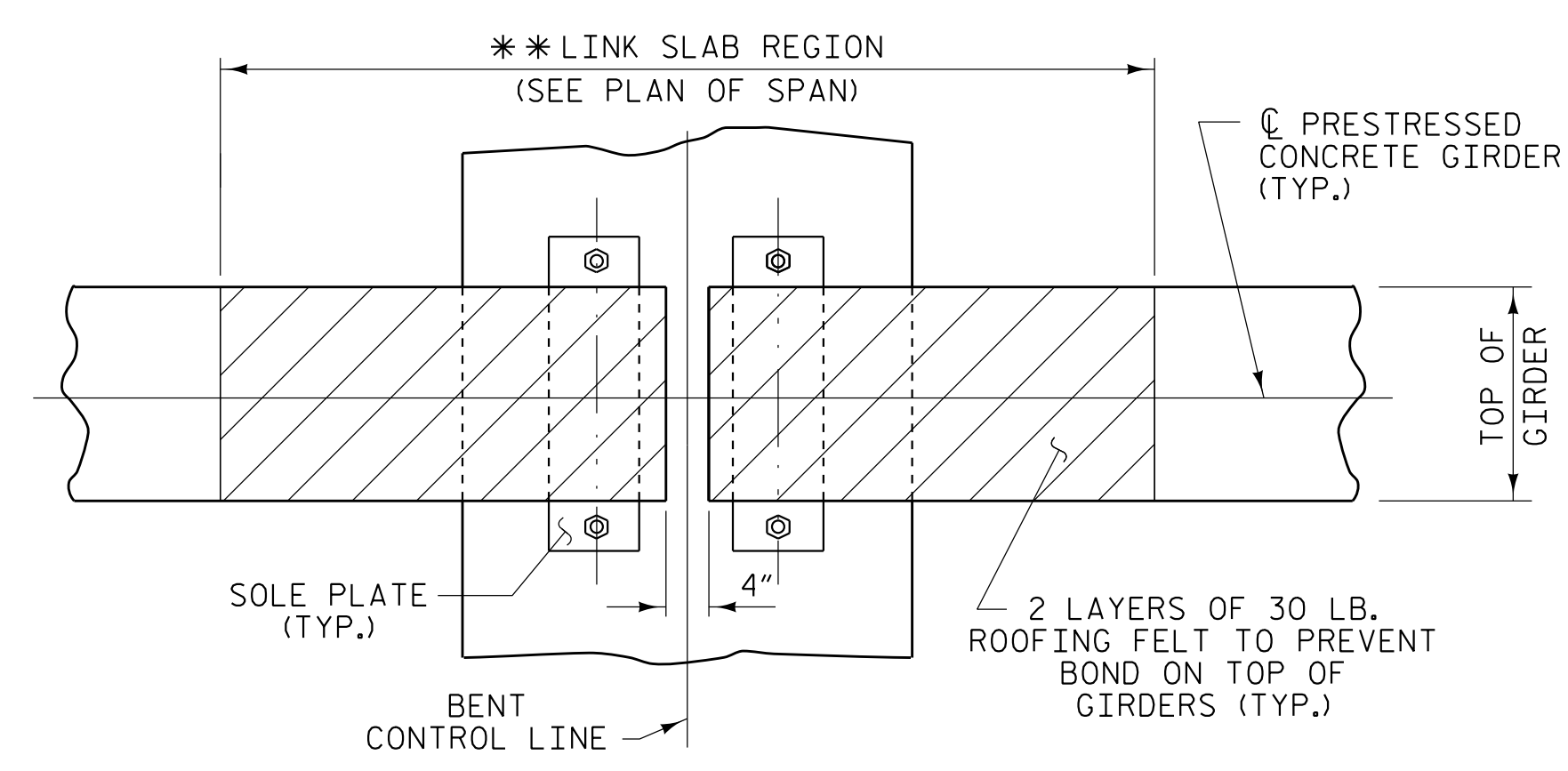


TRANSVERSE CONSTRUCTION JOINT DETAIL

NOTE: REINFORCING STEEL IN SLAB NOT SHOWN. LONGITUDINAL REINFORCING STEEL SHALL BE CONTINUOUS THRU JOINT



PLAN OF GIRDER AT END BENT



PLAN OF GIRDERS AT BENT

** THE TOP OF THE BEAM IN THE REGION OF THE LINK SLAB SHALL BE SMOOTH (NOT RAKED) AND FREE OF STIRRUPS, ANCHOR STUDS, DECK FORMWORK ATTACHMENTS AND OVERHANG FALSEWORK/FORMWORK ATTACHMENTS.

PLANS PREPARED BY:

NV5

NV5 ENGINEERS & CONSULTANTS, INC.
3300 REGENCY PARKWAY, SUITE 100
CARY, NC 27518
P: 919.851.1912 www.NV5.com
NC License # F-1333

DocuSigned by:

ROBERT C. LARSON

PROFESSIONAL ENGINEER
14114

5/19/2023

PROJECT NO. U-5839
HAYWOOD COUNTY
 STATION: 31+45.00 -L- POT

SHEET 5 OF 5

STATE OF NORTH CAROLINA
 DEPARTMENT OF TRANSPORTATION
 RALEIGH

SUPERSTRUCTURE
 TYPICAL SECTION

REVISIONS				SHEET NO.	
NO.	BY:	DATE:	NO.	BY:	DATE:
1			3		
2			4		

TOTAL SHEETS: 49

5/18/2023 10:45:53 AM R:\Structures\Bridges over Richard Creek\10 Ug839_SML_T55_43086.dgn

DRAWN BY: W. B. ALLEN DATE: 5/19
 CHECKED BY: Z. H. BROWN DATE: 7/19
 DESIGN ENGINEER OF RECORD: R. C. LARSON DATE: 2/23

**DOCUMENT NOT CONSIDERED FINAL
 UNLESS ALL SIGNATURES COMPLETED**