

TYPICAL HALF SECTION
(SHOWING INTEGRAL END BENT DIAPHRAGM)

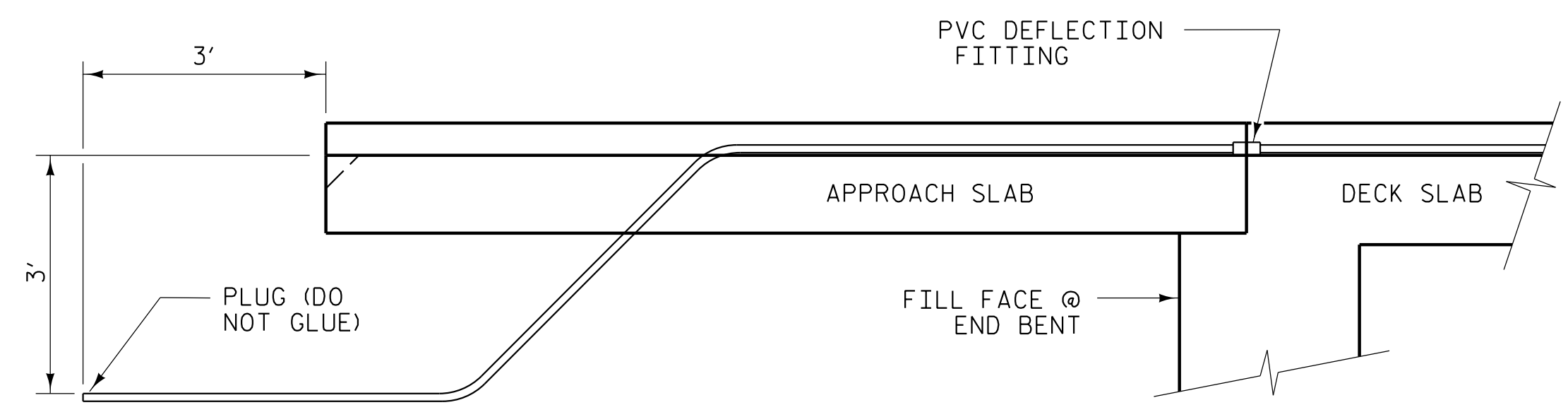
CONDUIT NOTES:

INSTALL CONDUIT IN RIGHT SIDEWALK, FULL LENGTH OF BRIDGE AND APPROACH SLAB. TERMINATE CONDUIT 3' BEYOND APPROACH SLAB AND PLUG 3' BELOW TOP OF SLAB. SEE DETAIL BELOW.

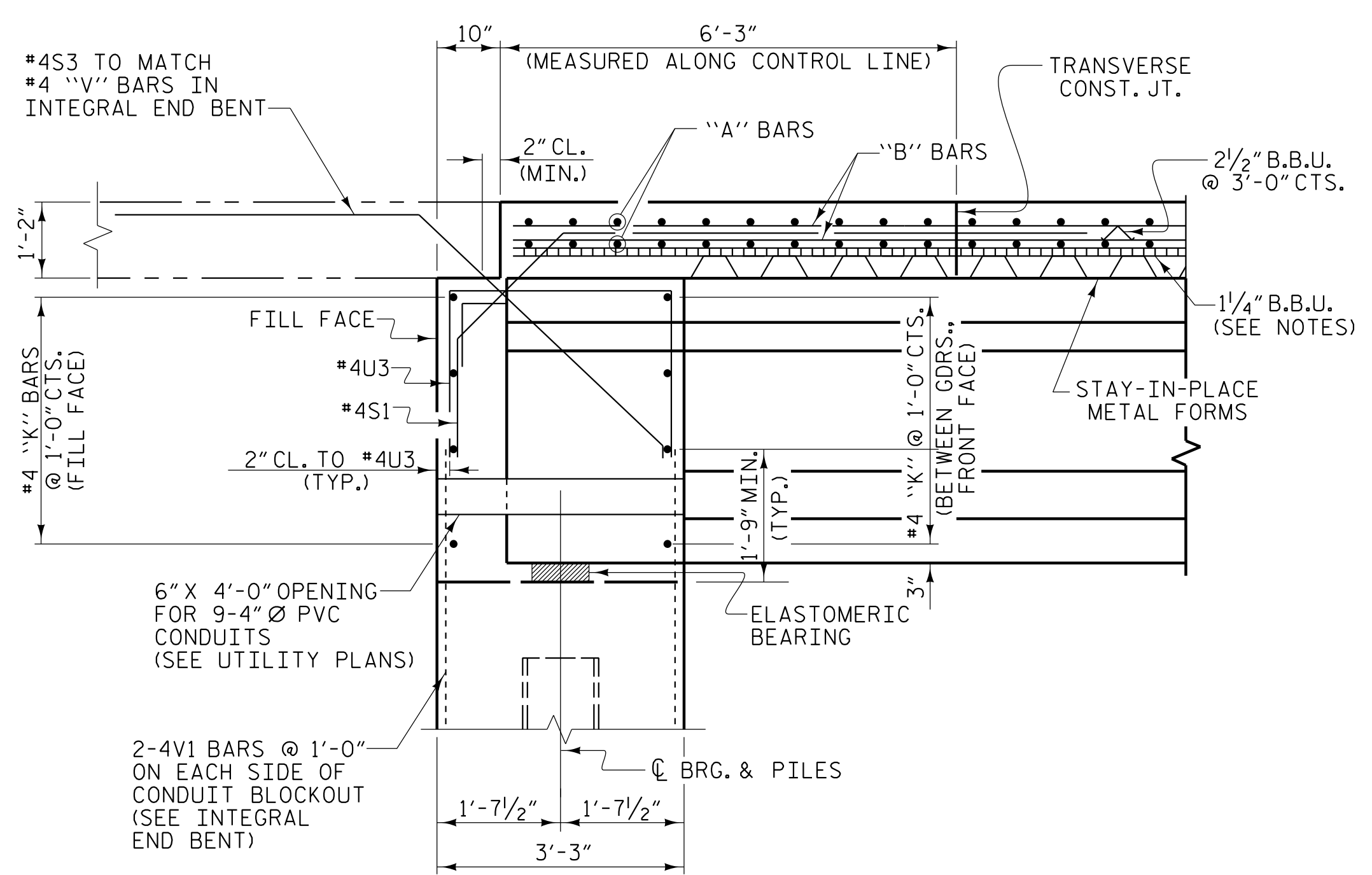
CONDUIT TO BE SCHEDULE 40 PVC AND FASTENED SECURELY TO PREVENT MOVEMENT DURING CONCRETE PLACEMENT. PROVIDE PULL STRING IN EACH CONDUIT, FULL LENGTH OF RUN AND ATTACH TO PLUG AT EACH END.

PROVIDE DEFLECTION JOINT IN CONDUIT AT CONSTRUCTION JOINT AT EACH END BENT.

NO SEPARATE PAYMENT WILL BE MADE FOR THE CONDUIT AS IT IS CONSIDERED INCIDENTAL TO THE DECK SLAB. INCLUDE ALL COSTS ASSOCIATED WITH THIS WORK IN THE PRICE FOR "REINFORCED CONCRETE DECK SLAB."



CONDUIT TERMINATION DETAIL
(ELEVATION VIEW AT APPROACH SLAB)



SECTION THRU INTEGRAL END BENTS
(BAY 8)
(SEE SHEET 1 OF 5 FOR SECTION AT BAYS 6, 7 & 9)

PROJECT NO. U-5839
HAYWOOD COUNTY
 STATION: 31+45.00 -L- POT

SHEET 2 OF 5

STATE OF NORTH CAROLINA
 DEPARTMENT OF TRANSPORTATION
 RALEIGH

SUPERSTRUCTURE
TYPICAL SECTION

PLANS PREPARED BY:

NV15

NVS ENGINEERS & CONSULTANTS, INC.
 3300 REGENCY PARKWAY, SUITE 100
 CARY, NC 27518
 P: 919.851.1912 www.NV5.com
 NC License # F-1333

DocuSigned by:

ROBERT C. LARSON
 PROFESSIONAL ENGINEER
 14114

EEB2398D822047AL

5/19/2023

DOCUMENT NOT CONSIDERED FINAL
UNLESS ALL SIGNATURES COMPLETED

REVISIONS				SHEET NO.	
NO.	BY:	DATE:	NO.	BY:	DATE:
1			3		
2			4		

TOTAL SHEETS: 49

DRAWN BY: W. B. ALLEN DATE: 5/19
 CHECKED BY: Z. H. BROWN DATE: 7/19
 DESIGN ENGINEER OF RECORD: R. C. LARSON DATE: 2/23

DocuSigned by:

ROBERT C. LARSON
 PROFESSIONAL ENGINEER
 14114

EEB2398D822047AL

5/19/2023

5/18/2023 10:44:34 AM R:\Structures\Bridges over Richard Creek\07 U5839-SMU-152-43086.dgn