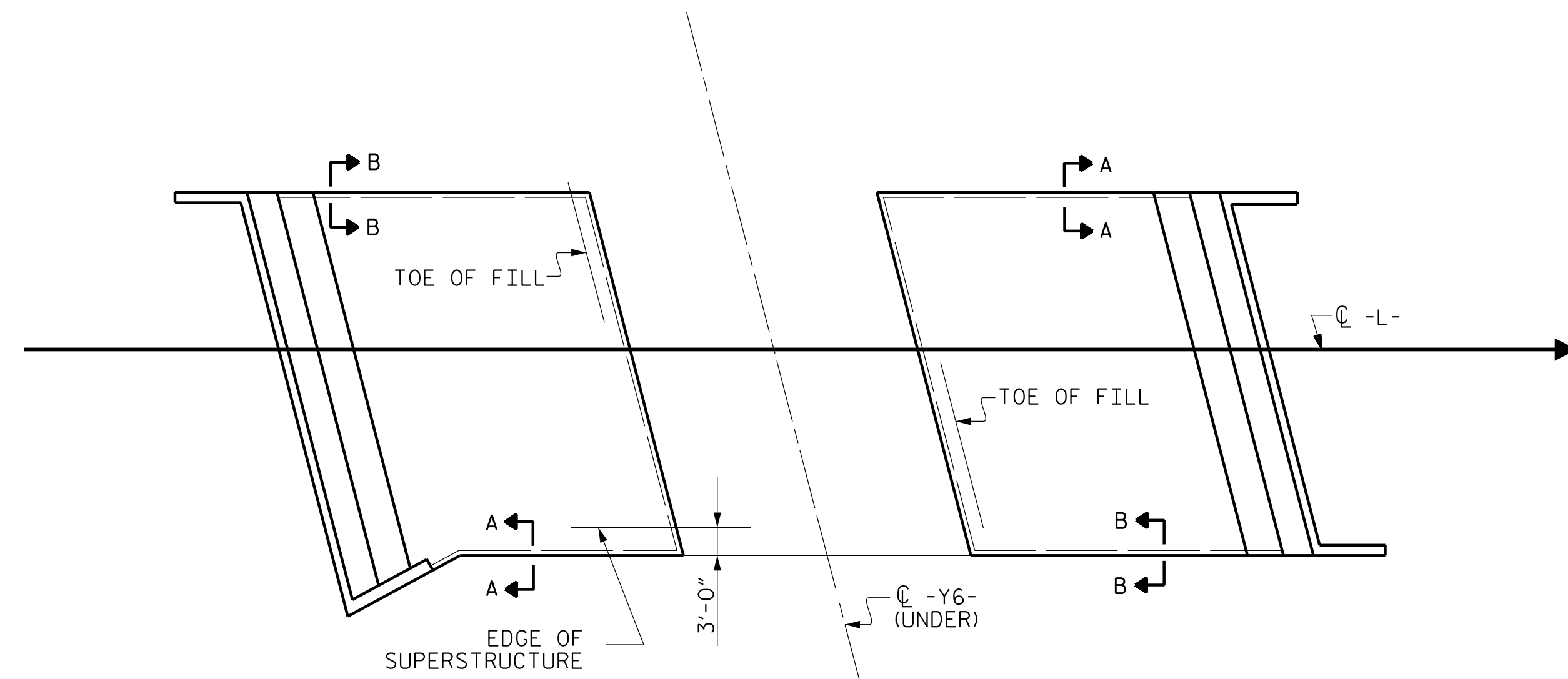


**GENERAL NOTES**

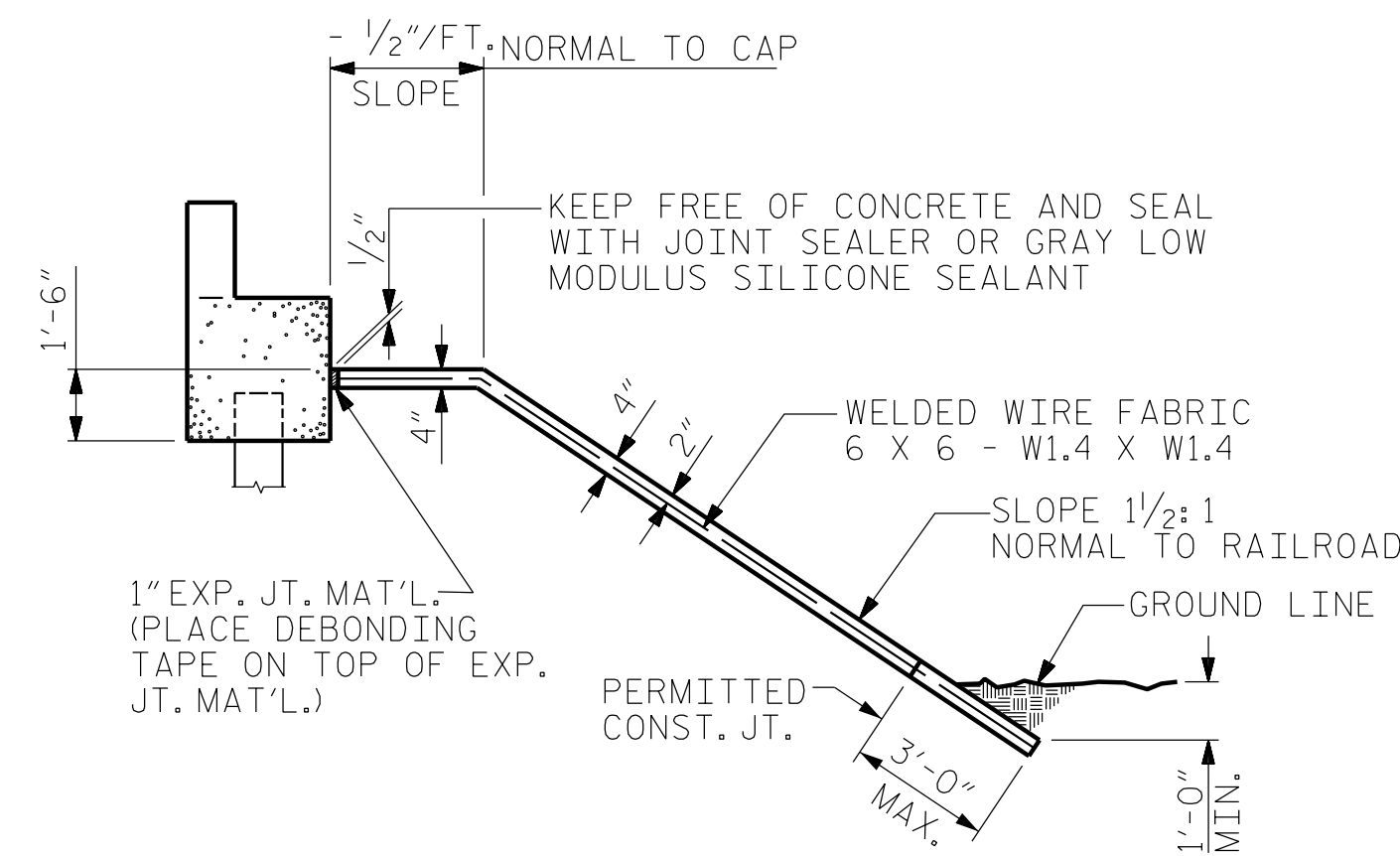
STRAIGHT EDGING WILL NOT BE REQUIRED UNLESS, IN THE OPINION OF THE ENGINEER, VISUAL INSPECTION INDICATES A NEED FOR IT. MEASUREMENT AND PAYMENT SHALL BE AS PRESCRIBED IN SECTION 462 OF THE STANDARD SPECIFICATIONS. FOR BERM WIDTH, SEE GENERAL DRAWING. SLOPE PROTECTION SHALL CONSIST OF 4" POURED-IN-PLACE CONCRETE PAVING AS SHOWN IN THE DETAILS ON THIS SHEET. CONCRETE SHALL BE CLASS "B". THE CONCRETE SURFACE SHALL BE FLOATED WITH A WOODEN FLOAT AND FINISHED. WELDED WIRE FABRIC REINFORCING SHALL BE 6 X 6 - W1.4 X W1.4, 60" WIDE. SLOPE PROTECTION SHALL BE POURED IN 5' STRIPS AS SHOWN IN THE "POURING DETAIL" WITH 2'-0" LONG #4 BARS PLACED ALONG THE SLOPE BETWEEN STRIPS AT 1'-6" MAXIMUM SPACING. SLOPE PROTECTION MAY BE POURED IN ALTERNATE 4' AND 5' STRIPS AS SHOWN IN THE "OPTIONAL POURING DETAIL" WITH ADJACENT RUNS OF WELDED WIRE FABRIC LAPPING AT LEAST 6". THE COST OF THE WELDED WIRE FABRIC AND #4 BARS, IF USED, SHALL BE INCLUDED IN THE CONTRACT UNIT PRICE BID PER SQUARE YARD FOR SLOPE PROTECTION.

BRIDGE @ STA. 24+64.13 -L-	4 INCH SLOPE PROTECTION	* WELDED WIRE FABRIC 60 INCHES WIDE
	SQUARE YARDS	APPROX. L.F.
END BENT 1	600	1080
END BENT 2	520	940

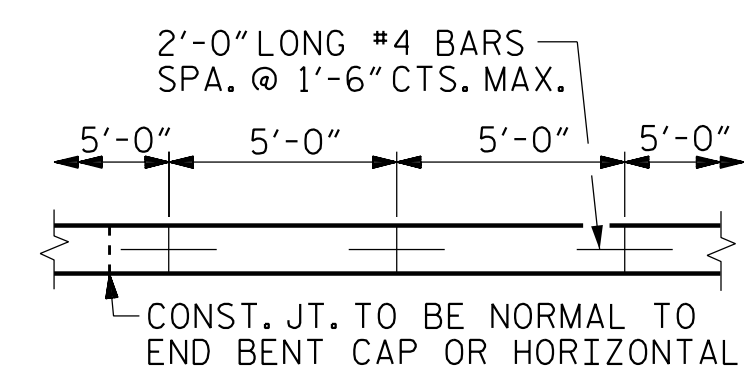
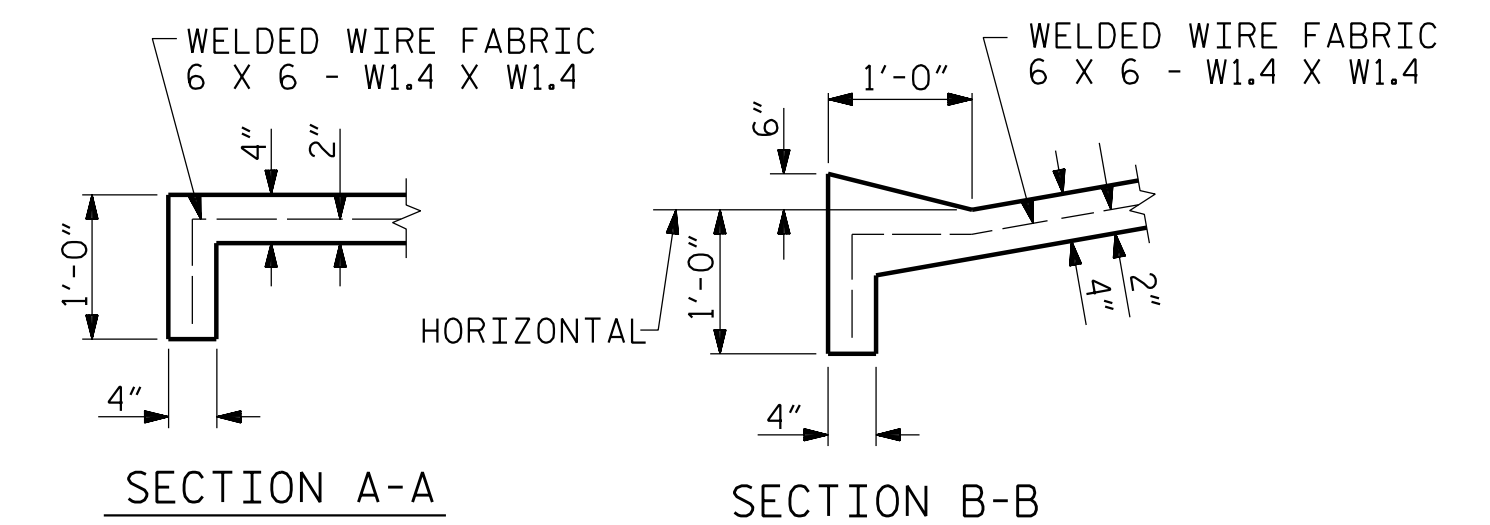
\* QUANTITY SHOWN IS BASED ON 5' POURS.



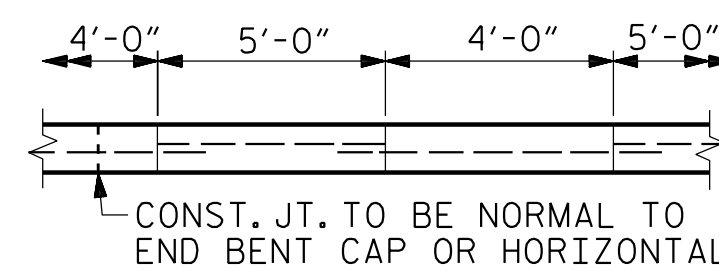
**PLAN**



**SECTION ALONG C-L-L SURVEY WHEN DITCH IS NOT PROVIDED**



**POURING DETAIL**



**OPTIONAL POURING DETAIL**

PLANS PREPARED BY:

**NV5**

NV5 ENGINEERS & CONSULTANTS, INC.  
3300 REGENCY PARKWAY, SUITE 100  
CARY, NC 27518  
P: 919.851.1912 www.nv5.com  
NC License # F-1333

THIS STANDARD DRAWING REVIEWED & ADOPTED FOR USE AT THE REFERENCED LOCATION BY THE UNDERSIGNED:

DocuSigned by:  
[Signature]  
SEAL  
1414  
ENGINEER  
ROBERT C. LARSON  
BEB2398D9220470  
5/18/2023

PROJECT NO. U-5839  
HAYWOOD COUNTY  
 STATION: 24+64.13 -L- POC

SHEET 1 OF 2

STATE OF NORTH CAROLINA  
 DEPARTMENT OF TRANSPORTATION  
 RALEIGH

**STANDARD  
 SLOPE PROTECTION  
 DETAILS**

REVISIONS						SHEET NO.
NO.	BY:	DATE:	NO.	BY:	DATE:	TOTAL SHEETS
1			3			63
2			4			

S1-57

DESIGN ENGINEER OF RECORD : **R. C. LARSON**

ASSEMBLED BY : **W. B. ALLEN** DATE : 1/20  
 CHECKED BY : **Z. H. BROWN** DATE : 7/20

DRAWN BY : ELR 5/92 MAA/GM  
 CHECKED BY : GRP 6/92 REV. 12/21/11 MAA/TMG  
 REV. 1/16 MAA/THC  
 REV. 12/17

DocuSigned by:  
[Signature]  
BEB2398D9220470

**DOCUMENT NOT CONSIDERED FINAL  
 UNLESS ALL SIGNATURES COMPLETED**