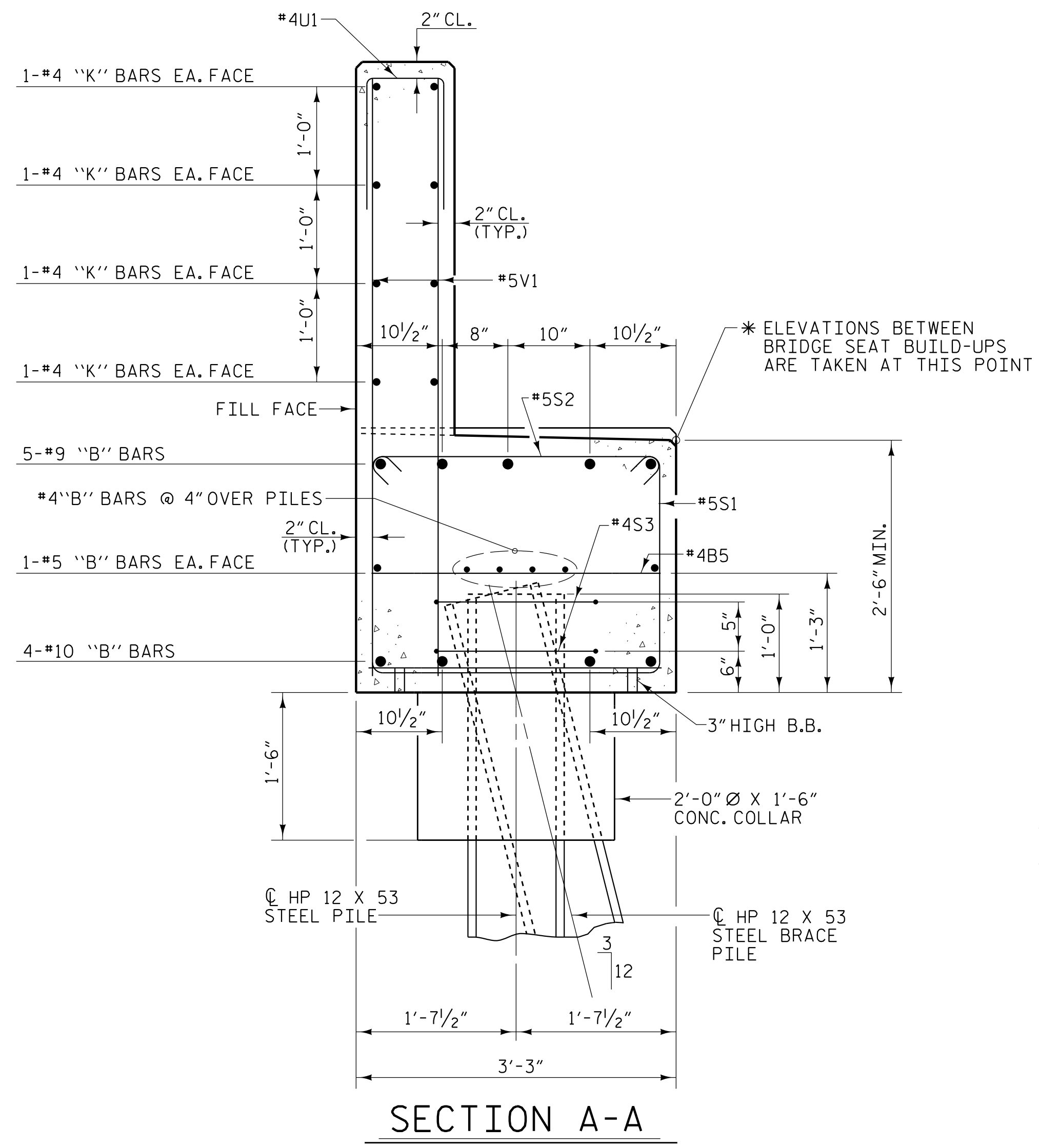
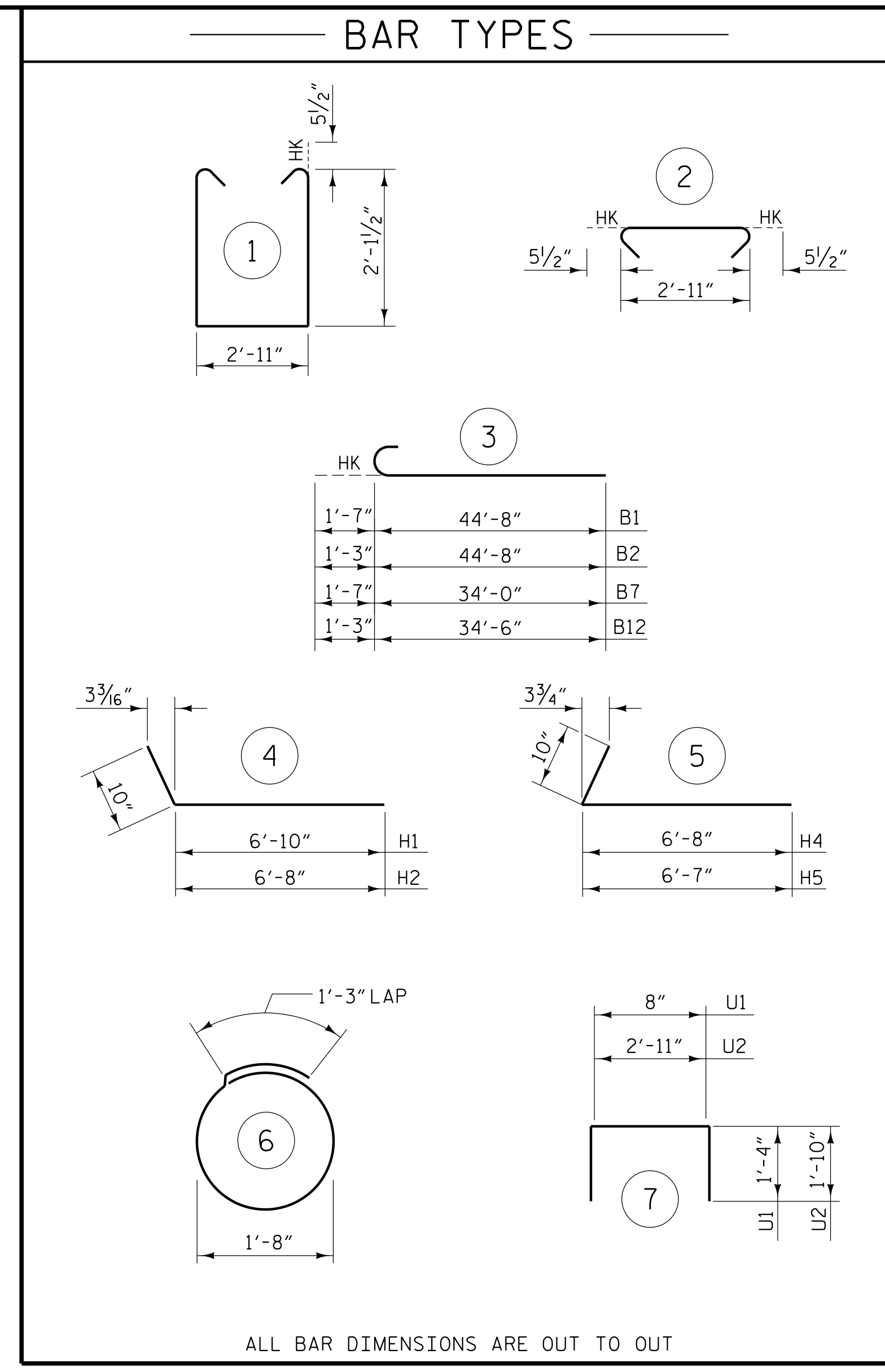


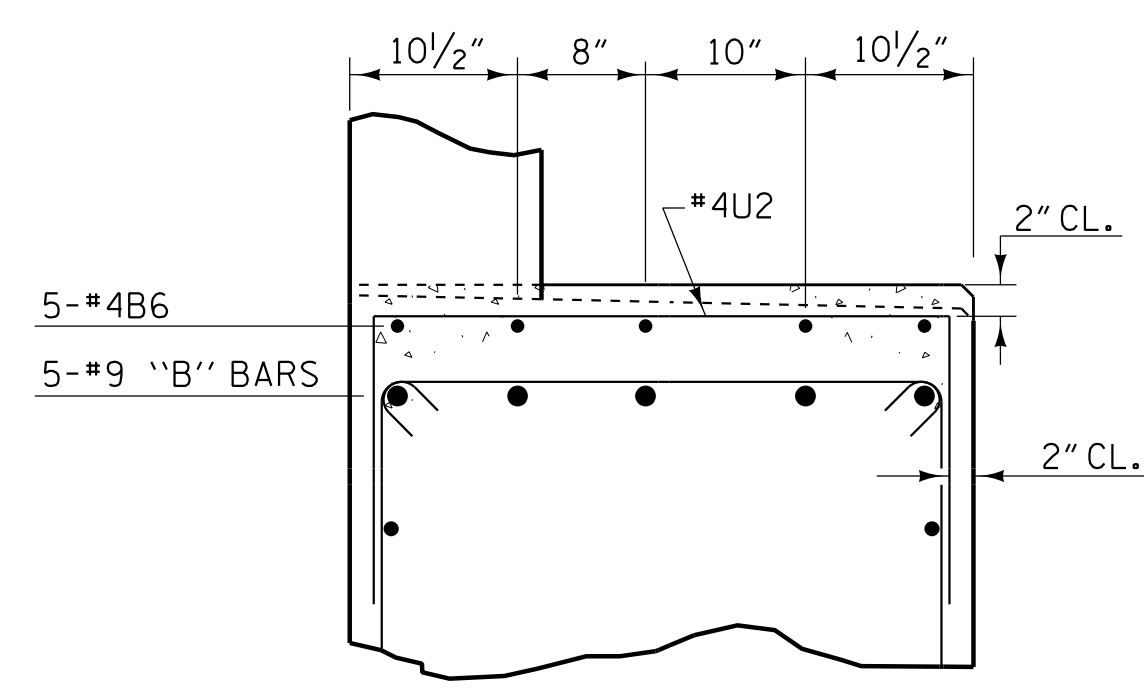
PILE SPLICE DETAILS



SECTION A-A



PART SECTION B-B



END BENT 2-STAGE I						END BENT 2-STAGE II							
BAR	NO.	SIZE	TYPE	LENGTH	WEIGHT	BAR	NO.	SIZE	TYPE	LENGTH	WEIGHT		
B1	4	#10	3	46'-3"	796	B5	15	#4	STR	2'-11"	29		
B2	5	#9	3	45'-11"	781	B6	10	#4	STR	3'-2"	14		
B3	2	#5	STR	46'-9"	98	B7	4	#10	3	35'-7"	612		
B4	8	#4	STR	24'-4"	130	B8	5	#9	STR	32'-0"	544		
B5	11	#4	STR	2'-11"	21	B9	4	#10	STR	31'-9"	546		
B6	10	#4	STR	3'-2"	21	B10	8	#4	STR	31'-9"	170		
						B11	8	#5	STR	32'-0"	267		
H1	10	#4	4	7'-8"	51	B12	5	#9	3	35'-9"	608		
H2	10	#4	4	7'-6"	50								
H3	4	#4	STR	5'-2"	14	H4	10	#4	5	6'-6"	43		
						H5	10	#4	5	7'-5"	50		
K1	8	#4	STR	24'-4"	130	H6	4	#4	STR	5'-3"	14		
S1	37	#5	1	8'-1"	312	K2	8	#4	STR	25'-3"	135		
S2	37	#5	2	3'-10"	148								
S3	10	#4	6	6'-6"	43	S1	51	#5	1	8'-1"	430		
						S2	51	#5	2	3'-10"	204		
U1	38	#4	7	3'-4"	85	S3	14	#4	6	6'-6"	61		
U2	8	#4	7	6'-7"	35								
V1	76	#5	STR	5'-10"	462	U1	54	#4	7	3'-4"	120		
V2	26	#4	STR	7'-10"	136	U2	8	#4	7	6'-7"	35		
						V5	108	#5	STR	5'-10"	657		
						V6	26	#4	STR	7'-11"	137		
TOTAL REINFORCING STEEL						3313 LBS.	TOTAL REINFORCING STEEL						4683 LBS.
CLASS "A" CONCRETE - CU. YARDS							CLASS "A" CONCRETE - CU. YARDS						
POUR 1							POUR 1						
(CAP, COLLARS, LOWER WINGS)						14.6 CU. YDS.	(CAP, COLLARS, LOWER WINGS)						20.5 CU. YDS.
POUR 2							POUR 2						
(UPPER WINGS & BACKWALL)						7.8 CU. YDS.	(UPPER WINGS & BACKWALL)						9.9 CU. YDS.
TOTAL						22.4 CU. YDS.	TOTAL						30.4 CU. YDS.
HP 12 X 53 STEEL PILES							HP 12 X 53 STEEL PILES						
6 PILES REQUIRED - LIN. FEET						330	6 PILES REQUIRED - LIN. FEET						330
PILE DRIVING EQUIPMENT SETUP FOR							PILE DRIVING EQUIPMENT SETUP FOR						
HP 12 X 53 STEEL PILES - EACH						6	HP 12 X 53 STEEL PILES - EACH						6

PROJECT NO. U-5839
HAYWOOD COUNTY
STATION: 24+64.13 -L- POC

SHEET 4 OF 4

STATE OF NORTH CAROLINA
DEPARTMENT OF TRANSPORTATION
RALEIGH
SUBSTRUCTURE
END BENT 2
DETAILS

REVISIONS						SHEET NO.	
NO.	BY:	DATE:	NO.	BY:	DATE:	S1-56	
1			3			TOTAL SHEETS	
2			4			63	

PLANS PREPARED BY:

NV5

NV5 ENGINEERS & CONSULTANTS, INC.
3300 REGENCY PARKWAY, SUITE 100
CARY, NC 27518
P: 919.851.1912 www.NV5.com
NC License # F-1333

DocuSigned by:

BE32398D920470

STATE OF NORTH CAROLINA
PROFESSIONAL ENGINEER
SEAL 1414
ROBERT C. LARSON

5/18/2023

DOCUMENT NOT CONSIDERED FINAL
UNLESS ALL SIGNATURES COMPLETED

DRAWN BY: W. B. ALLEN DATE: 6/20
CHECKED BY: Z. H. BROWN DATE: 6/20
DESIGN ENGINEER OF RECORD: R. C. LARSON DATE: 4/23

DocuSigned by:

BE32398D920470

5/17/2023 7:46:16 PM R:\Structures\3 span Bridge cover RRV56_U5839_SMU_EB_43084.dgn