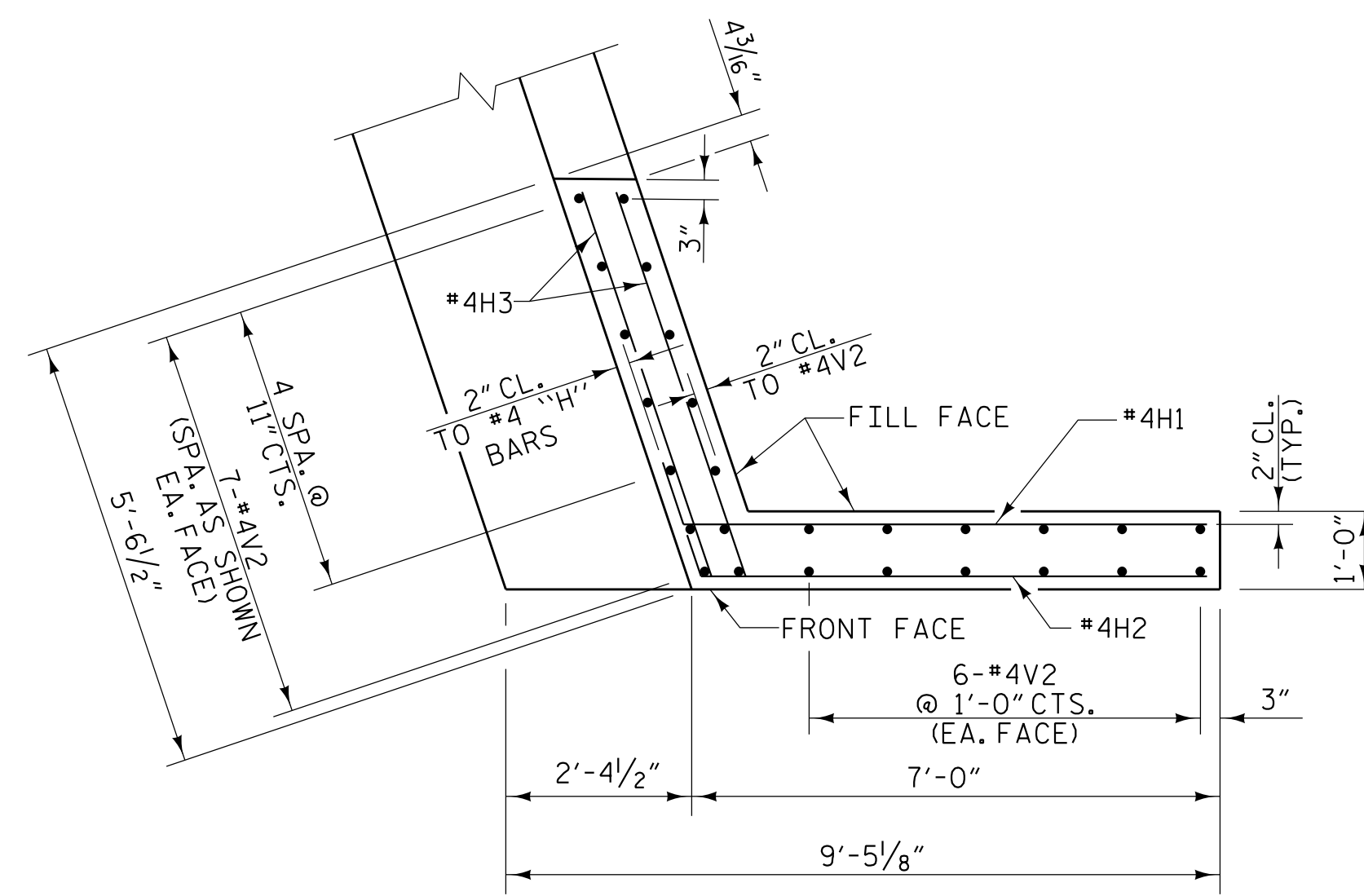


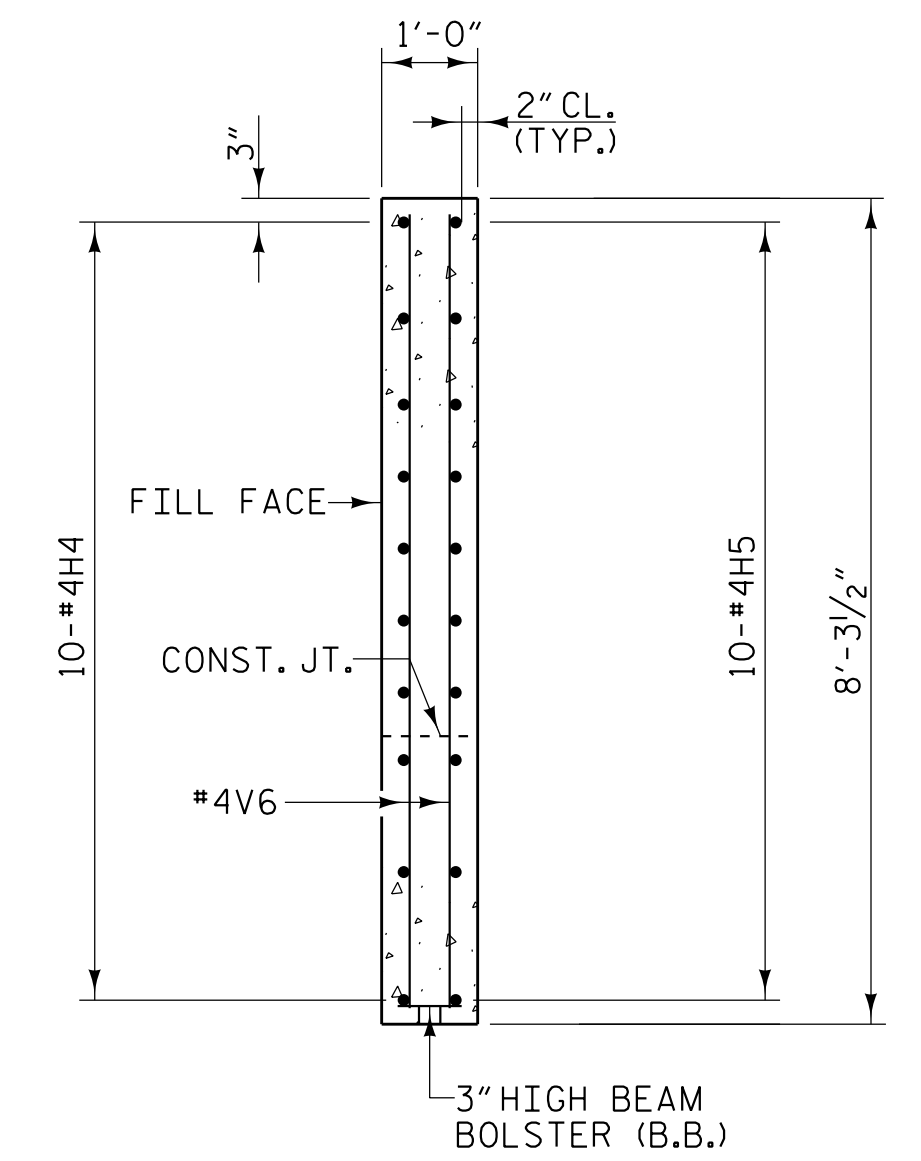
PLAN OF LEFT WING - W1

(STAGE II CONSTRUCTION)

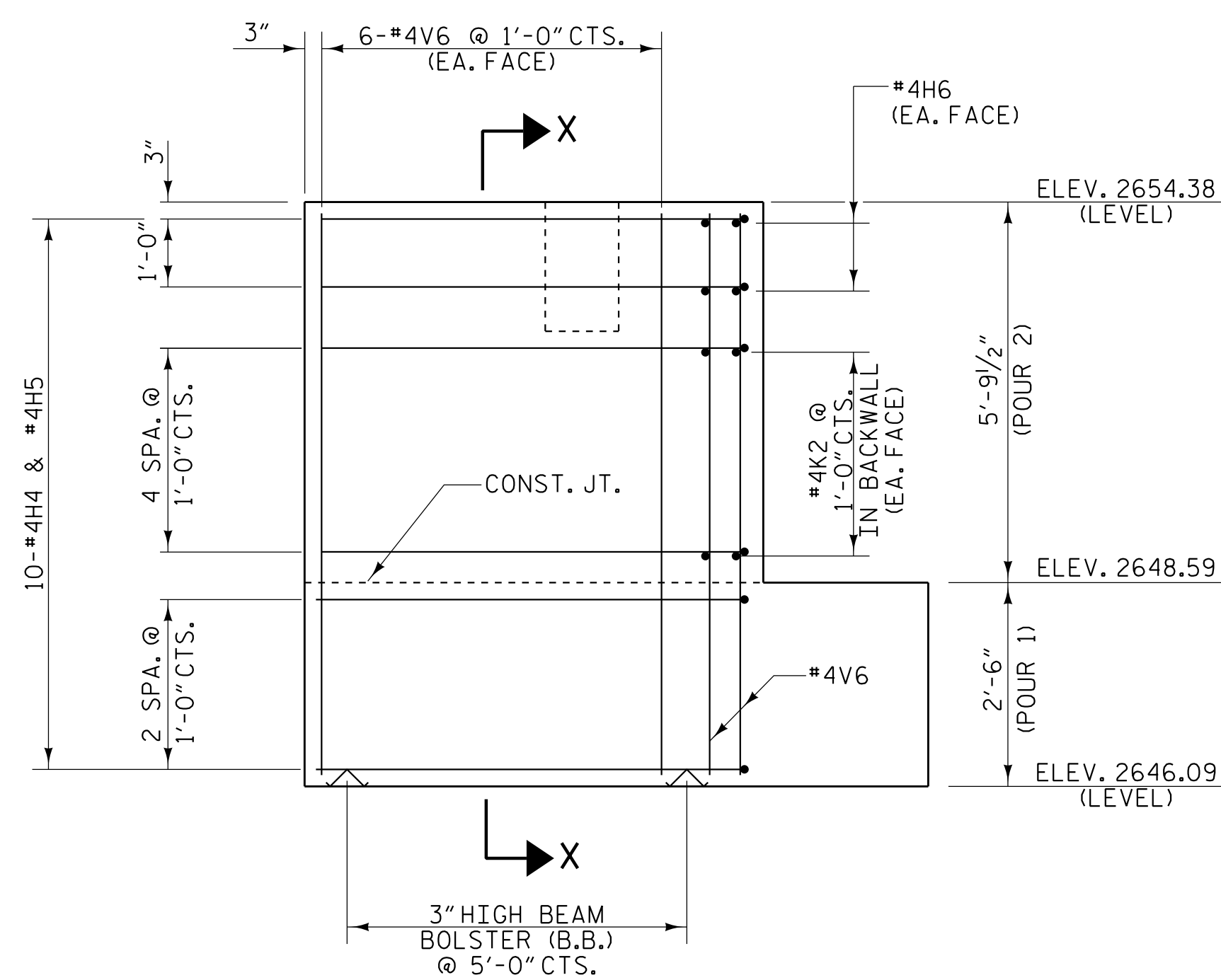


PLAN OF RIGHT WING - W2

(STAGE I CONSTRUCTION)

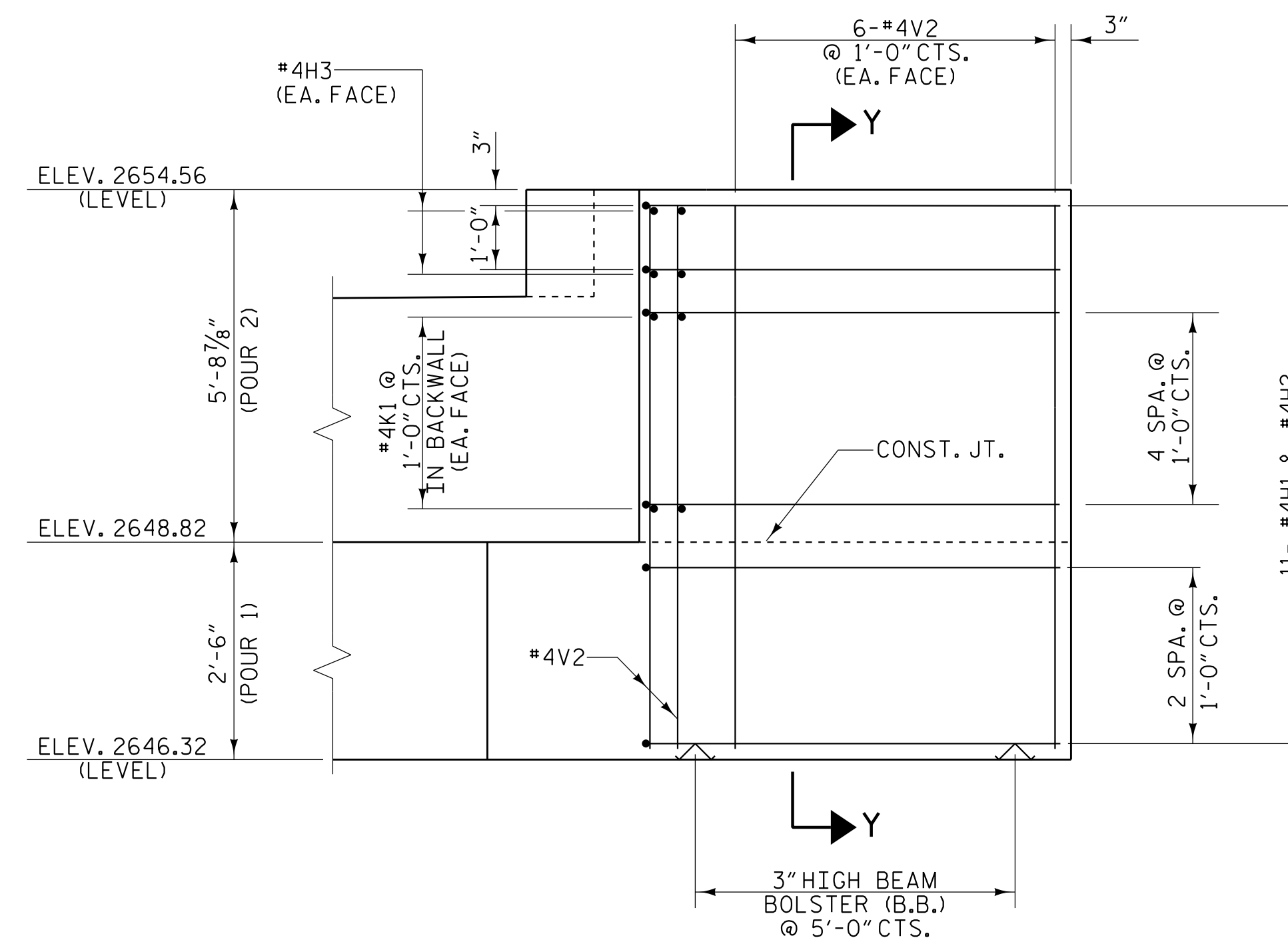


SECTION X-X



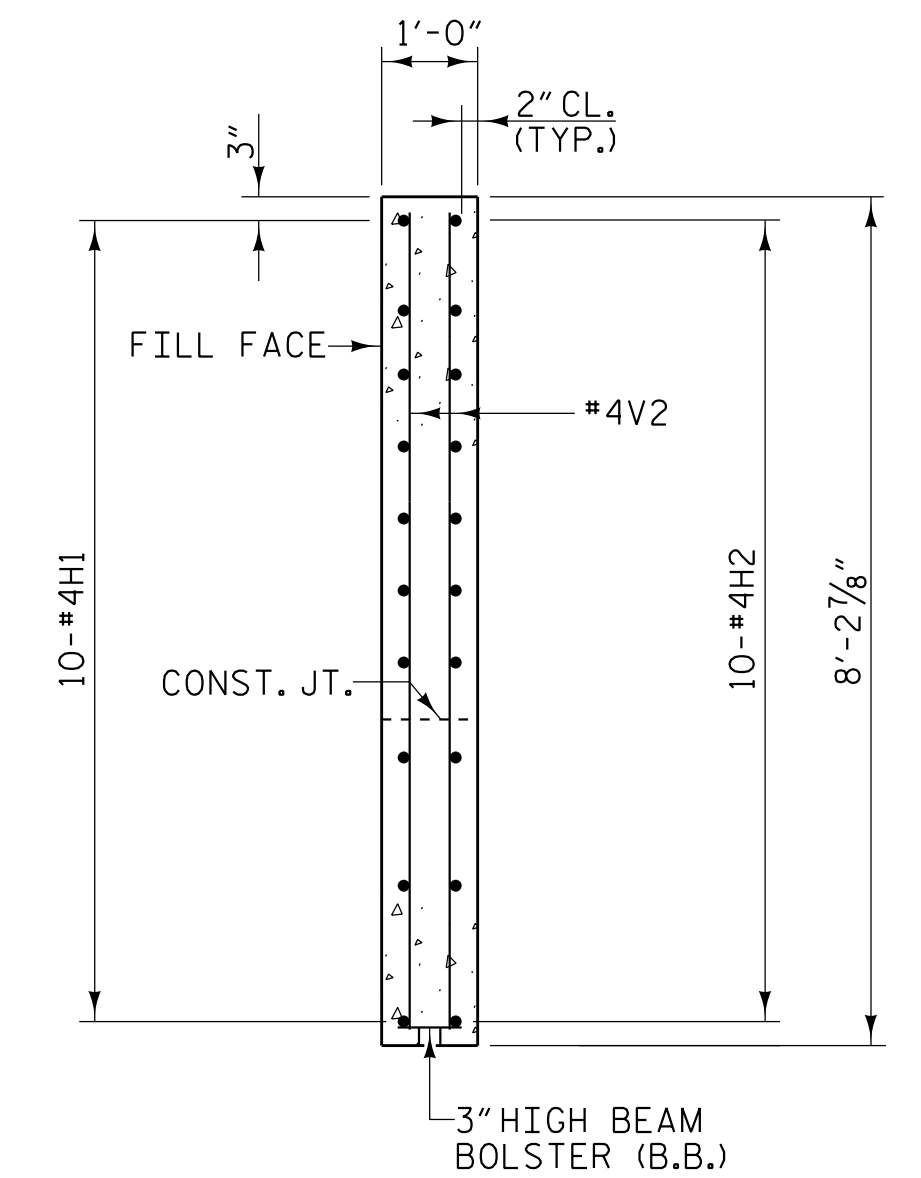
ELEVATION OF LEFT WING - W1

(STAGE II CONSTRUCTION)



ELEVATION OF RIGHT WING - W2

(STAGE I CONSTRUCTION)



SECTION Y-Y

PROJECT NO. U-5839
 HAYWOOD COUNTY
 STATION: 24+64.13 -L- POC

SHEET 3 OF 4

STATE OF NORTH CAROLINA
 DEPARTMENT OF TRANSPORTATION
 RALEIGH

SUBSTRUCTURE
 END BENT 2
 WING DETAILS

REVISIONS

NO.	BY:	DATE:	NO.	BY:	DATE:
1			3		
2			4		

SHEET NO.

S1-55

TOTAL SHEETS

63

PLANS PREPARED BY:

NV5 ENGINEERS & CONSULTANTS, INC.
 3300 REGENCY PARKWAY, SUITE 100
 CARY, NC 27518
 P: 919.851.1912 www.NV5.com
 NC License # F-1333

DocuSigned by:

Robert C. Larson
 BEB2398D9220470...



5/18/2023

DOCUMENT NOT CONSIDERED FINAL
 UNLESS ALL SIGNATURES COMPLETED

5/17/2023 7:06 PM R:\Structures\3 span Bridge over RRV55 US519_SMU.ET_43084.dgn

DRAWN BY: W. B. ALLEN DATE: 6/20
 CHECKED BY: Z. H. BROWN DATE: 6/20
 DESIGN ENGINEER OF RECORD: R. C. LARSON DATE: 4/23

DocuSigned by:
Robert C. Larson
 BEB2398D9220470...