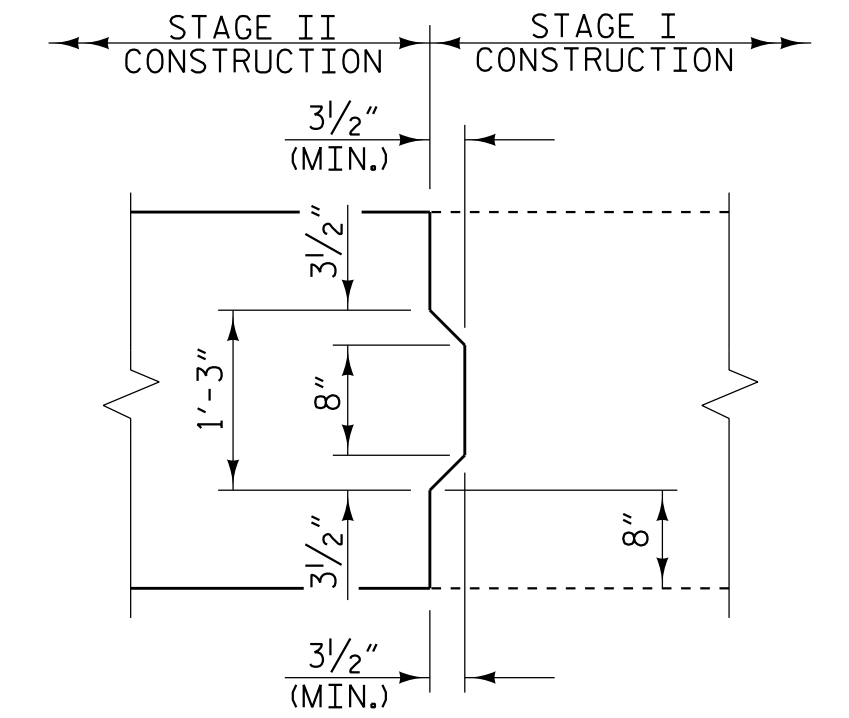
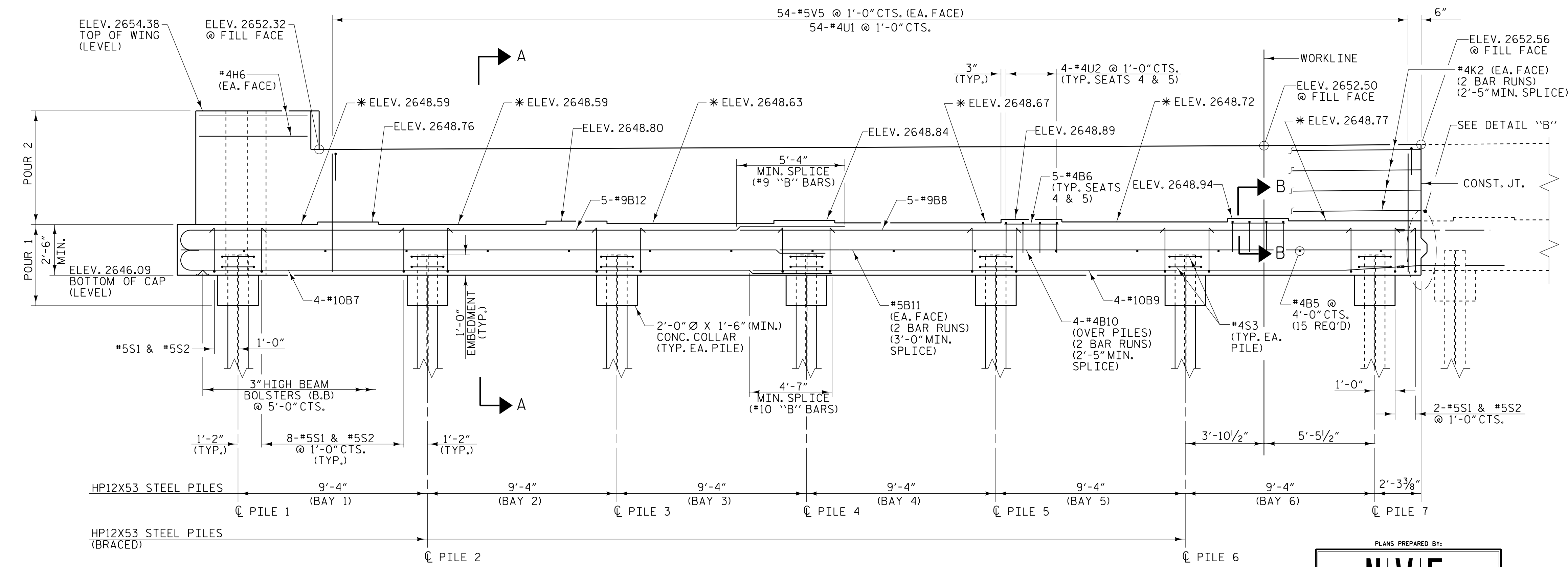


PLAN



DETAIL "B"



ELEVATION

\* FOR LOCATION OF ELEVATIONS BETWEEN BRIDGE SEAT BUILD-UPS. SEE SECTION A-A SHEET 4 OF 4.

PROJECT NO. U-5839  
 HAYWOOD COUNTY  
 STATION: 24+64.13 -L- POC

SHEET 2 OF 4

STATE OF NORTH CAROLINA  
 DEPARTMENT OF TRANSPORTATION  
 RALEIGH

SUBSTRUCTURE  
 END BENT 2  
 STAGE II

PLANS PREPARED BY:  
**NV5**  
 NV5 ENGINEERS & CONSULTANTS, INC.  
 3300 REGENCY PARKWAY, SUITE 100  
 CARY, NC 27518  
 P: 919.851.1912 www.NV5.com  
 NC License # F-1333

DocuSigned by:  
 BEB23809220470  
 SEAL  
 1414  
 ENGINEER  
 ROBERT C. LARSON  
 NC License # 1414

DOCUMENT NOT CONSIDERED FINAL  
 UNLESS ALL SIGNATURES COMPLETED

REVISIONS						SHEET NO.
NO.	BY:	DATE:	NO.	BY:	DATE:	TOTAL SHEETS
1			3			63
2			4			

DRAWN BY: W. B. ALLEN DATE: 5/20  
 CHECKED BY: Z. H. BROWN DATE: 6/20  
 DESIGN ENGINEER OF RECORD: R. C. LARSON DATE: 4/23

DocuSigned by:  
 BEB23809220470

5/18/2023

5/17/2023 7:05 PM R:\Structures\3 span Bridge over RR\54 US54\5839\_SMU\_EG\_43084.dgn