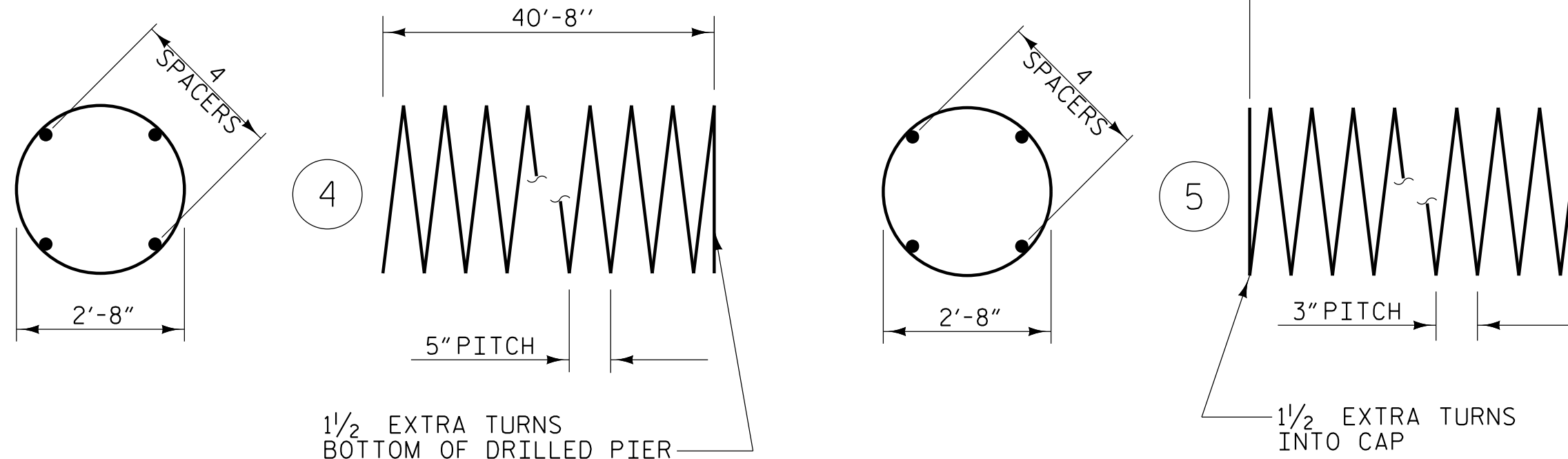
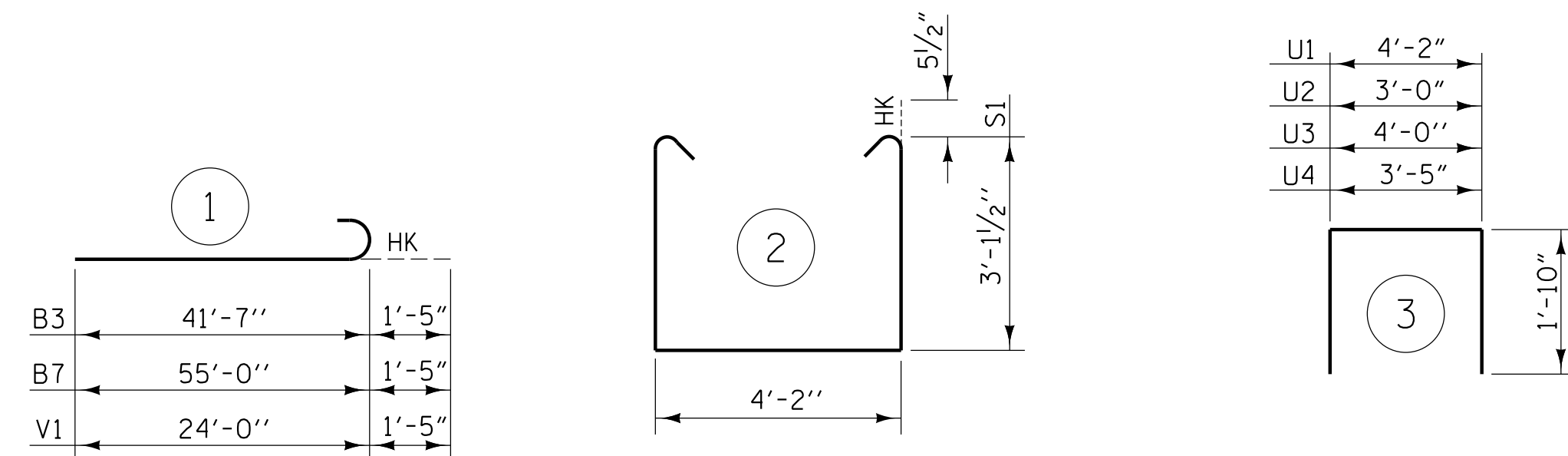


BAR TYPES



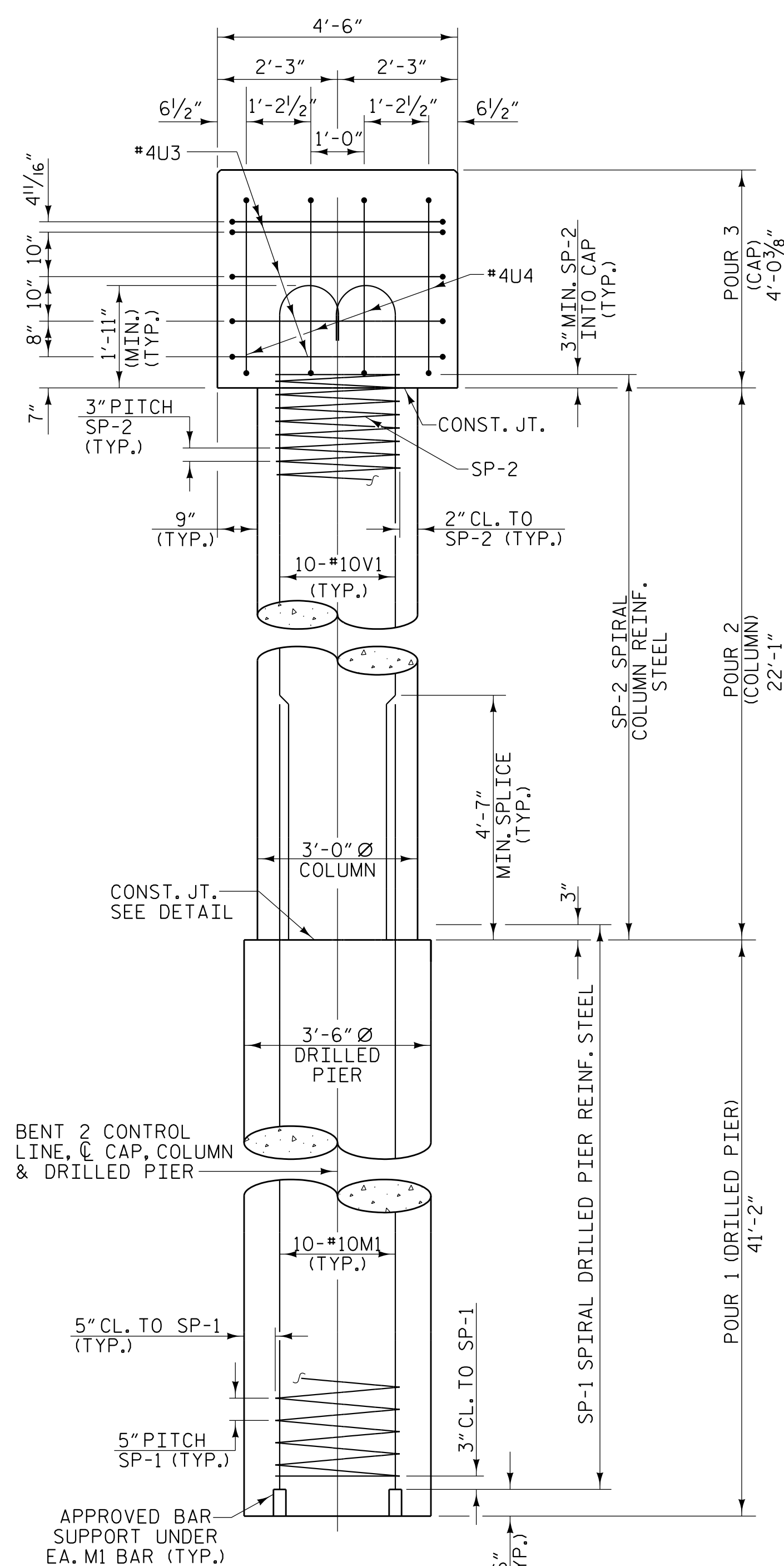
ALL BAR DIMENSIONS ARE OUT TO OUT

\*\* THE SP-1 SPIRAL REINFORCING STEEL SHALL BE W31 OR D-31 COLD DRAWN WIRE OR #5 PLAIN OR DEFORMED BAR.  
 \*\*\* THE SP-2 SPIRAL REINFORCING STEEL SHALL BE W20 OR D-20 COLD DRAWN WIRE OR #4 PLAIN OR DEFORMED BAR.

▲ NO SEPARATE PAYMENT WILL BE MADE FOR CSL TUBES. CSL TUBES WILL BE INCLUDED IN THE UNIT BID PRICE FOR DRILLED PIERS.

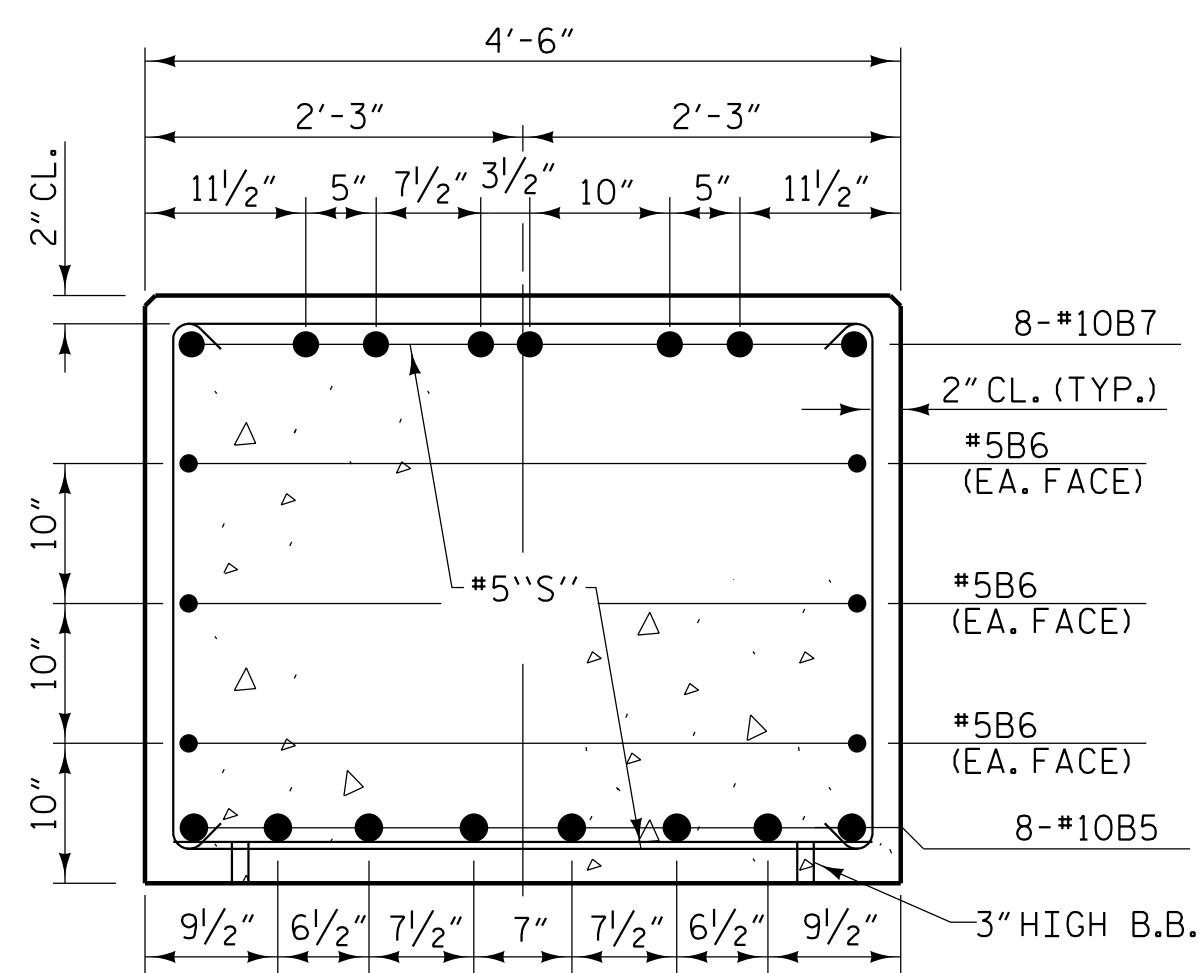
BILL OF MATERIAL

BENT 2 - STAGE I						BENT 2 - STAGE II							
BAR	NO.	SIZE	TYPE	LENGTH	WEIGHT	BAR	NO.	SIZE	TYPE	LENGTH	WEIGHT		
B1	8	#10	STR	41'-7"	1431	B5	8	#10	STR	55'-0"	1893		
B2	6	#5	STR	43'-8"	273	B6	6	#5	STR	56'-0"	350		
B3	8	#10	1	43'-0"	1480	B7	8	#10	1	56'-5"	1942		
B4	8	#4	STR	40'-0"	214	B8	8	#4	STR	9'-2"	49		
M1	30	#10	STR	48'-3"	6229	M1	30	#10	STR	48'-3"	6229		
S1	45	#5	2	11'-4"	532	S1	52	#5	2	11'-4"	615		
U1	47	#4	3	7'-10"	246	U1	44	#4	3	7'-10"	230		
U3	5	#4	3	7'-8"	26	U2	4	#4	3	6'-8"	18		
U4	4	#4	3	6'-1"	16	U3	4	#4	3	7'-8"	20		
V1	30	#10	1	25'-5"	3281	V1	30	#10	1	25'-5"	3281		
TOTAL REINFORCING STEEL						13728 LBS	TOTAL REINFORCING STEEL						14627 LBS
SP-1	3	**	4	818'-3"	2560	SP-1	3	**	4	818'-3"	2560		
SP-2	3	***	5	749'-5"	1502	SP-2	3	***	5	749'-5"	1502		
SPIRAL COLUMN REINFORCING STEEL (SP) 4062 LBS						SPIRAL COLUMN REINFORCING STEEL (SP) 4062 LBS							
CLASS "A" CONCRETE - CU. YARDS						CLASS "A" CONCRETE - CU. YARDS							
POUR 2 - COLUMN						17.3 CU. YDS.	POUR 2 - COLUMN						17.3 CU. YDS.
POUR 3 - CAP						26.6 CU. YDS.	POUR 3 - CAP						34.0 CU. YDS.
TOTAL						43.9 CU. YDS.	TOTAL						51.3 CU. YDS.
DRILLED PIERS						DRILLED PIERS							
DRILLED PIER CONCRETE POUR 1 (DRILLED PIERS)						44.0 C.Y.	DRILLED PIER CONCRETE POUR 1 (DRILLED PIERS)						44.0 C.Y.
3'-6" Ø DRILLED PIER IN SOIL						73.5 LIN. FT.	3'-6" Ø DRILLED PIER IN SOIL						73.5 LIN. FT.
3'-6" Ø DRILLED PIER NOT IN SOIL						50.0 LIN. FT.	3'-6" Ø DRILLED PIER NOT IN SOIL						50.0 LIN. FT.
▲ CSL TUBES						512.0 LIN. FT.	▲ CSL TUBES						512.0 LIN. FT.

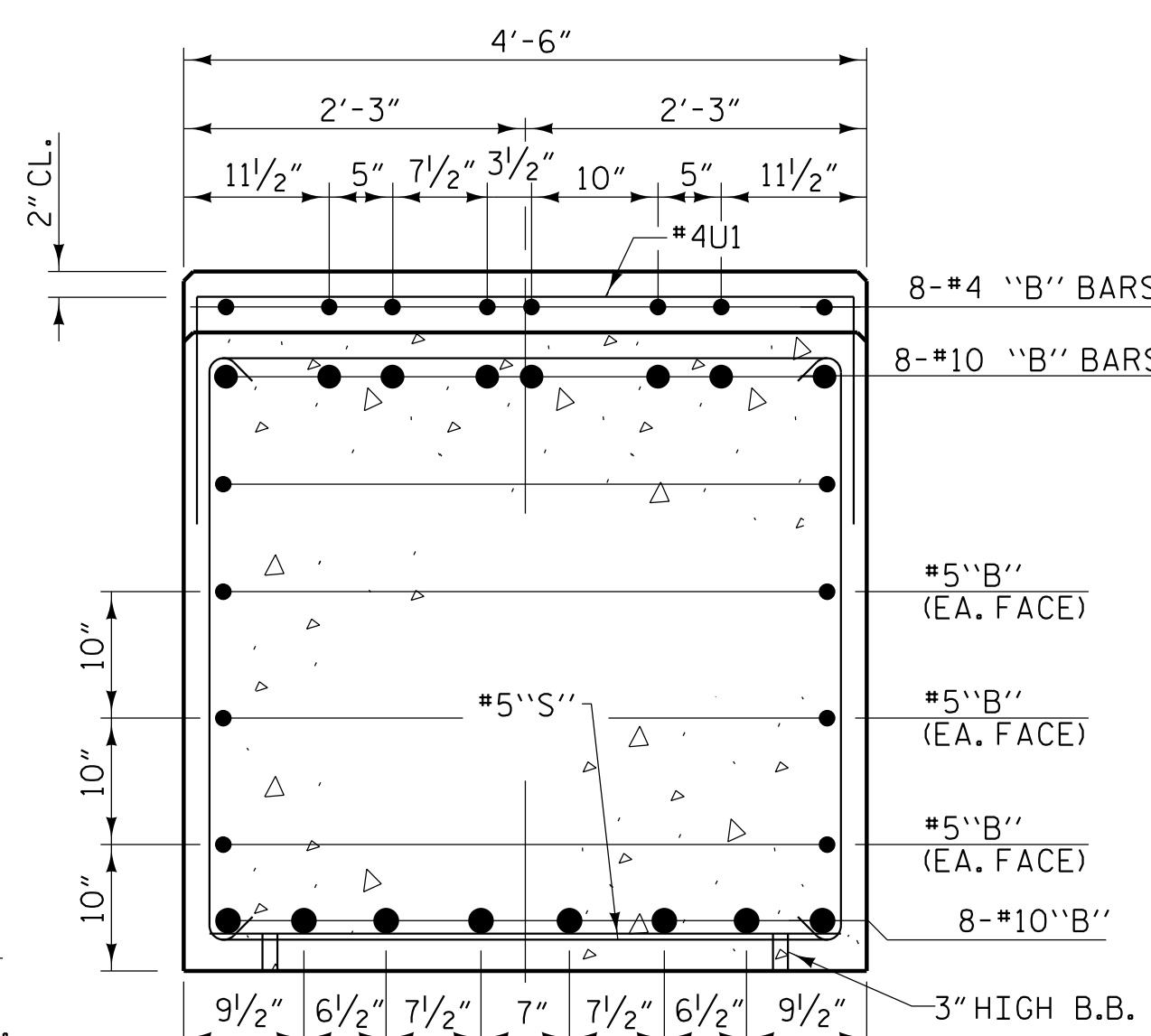


RIGHT END ELEVATION

CONSTRUCTION JOINT DETAIL



SECTION A-A



SECTION B-B

PLANS PREPARED BY:

NV5 ENGINEERS & CONSULTANTS, INC.  
 3300 REGENCY PARKWAY, SUITE 100  
 CARY, NC 27518  
 P: 919.851.1912  
 www.NV5.com  
 NC License # F-1333

DocuSigned by:

PROJECT NO. U-5839  
HAYWOOD COUNTY  
 STATION: 24+64.13 -L- POC

SHEET 4 OF 4

STATE OF NORTH CAROLINA  
 DEPARTMENT OF TRANSPORTATION  
 RALEIGH

SUBSTRUCTURE  
 BENT 2

REVISIONS

NO.	BY:	DATE:	NO.	BY:	DATE:
1			3		
2			4		

SHEET NO.

S1-52  
 TOTAL SHEETS  
 63

DOCUMENT NOT CONSIDERED FINAL  
 UNLESS ALL SIGNATURES COMPLETED

5/18/2023