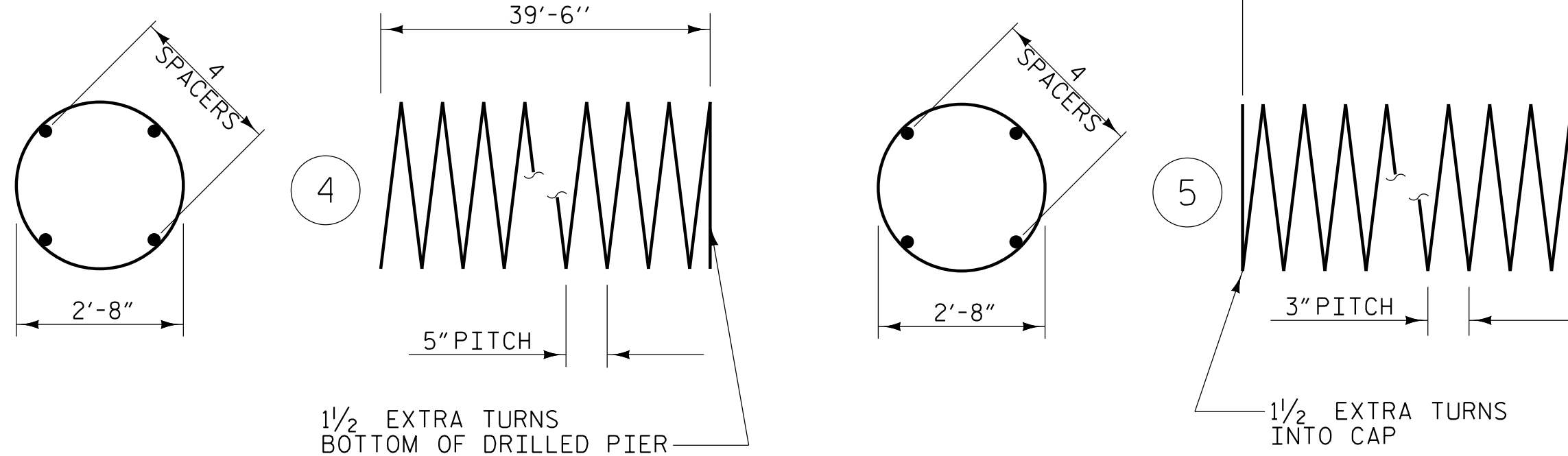
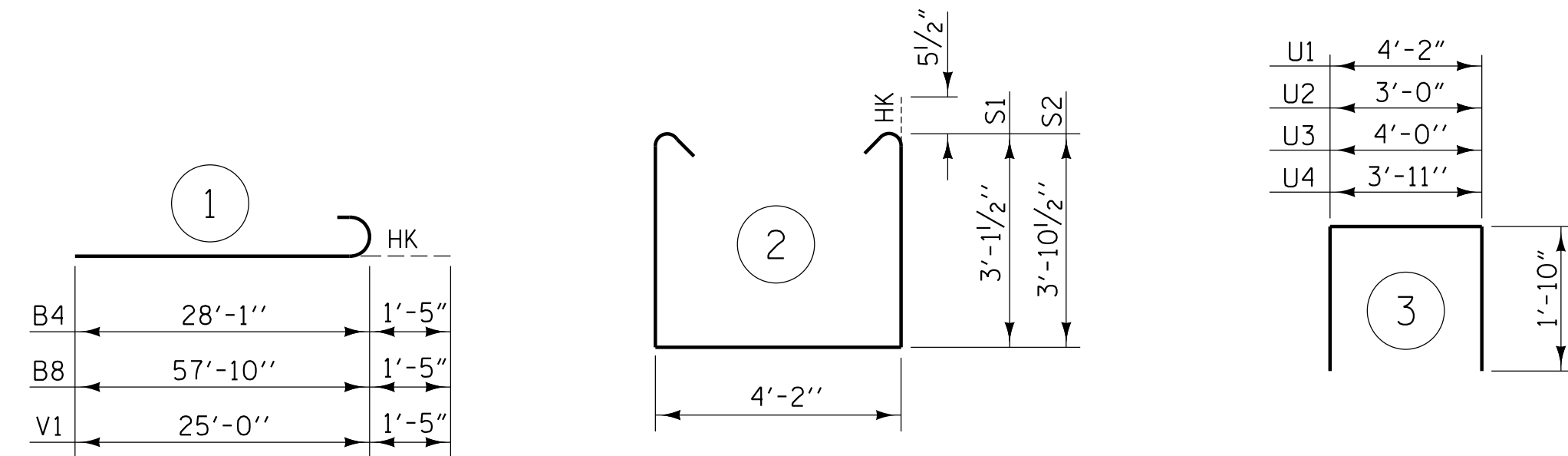


BAR TYPES

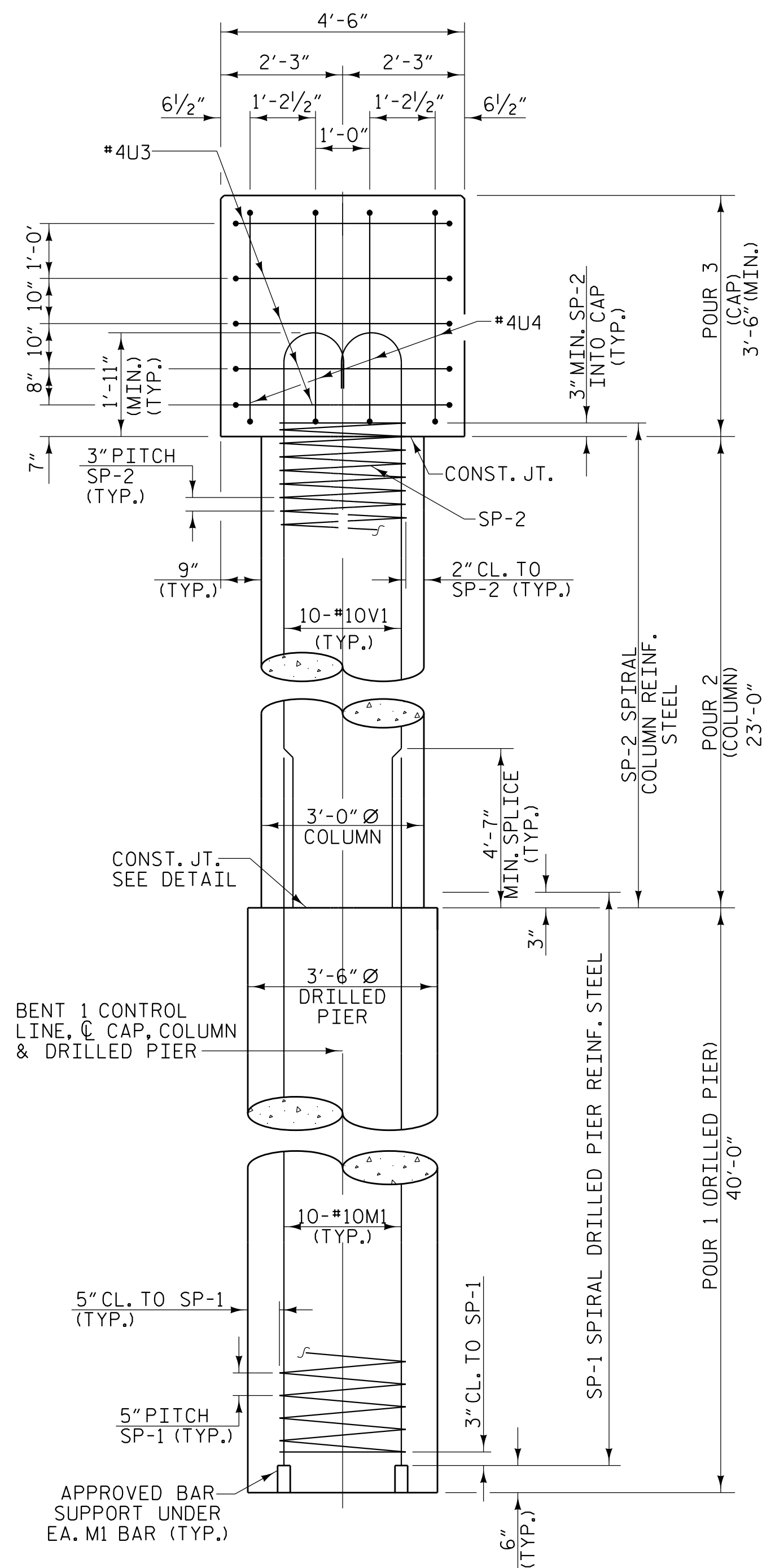


ALL BAR DIMENSIONS ARE OUT TO OUT

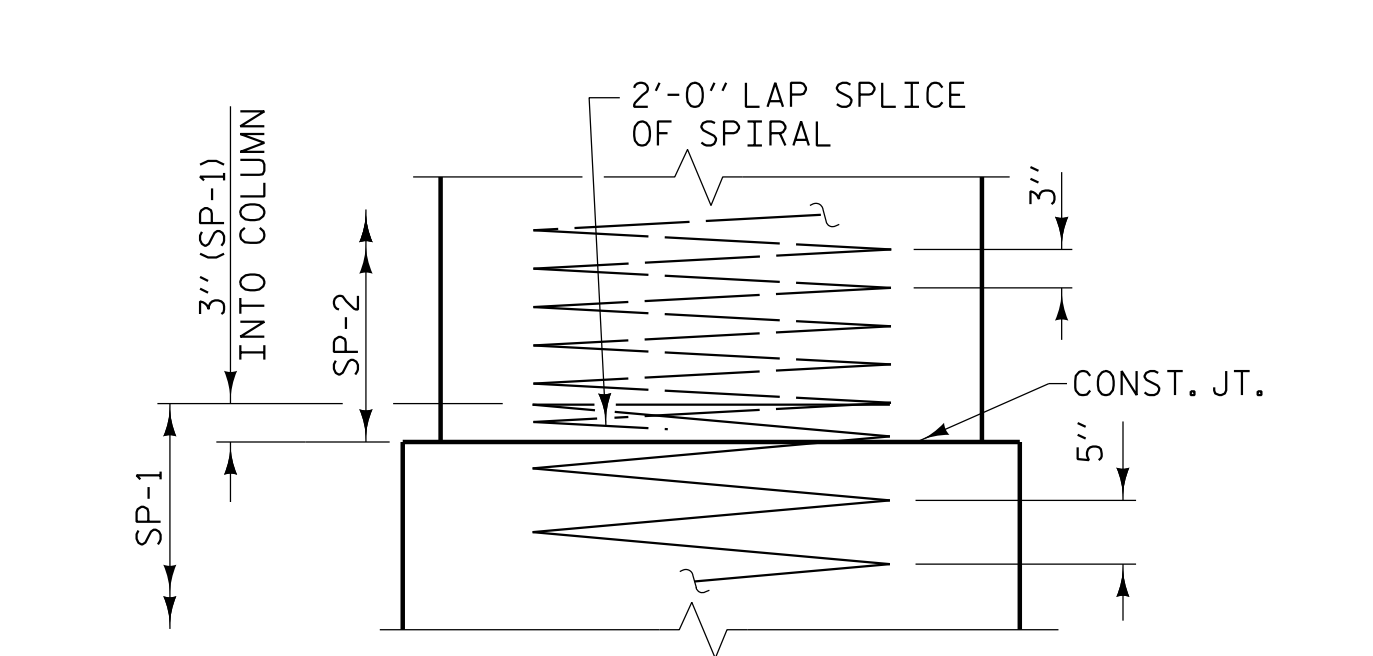
- ** THE SP-1 SPIRAL REINFORCING STEEL SHALL BE W31 OR D-31 COLD DRAWN WIRE OR #5 PLAIN OR DEFORMED BAR.
- *** THE SP-2 SPIRAL REINFORCING STEEL SHALL BE W20 OR D-20 COLD DRAWN WIRE OR #4 PLAIN OR DEFORMED BAR.
- ▲ NO SEPARATE PAYMENT WILL BE MADE FOR CSL TUBES. CSL TUBES WILL BE INCLUDED IN THE UNIT BID PRICE FOR DRILLED PIERS.

BILL OF MATERIAL

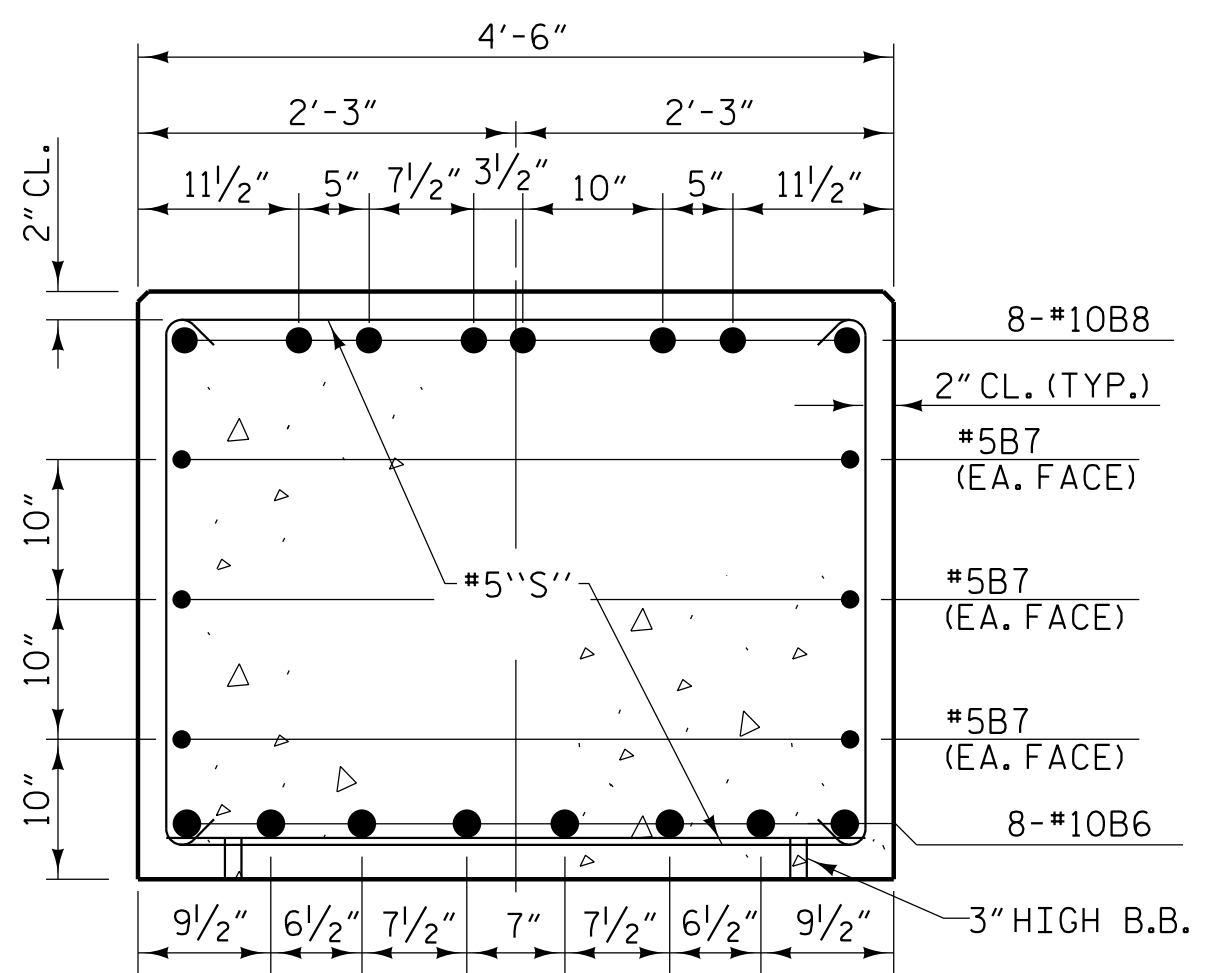
BENT 1 - STAGE I					BENT 1 - STAGE II						
BAR	NO.	SIZE	TYPE	LENGTH	WEIGHT	BAR	NO.	SIZE	TYPE	LENGTH	WEIGHT
B1	8	#10	STR	43'-3"	1489	B5	8	#4	STR	37'-10"	202
B2	6	#5	STR	45'-5"	284	B6	8	#10	STR	57'-10"	1991
B3	8	#10	STR	21'-3"	732	B7	6	#5	STR	58'-10"	368
B4	8	#10	1	29'-6"	1016	B8	8	#10	1	59'-3"	2040
B10	8	#4	STR	15'-6"	83	B9	8	#4	STR	9'-7"	51
B11	2	#5	STR	25'-1"	52						
M1	30	#10	STR	47'-1"	6078	M1	30	#10	STR	47'-1"	6078
S1	23	#5	2	11'-4"	272	S1	87	#5	2	11'-4"	1028
S2	30	#5	2	12'-10"	402	U1	60	#4	3	7'-10"	314
U1	38	#4	3	7'-10"	199	U2	4	#4	3	6'-8"	18
U3	5	#4	3	7'-8"	26	U3	4	#4	3	7'-8"	20
U4	4	#4	3	7'-7"	20	V1	30	#10	1	26'-5"	3410
V1	30	#10	1	26'-5"	3410						
TOTAL REINFORCING STEEL					14063 lbs.	TOTAL REINFORCING STEEL					15520 lbs.
SP-1	3	**	4	795'-2"	2488	SP-1	3	**	4	795'-2"	2488
SP-2	3	***	5	779'-8"	1562	SP-2	3	***	5	779'-8"	1562
SPIRAL COLUMN REINFORCING STEEL (SP) 4050LBS						SPIRAL COLUMN REINFORCING STEEL (SP) 4050LBS					
CLASS "A" CONCRETE - CU. YARDS						CLASS "A" CONCRETE - CU. YARDS					
POUR 2 - COLUMN					18.1 CU. YDS.	POUR 2 - COLUMN					18.1 CU. YDS.
POUR 3 - CAP					30.2 CU. YDS.	POUR 3 - CAP					36.9 CU. YDS.
TOTAL					48.3 CU. YDS.	TOTAL					55.0 CU. YDS.
DRILLED PIERS						DRILLED PIERS					
DRILLED PIER CONCRETE POUR 1 (DRILLED PIERS)					42.8 C.Y.	DRILLED PIER CONCRETE POUR 1 (DRILLED PIERS)					42.8 C.Y.
3'-6" Ø DRILLED PIER IN SOIL					77.0 LIN. FT.	3'-6" Ø DRILLED PIER IN SOIL					77.0 LIN. FT.
3'-6" Ø DRILLED PIER NOT IN SOIL					43.0 LIN. FT.	3'-6" Ø DRILLED PIER NOT IN SOIL					43.0 LIN. FT.
▲ CSL TUBES					498.0 LIN FT.	▲ CSL TUBES					498.0 LIN FT.



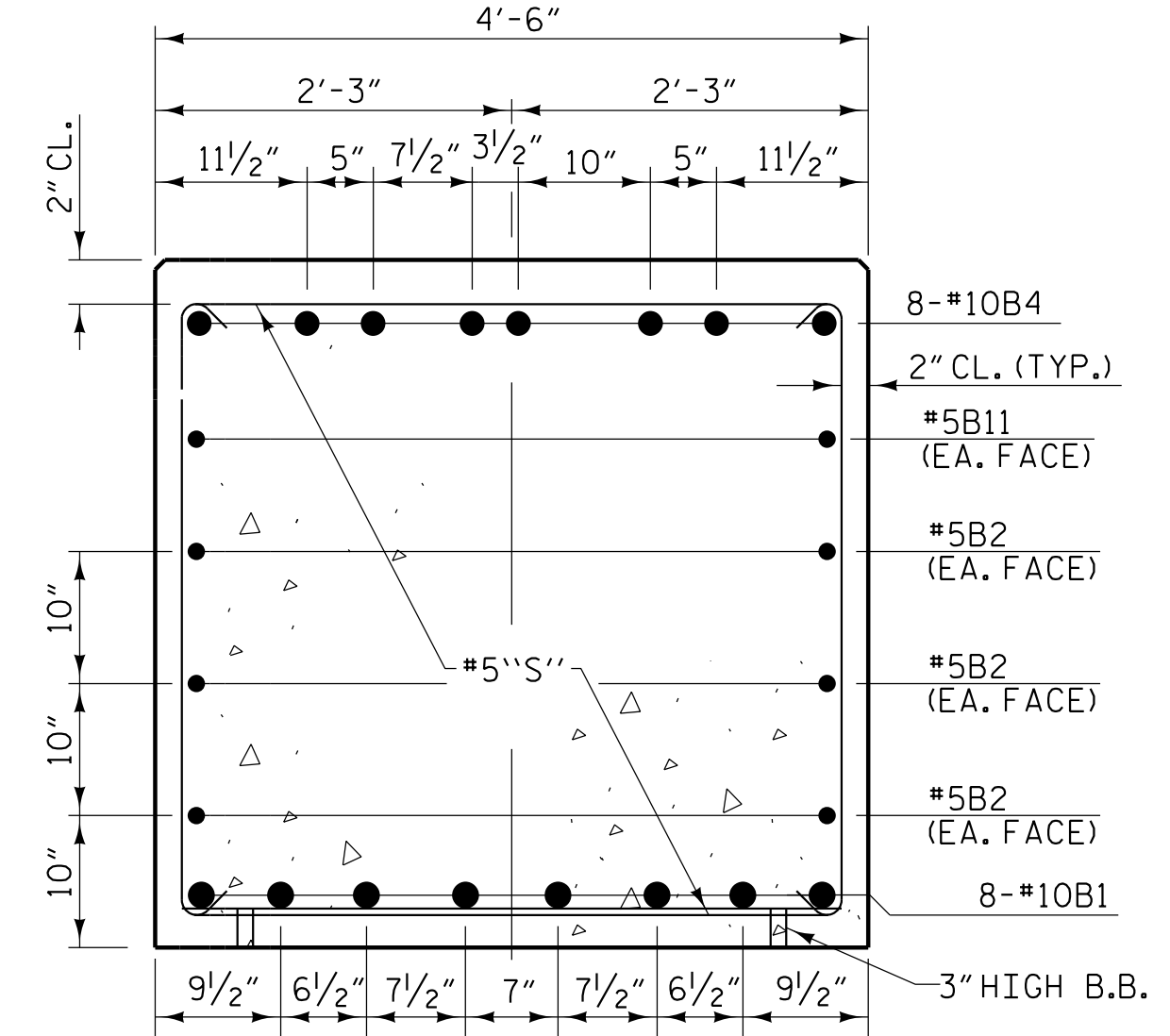
RIGHT END ELEVATION



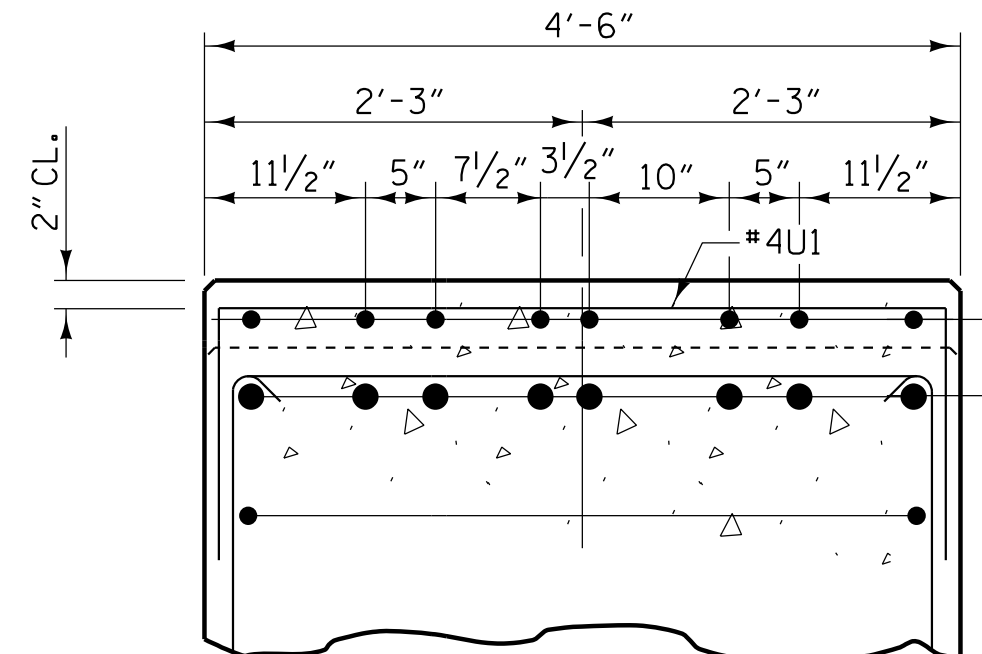
CONSTRUCTION JOINT DETAIL



SECTION A-A



SECTION C-C



SECTION B-B

PROJECT NO. U-5839
 HAYWOOD COUNTY
 STATION: 24+64.13 -L- POC

SHEET 4 OF 4
 DEPARTMENT OF TRANSPORTATION
 RALEIGH
 SUBSTRUCTURE
 BENT 1

PLANS PREPARED BY:
NIV5
 NV5 ENGINEERS & CONSULTANTS, INC.
 3300 REGENCY PARKWAY, SUITE 100
 CARY, NC 27518
 P: 919.851.1912
 www.NV5.com
 NC License # F-1333

DocuSigned by:
 [Signature]
 BEB2398D9220470
 PROFESSIONAL ENGINEER
 ROBERT C. LARSON
 SEAL 1414
 5/18/2023

**DOCUMENT NOT CONSIDERED FINAL
 UNLESS ALL SIGNATURES COMPLETED**

REVISIONS				SHEET NO.	
NO.	BY:	DATE:	NO.	BY:	DATE:
1			3		
2			4		

TOTAL SHEETS: 63

5/17/2023 7:41:22 PM R:\Structures\3_spon Bridge cover RRV48 US839_SMU_B4_430864.dgn

DRAWN BY: W. B. ALLEN DATE: 5/20
 CHECKED BY: Z. H. BROWN DATE: 8/20
 DESIGN ENGINEER OF RECORD: R. C. LARSON DATE: 4/23

DocuSigned by:
 [Signature]
 BEB2398D9220470