

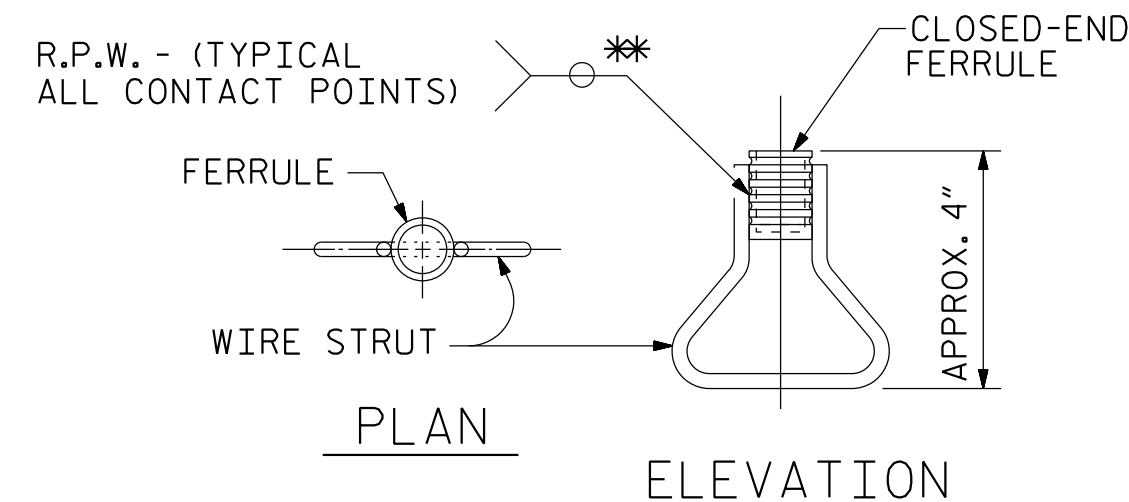
**END VIEW**

(NORMAL TO SIDEWALK)

\* CONCRETE RECESS DIMENSIONS:

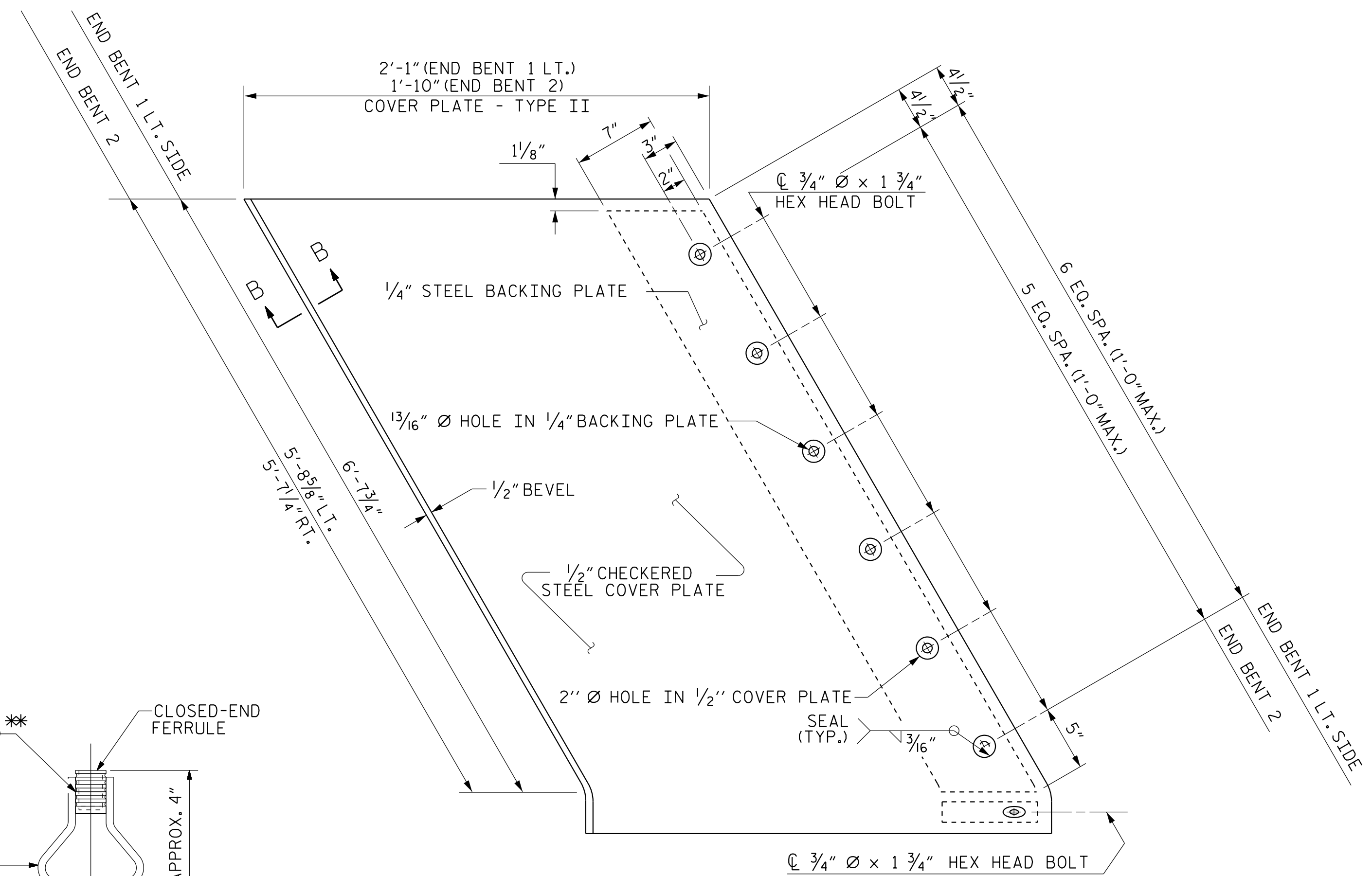
13/16" FOR THE SIDE OF THE JOINT HAVING THE 1/2" COVER PLATE WITH A 1/4" BACKING PLATE.

9/16" FOR THE SIDE OF THE JOINT HAVING ONLY THE 1/2" COVER PLATE.



**CONCRETE INSERT**

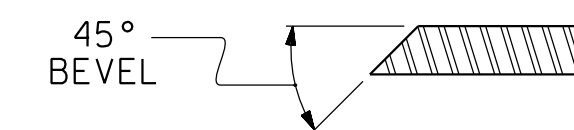
\*\* EACH WELDED ATTACHMENT OF WIRE TO FERRULE SHALL DEVELOP THE TENSILE STRENGTH OF THE WIRE.



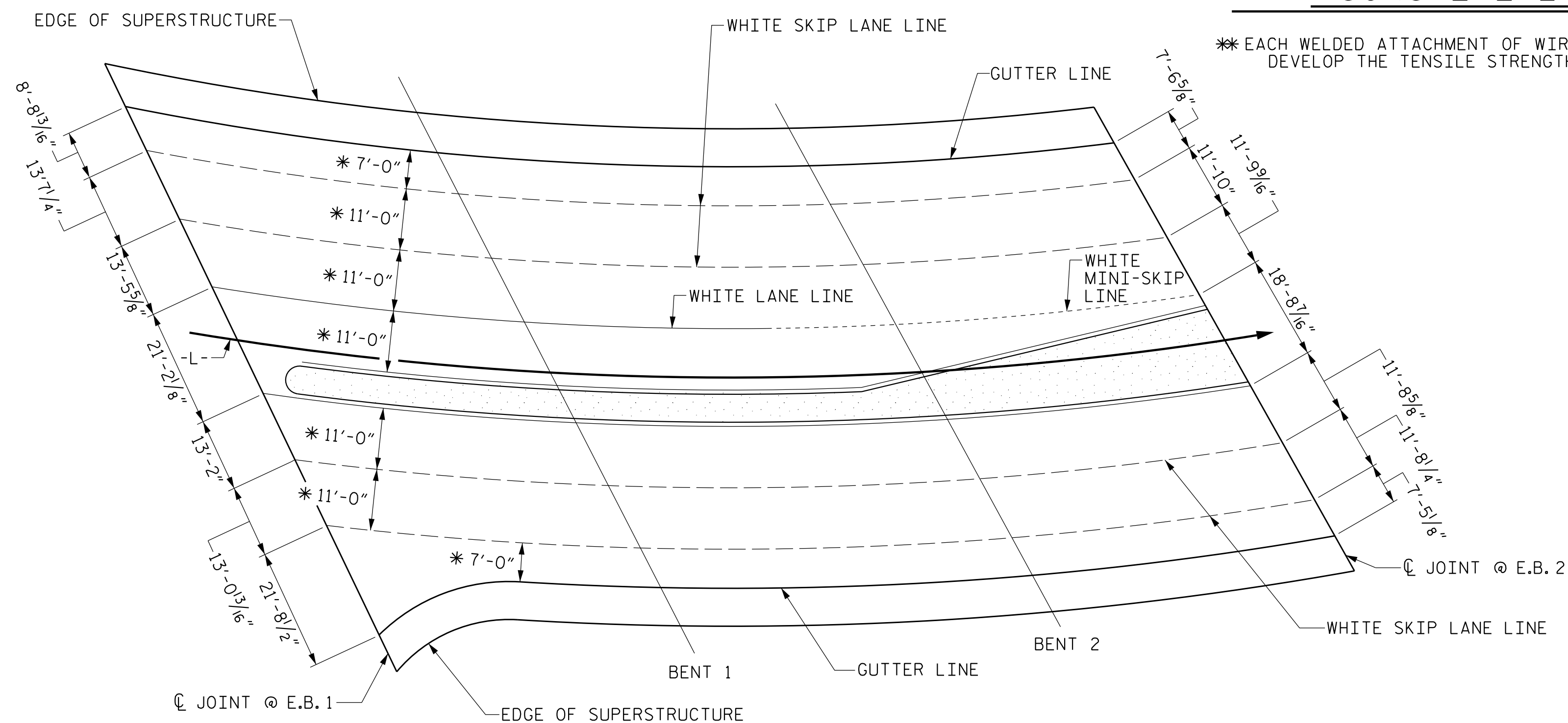
**TYPE II - PLAN VIEW**

(3 REQ'D)

**COVER PLATE DETAILS**



**SECTION B - B**



**PAVEMENT MARKING ALIGNMENT**

\* DENOTES RADIAL DIMENSION

PROJECT NO. U-5839  
HAYWOOD COUNTY  
 STATION: 24+64.13 -L- POC

SHEET 3 OF 3

STATE OF NORTH CAROLINA  
 DEPARTMENT OF TRANSPORTATION  
 RALEIGH  
 STANDARD  
**STRIP SEAL EXPANSION  
 JOINT DETAILS  
 FOR SIDEWALK**

REVISIONS						SHEET NO.
NO.	BY:	DATE:	NO.	BY:	DATE:	S1-36
1			3			TOTAL SHEETS
2			4			63

PLANS PREPARED BY:

**NV5**

NV5 ENGINEERS & CONSULTANTS, INC.  
 3300 REGENCY PARKWAY, SUITE 100  
 CARY, NC 27518  
 P: 919.851.1912 www.NV5.com  
 NC License # F-1333

THIS STANDARD DRAWING REVIEWED & ADOPTED FOR USE AT THE REFERENCED LOCATION BY THE UNDERSIGNED:

DocuSigned by:

*[Signature]*

BEB2398D9220470

SEAL 1414  
 ENGINEER  
 ROBERT C. LARSON

5/18/2023

**DOCUMENT NOT CONSIDERED FINAL  
 UNLESS ALL SIGNATURES COMPLETED**

5/17/2023 7:40:06 PM R:\S\Structures\3 span Bridge cover RRY\36\_U5839\_SMU\_S53\_430184.dgn

DRAWN BY: J. M. DAVIS DATE: 1/23  
 CHECKED BY: R. C. LARSON DATE: 1/23  
 DESIGN ENGINEER OF RECORD: R. C. LARSON DATE: 4/23

DocuSigned by:  
*[Signature]*  
 BEB2398D9220470