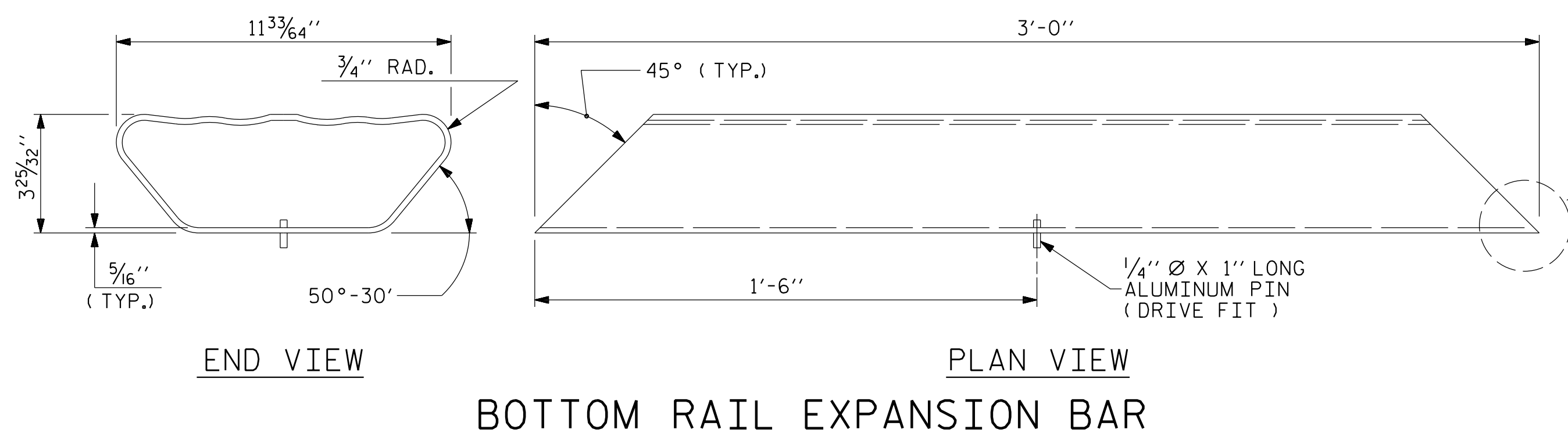
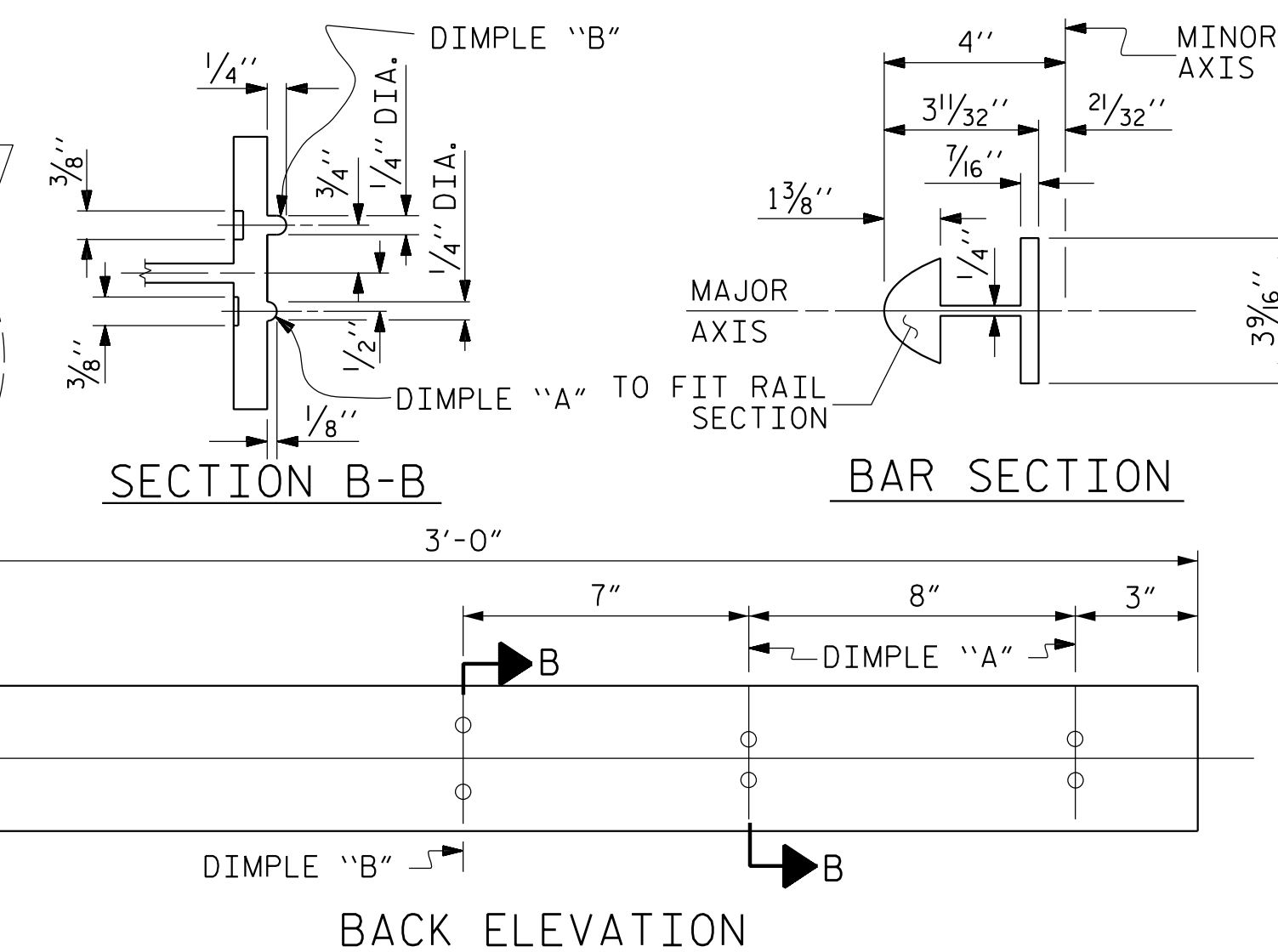
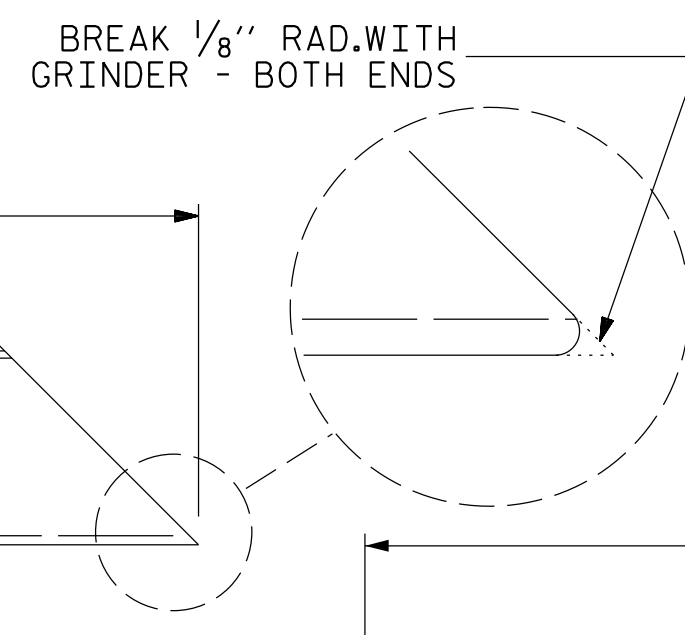


5-BOLT METAL RAIL ANCHOR ASSEMBLY

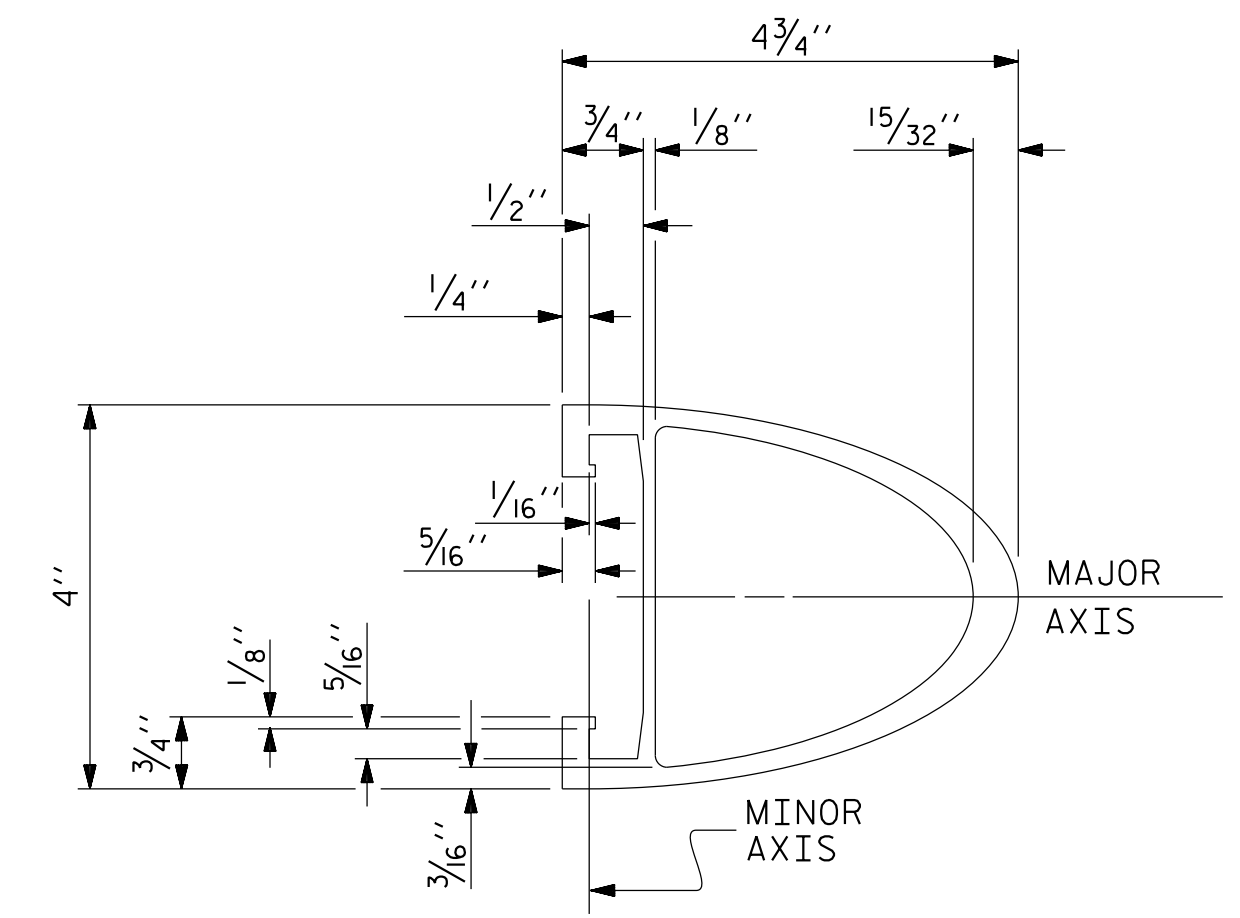
(59 ASSEMBLIES REQUIRED)



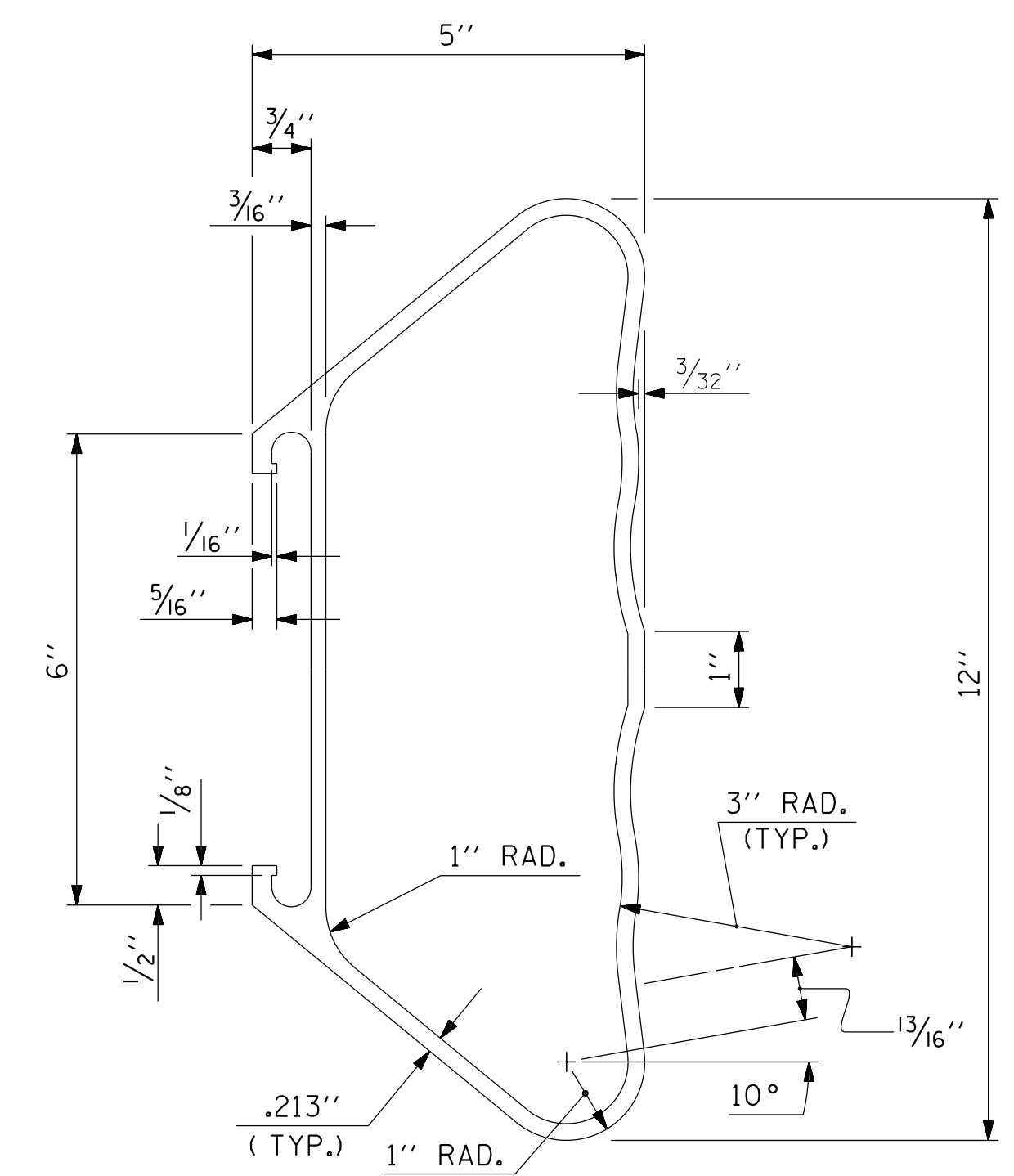
BOTTOM RAIL EXPANSION BAR



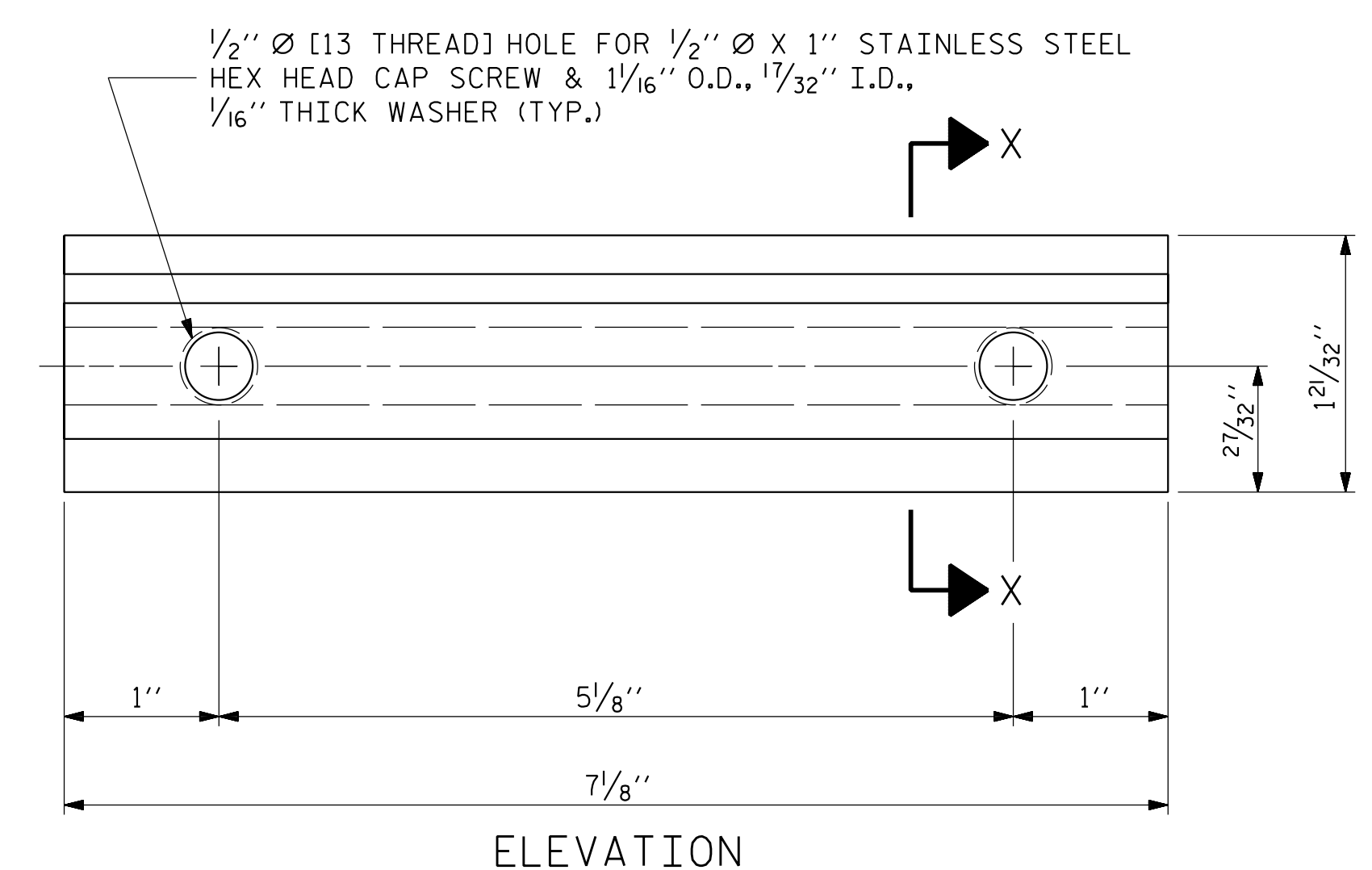
TOP & MIDDLE RAIL EXPANSION BAR



TOP & MIDDLE RAIL SECTION

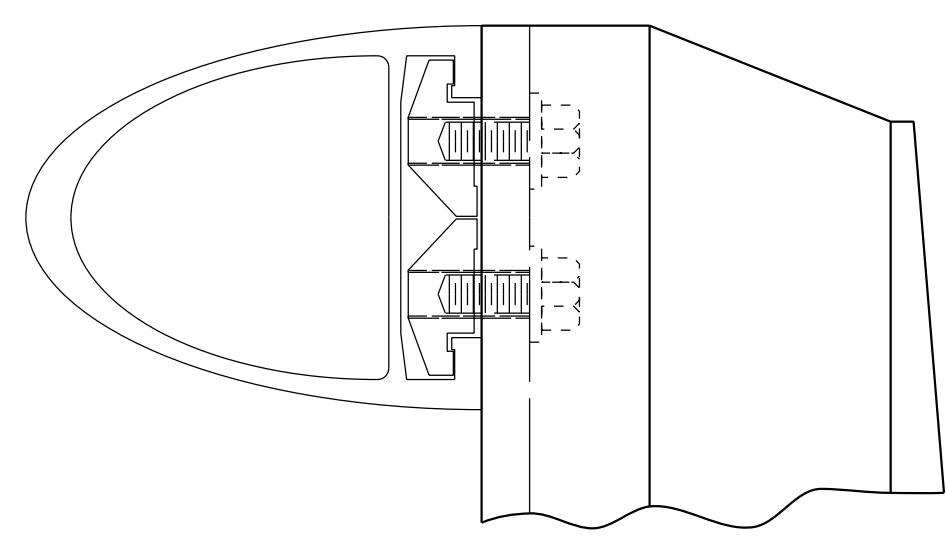
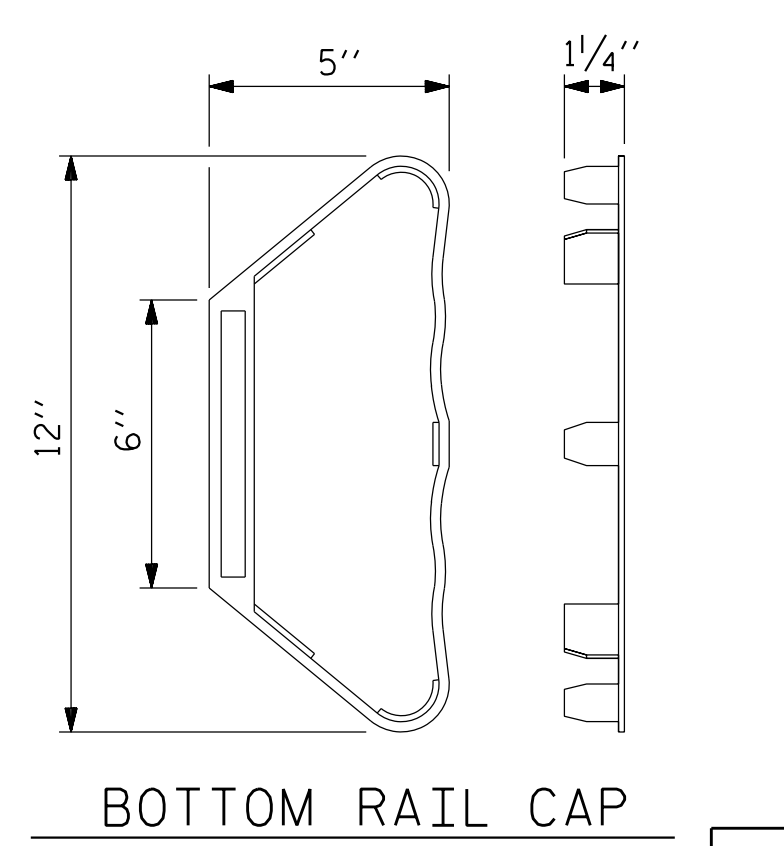
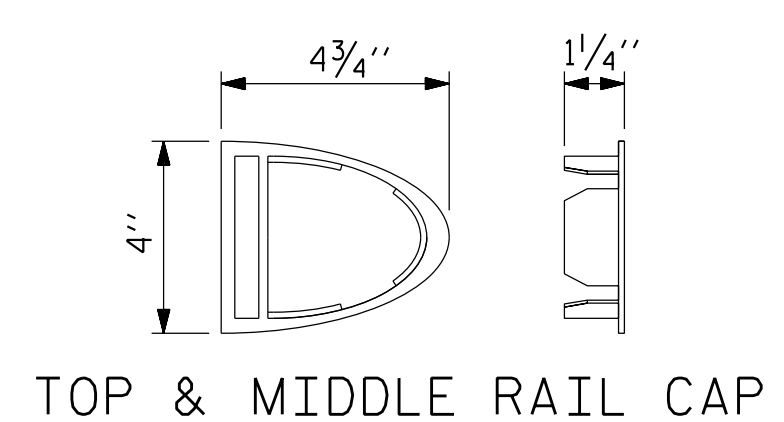
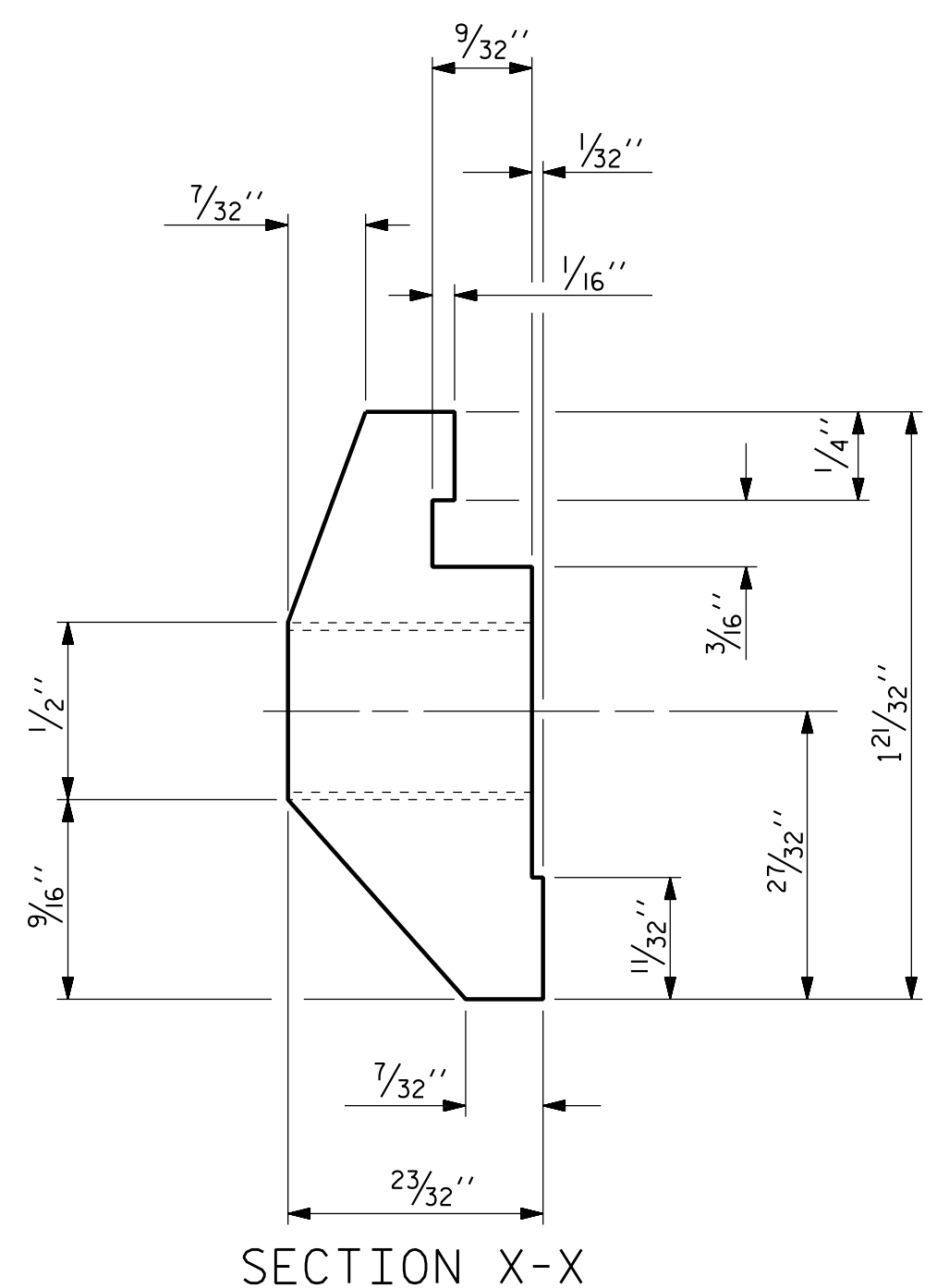


BOTTOM RAIL SECTION



CLAMP BAR DETAIL

(6 REQUIRED PER POST)



CLAMP ASSEMBLY

PLANS PREPARED BY:

NV5

NV5 ENGINEERS & CONSULTANTS, INC.
3300 REGENCY PARKWAY, SUITE 100
CARY, NC 27518
P: 919.851.1912 www.nv5.com
NC License # F-1333

THIS STANDARD DRAWING REVIEWED & ADOPTED FOR USE AT THE REFERENCED LOCATION BY THE UNDERSIGNED:

DocuSigned by:
ROBERT C. LARSON
SEAL 1414
ENGINEER
BEB2398D9220470

5/18/2023

PROJECT NO. U-5839
HAYWOOD COUNTY
STATION: 24+64.13 -L- POC

SHEET 2 OF 3

STATE OF NORTH CAROLINA DEPARTMENT OF TRANSPORTATION RALEIGH					
STANDARD 3 BAR METAL RAIL					
SHEET NO. S1-30					
TOTAL SHEETS 63					
REVISIONS					
NO.	BY:	DATE:	NO.	BY:	DATE:
1			3		
2			4		

DRAWN BY: W. B. ALLEN DATE: 10/19
CHECKED BY: Z. H. BROWN DATE: 1/20
DESIGN ENGINEER OF RECORD: R. C. LARSON DATE: 4/23

DocuSigned by:
BEB2398D9220470

**DOCUMENT NOT CONSIDERED FINAL
UNLESS ALL SIGNATURES COMPLETED**

5/17/2023 7:40:23 PM R:\Structures\3 span Bridge over RRV30 US5839_SMU_WR2_43084.dgn