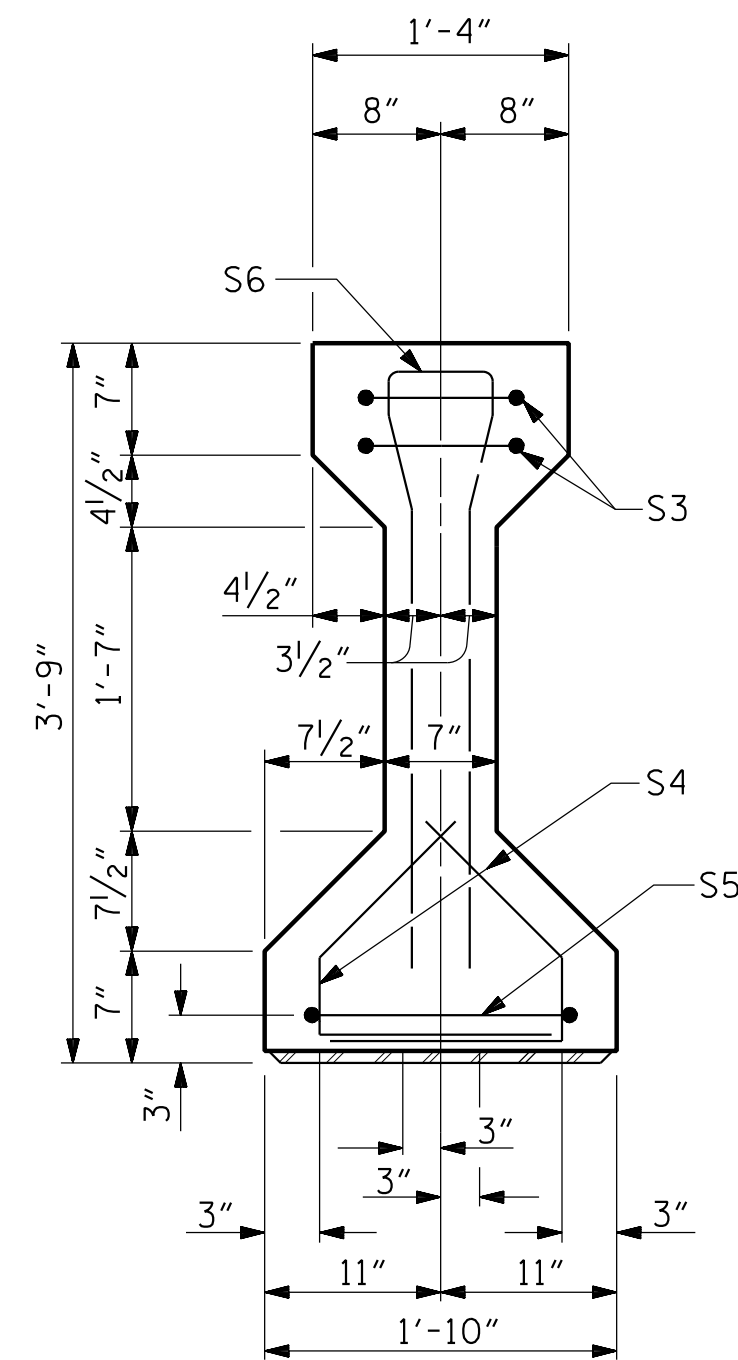
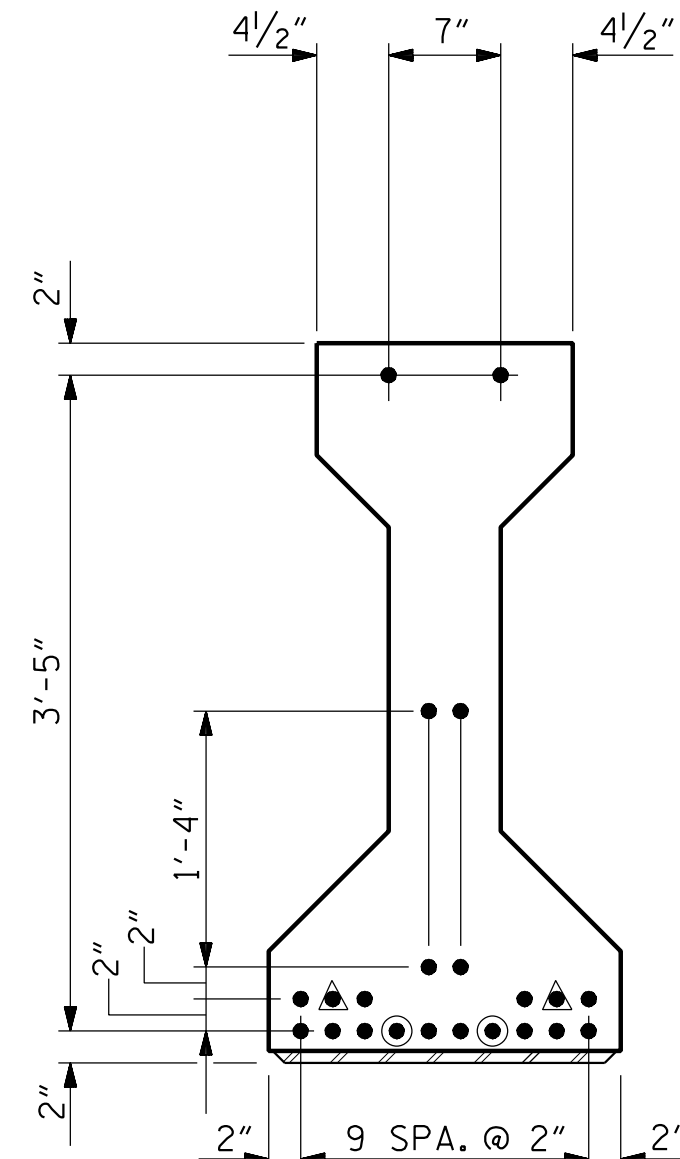


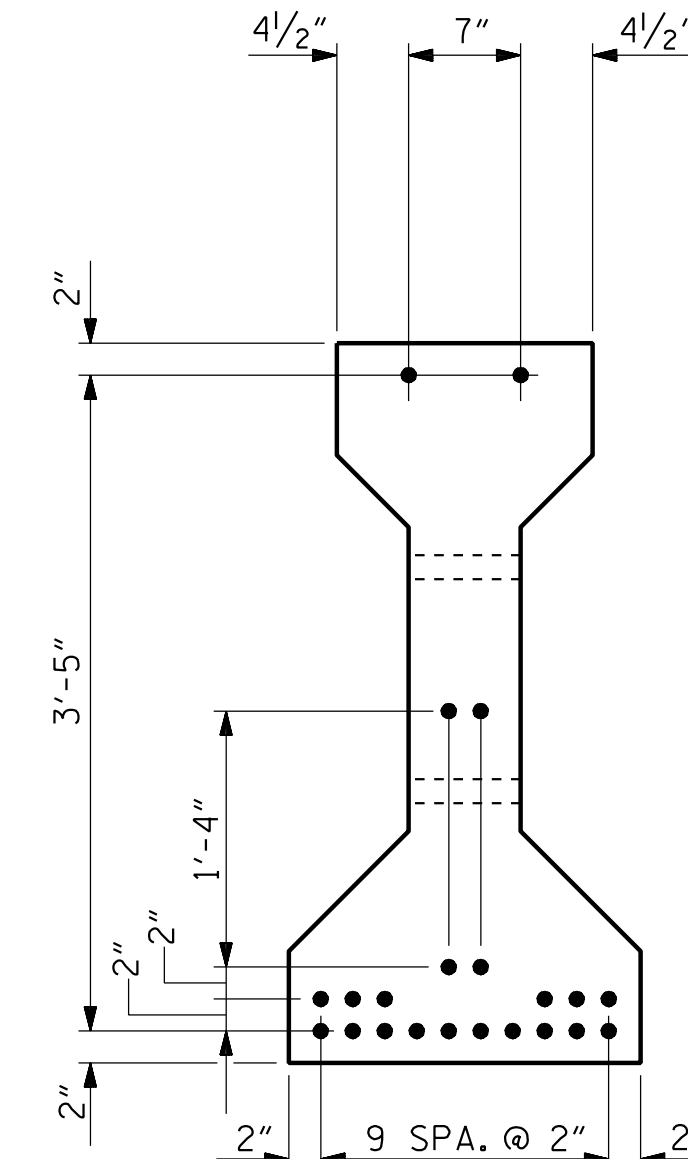
SECTION A-A



SECTION B-B



AT END OF GIRDER

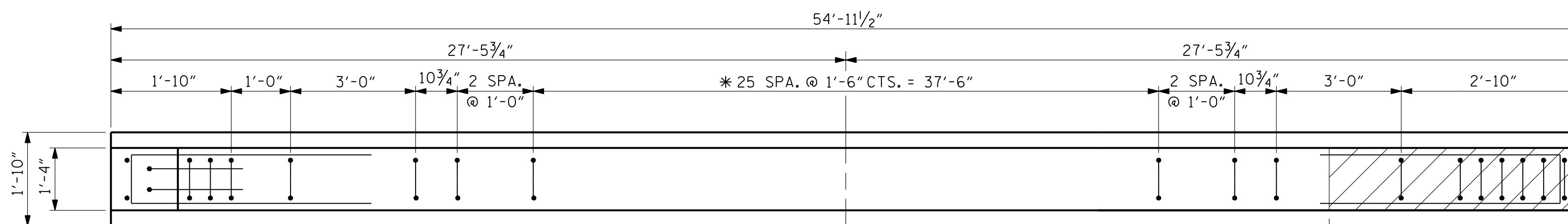


AT CL OF GIRDER

0.6" Ø LOW RELAXATION STRAND LAYOUT

- FULLY BONDED STRAND
- ▲ BOND SHALL BE BROKEN ON THESE STRANDS FOR A DISTANCE OF 4'-0" FROM END OF GIRDER.
- ◎ BOND SHALL BE BROKEN ON THESE STRANDS FOR A DISTANCE OF 6'-0" FROM END OF GIRDER.

DEBONDING LEGEND



PLAN OF GIRDER

3'-6" LINK SLAB REGION DO NOT RAKE THE TOP OF THE GIRDER IN THIS AREA

QUANTITIES FOR ONE GIRDER			
	REINFORCING STEEL	6500 PSI CONCRETE	0.6" Ø L. R. STRANDS
	LB.	C.Y.	No.
AG1, AG5, AG6, AG9	634	7.9	22
AG2-AG4, AG7-AG8	673	7.9	22

GIRDERS REQUIRED		
NUMBER	LENGTH	TOTAL LENGTH
9	54'-11 1/2"	494'-7 1/2"

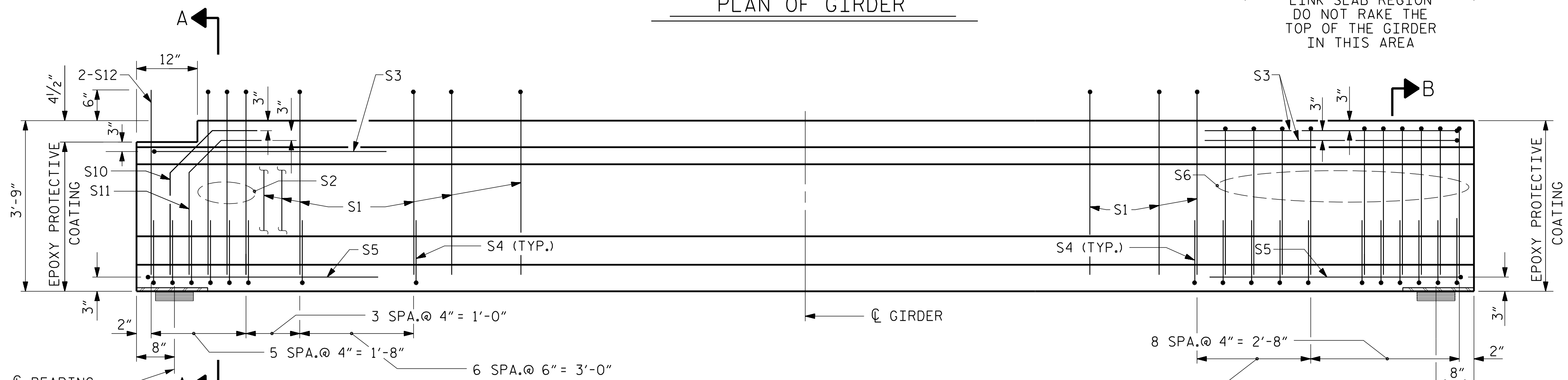
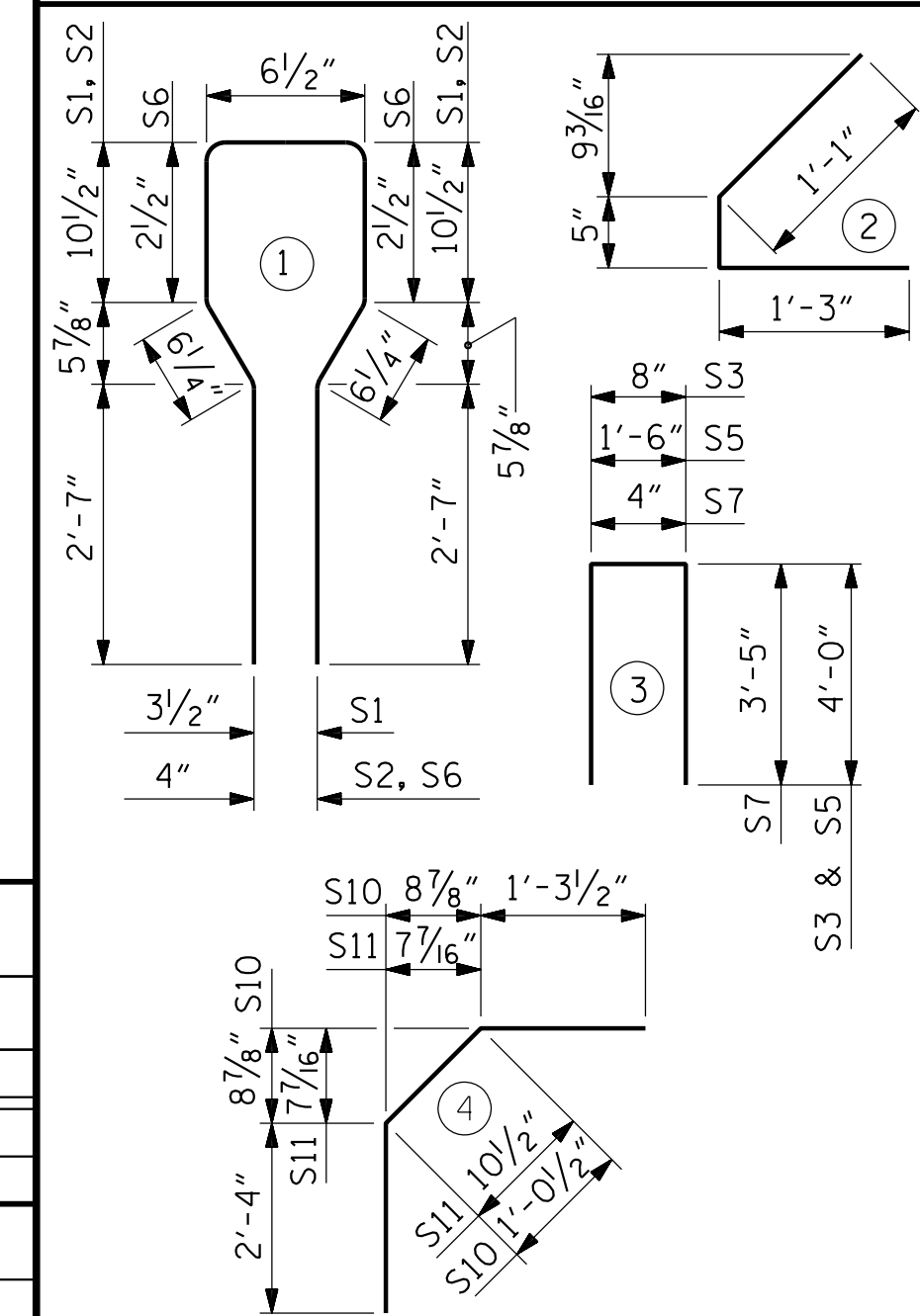
0.6" Ø L. R. GRADE 270 STRANDS		
AREA (SQUARE INCHES)	ULTIMATE STRENGTH (LBS. PER STRAND)	APPLIED PRESTRESS (LBS. PER STRAND)
0.217	58,600	43,950

REINFORCING STEEL FOR ONE GIRDER

BAR	NUMBER	SIZE	TYPE	LENGTH	WEIGHT
S1	40	#4	1	8'-6"	227
S2	3	#6	1	8'-6"	38
S3	3	#4	3	8'-8"	17
S4	60	#4	2	2'-9"	110
S5	2	#4	3	9'-6"	13
S6	14	#6	1	7'-2"	151
S7	2	#5	3	7'-2"	15
S8	5	#4	STR	7'-0"	23
S9	5	#4	STR	14'-0"	47
S10	2	#6	4	4'-8"	14
S11	2	#6	4	4'-6"	14
S12	2	#6	STR	4'-0"	12

BAR TYPES

ALL BAR DIMENSIONS ARE OUT-TO-OUT



ELEVATION OF GIRDER

(SEE PARTIAL ELEVATIONS ON SHEET 4 OF 6 FOR ADDITIONAL "S" BARS AND LOCATION OF FORMED HOLES)

* S1 BARS MAY BE SHIFTED SLIGHTLY AS NECESSARY TO MISS 1/2" Ø FORMED HOLES.

PLANS PREPARED BY:

NV5 ENGINEERS & CONSULTANTS, INC.
3300 REGENCY PARKWAY, SUITE 100
CARY, NC 27518
P: 919.851.1912 www.nv5.com
NC License # F-1333

DocuSigned by:

ROBERT C. LARSON
ENGINEER
14114

PROJECT NO. U-5839
HAYWOOD COUNTY
STATION: 24+64.13 -L- POC

SHEET 1 OF 6

STATE OF NORTH CAROLINA
DEPARTMENT OF TRANSPORTATION
RALEIGH

SUPERSTRUCTURE
AASHTO TYPE III
PRESTRESSED CONCRETE GIRDER
FOR LINK SLAB
(SPAN A)

REVISIONS						SHEET NO.
NO.	BY:	DATE:	NO.	BY:	DATE:	S1-22
1			3			TOTAL SHEETS
2			4			63

5/17/2023 7:05:59 PM RA:\Structures\3 span Bridge over RR\22 US839_SMU_GI_430184.dgn

DRAWN BY: W. B. ALLEN DATE: 9/19
CHECKED BY: Z. H. BROWN DATE: 1/20
DESIGN ENGINEER OF RECORD: R. C. LARSON DATE: 4/23

DocuSigned by:
R. C. LARSON
BEB238809220470

DOCUMENT NOT CONSIDERED FINAL
UNLESS ALL SIGNATURES COMPLETED

5/18/2023