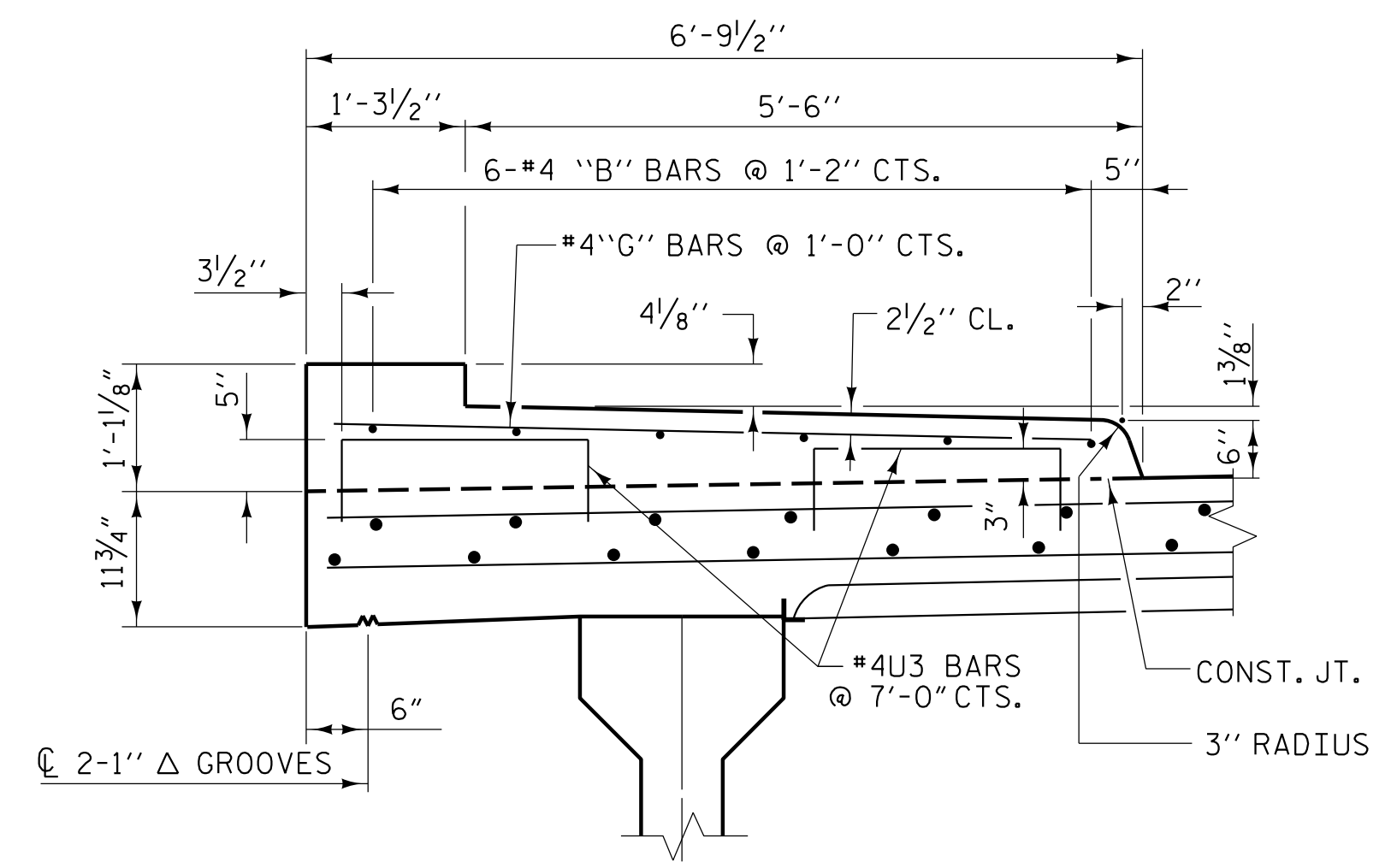
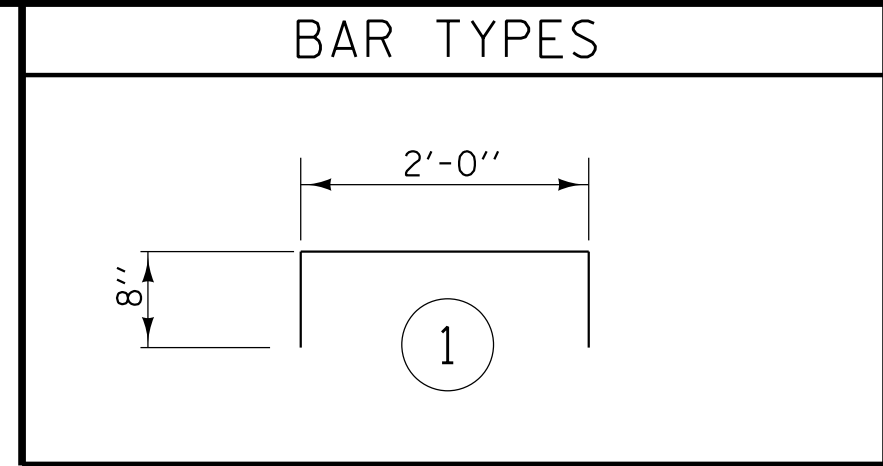


BILL OF MATERIAL											
STAGE I						STAGE II					
BAR	NO.	SIZE	TYPE	LENGTH	WEIGHT	BAR	NO.	SIZE	TYPE	LENGTH	WEIGHT
* B47	30	#4	STR	36'-3"	726	* B48	30	#4	STR	37'-1"	743
* G5	161	#4	STR	6'-4"	681	* G5	171	#4	STR	6'-4"	723
* G6	1	#4	STR	6'-5"	4	* G15	1	#4	STR	6'-2"	4
* G7	1	#4	STR	6'-7"	4	* G16	1	#4	STR	4'-10"	3
* G8	1	#4	STR	6'-8"	4	* G17	1	#4	STR	3'-6"	2
* G9	5	#4	STR	6'-9"	23	* G18	1	#4	STR	2'-2"	1
* G10	1	#4	STR	5'-2"	3	* G19	1	#4	STR	2'-1"	1
* G11	1	#4	STR	4'-6"	3	* G20	1	#4	STR	6'-1"	4
* G12	1	#4	STR	6'-1"	4	* G21	1	#4	STR	3'-3"	2
* G13	1	#4	STR	3'-3"	2	* G22	1	#4	STR	2'-11"	2
* G14	1	#4	STR	2'-11"	2						
* U3	50	#4	1	3'-4"	111	* U3	51	#4	1	3'-4"	114
* EPOXY COATED REINF. STEEL 1567 LBS.						* EPOXY COATED REINF. STEEL 1599 LBS.					
CLASS AA CONCRETE ** 25.3 CU. YDS.						CLASS AA CONCRETE ** 31.8 CU. YDS.					

* INDICATES EPOXY COATED REINF. STEEL
 ** INCLUDES CONC. FOR END POSTS



SECTION THRU SIDEWALK

#4U3 BARS MAY BE PUSHED INTO GREEN CONCRETE AFTER SPAN HAS BEEN SCREEDED OFF.
 LEFT SIDE SHOWN, RIGHT SIDE SIMILAR.

NOTES:

SIDEWALK IN A CONTINUOUS UNIT SHALL NOT BE CAST UNTIL ALL SLAB CONCRETE IN THE UNIT HAS BEEN CAST AND HAS REACHED A MINIMUM COMPRESSIVE STRENGTH OF 3000 PSI.

ALL REINFORCING STEEL IN THE SIDEWALK SHALL BE EPOXY COATED.

NO SEPARATE PAYMENT SHALL BE MADE FOR MATERIALS, LABOR AND INCIDENTALS REQUIRED FOR THIS CONSTRUCTION OF CONCRETE SIDEWALK AND CONCRETE MEDIAN AS DETAILED ON BRIDGE SPANS AND APPROACH SLABS. ALL COSTS FOR THIS WORK SHALL BE INCLUDED IN THE UNIT PRICE BID FOR REINFORCED CONCRETE DECK SLAB.

GROOVED CONTRACTION JOINTS 1/2" IN DEPTH, SHALL BE TOOLED IN ALL EXPOSED FACES OF SIDEWALK IN ACCORDANCE WITH ARTICLE 925-10(B) OF THE STANDARD SPECIFICATIONS, THE CONTRACTION JOINTS SHALL BE LOCATED AT A SPACING OF 8 FEET TO 10 FEET BETWEEN EXPANSION JOINTS. NO CONTRACTION JOINTS WILL BE REQUIRED FOR SEGMENTS LESS THAN 10 FEET IN LENGTH.

PROJECT NO. U-5839
HAYWOOD COUNTY
 STATION: 24+64.13 -L- POC

SHEET 2 OF 2

STATE OF NORTH CAROLINA
 DEPARTMENT OF TRANSPORTATION
 RALEIGH
 SUPERSTRUCTURE
**SIDEWALK
 PLAN AND DETAILS**

PLANS PREPARED BY:
N|V|5
 NV5 ENGINEERS & CONSULTANTS, INC.
 3300 REGENCY PARKWAY, SUITE 100
 CARY, NC 27518
 P: 919.851.1912 www.NV5.com
 NC License # F-1333

DocuSigned by:

 BEB239809220470
 14114
 ROBERT C. LARSON
 5/18/2023

**DOCUMENT NOT CONSIDERED FINAL
 UNLESS ALL SIGNATURES COMPLETED**

REVISIONS						SHEET NO.
NO.	BY:	DATE:	NO.	BY:	DATE:	S1-20
1			3			TOTAL SHEETS
2			4			63

DRAWN BY : W. B. ALLEN DATE : 10/19
 CHECKED BY : Z. H. BROWN DATE : 1/20
 DESIGN ENGINEER OF RECORD: R. C. LARSON DATE : 4/23

DocuSigned by:

 BEB239809220470

5/17/2023 7:05:58 PM RA\Structures\3 span Bridge over RRY20 US5839_SMU_SW2_410184.dgn