

**NOTES**

FOR SIDEWALK DETAILS AND REINFORCING STEEL, SEE "SIDEWALK PLAN AND DETAILS" SHEETS.

FOR TRANSVERSE CONSTRUCTION JOINT DETAIL, SEE "SUPERSTRUCTURE TYPICAL SECTION" SHEET 5 OF 5.

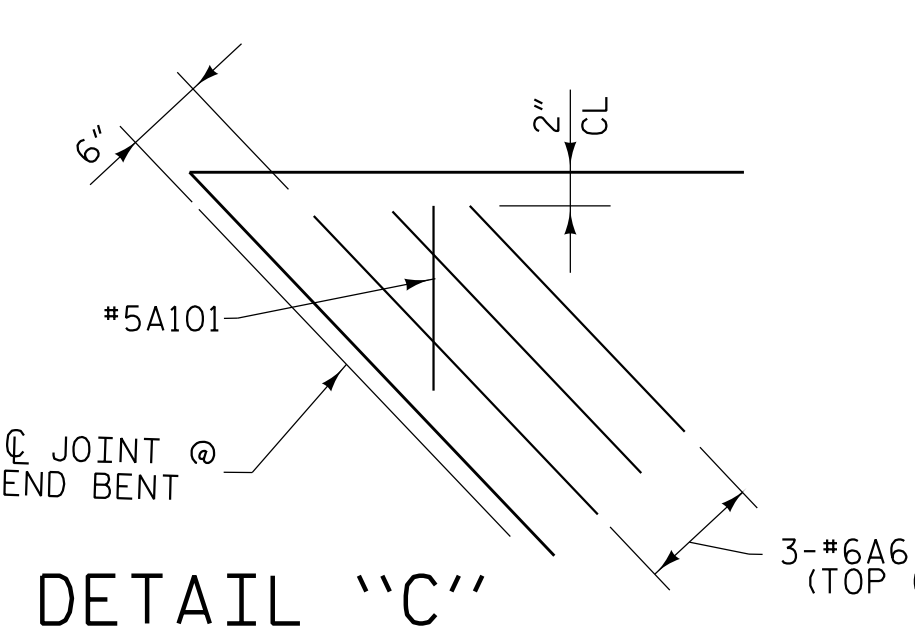
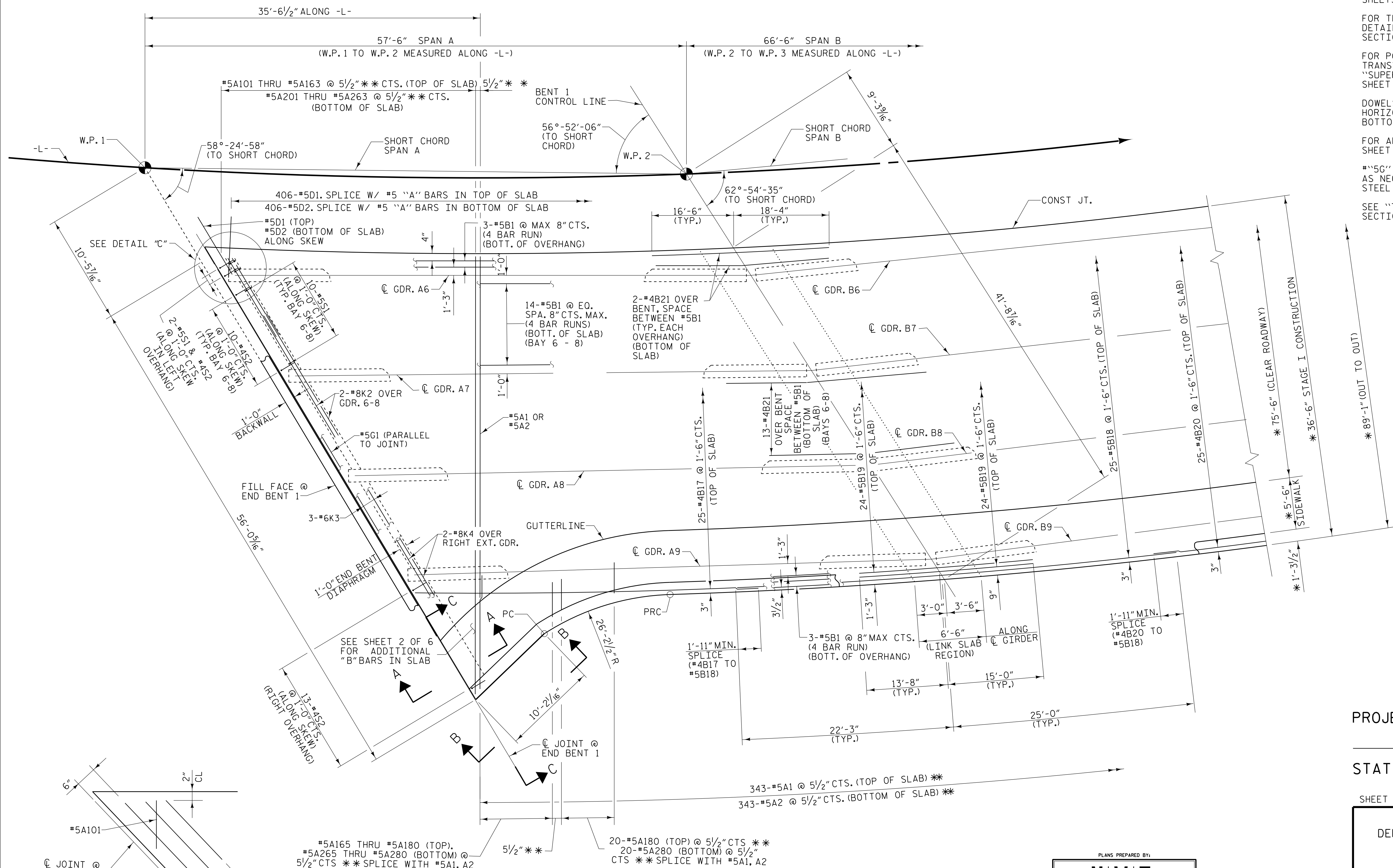
FOR POUR SEQUENCE AND LOCATION OF TRANSVERSE CONSTRUCTION JOINTS, SEE "SUPERSTRUCTURE BILL OF MATERIAL" SHEET 3 OF 3.

DOWELS SHALL BE PLACED IN THE SAME HORIZONTAL PLANE AS THE TOP AND BOTTOM SLAB REINFORCING STEEL.

FOR ARC OFFSETS FOR LEFT EDGE, SEE SHEET 6 OF 6.

\*\*5G" BARS MAY BE SHIFTED SLIGHTLY, AS NECESSARY, TO CLEAR REINFORCING STEEL AND STIRRUPS.

SEE "TYPICAL SECTION" SHEETS FOR SECTIONS A-A, B-B, AND C-C.



**SPANS A & B**

- \* RADIAL DIMENSIONS
- \*\* SPACED AT 5/2" ALONG RIGHT EDGE OF SLAB AND APPROX. 5 3/16" ALONG LEFT EDGE (CONST. JOINT). BARS PLACED RADially

PLANS PREPARED BY:

**N|V|5**

NV5 ENGINEERS & CONSULTANTS, INC.  
 3300 REGENCY PARKWAY, SUITE 100  
 CARY, NC 27518  
 P: 919.851.1912 www.NV5.com  
 NC License # F-1333

DocuSigned by:

ROBERT C. LARSON  
 ENGINEER  
 14114

PROJECT NO. U-5839  
HAYWOOD COUNTY  
 STATION: 24+64.13 -L- POC

SHEET 1 OF 6

STATE OF NORTH CAROLINA  
 DEPARTMENT OF TRANSPORTATION  
 RALEIGH

**SUPERSTRUCTURE  
 PLAN OF SPANS  
 STAGE I**

REVISIONS						SHEET NO.
NO.	BY:	DATE:	NO.	BY:	DATE:	TOTAL SHEETS
1			3			63
2			4			

DRAWN BY: W. B. ALLEN DATE: 12/19  
 CHECKED BY: Z. H. BROWN DATE: 1/20  
 DESIGN ENGINEER OF RECORD: R. C. LARSON DATE: 4/23

**DOCUMENT NOT CONSIDERED FINAL  
 UNLESS ALL SIGNATURES COMPLETED**

5/18/2023

5/17/2023 7:05:54 PM R:\Structures\3 span Bridge over RR\2 U5839.SMU.SI.410184.dgn