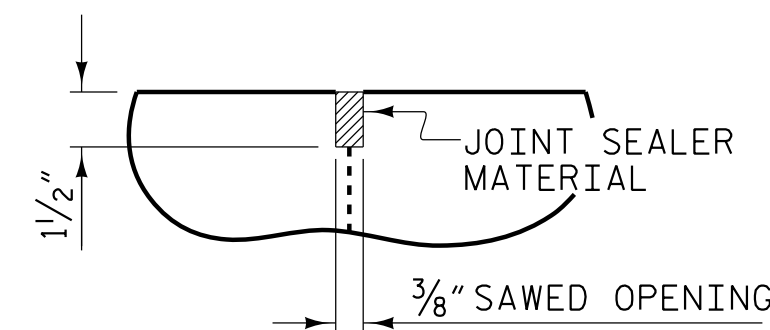


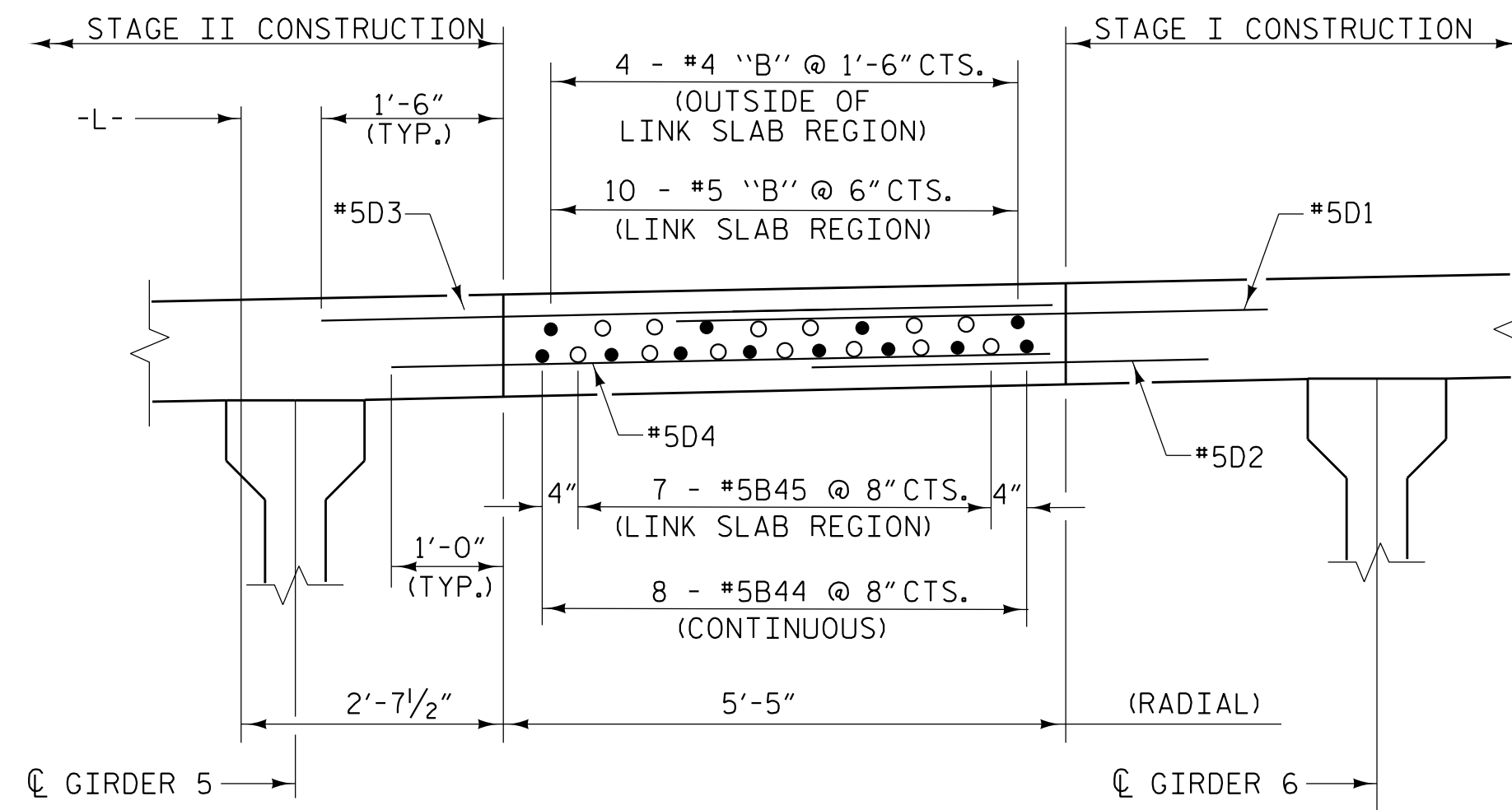
SECTION AT BENT

* METAL STAY-IN-PLACE FORMS SHALL NOT BE WELDED TO THE GIRDER FLANGES IN THE REGION OF THE LINK SLAB.



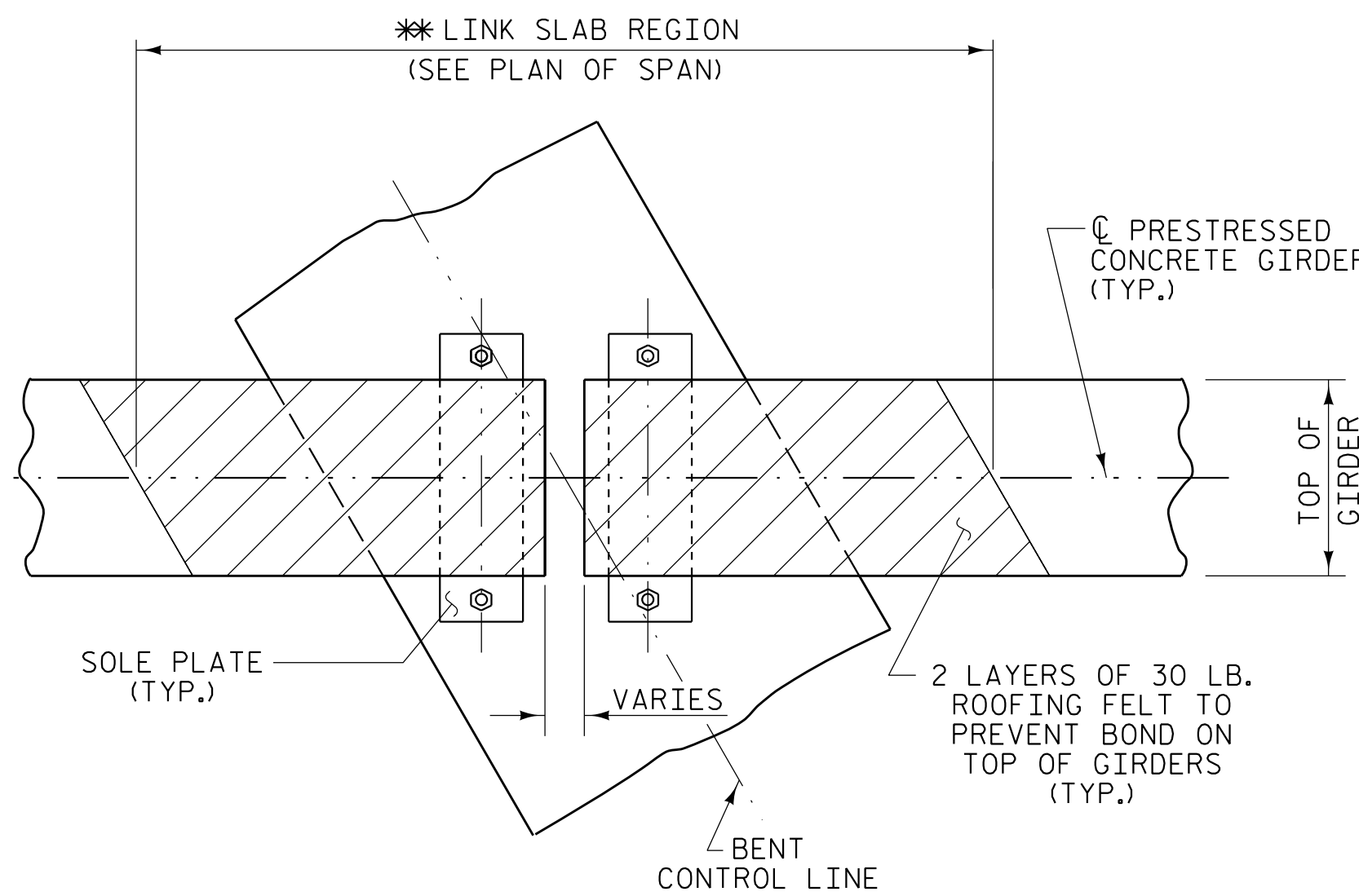
DETAIL "B"

A 1/2" DEEP, 3/8" WIDE CONTRACTION JOINT AT BENT CONTROL LINE SHALL BE SAWN WITHIN 24 HOURS OF POURING THE DECK. THE JOINT SHALL BE FILLED WITH JOINT SEALER MATERIAL. THE JOINT SEALER MATERIAL SHALL CONFORM TO THE REQUIREMENTS OF SECTION 1028-3 OF THE STANDARD SPECIFICATIONS.



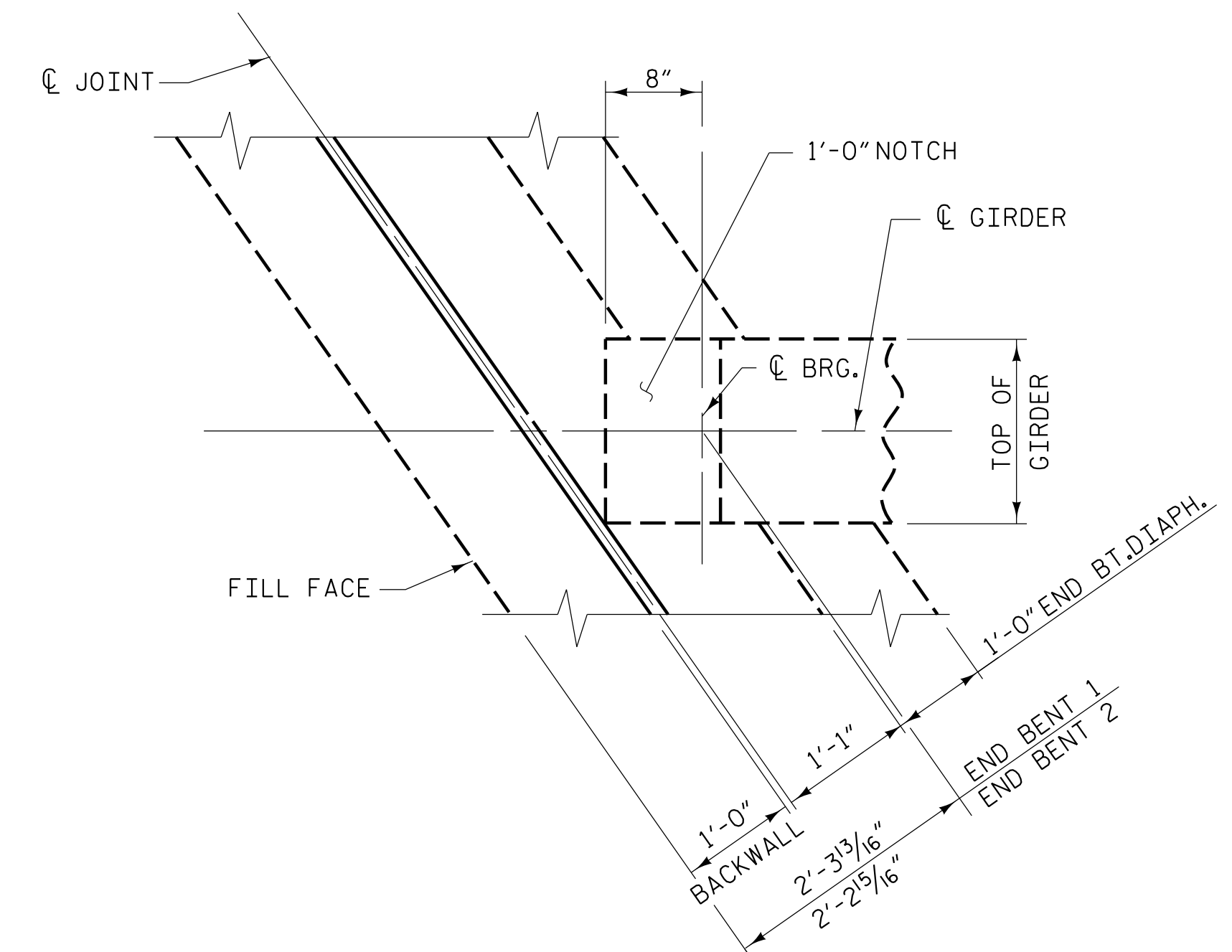
CLOSURE POUR DETAIL

SEE PLAN OF SPANS, SHEET 6 OF 6 FOR ADDITIONAL INFORMATION

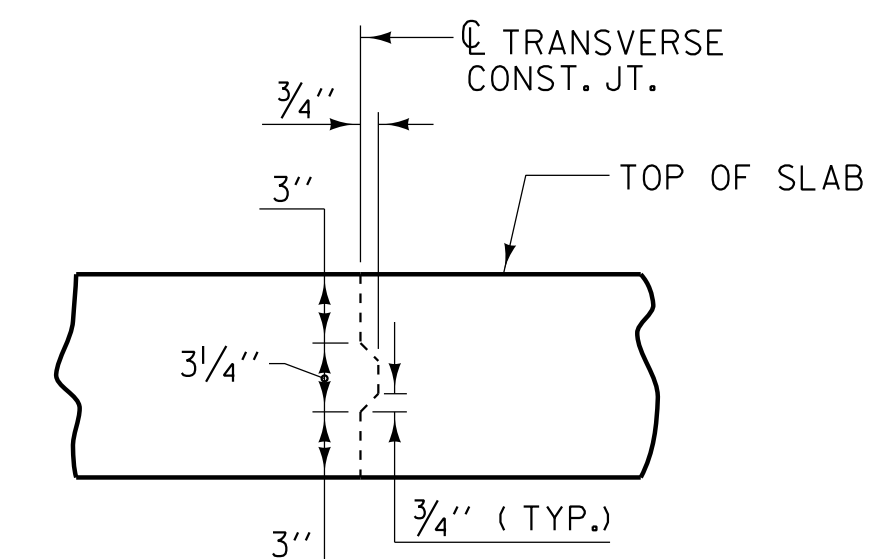


PLAN OF GIRDERS AT BENT

** THE TOP OF THE BEAM IN THE REGION OF THE LINK SLAB SHALL BE SMOOTH (NOT RAKED) AND FREE OF STIRRUPS, ANCHOR STUDS, DECK FORMWORK ATTACHMENTS AND OVERHANG FALSEWORK/ FORMWORK ATTACHMENTS.

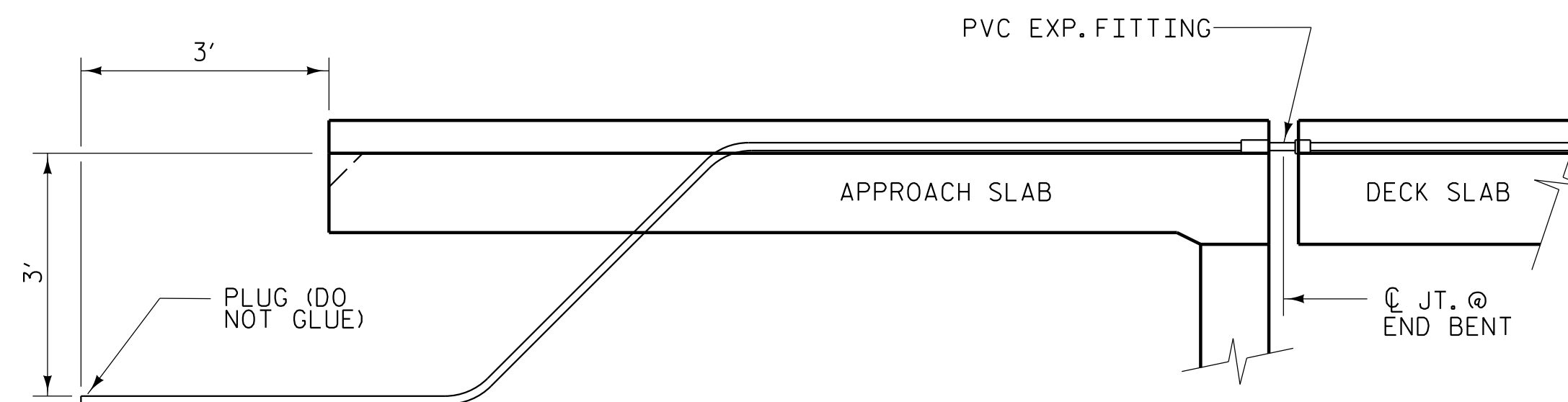


PLAN OF GIRDER AT END BENT



TRANSVERSE CONSTRUCTION JOINT DETAIL

NOTE: REINFORCING STEEL IN SLAB NOT SHOWN. LONGITUDINAL REINFORCING STEEL SHALL BE CONTINUOUS THRU JOINT



CONDUIT TERMINATION DETAIL

(ELEVATION VIEW AT APPROACH SLAB)

PLANS PREPARED BY:

NV5 ENGINEERS & CONSULTANTS, INC.
3300 REGENCY PARKWAY, SUITE 100
CARY, NC 27518
P: 919.851.1912 www.nv5.com
NC License # F-1333

DocuSigned by:

ROBERT C. LARSON
ENGINEER
14114

DOCUMENT NOT CONSIDERED FINAL UNLESS ALL SIGNATURES COMPLETED

PROJECT NO. U-5839
HAYWOOD COUNTY
STATION: 24+64.13 -L- POC

SHEET 5 OF 5

STATE OF NORTH CAROLINA DEPARTMENT OF TRANSPORTATION RALEIGH					
SUPERSTRUCTURE TYPICAL SECTION					
REVISIONS					SHEET NO.
NO.	BY:	DATE:	NO.	BY:	DATE:
1			3		
2			4		
					S1-11
					TOTAL SHEETS 63

5/17/2023 7:05:53 PM RA\Structures\3 span Bridge over RR\U0839.SML.TSS.430184.dgn

DRAWN BY: W. B. ALLEN DATE: 9/19
CHECKED BY: Z. H. BROWN DATE: 1/20
DESIGN ENGINEER OF RECORD: R. C. LARSON DATE: 4/23

DocuSigned by:

ROBERT C. LARSON
14114

5/18/2023