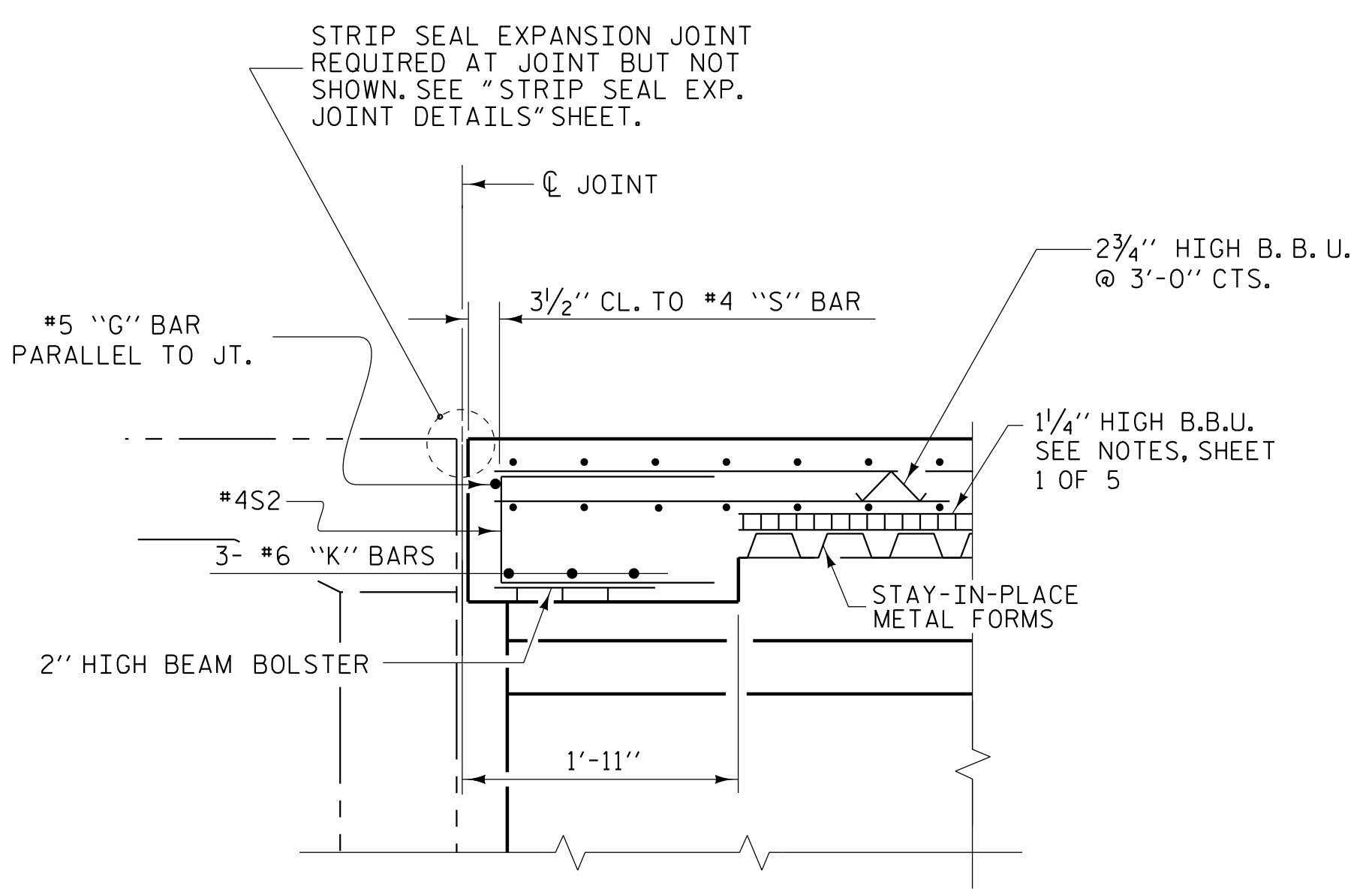
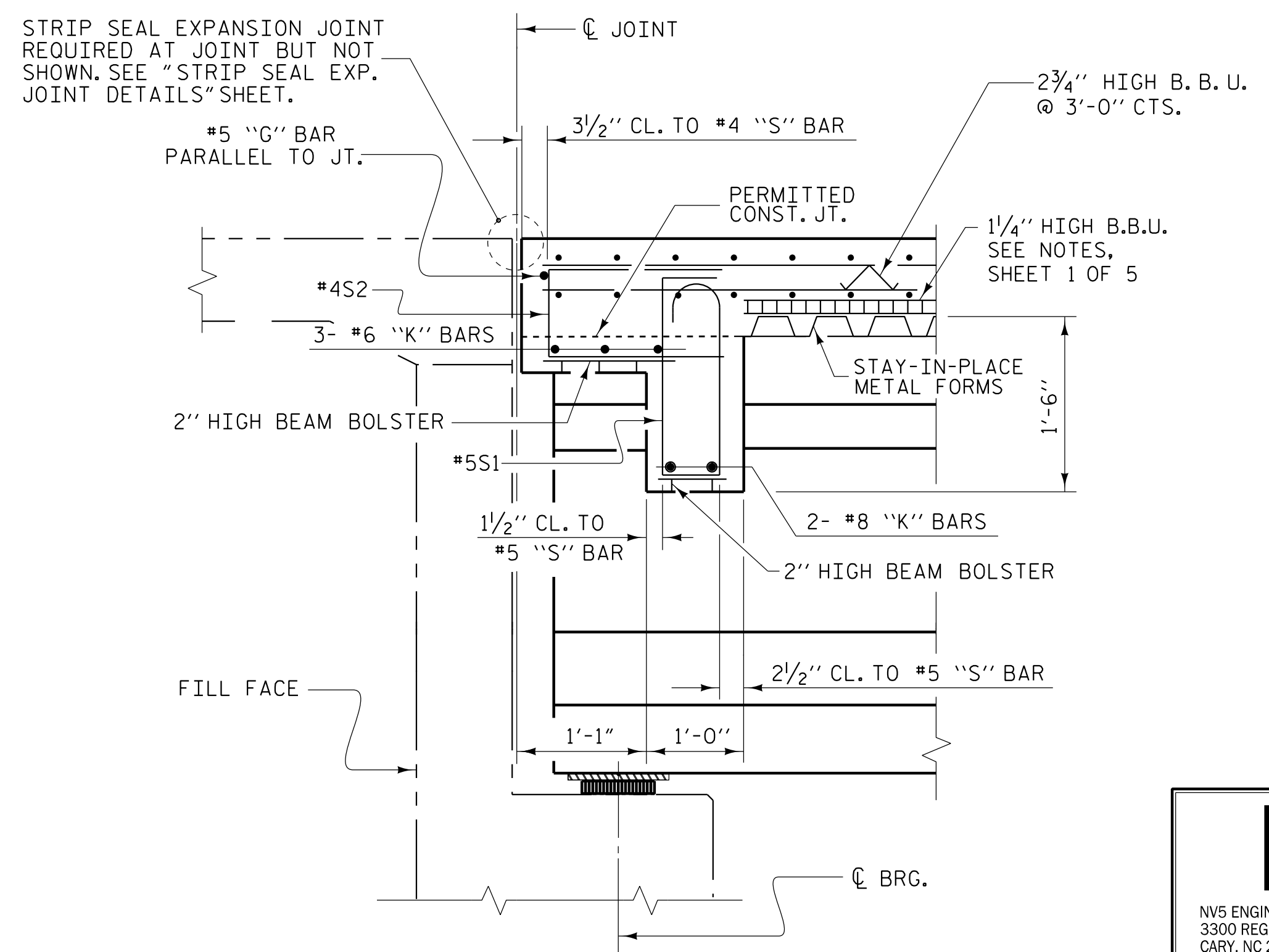


* RADIAL DIMENSIONS
 ** DIMENSIONS SHOWN ARE TO ARCS CONCENTRIC WITH C -L-. GIRDERS ARE LAID OUT ON CHORDS OF THESE CONCENTRIC ARCS THRU THE FILL FACE AT END BENTS AND CONTROL LINES AT INTERIOR BENTS.

TYPICAL HALF SECTION
 (SHOWING END BENT DIAPHRAGM)



PART SECTION A-A
 THRU RIGHT OVERHANG AT END BENT 1
 SEE "PLAN OF SPANS", SHEET 1 OF 6



SECTION THRU END BENT DIAPHRAGMS

PROJECT NO. U-5839
HAYWOOD COUNTY
 STATION: 24+64.13 -L- POC

SHEET 2 OF 5

STATE OF NORTH CAROLINA
 DEPARTMENT OF TRANSPORTATION
 RALEIGH

SUPERSTRUCTURE
TYPICAL SECTION

PLANS PREPARED BY:
N|V|5
 NV5 ENGINEERS & CONSULTANTS, INC.
 3300 REGENCY PARKWAY, SUITE 100
 CARY, NC 27518
 P: 919.851.1912 www.nv5.com
 NC License # F-1333

DocuSigned by:

 BEB2398D9220470
 5/18/2023

REVISIONS						SHEET NO.
NO.	BY:	DATE:	NO.	BY:	DATE:	S1-8
1			3			TOTAL SHEETS
2			4			63

DRAWN BY: W. B. ALLEN DATE: 9/19
 CHECKED BY: Z. H. BROWN DATE: 1/20
 DESIGN ENGINEER OF RECORD: R. C. LARSON DATE: 4/23

DocuSigned by:

 BEB2398D9220470

DOCUMENT NOT CONSIDERED FINAL
UNLESS ALL SIGNATURES COMPLETED

5/17/2023 7:05PM R:\Structures\3 span Bridge over RR\08 U5839_SML_T52_43084.dgn