

\* RADIAL DIMENSIONS  
 \*\* DIMENSIONS SHOWN ARE TO ARCS CONCENTRIC WITH C-L-L. GIRDERS ARE LAID OUT ON CHORDS OF THESE CONCENTRIC ARCS THRU THE FILL FACE AT END BENTS AND CONTROL LINES AT INTERIOR BENTS.

**NOTES:**

PROVIDE 1/4" HIGH BEAM BOLSTERS UPPER (BBU) AT 4'-0" CENTERS ATOP THE METAL STAY-IN-PLACE FORMS TO SUPPORT THE BOTTOM MAT OF "A" BARS. WHEN USING REMOVABLE FORMS, PROVIDE CONTINUOUS HIGH CHAIRS FOR METAL DECK (C.H.C.M.) @ 4'-0" CTS. WITH A HEIGHT TO SUPPORT THE BOTTOM MAT OF "A" BARS A CLEAR DISTANCE OF 2 1/2" ABOVE THE TOP OF THE REMOVABLE FORM.

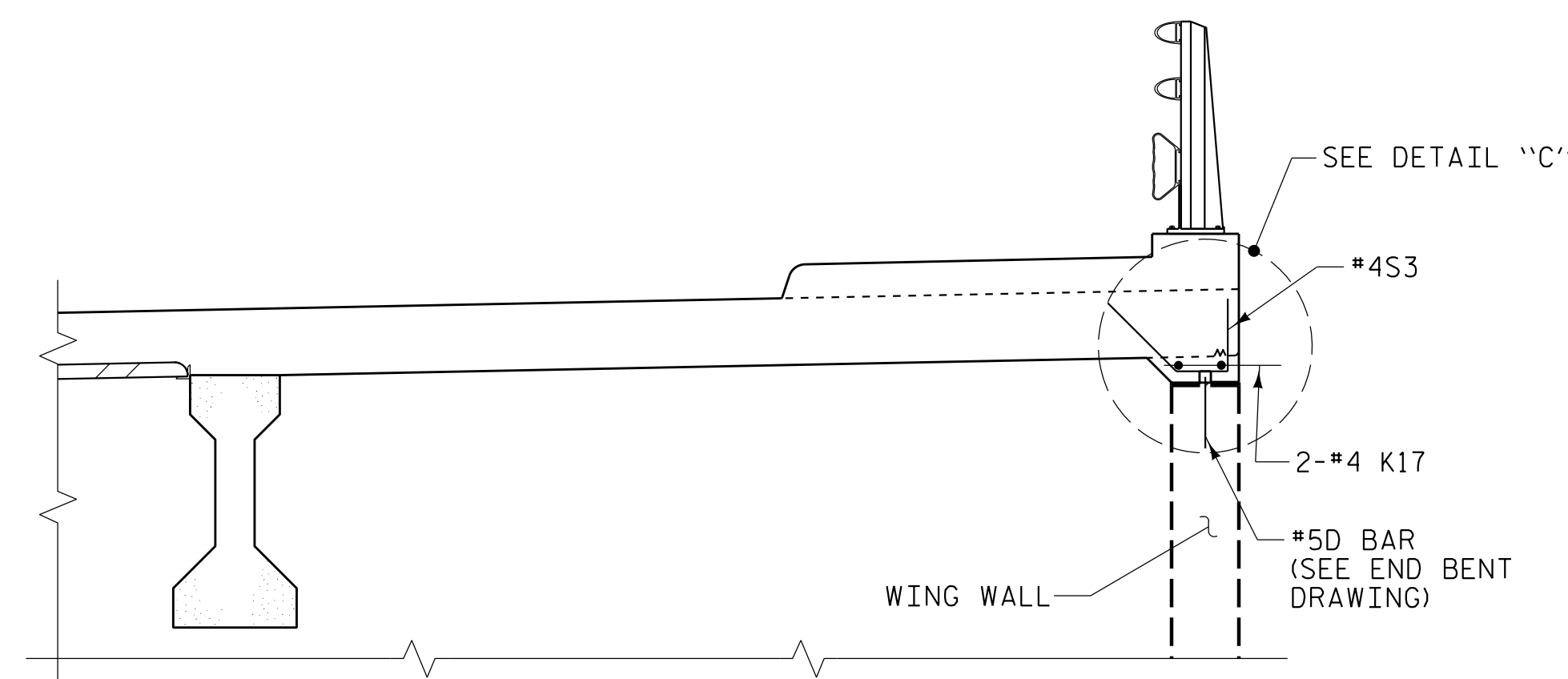
LONGITUDINAL STEEL MAY BE SHIFTED AS NECESSARY TO AVOID INTERFERENCE WITH STIRRUPS IN PRESTRESSED CONCRETE GIRDERS.

PREVIOUSLY CAST CONCRETE IN A CONTINUOUS UNIT SHALL HAVE ATTAINED A MINIMUM COMPRESSIVE STRENGTH OF 3,000 PSI BEFORE ADDITIONAL CONCRETE IS CAST IN THE UNIT.

FOR NUMBER OF S1 & S2 BARS IN EACH BAY SEE, "PLAN OF SPANS" SHEETS.

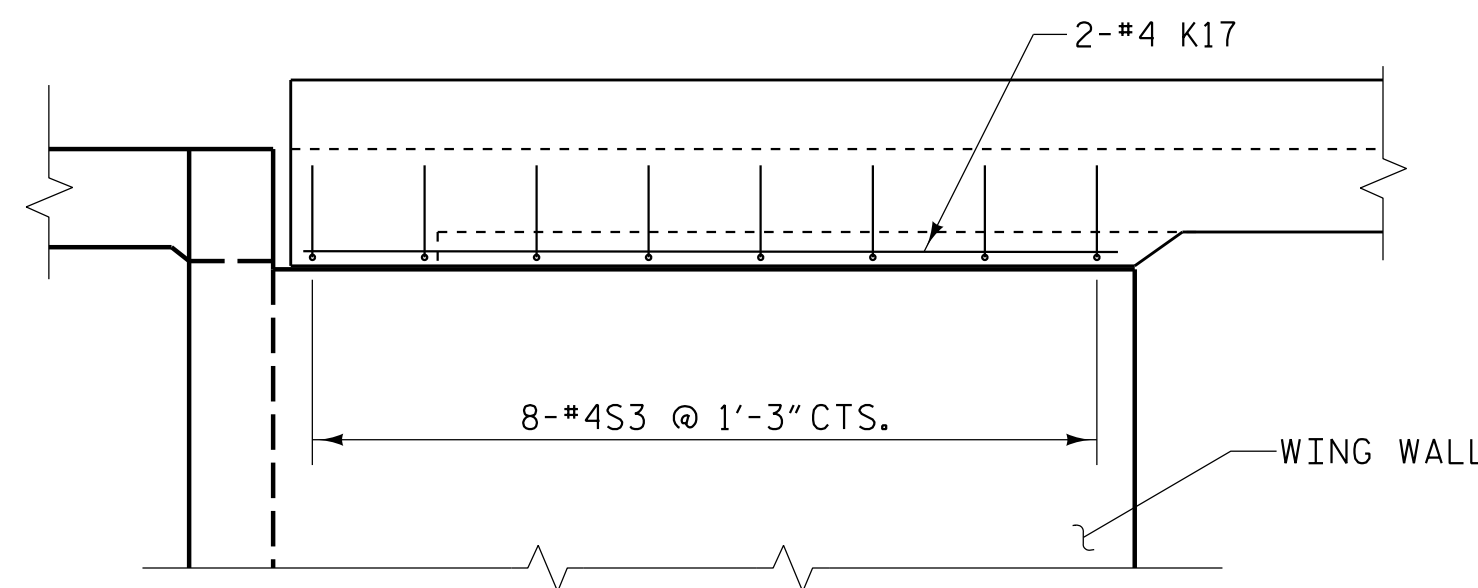
**TYPICAL HALF SECTION**

(SHOWING END BENT DIAPHRAGMS)



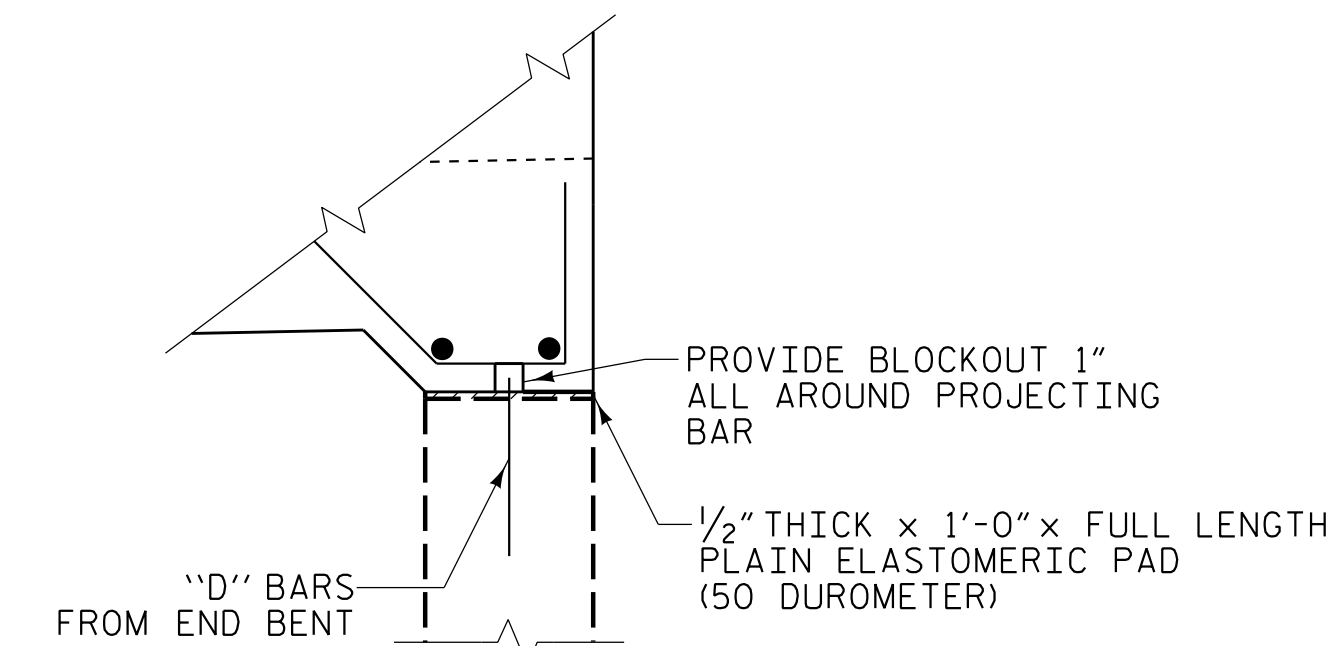
**PART SECTION C-C**

THRU RIGHT OVERHANG AT END BENT 1  
 SEE "PLAN OF SPANS", SHEET 1 OF 6

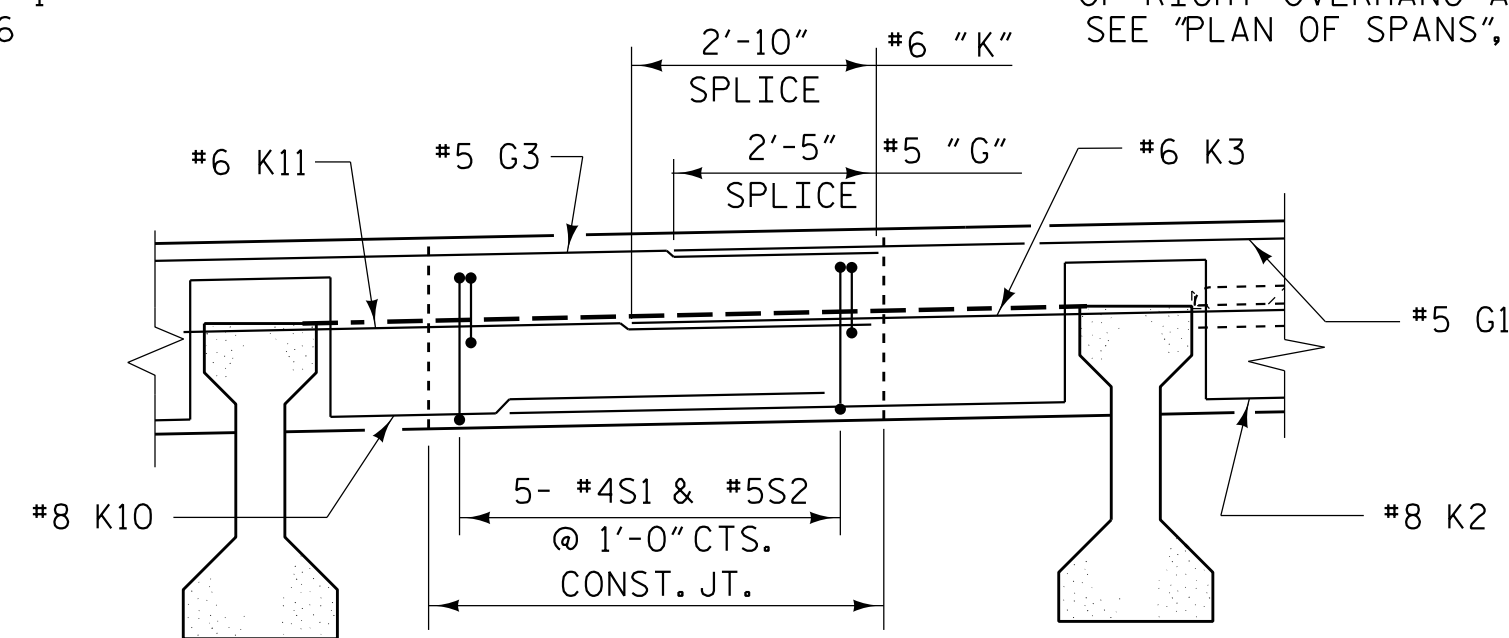


**ELEVATION B-B**

OF RIGHT OVERHANG AT END BENT 1  
 SEE "PLAN OF SPANS", SHEET 1 OF 6



**DETAIL 'C'**



**END DIAPHRAGM AT CLOSURE POUR**

REINFORCING STEEL IN DECK NOT SHOWN- SEE DETAIL ON SHEET 5 OF 5  
 BAR MARKS SHOWN FOR END BENT 1 - END BENT 2 SIMILAR

PROJECT NO. U-5839  
HAYWOOD COUNTY  
 STATION: 24+64.13 -L- POC

SHEET 1 OF 5

STATE OF NORTH CAROLINA  
 DEPARTMENT OF TRANSPORTATION  
 RALEIGH

SUPERSTRUCTURE  
 TYPICAL SECTION

REVISIONS

NO.	BY:	DATE:	NO.	BY:	DATE:	SHEET NO.
1			3			S1-7
2			4			TOTAL SHEETS
						63

PLANS PREPARED BY:

NV5 ENGINEERS & CONSULTANTS, INC.  
 3300 REGENCY PARKWAY, SUITE 100  
 CARY, NC 27518  
 P: 919.851.1912 www.nv5.com  
 NC License # F-1333

DocuSigned by:

ROBERT C. LARSON  
 ENGINEER  
 5/18/2023

**DOCUMENT NOT CONSIDERED FINAL  
 UNLESS ALL SIGNATURES COMPLETED**

5/17/2023 7:05PM R:\Structures\3 span Bridge over RR\07\_U5839\_SML\_TSI\_43084.dgn

DRAWN BY: W. B. ALLEN DATE: 9/19  
 CHECKED BY: Z. H. BROWN DATE: 1/20  
 DESIGN ENGINEER OF RECORD: R. C. LARSON DATE: 4/23