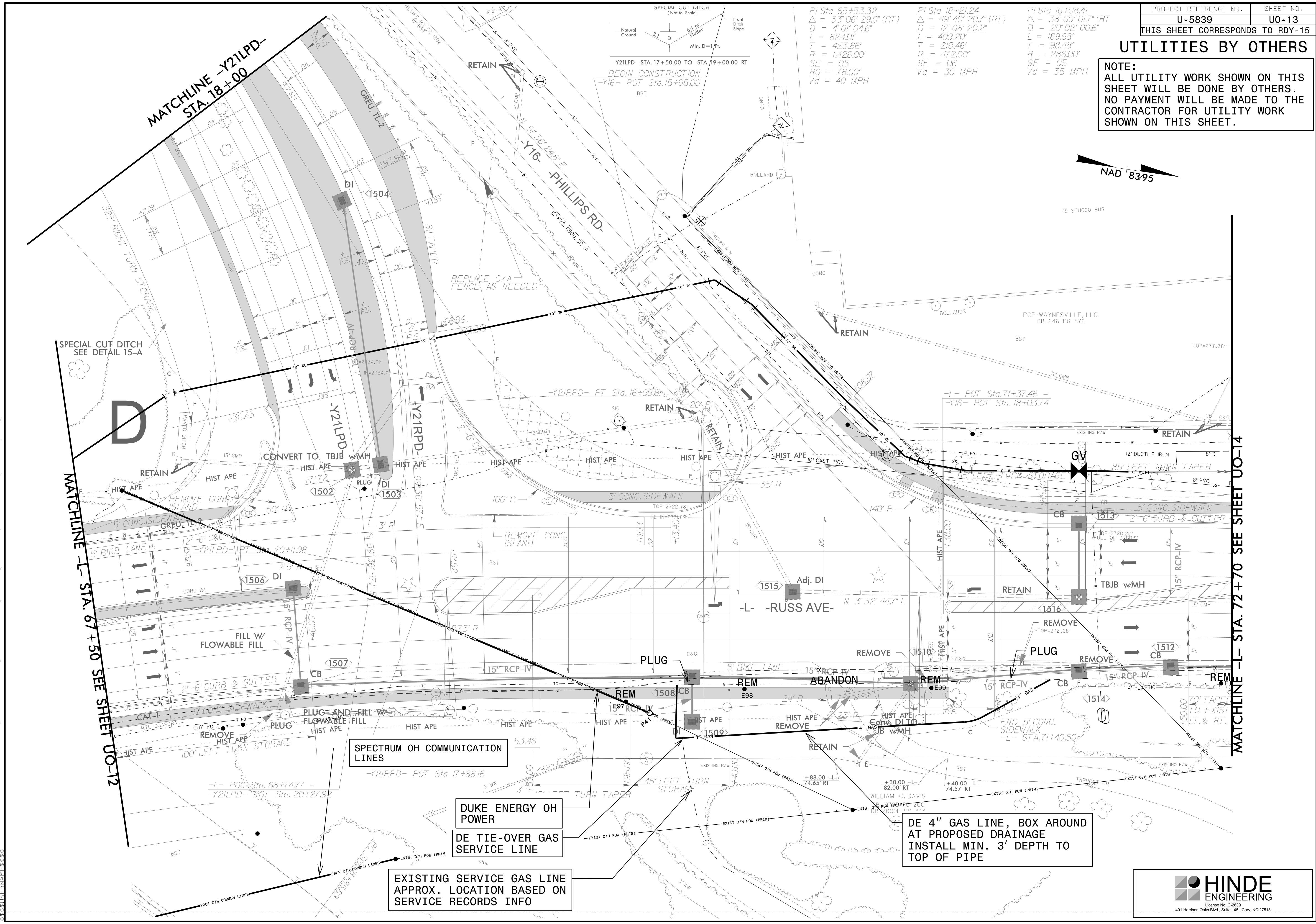
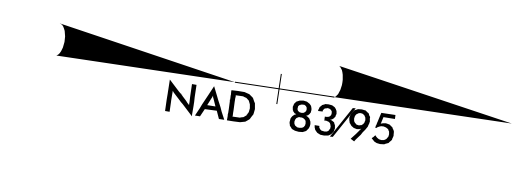
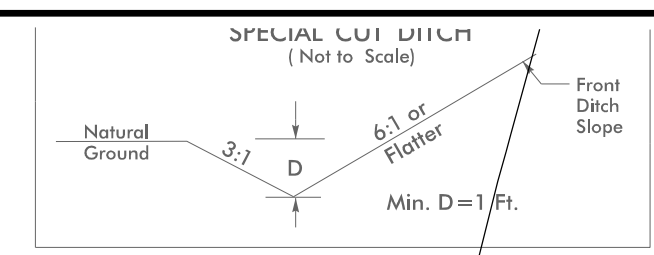


UTILITIES BY OTHERS

NOTE:
 ALL UTILITY WORK SHOWN ON THIS SHEET WILL BE DONE BY OTHERS. NO PAYMENT WILL BE MADE TO THE CONTRACTOR FOR UTILITY WORK SHOWN ON THIS SHEET.

PI Sta 65+53.32 $\Delta = 33^{\circ}06'29.0"$ (RT) $D = 4^{\circ}01'04.6"$ $L = 824.01'$ $T = 423.86'$ $R = 1,426.00'$ $SE = 05$ $RO = 78.00'$ $Vd = 40$ MPH	PI Sta 18+21.24 $\Delta = 49^{\circ}40'20.7"$ (RT) $D = 12^{\circ}08'20.2"$ $L = 409.20'$ $T = 218.46'$ $R = 472.00'$ $SE = 06$ $Vd = 30$ MPH	PI Sta 16+08.41 $\Delta = 38^{\circ}00'01.7"$ (RT) $D = 20^{\circ}02'00.6"$ $L = 189.68'$ $T = 98.48'$ $R = 286.00'$ $SE = 05$ $Vd = 35$ MPH
--	--	---



D

MATCHLINE -L- STA. 67 + 50 SEE SHEET U0-12

MATCHLINE -L- STA. 72 + 70 SEE SHEET U0-14

SPECTRUM OH COMMUNICATION LINES
 -Y21RPD- POT Sta. 17+88.16

DUKE ENERGY OH POWER
DE TIE-OVER GAS SERVICE LINE

EXISTING SERVICE GAS LINE
 APPROX. LOCATION BASED ON SERVICE RECORDS INFO

DE 4" GAS LINE, BOX AROUND AT PROPOSED DRAINAGE
 INSTALL MIN. 3' DEPTH TO TOP OF PIPE

REVISIONS

2015-MAR-20 10:18:01 U:\5839\PROJECTS\2015\A2015803\00_Mulkey - U-5839\Design\Utilities\Engineering\UBD\Proj\U5839_Ut_rdy\15_U013_psh.dgn
 15:58:58