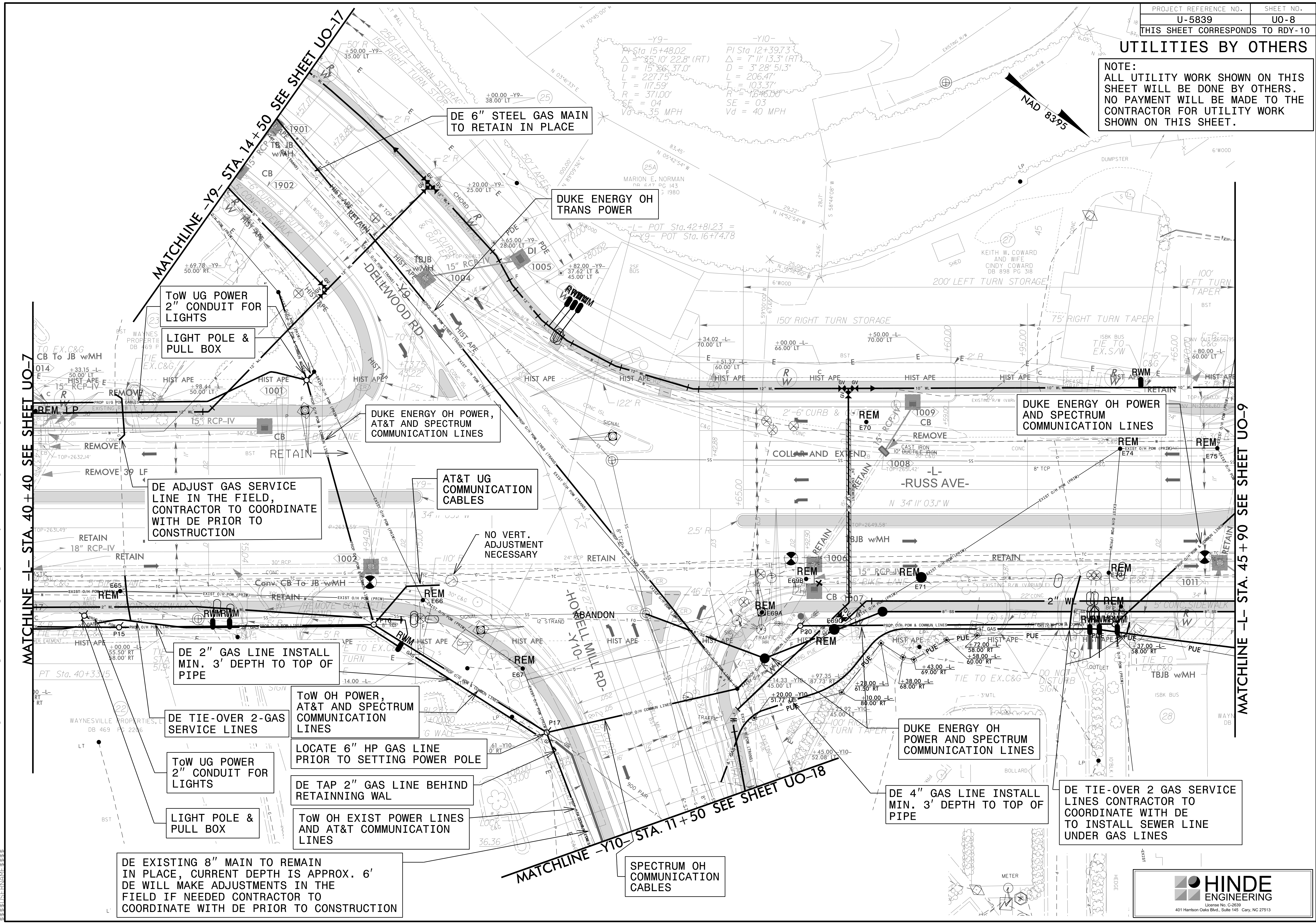


### UTILITIES BY OTHERS

NOTE:  
ALL UTILITY WORK SHOWN ON THIS SHEET WILL BE DONE BY OTHERS. NO PAYMENT WILL BE MADE TO THE CONTRACTOR FOR UTILITY WORK SHOWN ON THIS SHEET.



20-MAR-2017 10:01 AM U:\5839\Projects\2015\A2015803\00\_Mulkey - U-5839\Design\Utilities\Engineering\UBD01\ProJ\U5839\_Ut\_rdy10\_U08\_psh.dgn  
 MATCHLINE -L- STA. 40+40 SEE SHEET UO-7

MATCHLINE -L- STA. 45+90 SEE SHEET UO-9

DE EXISTING 8" MAIN TO REMAIN IN PLACE, CURRENT DEPTH IS APPROX. 6' DE WILL MAKE ADJUSTMENTS IN THE FIELD IF NEEDED CONTRACTOR TO COORDINATE WITH DE PRIOR TO CONSTRUCTION

DE TIE-OVER 2-GAS SERVICE LINES  
 TO W UG POWER 2" CONDUIT FOR LIGHTS  
 LIGHT POLE & PULL BOX

TO W OH POWER, AT&T AND SPECTRUM COMMUNICATION LINES  
 LOCATE 6" HP GAS LINE PRIOR TO SETTING POWER POLE  
 DE TAP 2" GAS LINE BEHIND RETAINING WALL  
 TO W OH EXIST POWER LINES AND AT&T COMMUNICATION LINES

DE ADJUST GAS SERVICE LINE IN THE FIELD, CONTRACTOR TO COORDINATE WITH DE PRIOR TO CONSTRUCTION

DUKE ENERGY OH POWER, AT&T AND SPECTRUM COMMUNICATION LINES

AT&T UG COMMUNICATION CABLES  
 NO VERT. ADJUSTMENT NECESSARY

DE 6" STEEL GAS MAIN TO RETAIN IN PLACE

DUKE ENERGY OH TRANS POWER

DUKE ENERGY OH POWER AND SPECTRUM COMMUNICATION LINES

DE 4" GAS LINE INSTALL MIN. 3' DEPTH TO TOP OF PIPE

DE TIE-OVER 2 GAS SERVICE LINES CONTRACTOR TO COORDINATE WITH DE TO INSTALL SEWER LINE UNDER GAS LINES

SPECTRUM OH COMMUNICATION CABLES