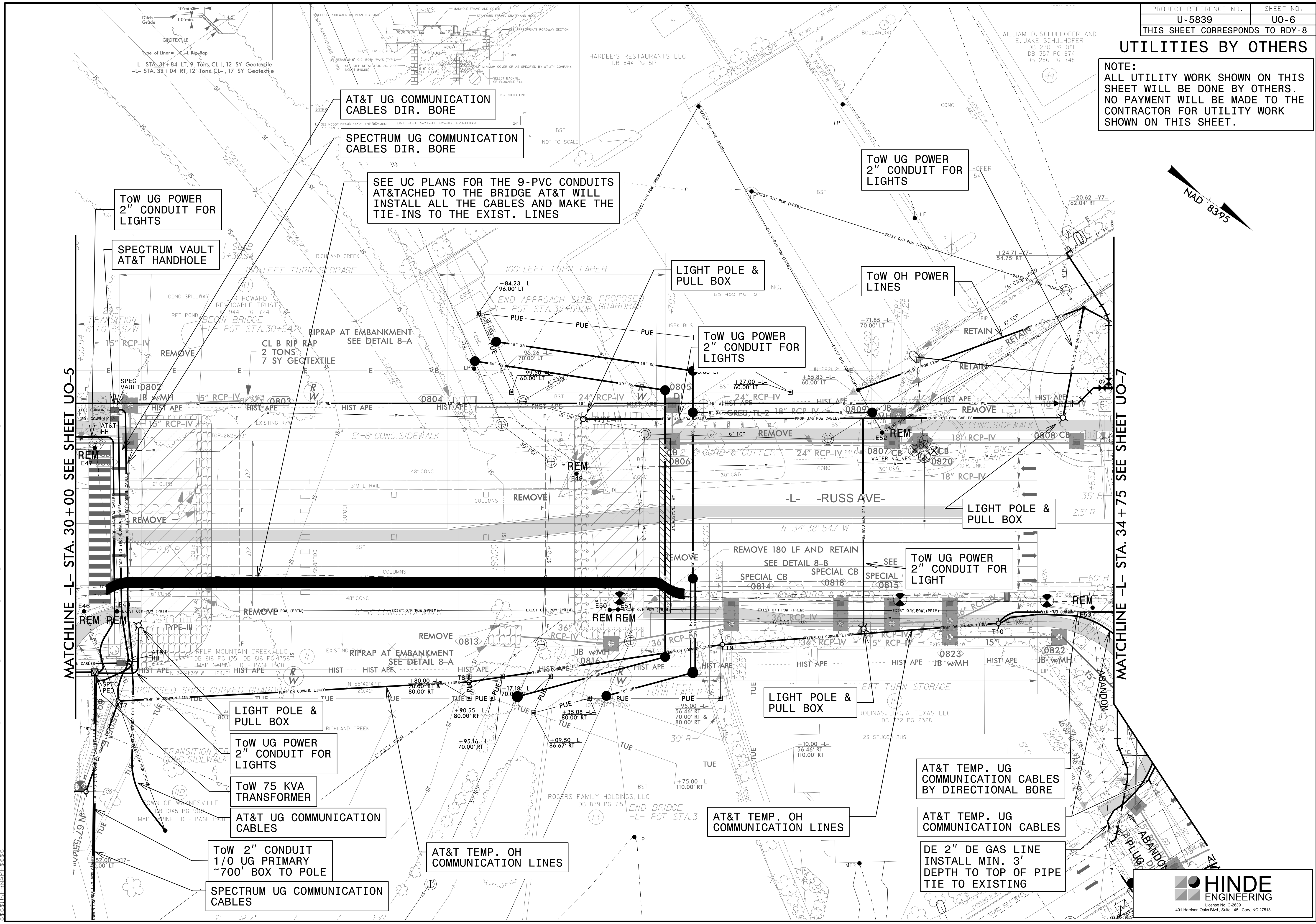
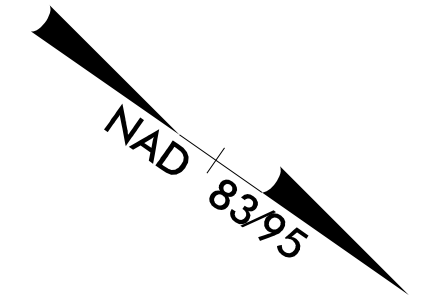


### UTILITIES BY OTHERS

NOTE:  
ALL UTILITY WORK SHOWN ON THIS SHEET WILL BE DONE BY OTHERS. NO PAYMENT WILL BE MADE TO THE CONTRACTOR FOR UTILITY WORK SHOWN ON THIS SHEET.



MATCHLINE -L- STA. 30 + 00 SEE SHEET UO-5

MATCHLINE -L- STA. 34 + 75 SEE SHEET UO-7

ToW UG POWER  
2" CONDUIT FOR  
LIGHTS

SPECTRUM VAULT  
AT&T HANDHOLE

AT&T UG COMMUNICATION  
CABLES DIR. BORE

SPECTRUM UG COMMUNICATION  
CABLES DIR. BORE

SEE UC PLANS FOR THE 9-PVC CONDUITS  
AT&TACHED TO THE BRIDGE AT&T WILL  
INSTALL ALL THE CABLES AND MAKE THE  
TIE-INS TO THE EXIST. LINES

ToW UG POWER  
2" CONDUIT FOR  
LIGHTS

LIGHT POLE &  
PULL BOX

ToW OH POWER  
LINES

ToW UG POWER  
2" CONDUIT FOR  
LIGHTS

LIGHT POLE &  
PULL BOX

ToW UG POWER  
2" CONDUIT FOR  
LIGHT

LIGHT POLE &  
PULL BOX

LIGHT POLE &  
PULL BOX

ToW UG POWER  
2" CONDUIT FOR  
LIGHTS

ToW 75 KVA  
TRANSFORMER

AT&T UG COMMUNICATION  
CABLES

ToW 2" CONDUIT  
1/0 UG PRIMARY  
~700' BOX TO POLE

SPECTRUM UG COMMUNICATION  
CABLES

AT&T TEMP. OH  
COMMUNICATION LINES

AT&T TEMP. OH  
COMMUNICATION LINES

AT&T TEMP. UG  
COMMUNICATION CABLES  
BY DIRECTIONAL BORE

AT&T TEMP. UG  
COMMUNICATION CABLES

DE 2" DE GAS LINE  
INSTALL MIN. 3'  
DEPTH TO TOP OF PIPE  
TIE TO EXISTING

29-MAR-2023 10:01 AM C:\PROJECTS\2015\A2015803\00\_Mulkey - U-5839\Utilities\Engineering\UB0\Pro\U5839\_Ut\_rdy8\_U06\_psh.dgn  
 3:38:51 PM  
 3:38:51 PM