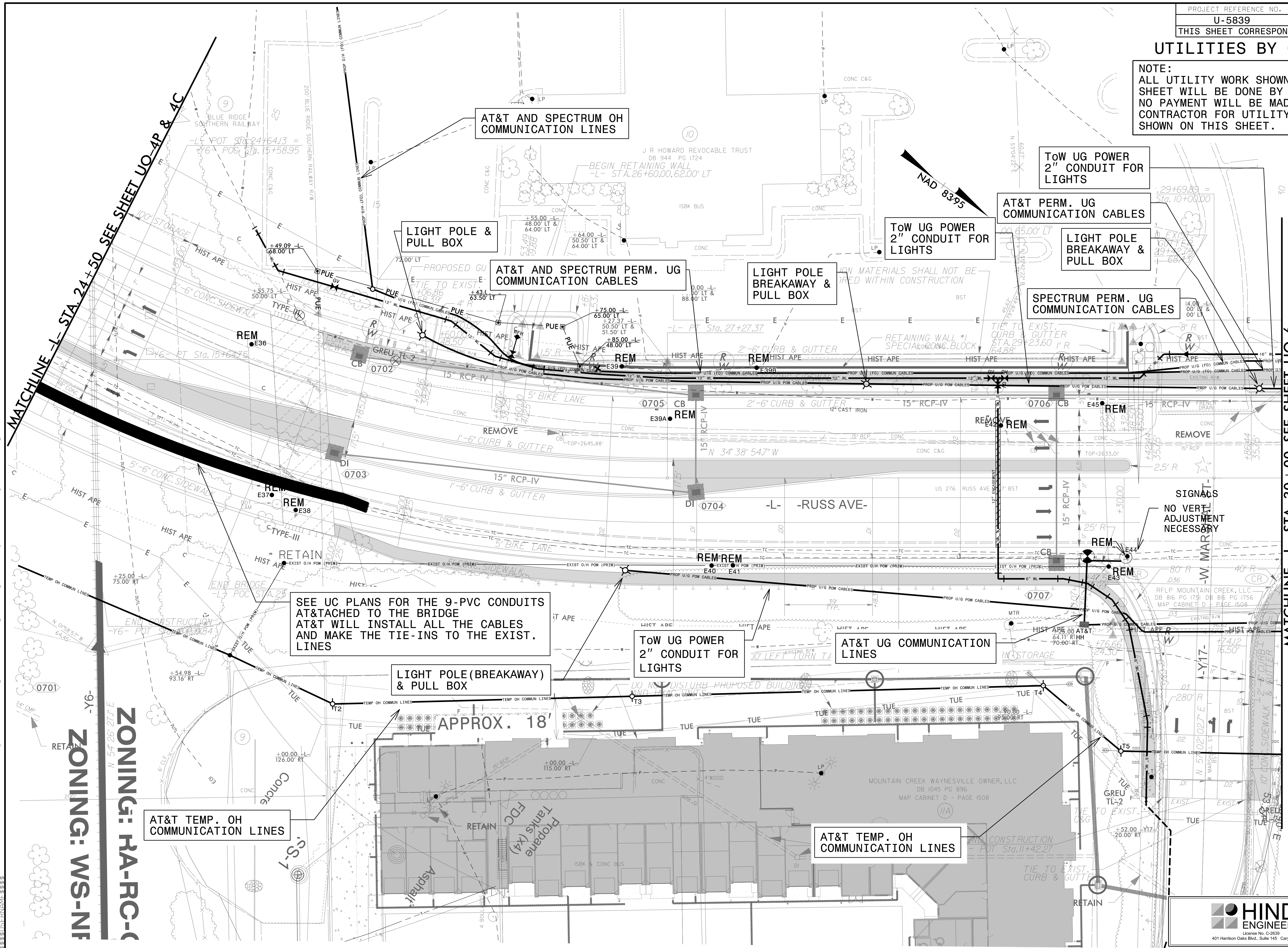


UTILITIES BY OTHERS

NOTE:
ALL UTILITY WORK SHOWN ON THIS SHEET WILL BE DONE BY OTHERS. NO PAYMENT WILL BE MADE TO THE CONTRACTOR FOR UTILITY WORK SHOWN ON THIS SHEET.



MATCHLINE -L- STA. 24+50 SEE SHEET UO-4P & 4C

MATCHLINE -L- STA. 30+00 SEE SHEET UO-6

AT&T AND SPECTRUM OH COMMUNICATION LINES

LIGHT POLE & PULL BOX

AT&T AND SPECTRUM PERM. UG COMMUNICATION CABLES

LIGHT POLE BREAKAWAY & PULL BOX

ToW UG POWER 2" CONDUIT FOR LIGHTS

ToW UG POWER 2" CONDUIT FOR LIGHTS

AT&T PERM. UG COMMUNICATION CABLES

LIGHT POLE BREAKAWAY & PULL BOX

SPECTRUM PERM. UG COMMUNICATION CABLES

SEE UC PLANS FOR THE 9-PVC CONDUITS ATTACHED TO THE BRIDGE AT&T WILL INSTALL ALL THE CABLES AND MAKE THE TIE-INS TO THE EXIST. LINES

LIGHT POLE (BREAKAWAY) & PULL BOX

ToW UG POWER 2" CONDUIT FOR LIGHTS

AT&T UG COMMUNICATION LINES

AT&T TEMP. OH COMMUNICATION LINES

AT&T TEMP. OH COMMUNICATION LINES

ZONING: RA-RC-C
ZONING: WS-NF

APPROX. 18'

REVISIONS
20-MAR-2017 2:31 PM PROJECTS\2015\A2015803.00 Mulkey - U-5839\Design\Utilities\Engineering\UBD\ProJ\U5839_Ut_rdy7_U05_psh.dgn