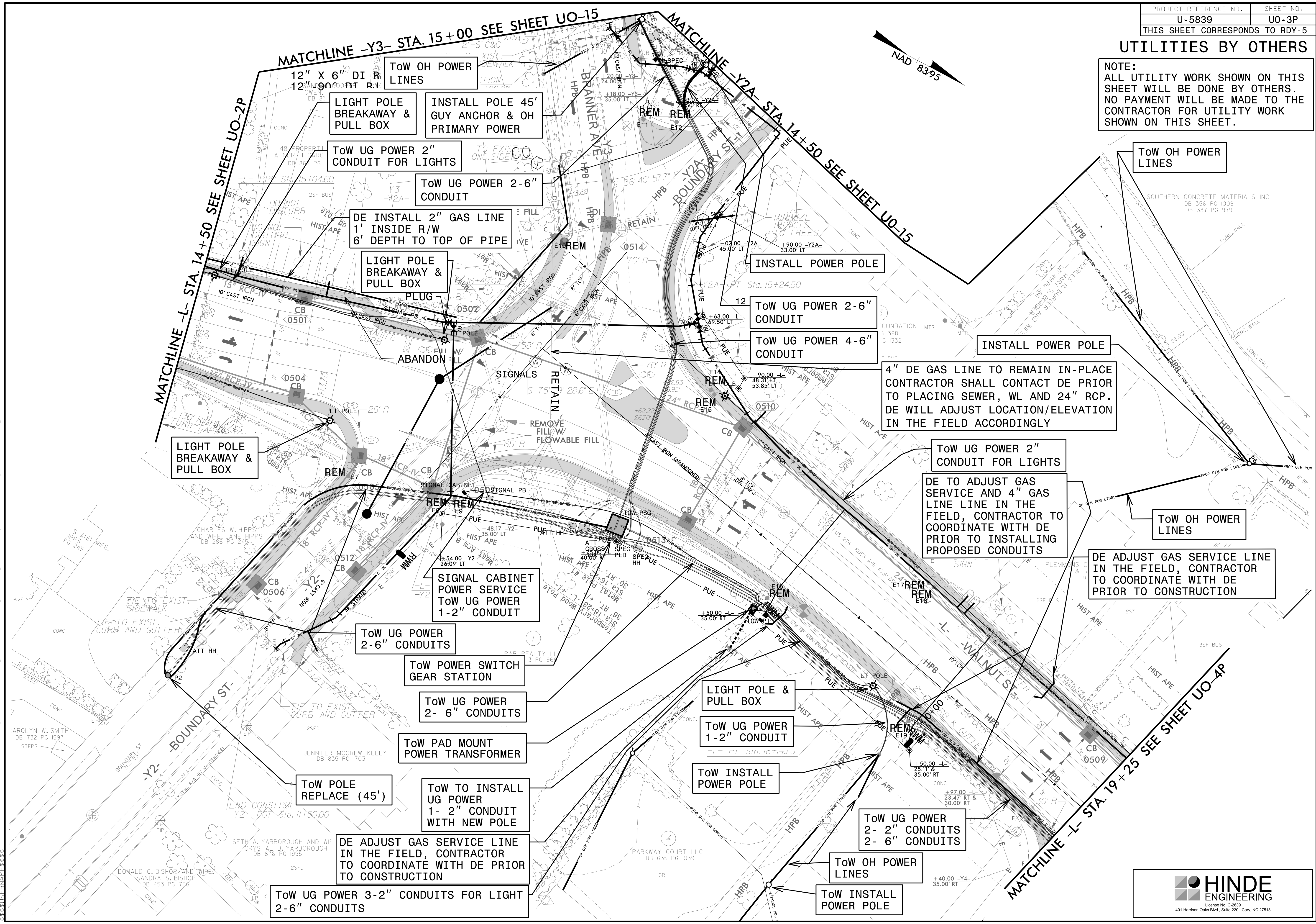


UTILITIES BY OTHERS

NOTE:
ALL UTILITY WORK SHOWN ON THIS SHEET WILL BE DONE BY OTHERS. NO PAYMENT WILL BE MADE TO THE CONTRACTOR FOR UTILITY WORK SHOWN ON THIS SHEET.

8/17/99
 20-MAR-2023 11:59
 C:\Users\jgibson\Documents\Projects\2015\A2015803.00 Mulkey - U-5839\Utilities\Engineering\UO-3P\UO3P_UO3P_psh.dgn



MATCHLINE -Y3- STA. 15+00 SEE SHEET UO-15

MATCHLINE -Y2A- STA. 14+50 SEE SHEET UO-15

MATCHLINE -L- STA. 14+50 SEE SHEET UO-2P

MATCHLINE -L- STA. 19+25 SEE SHEET UO-4P

12" X 6" DI R
12" 90° POINT R.I.
TOW OH POWER LINES
LIGHT POLE BREAKAWAY & PULL BOX
INSTALL POLE 45' GUY ANCHOR & OH PRIMARY POWER

TOW UG POWER 2" CONDUIT FOR LIGHTS
TOW UG POWER 2-6" CONDUIT

DE INSTALL 2" GAS LINE 1' INSIDE R/W 6' DEPTH TO TOP OF PIPE

LIGHT POLE BREAKAWAY & PULL BOX

PLUG
ABANDON

SIGNALS
RETAIN

REMOVE FILL/W FLOWABLE FILL

SIGNAL CABINET
POWER SERVICE
TOW UG POWER 1-2" CONDUIT

TOW UG POWER 2-6" CONDUITS

TOW POWER SWITCH GEAR STATION

TOW UG POWER 2-6" CONDUITS

TOW PAD MOUNT POWER TRANSFORMER

TOW POLE REPLACE (45')

TOW TO INSTALL UG POWER 1-2" CONDUIT WITH NEW POLE

DE ADJUST GAS SERVICE LINE IN THE FIELD, CONTRACTOR TO COORDINATE WITH DE PRIOR TO CONSTRUCTION

TOW UG POWER 3-2" CONDUITS FOR LIGHT 2-6" CONDUITS

INSTALL POWER POLE

TOW UG POWER 2-6" CONDUIT

TOW UG POWER 4-6" CONDUIT

4" DE GAS LINE TO REMAIN IN-PLACE CONTRACTOR SHALL CONTACT DE PRIOR TO PLACING SEWER, WL AND 24" RCP. DE WILL ADJUST LOCATION/ELEVATION IN THE FIELD ACCORDINGLY

TOW UG POWER 2" CONDUIT FOR LIGHTS

DE TO ADJUST GAS SERVICE AND 4" GAS LINE IN THE FIELD, CONTRACTOR TO COORDINATE WITH DE PRIOR TO INSTALLING PROPOSED CONDUITS

DE ADJUST GAS SERVICE LINE IN THE FIELD, CONTRACTOR TO COORDINATE WITH DE PRIOR TO CONSTRUCTION

LIGHT POLE & PULL BOX

TOW UG POWER 1-2" CONDUIT

TOW INSTALL POWER POLE

TOW UG POWER 2-2" CONDUITS 2-6" CONDUITS

TOW OH POWER LINES

TOW INSTALL POWER POLE

TOW OH POWER LINES

SOUTHERN CONCRETE MATERIALS INC
DB 356 PG 1009
DB 337 PG 979

TOW OH POWER LINES