

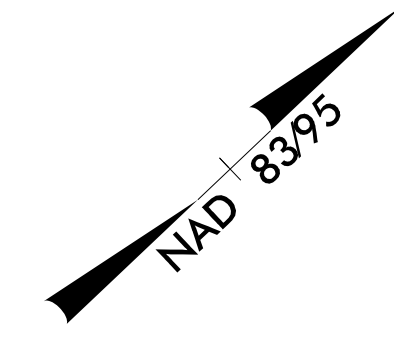
PROJECT REFERENCE NO.	SHEET NO.
U-5839	UC-18
DESIGNED BY: CDB	
DRAWN BY: ASW	
CHECKED BY: CLS	
APPROVED BY: CDB	
REVISED:	
NORTH CAROLINA DEPARTMENT OF TRANSPORTATION	
UTILITY ENGINEERING SEC. PHONE: (919) 707-6690 FAX: (919) 250-4151	
UTILITY CONSTRUCTION PLANS ONLY	

WATER AND SEWER PLANS

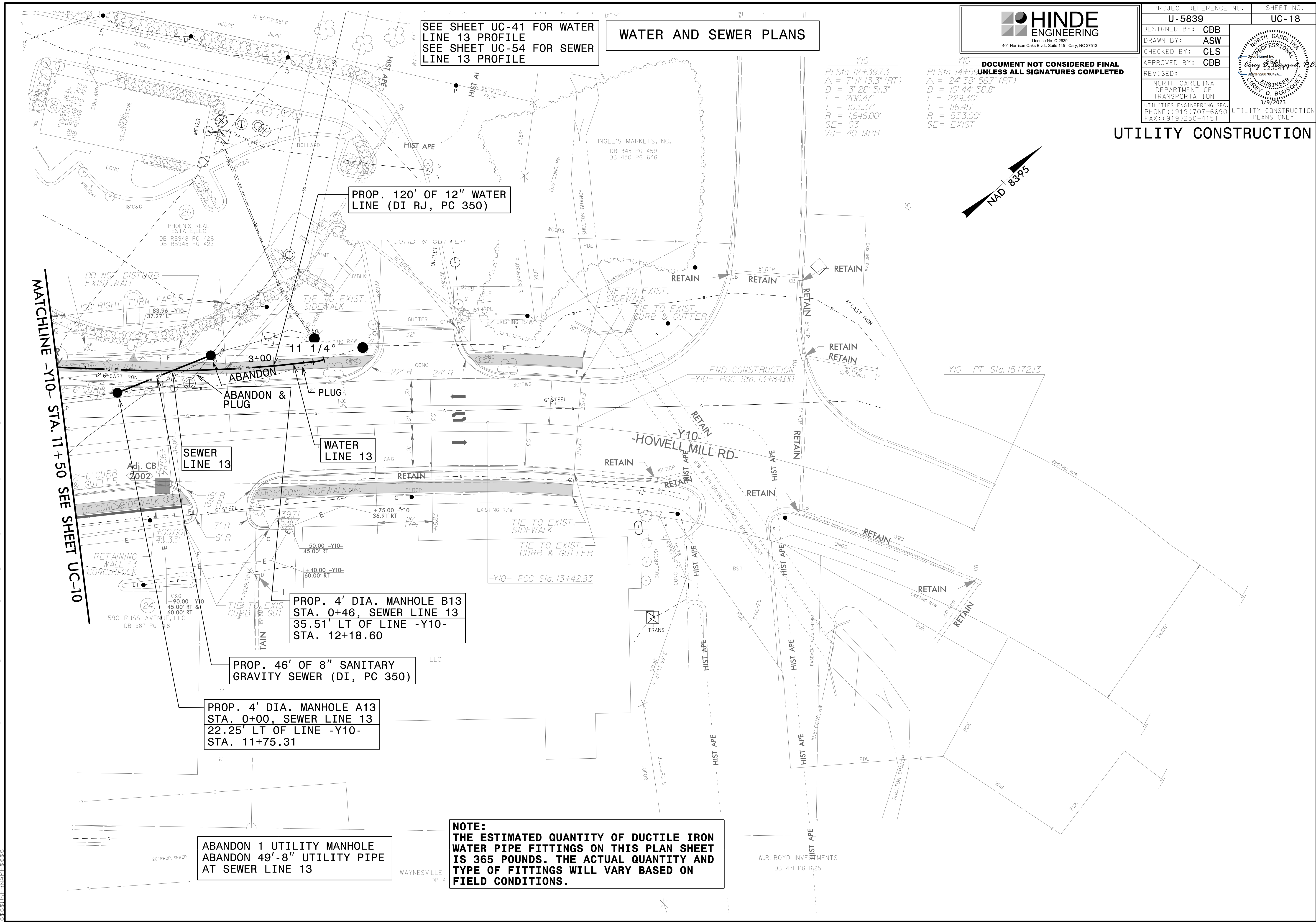
SEE SHEET UC-41 FOR WATER LINE 13 PROFILE
 SEE SHEET UC-54 FOR SEWER LINE 13 PROFILE

-Y10-
 PI Sta. 12+39.73
 $\Delta = 7' 11" 13.3" (RT)$
 $D = 3' 28' 51.3"$
 $L = 206.47'$
 $T = 103.37'$
 $R = 1,646.00'$
 $SE = 03$
 $Vd = 40 MPH$

-Y10-
 PI Sta. 14+59.00
 $\Delta = 24' 58' 56.7" (RT)$
 $D = 10' 44' 58.8"$
 $L = 229.30'$
 $T = 116.45'$
 $R = 533.00'$
 $SE = EXIST$



UTILITY CONSTRUCTION



PROP. 120' OF 12" WATER LINE (DI RJ, PC 350)

PROP. 4' DIA. MANHOLE B13
 STA. 0+46, SEWER LINE 13
 35.51' LT OF LINE -Y10-
 STA. 12+18.60

PROP. 46' OF 8" SANITARY GRAVITY SEWER (DI, PC 350)

PROP. 4' DIA. MANHOLE A13
 STA. 0+00, SEWER LINE 13
 22.25' LT OF LINE -Y10-
 STA. 11+75.31

ABANDON 1 UTILITY MANHOLE
 ABANDON 49'-8" UTILITY PIPE
 AT SEWER LINE 13

NOTE:
 THE ESTIMATED QUANTITY OF DUCTILE IRON WATER PIPE FITTINGS ON THIS PLAN SHEET IS 365 POUNDS. THE ACTUAL QUANTITY AND TYPE OF FITTINGS WILL VARY BASED ON FIELD CONDITIONS.

MATCHLINE -Y10- STA. 11+50 SEE SHEET UC-10

20-MAR-2023 15:24 PROJECTS\2015\A2015803.00 Mulkey - U-5839\Design\Utilities\Engineering\UC-Proj\U5839_Ut_rdy20 UC18_psh.dgn