

-Y9-	-Y9-	-Y9-
PI Sta 11+03.95	PI Sta 13+19.87	PI Sta 15+48.02
$\Delta = 3^{\circ} 04' 15.7" (LT)$	$\Delta = 15^{\circ} 56' 26.3" (LT)$	$\Delta = 35^{\circ} 10' 22.8" (RT)$
$D = 1^{\circ} 28' 38.8"$	$D = 7^{\circ} 09' 43.1"$	$D = 15^{\circ} 26' 37.0"$
$L = 207.86'$	$L = 222.57'$	$L = 227.75'$
$T = 103.95'$	$T = 112.01'$	$T = 117.59'$
$R = 3,878.00'$	$R = 800.00'$	$R = 371.00'$
$SE = EXIST$	$SE = 04$	$SE = 04$
	$Vd = 35 MPH$	$Vd = 35 MPH$

SEE SHEET UC-32 FOR WATER LINE 11 PROFILE
 SEE SHEET UC-33 THRU UC-40 FOR WATER LINE 12 PROFILE
 SEE SHEET UC-47 FOR SEWER LINE 5A PROFILE

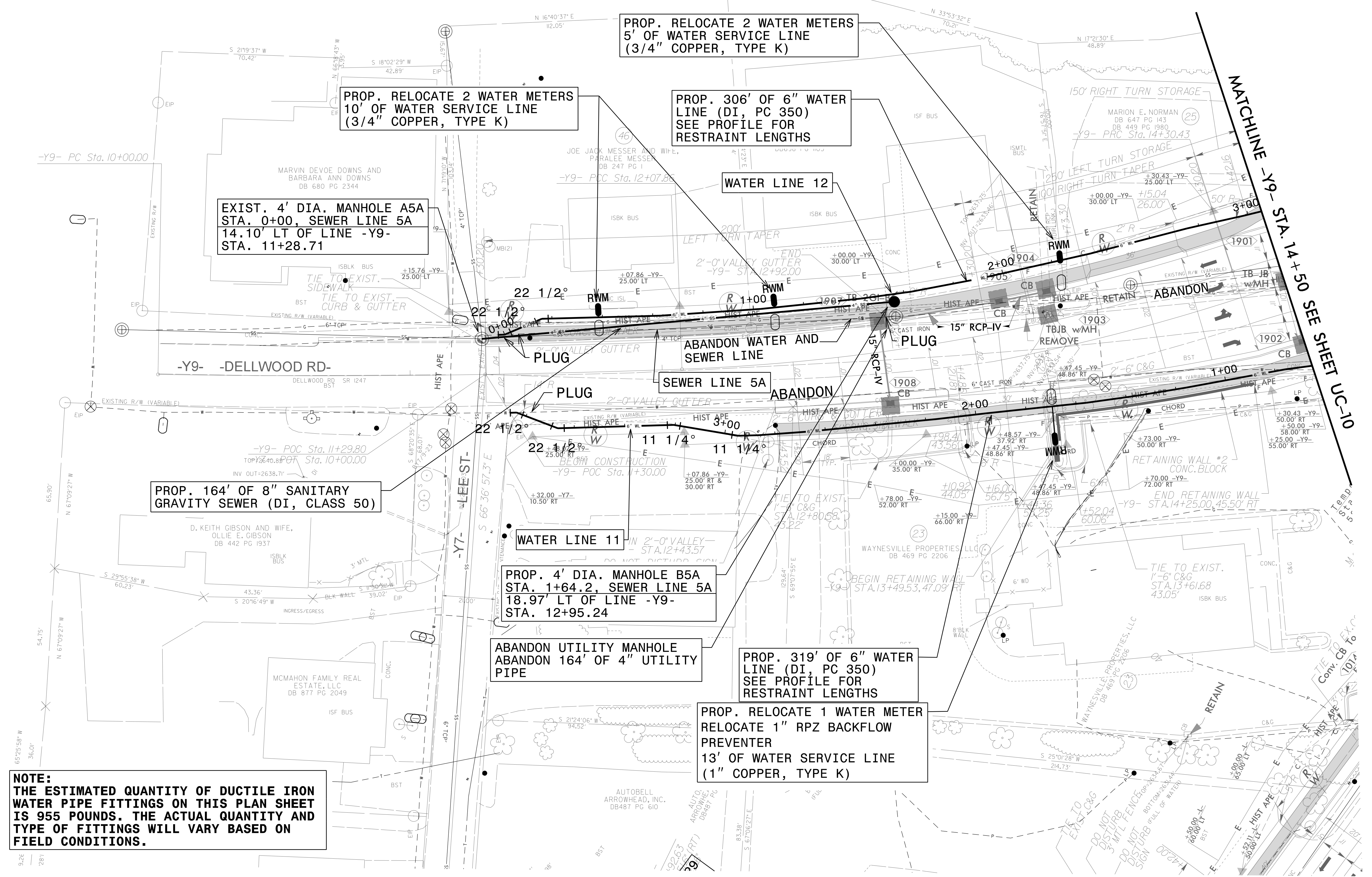
WATER AND SEWER PLANS

HINDE ENGINEERING
 License No. C-2639
 401 Harrison Oaks Blvd., Suite 145 Cary, NC 27513

DOCUMENT NOT CONSIDERED FINAL UNLESS ALL SIGNATURES COMPLETED

PROJECT REFERENCE NO.	SHEET NO.
U-5839	UC-17
DESIGNED BY: CDB	
DRAWN BY: ASW	
CHECKED BY: CLS	
APPROVED BY: CDB	
REVISD:	
NORTH CAROLINA DEPARTMENT OF TRANSPORTATION UTILITIES ENGINEERING SEC. PHONE: (919) 707-6690 FAX: (919) 250-4151 UTILITY CONSTRUCTION PLANS ONLY	

UTILITY CONSTRUCTION



NOTE:
 THE ESTIMATED QUANTITY OF DUCTILE IRON WATER PIPE FITTINGS ON THIS PLAN SHEET IS 955 POUNDS. THE ACTUAL QUANTITY AND TYPE OF FITTINGS WILL VARY BASED ON FIELD CONDITIONS.

20-MAR-2023 15:24 PROJECTS\2015\A2015803\00 Mulkey - U-5839\Design\Utilities\Engineering\UC-Prj\U5839_Ut_r.dwg UC17_psh.dgn
 3:38:51 PM