

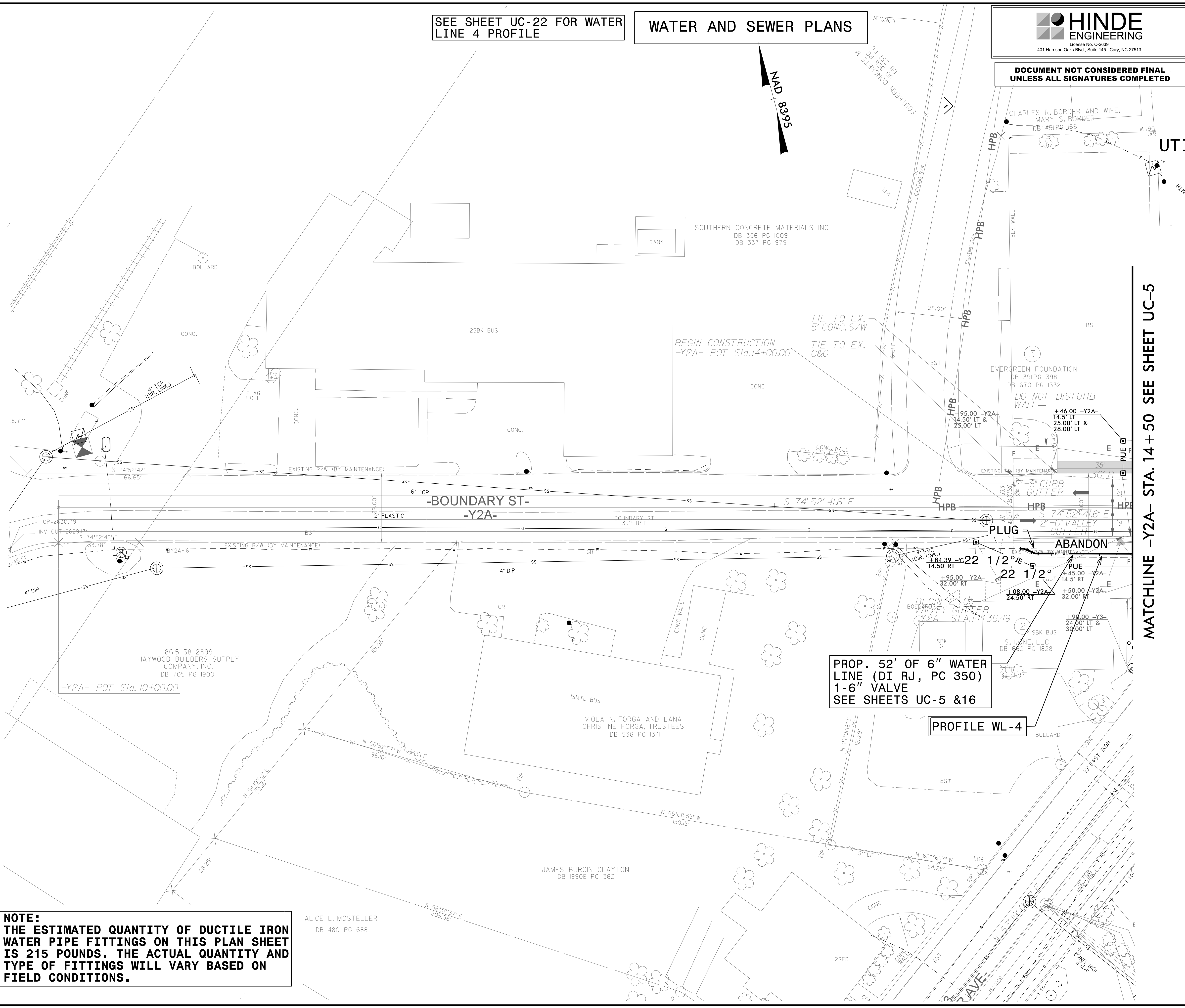
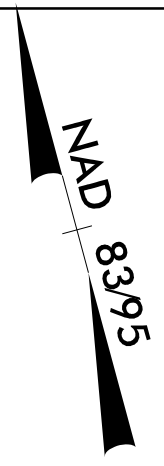
PROJECT REFERENCE NO.	SHEET NO.
U-5839	UC-16
DESIGNED BY: CDB	
DRAWN BY: ASW	
CHECKED BY: CLS	
APPROVED BY: CDB	
REVISED:	
NORTH CAROLINA DEPARTMENT OF TRANSPORTATION	
UTILITIES ENGINEERING SEC. PHONE: (919) 707-6690 FAX: (919) 250-4151	
UTILITY CONSTRUCTION PLANS ONLY	

HINDE ENGINEERING
 License No. C-2639
 401 Harrison Oaks Blvd., Suite 145 Cary, NC 27513

**DOCUMENT NOT CONSIDERED FINAL
 UNLESS ALL SIGNATURES COMPLETED**

SEE SHEET UC-22 FOR WATER LINE 4 PROFILE

WATER AND SEWER PLANS



MATCHLINE -Y2A- STA. 14 +50 SEE SHEET UC-5

PROP. 52' OF 6" WATER LINE (DI RJ, PC 350) 1-6" VALVE SEE SHEETS UC-5 & 16

PROFILE WL-4

NOTE:
 THE ESTIMATED QUANTITY OF DUCTILE IRON WATER PIPE FITTINGS ON THIS PLAN SHEET IS 215 POUNDS. THE ACTUAL QUANTITY AND TYPE OF FITTINGS WILL VARY BASED ON FIELD CONDITIONS.

C:\Users\jls24\Documents\Projects\2015\A2015803\00_Mulkey - U-5839\Design\Utilities\Engineering\UC-Prj\U5839_Ut_r.dwg UC16_psh.dgn 20-MAR-2023 15:24