

HINDE ENGINEERING
 License No. C-2639
 401 Harrison Oaks Blvd., Suite 145 Cary, NC 27513

**DOCUMENT NOT CONSIDERED FINAL
 UNLESS ALL SIGNATURES COMPLETED**

PROJECT REFERENCE NO. U-5839	SHEET NO. UC-14
DESIGNED BY: CDB	
DRAWN BY: ASW	
CHECKED BY: CLS	
APPROVED BY: CDB	
REVISED:	
NORTH CAROLINA DEPARTMENT OF TRANSPORTATION UTILITIES ENGINEERING SEC. PHONE: (919) 707-6690 FAX: (919) 250-4151	
3/9/2023 UTILITY CONSTRUCTION PLANS ONLY	

WATER AND SEWER PLANS

SEE SHEET UC-33 THRU UC-40 FOR WATER LINE 12 PROFILE

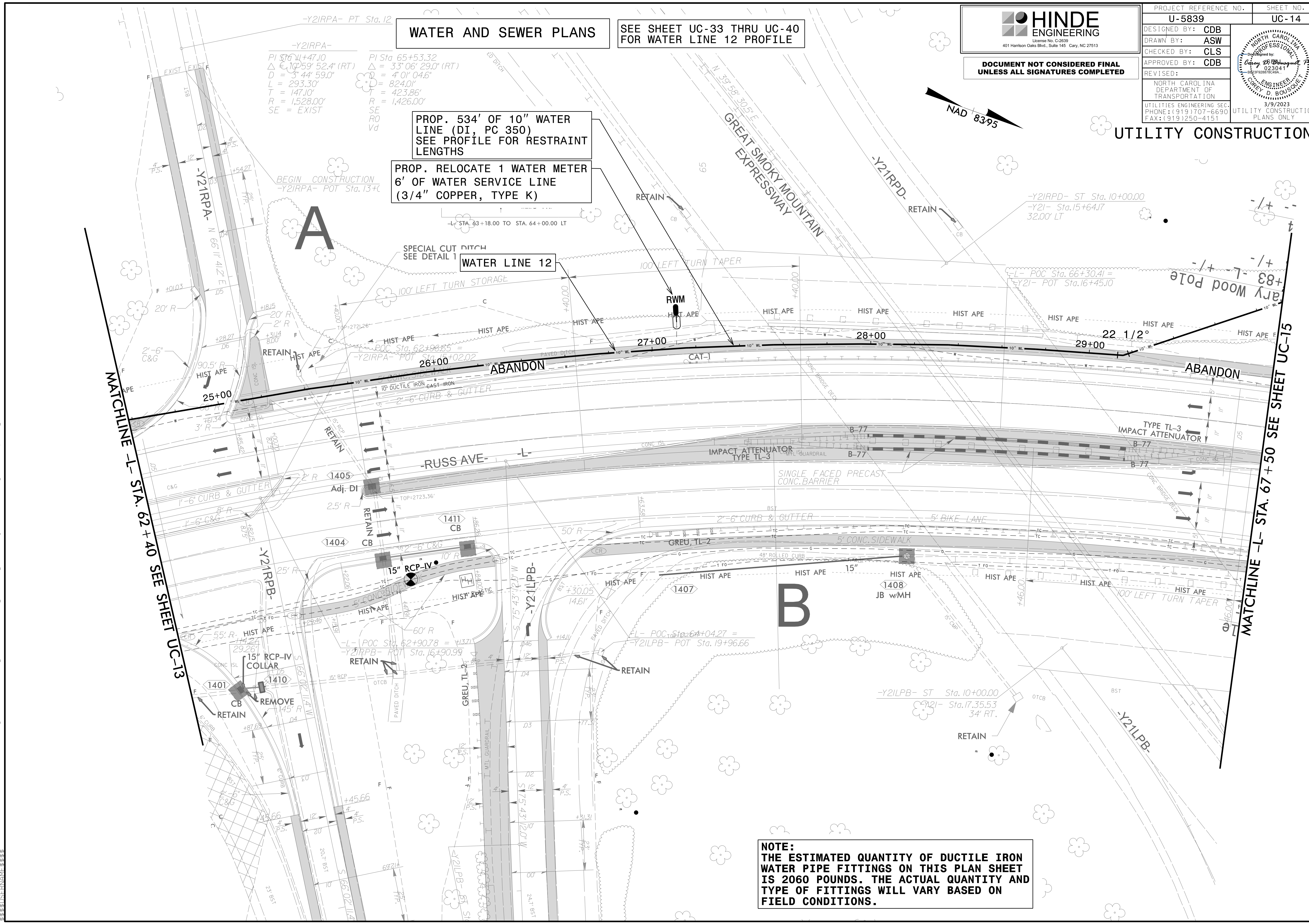
-Y2IRPA-
 PI Sta. 61+47.10
 $\Delta = 102^{\circ}59'52.4"$ (RT)
 $D = 3^{\circ}44'59.0"$
 $L = 293.30'$
 $T = 147.10'$
 $R = 1,528.00'$
 SE = EXIST

-Y2IRPA-
 PI Sta. 65+53.32
 $\Delta = 33^{\circ}06'29.0"$ (RT)
 $D = 4^{\circ}01'04.6"$
 $L = 824.01'$
 $T = 423.86'$
 $R = 1,426.00'$
 SE RO Vd

PROP. 534' OF 10" WATER LINE (DI, PC 350) SEE PROFILE FOR RESTRAINT LENGTHS

PROP. RELOCATE 1 WATER METER 6' OF WATER SERVICE LINE (3/4" COPPER, TYPE K)

WATER LINE 12



MATCHLINE -L- STA. 62+40 SEE SHEET UC-13

MATCHLINE -L- STA. 67+50 SEE SHEET UC-15

NOTE:
THE ESTIMATED QUANTITY OF DUCTILE IRON WATER PIPE FITTINGS ON THIS PLAN SHEET IS 2060 POUNDS. THE ACTUAL QUANTITY AND TYPE OF FITTINGS WILL VARY BASED ON FIELD CONDITIONS.

03-MAR-2023 15:24
 C:\Users\jmc\Documents\Projects\2015\A2015803\00_Mulkey - U-5839\Design\Utilities\Engineering\UC-Proj\U5839_Ut_-rdj14_UC14_psh.dgn