

SEE SHEET UC-33 THRU UC-40 FOR WATER LINE 12 PROFILE
SEE SHEET UC-48 FOR SEWER LINE 6 PROFILE
SEE SHEET UC-49 FOR SEWER LINE 7 PROFILE
SEE SHEET UC-50 AND UC-51 FOR SEWER LINE 8 PROFILE
SEE SHEET UC-52 FOR SEWER LINE 9 PROFILE

PROP. 4' DIA. MANHOLE B7 STA. 0+40, SEWER LINE 7
41.13' RT OF LINE -L- STA. 48+62.29

PROP. 40' OF 10" SANITARY GRAVITY SEWER (DI, PC 350)

EXIST. 4' DIA. MANHOLE F6 STA. 4+68.02, SEWER LINE 6
67.20' RT OF LINE -L- STA. 47+76.16

PROP. 565' OF 10" WATER LINE (DI, PC 350)
1-10" VALVE
SEE PROFILE FOR RESTRAINT LENGTHS

PROP. RELOCATE 2 WATER METERS
20' OF WATER SERVICE LINE (10'-1" PE TUBING, SDR 9,
10'-COPPER TYPE K)

PROP. 44' OF 8" SANITARY GRAVITY SEWER (DI, PC 350)

PROP. 4' DIA. MANHOLE E6 STA. 4+17, SEWER LINE 6
66.64' RT OF LINE -L- STA. 47+25.13

PROP. 4' DIA. MANHOLE D6 STA. 3+73, SEWER LINE 6
47.10' RT OF LINE -L- STA. 46+85.72

PROP. 96' OF 8" SANITARY GRAVITY SEWER (DI, PC 350)

WATER AND SEWER PLANS

PROP. 4' DIA. MANHOLE A8 STA. 0+00, SEWER LINE 8
21.95' LT OF LINE -L- STA. 48+41.28

PROP. 52' OF 8" SANITARY GRAVITY SEWER (DI, PC 350)

PROP. 4' DIA. MANHOLE B9 STA. 0+45, SEWER LINE 9
94.10' LT OF LINE -L- STA. 48+82.68

PROP. 45' OF 8" SANITARY GRAVITY SEWER (DI, PC 350)

PROP. 4' DIA. MANHOLE EQ2 STA. 0+52, SEWER LINE 8
STA. 0+00, SEWER LINE 9
49.20' LT OF LINE -L- STA. 48+85.57

PROP. 18' OF 8" SANITARY GRAVITY SEWER (DI, PC 350)

PROP. 4' DIA. MANHOLE B8 STA. 0+70, SEWER LINE 8
58.63' LT OF LINE -L- STA. 49+00.90

PROP. 135' OF 8" SANITARY GRAVITY SEWER (DI, PC 350)

ABANDON & PLUG

SEWER LINE 9

ABANDON

PLUG

ABANDON

ABANDON

ABANDON

PLUG

PROP. 4' DIA. MANHOLE A7 STA. 0+00, SEWER LINE 7
61.94' RT OF LINE -L- STA. 48+28.12

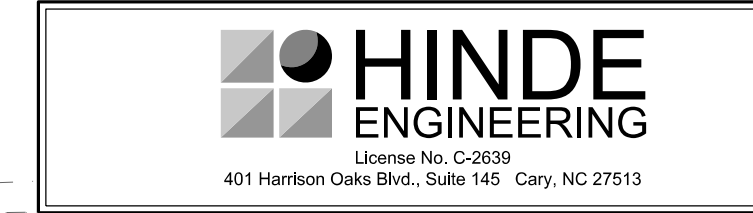
PROP. 51' OF 8" SANITARY GRAVITY SEWER (DI, PC 350)

PROP. 2" X 1" HDPE REDUCER
RELOCATE 1 WATER METER
33' OF WATER SERVICE LINE (20'-1" PE TUBING, SDR 9,
13'-COPPER TYPE K)
1" RPZ BACKFLOW PREVENTION ASSEMBLY

PROP. 176' OF 10" SANITARY GRAVITY SEWER (DI, PC 350)

PROP. 4' DIA. MANHOLE C7 STA. 2+15.48, SEWER LINE 7
47.00' RT OF LINE -L- STA. 50+37.67

HDPE FITTINGS ARE INCIDENTAL TO RELOCATE WATER METERS ALONG THE 2" PE TUBING



DOCUMENT NOT CONSIDERED FINAL UNLESS ALL SIGNATURES COMPLETED

ABANDON 3 UTILITY MANHOLES
ABANDON 84'-4" UTILITY PIPE
ABANDON 112'-6" UTILITY PIPE
ABANDON 713'-8" UTILITY PIPE AT SEWER LINE 6,7,8 AND 9

UTILITY CONSTRUCTION

PROP. 4' DIA. MANHOLE C8 STA. 2+05, SEWER LINE 8
59.72' LT OF LINE -L- STA. 50+35.90

PROP. 18' OF 6" WATER LINE (DI RJ, PC 350)
1-6" VALVE

PROP. 60' OF 8" SANITARY GRAVITY SEWER (DI, PC 350)

PROP. 57' OF 8" SANITARY GRAVITY SEWER (DI, PC 350)

PROP. 4' DIA. MANHOLE D8 STA. 2+62, SEWER LINE 8
41.49' LT OF LINE -L- STA. 50+89.90

PROP. 12" X 6" TEE
PLUG

PROP. 18" RCP-IV

PROP. 18" RCP-IV

PROP. 18" RCP-IV

PROP. 18" RCP-IV

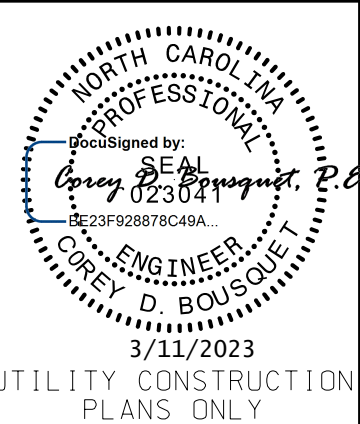
PROP. 78' OF 10" SANITARY GRAVITY SEWER (DI, PC 350)

PROP. 4' DIA. MANHOLE D7 STA. 2+93.48, SEWER LINE 7
46.76' RT OF LINE -L- STA. 51+15.67

PROP. 34' OF 10" SANITARY GRAVITY SEWER (DI, PC 350)

NOTE: THE ESTIMATED QUANTITY OF DUCTILE IRON WATER PIPE FITTINGS ON THIS PLAN SHEET IS 1395 POUNDS. THE ACTUAL QUANTITY AND TYPE OF FITTINGS WILL VARY BASED ON FIELD CONDITIONS.

PROJECT REFERENCE NO.	U-5839
SHEET NO.	UC-11
DESIGNED BY:	CDB
DRAWN BY:	ASW
CHECKED BY:	CLS
APPROVED BY:	CDB
REVISED:	
NORTH CAROLINA DEPARTMENT OF TRANSPORTATION	
UTILITIES ENGINEERING SEC. PHONE: (919) 707-6690 FAX: (919) 250-4151	
UTILITY CONSTRUCTION PLANS ONLY	



MATCHLINE -L- STA. 45 + 90 SEE SHEET UC-10

MATCHLINE -L- STA. 51 + 50 SEE SHEET UC-12

MATCHLINE -Y13- STA. 11 + 40 SEE SHEET UC-19

U:\MAR-2023\084\PROJECTS\2015\A2015803\00_Makekey - U-5839\Design\Utilities\Engineering\UC-Proj\U5839_Ut_-regul1_UC11_psh.dgn