



SEE SHEET UC-32 FOR WATER LINE 11 PROFILE
SEE SHEET UC-33 THRU UC-40 FOR WATER LINE 12 PROFILE
SEE SHEET UC-41 FOR WATER LINE 13 PROFILE
SEE SHEET UC-48 FOR SEWER LINE 6 PROFILE

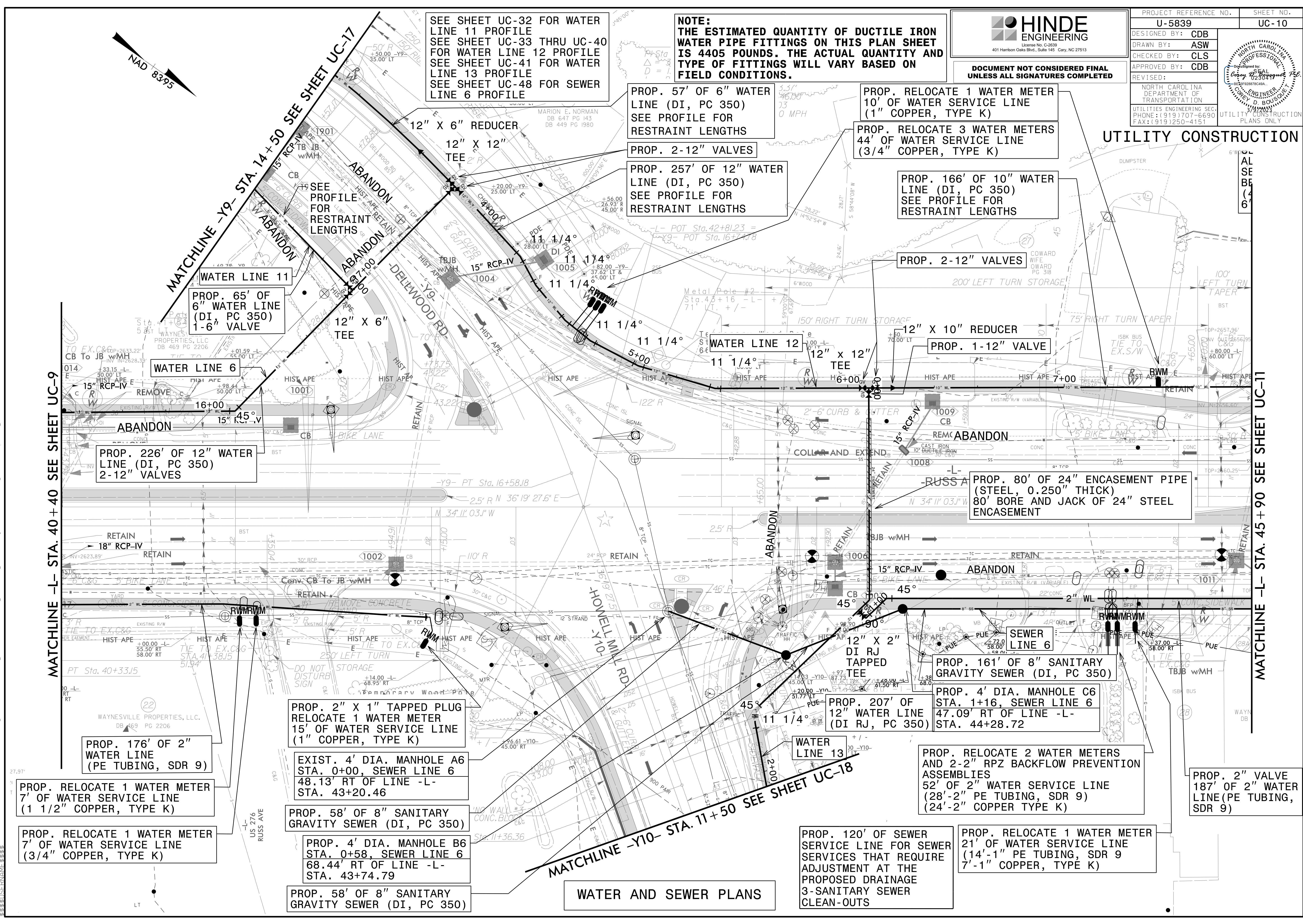
NOTE:
THE ESTIMATED QUANTITY OF DUCTILE IRON WATER PIPE FITTINGS ON THIS PLAN SHEET IS 4405 POUNDS. THE ACTUAL QUANTITY AND TYPE OF FITTINGS WILL VARY BASED ON FIELD CONDITIONS.

HINDE ENGINEERING
License No. C-2639
401 Harrison Oaks Blvd., Suite 145 Cary, NC 27513

DOCUMENT NOT CONSIDERED FINAL UNLESS ALL SIGNATURES COMPLETED

PROJECT REFERENCE NO. U-5839	SHEET NO. UC-10
DESIGNED BY: CDB	
DRAWN BY: ASW	
CHECKED BY: CLS	
APPROVED BY: CDB	
REVISED:	
NORTH CAROLINA DEPARTMENT OF TRANSPORTATION	
UTILITIES ENGINEERING SEC. PHONE: (919) 707-6690 FAX: (919) 250-4151	
UTILITY CONSTRUCTION PLANS ONLY	

UTILITY CONSTRUCTION



MATCHLINE -L- STA. 40 + 40 SEE SHEET UC-9

MATCHLINE -Y9- STA. 14 + 50 SEE SHEET UC-17

MATCHLINE -Y10- STA. 11 + 50 SEE SHEET UC-18

MATCHLINE -L- STA. 45 + 90 SEE SHEET UC-11

WATER AND SEWER PLANS

PROP. RELOCATE 1 WATER METER
7' OF WATER SERVICE LINE
(1 1/2" COPPER, TYPE K)

PROP. RELOCATE 1 WATER METER
7' OF WATER SERVICE LINE
(3/4" COPPER, TYPE K)

PROP. 176' OF 2" WATER LINE
(PE TUBING, SDR 9)

PROP. 2" X 1" TAPPED PLUG
RELOCATE 1 WATER METER
15' OF WATER SERVICE LINE
(1" COPPER, TYPE K)

EXIST. 4' DIA. MANHOLE A6
STA. 0+00, SEWER LINE 6
48.13' RT OF LINE -L-
STA. 43+20.46

PROP. 58' OF 8" SANITARY
GRAVITY SEWER (DI, PC 350)

PROP. 4' DIA. MANHOLE B6
STA. 0+58, SEWER LINE 6
68.44' RT OF LINE -L-
STA. 43+74.79

PROP. 58' OF 8" SANITARY
GRAVITY SEWER (DI, PC 350)

PROP. 57' OF 6" WATER
LINE (DI, PC 350)
SEE PROFILE FOR
RESTRAINT LENGTHS

PROP. 257' OF 12" WATER
LINE (DI, PC 350)
SEE PROFILE FOR
RESTRAINT LENGTHS

PROP. RELOCATE 1 WATER METER
10' OF WATER SERVICE LINE
(1" COPPER, TYPE K)

PROP. RELOCATE 3 WATER METERS
44' OF WATER SERVICE LINE
(3/4" COPPER, TYPE K)

PROP. 166' OF 10" WATER
LINE (DI, PC 350)
SEE PROFILE FOR
RESTRAINT LENGTHS

PROP. 2-12" VALVES

WATER LINE 12
11 1/4" TEE

12" X 10" REDUCER
PROP. 1-12" VALVE

PROP. 80' OF 24" ENCASEMENT PIPE
(STEEL, 0.250" THICK)
80" BORE AND JACK OF 24" STEEL
ENCASEMENT

PROP. 161' OF 8" SANITARY
GRAVITY SEWER (DI, PC 350)

PROP. 4' DIA. MANHOLE C6
STA. 1+16, SEWER LINE 6
47.09' RT OF LINE -L-
STA. 44+28.72

PROP. RELOCATE 2 WATER METERS
AND 2-2" RPZ BACKFLOW PREVENTION
ASSEMBLIES
52' OF 2" WATER SERVICE LINE
(28'-2" PE TUBING, SDR 9)
(24'-2" COPPER TYPE K)

PROP. 2" VALVE
187' OF 2" WATER
LINE (PE TUBING,
SDR 9)

PROP. 120' OF SEWER
SERVICE LINE FOR SEWER
SERVICES THAT REQUIRE
ADJUSTMENT AT THE
PROPOSED DRAINAGE
3-SANITARY SEWER
CLEAN-OUTS

PROP. RELOCATE 1 WATER METER
21' OF WATER SERVICE LINE
(14'-1" PE TUBING, SDR 9)
7'-1" COPPER, TYPE K)

U:\5839\Design\Utilities\Engineering\UC-Proj\U5839_Ut_rdy10_UC10_psh.dgn