

WATER AND SEWER PLANS

SEE SHEET UC-26 THRU UC-29 FOR WATER LINE 6 PROFILE
 SEE SHEET UC-31 FOR WATER LINE 9 PROFILE
 SEE SHEET UC-32 FOR WATER LINE 10 PROFILE
 SEE SHEET UC-46 FOR SEWER LINE 5 PROFILE

PROP. RELOCATE 2 WATER METERS
 5' OF WATER SERVICE LINE (3/4" COPPER, TYPE K)
 5' OF 2" WATER SERVICE LINE (2" COPPER, TYPE K)

PROP. RELOCATE 1 WATER METER
 4' OF WATER SERVICE LINE (1" COPPER, TYPE K)

PROP. 549' OF 12" WATER LINE (DI RJ, PC 350)

PROP. 1-12" VALVE

PROP. 20' OF 8" SANITARY GRAVITY SEWER (DI, PC 350)
 2-8" FLEXIBLE COUPLINGS

ABANDON 1 UTILITY MANHOLE
 ABANDON 244'-8" UTILITY PIPE AT SEWER LINE 5

MATCHLINE -L- STA. 35+00 SEE SHEET UC-8

MATCHLINE -L- STA. 40+40 SEE SHEET UC-10

PROP. 71' OF 12" ENCASEMENT PIPE (STEEL, 0.188" THICK)
 71' BORE AND JACK OF 12" STEEL ENCASEMENT

PROP. RECONNECT 1 WATER METER
 96' OF WATER SERVICE LINE (3/4" COPPER, TYPE K)
 DETERMINE IN THE FIELD IF THIS METER WILL NEED TO BE RECONNECTED

PROP. 4' DIA. MANHOLE C5
 STA. 2+41, SEWER LINE 5
 53.31' RT OF LINE -L- STA. 36+94.27

PROP. RELOCATE FIRE HYDRANT
 1-6" VALVE
 8' OF FIRE HYDRANT LEG (DI RJ, PC 350)

PROP. 108' OF 6" WATER LINE (DI RJ, PC 350)
 1-6" VALVE

PROP. 203' OF 12" SANITARY GRAVITY SEWER (DI, PC 350)

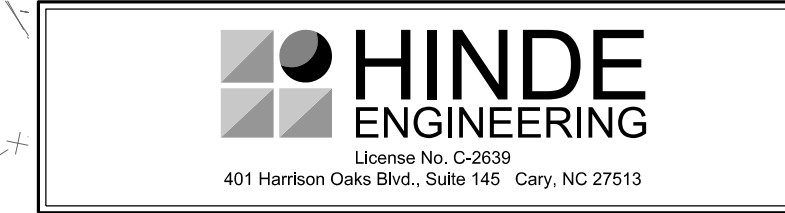
PROP. 38' OF 12" SANITARY GRAVITY SEWER (DI, PC 350)

PROP. 4' DIA. MANHOLE B5
 STA. 0+38, SEWER LINE 5
 27.12' LT OF LINE -Y8- STA. 10+40.55

PROP. 4' DIA. MANHOLE A5
 STA. 0+00, SEWER LINE 5
 11.92' LT OF LINE -Y8- STA. 10+75.38

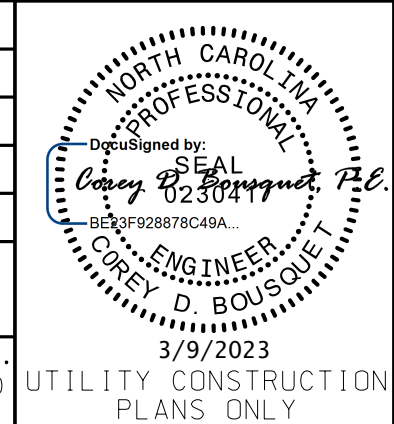
PROP. RELOCATE 1 WATER METER
 6' OF WATER SERVICE LINE (3/4" COPPER, TYPE K)

NOTE:
 THE ESTIMATED QUANTITY OF DUCTILE IRON WATER PIPE FITTINGS ON THIS PLAN SHEET IS 3685 POUNDS. THE ACTUAL QUANTITY AND TYPE OF FITTINGS WILL VARY BASED ON FIELD CONDITIONS.



DOCUMENT NOT CONSIDERED FINAL UNLESS ALL SIGNATURES COMPLETED

PROJECT REFERENCE NO.	UC-9
DESIGNED BY:	CDB
DRAWN BY:	ASW
CHECKED BY:	CLS
APPROVED BY:	CDB
REVISED:	
NORTH CAROLINA DEPARTMENT OF TRANSPORTATION	
UTILITIES ENGINEERING SEC. PHONE: (919) 707-6690 FAX: (919) 250-4151	
UTILITY CONSTRUCTION PLANS ONLY	



UTILITY CONSTRUCTION

29-MAR-2023 15:27 PROJECTS\2015\A2015803\00_Mulkey - U-5839\Design\Utilities\Engineering\UC-Proj\U5839_Ut_rdy9_UC-9_psh.dgn
 3:33 PM