

REMOVE EXIST. 12" WATER LINE INSIDE RR R/W THAT WILL BE ABANDONED AFTER THE PROPOSED WATER LINE IS INSTALLED

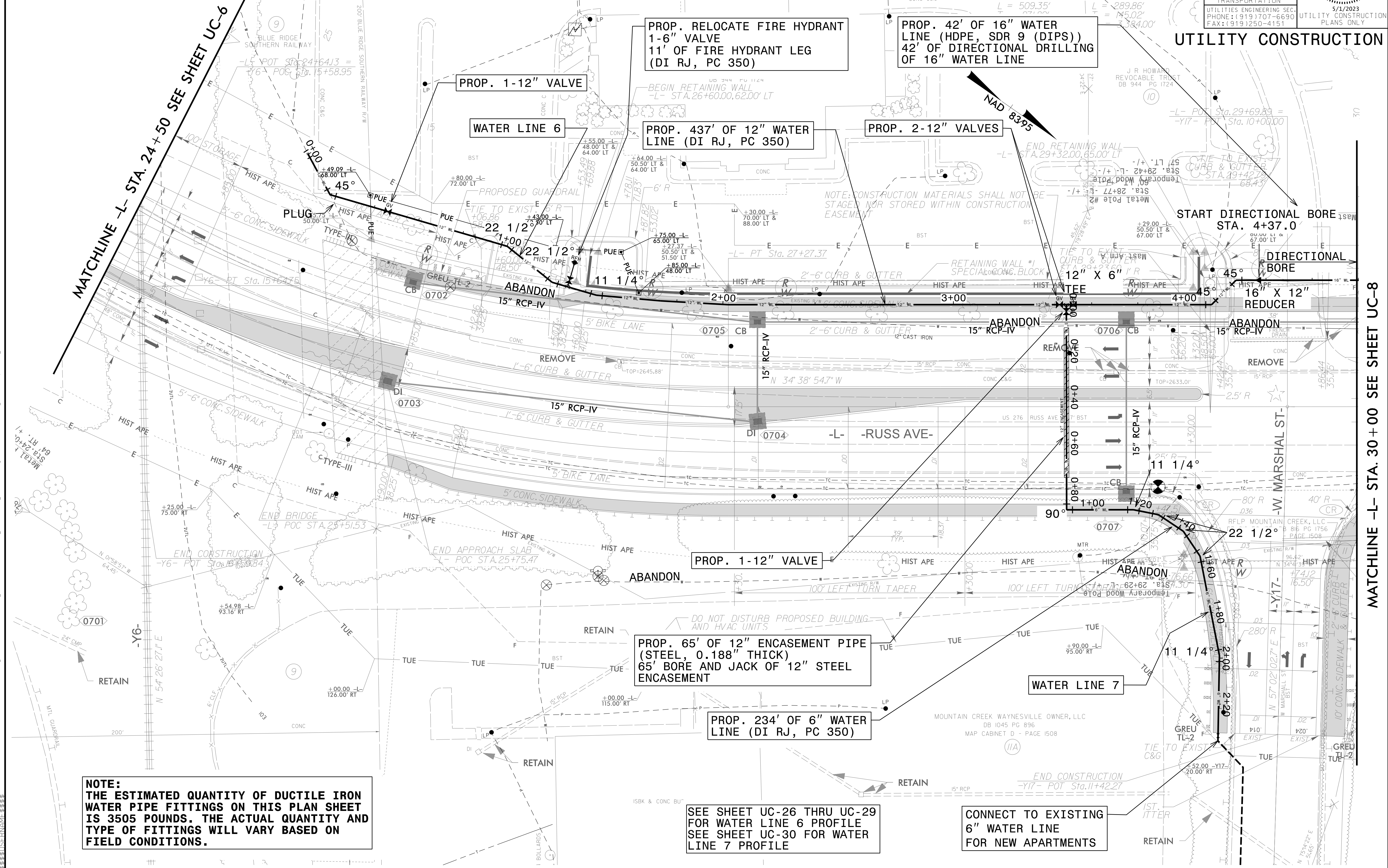
WATER AND SEWER PLANS

HINDE ENGINEERING
 License No. C-2639
 401 Harrison Oaks Blvd., Suite 145 Cary, NC 27513

DOCUMENT NOT CONSIDERED FINAL UNLESS ALL SIGNATURES COMPLETED

PROJECT REFERENCE NO.	U-5839	SHEET NO.	UC-7
DESIGNED BY:	CDB		
DRAWN BY:	ASW		
CHECKED BY:	CLS		
APPROVED BY:	CDB		
REVISED:		NORTH CAROLINA DEPARTMENT OF TRANSPORTATION	
UTILITIES ENGINEERING SEC. PHONE: (919) 707-6690 FAX: (919) 250-4151		UTILITY CONSTRUCTION PLANS ONLY	

UTILITY CONSTRUCTION



MATCHLINE -L- STA. 24+50 SEE SHEET UC-6

MATCHLINE -L- STA. 30+00 SEE SHEET UC-8

NOTE: THE ESTIMATED QUANTITY OF DUCTILE IRON WATER PIPE FITTINGS ON THIS PLAN SHEET IS 3505 POUNDS. THE ACTUAL QUANTITY AND TYPE OF FITTINGS WILL VARY BASED ON FIELD CONDITIONS.

PROP. 65' OF 12" ENCASEMENT PIPE (STEEL, 0.188" THICK) 65' BORE AND JACK OF 12" STEEL ENCASEMENT

PROP. 234' OF 6" WATER LINE (DI RJ, PC 350)

SEE SHEET UC-26 THRU UC-29 FOR WATER LINE 6 PROFILE SEE SHEET UC-30 FOR WATER LINE 7 PROFILE

CONNECT TO EXISTING 6" WATER LINE FOR NEW APARTMENTS

01 MAY 2023 08:06 PROJECTS\2015\A2015803\00 Mulkey - U-5839\Utilities\Engineering\UC-Proj\U5839_Ut_rdy7_UC7_psh.dgn