

WATER AND SEWER PLANS

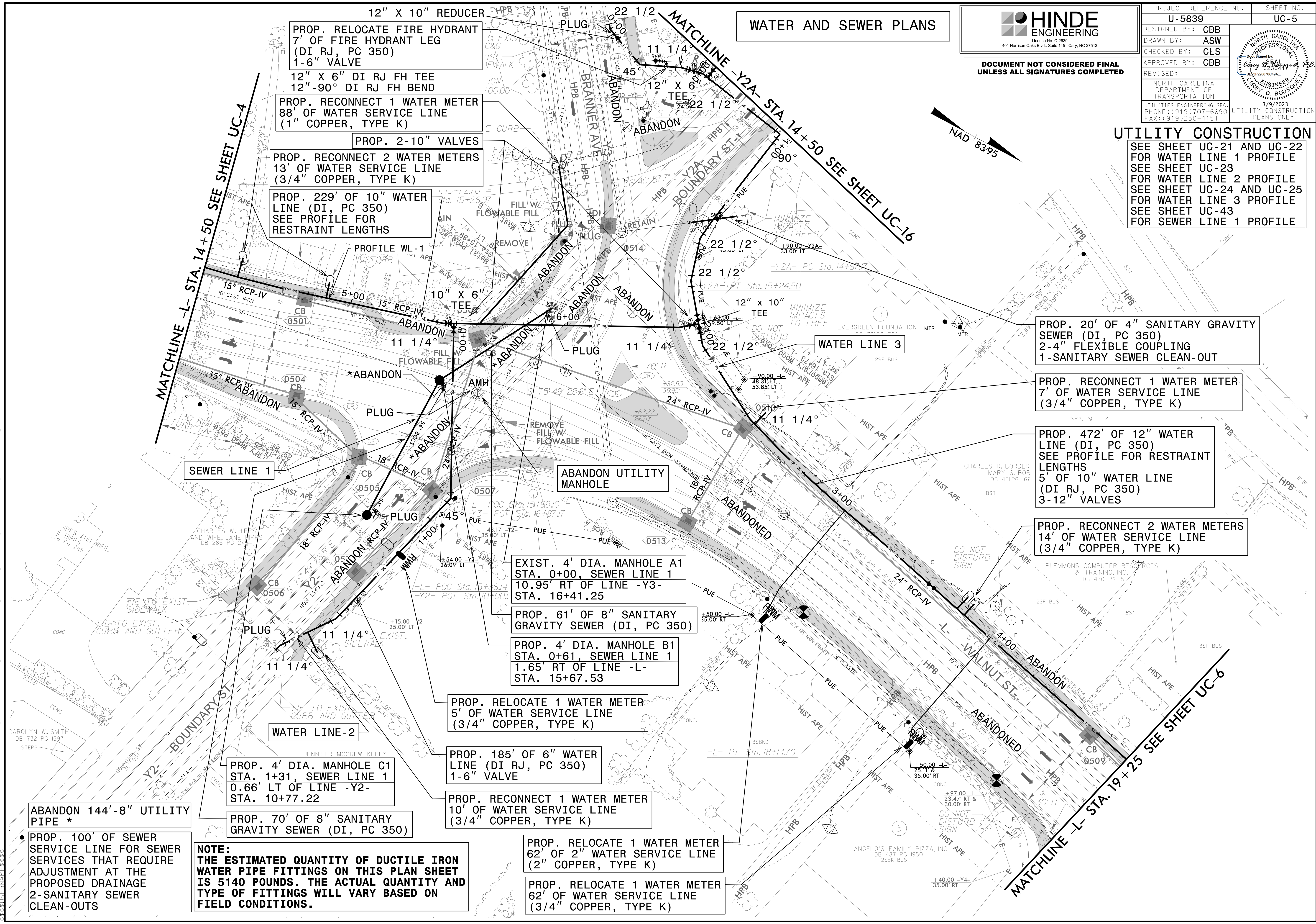
HINDE ENGINEERING
 License No. C-2639
 401 Harrison Oaks Blvd., Suite 145 Cary, NC 27513

**DOCUMENT NOT CONSIDERED FINAL
 UNLESS ALL SIGNATURES COMPLETED**

PROJECT REFERENCE NO.	SHEET NO.
U-5839	UC-5
DESIGNED BY: CDB	
DRAWN BY: ASW	
CHECKED BY: CLS	
APPROVED BY: CDB	
REVISED:	
NORTH CAROLINA DEPARTMENT OF TRANSPORTATION UTILITIES ENGINEERING SEC. PHONE: (919) 707-6690 FAX: (919) 250-4151	
3/9/2023 UTILITY CONSTRUCTION PLANS ONLY	

UTILITY CONSTRUCTION

SEE SHEET UC-21 AND UC-22 FOR WATER LINE 1 PROFILE
 SEE SHEET UC-23 FOR WATER LINE 2 PROFILE
 SEE SHEET UC-24 AND UC-25 FOR WATER LINE 3 PROFILE
 SEE SHEET UC-43 FOR SEWER LINE 1 PROFILE



12" X 10" REDUCER
 PROP. RELOCATE FIRE HYDRANT 7' OF FIRE HYDRANT LEG (DI RJ, PC 350)
 1-6" VALVE

12" X 6" DI RJ FH TEE
 12"-90° DI RJ FH BEND
 PROP. RECONNECT 1 WATER METER 88' OF WATER SERVICE LINE (1" COPPER, TYPE K)

PROP. 2-10" VALVES

PROP. RECONNECT 2 WATER METERS 13' OF WATER SERVICE LINE (3/4" COPPER, TYPE K)

PROP. 229' OF 10" WATER LINE (DI, PC 350)
 SEE PROFILE FOR RESTRAINT LENGTHS

PROP. 20' OF 4" SANITARY GRAVITY SEWER (DI, PC 350)
 2-4" FLEXIBLE COUPLING
 1-SANITARY SEWER CLEAN-OUT

PROP. RECONNECT 1 WATER METER 7' OF WATER SERVICE LINE (3/4" COPPER, TYPE K)

PROP. 472' OF 12" WATER LINE (DI, PC 350)
 SEE PROFILE FOR RESTRAINT LENGTHS
 5' OF 10" WATER LINE (DI RJ, PC 350)
 3-12" VALVES

PROP. RECONNECT 2 WATER METERS 14' OF WATER SERVICE LINE (3/4" COPPER, TYPE K)

EXIST. 4' DIA. MANHOLE A1 STA. 0+00, SEWER LINE 1
 10.95' RT OF LINE -Y3- STA. 16+41.25

PROP. 61' OF 8" SANITARY GRAVITY SEWER (DI, PC 350)

PROP. 4' DIA. MANHOLE B1 STA. 0+61, SEWER LINE 1
 1.65' RT OF LINE -L- STA. 15+67.53

PROP. RELOCATE 1 WATER METER 5' OF WATER SERVICE LINE (3/4" COPPER, TYPE K)

PROP. 185' OF 6" WATER LINE (DI RJ, PC 350)
 1-6" VALVE

PROP. RECONNECT 1 WATER METER 10' OF WATER SERVICE LINE (3/4" COPPER, TYPE K)

PROP. RELOCATE 1 WATER METER 62' OF 2" WATER SERVICE LINE (2" COPPER, TYPE K)

PROP. RELOCATE 1 WATER METER 62' OF WATER SERVICE LINE (3/4" COPPER, TYPE K)

NOTE:
 THE ESTIMATED QUANTITY OF DUCTILE IRON WATER PIPE FITTINGS ON THIS PLAN SHEET IS 5140 POUNDS. THE ACTUAL QUANTITY AND TYPE OF FITTINGS WILL VARY BASED ON FIELD CONDITIONS.

ABANDON 144'-8" UTILITY PIPE *
 PROP. 100' OF SEWER SERVICE LINE FOR SEWER SERVICES THAT REQUIRE ADJUSTMENT AT THE PROPOSED DRAINAGE
 2-SANITARY SEWER CLEAN-OUTS

20-MAR-2023 15:22 PROJECTS\2015\AZ2015803.00 Mulkey - U-5839\Utilities\Engineering\UC-Proj\U5839_Ut_rdy5_UC5_psh.dgn