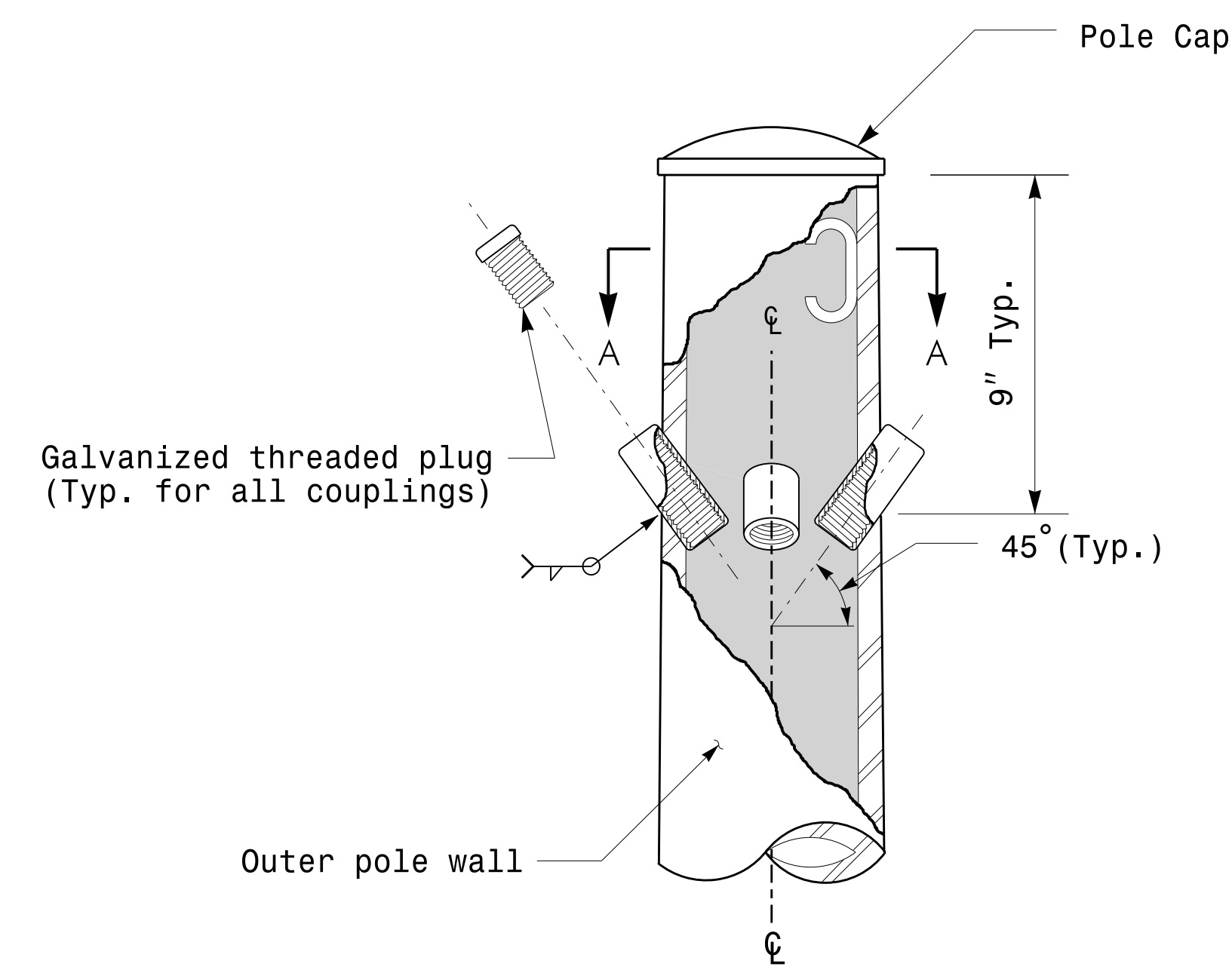
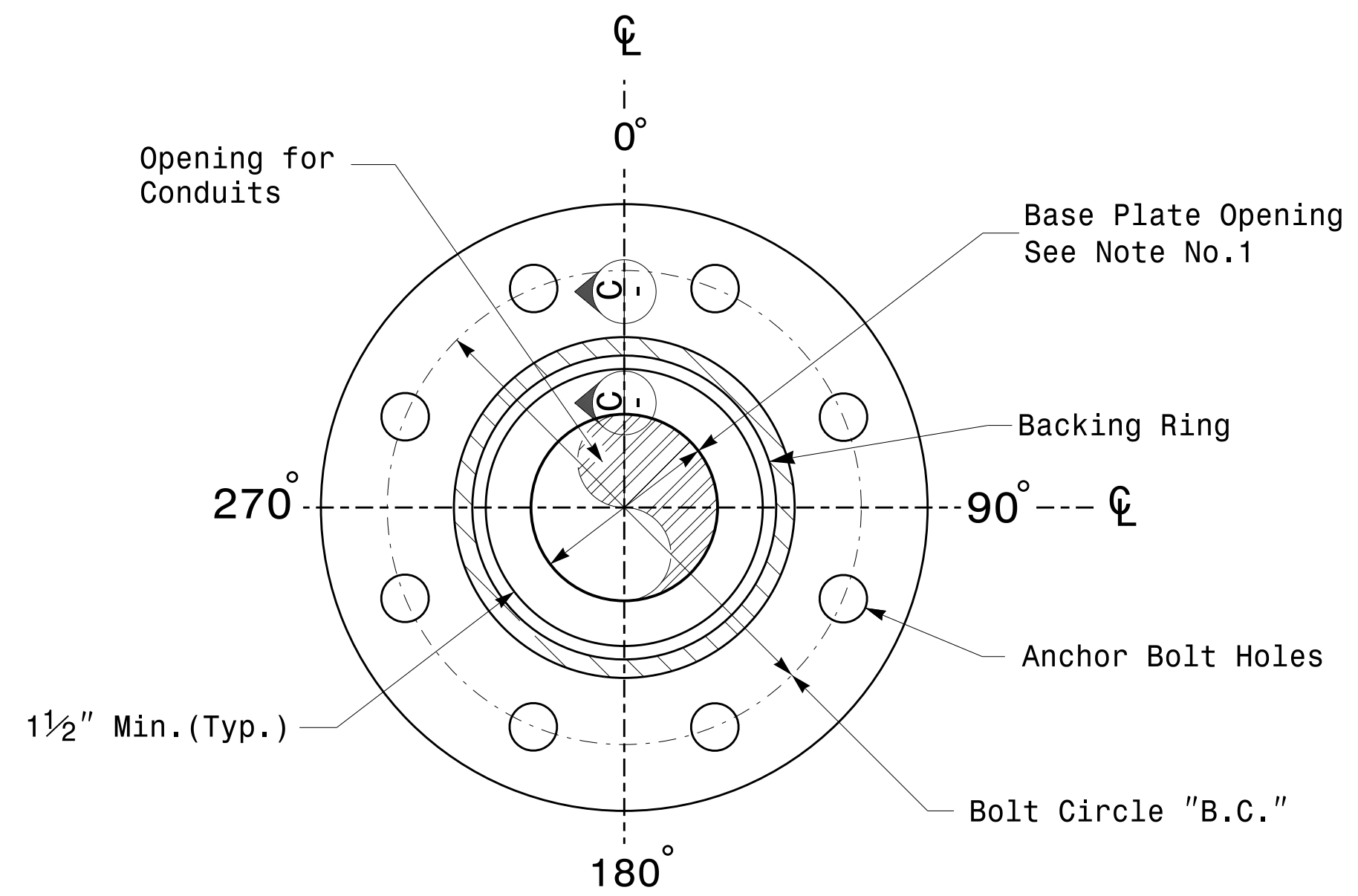


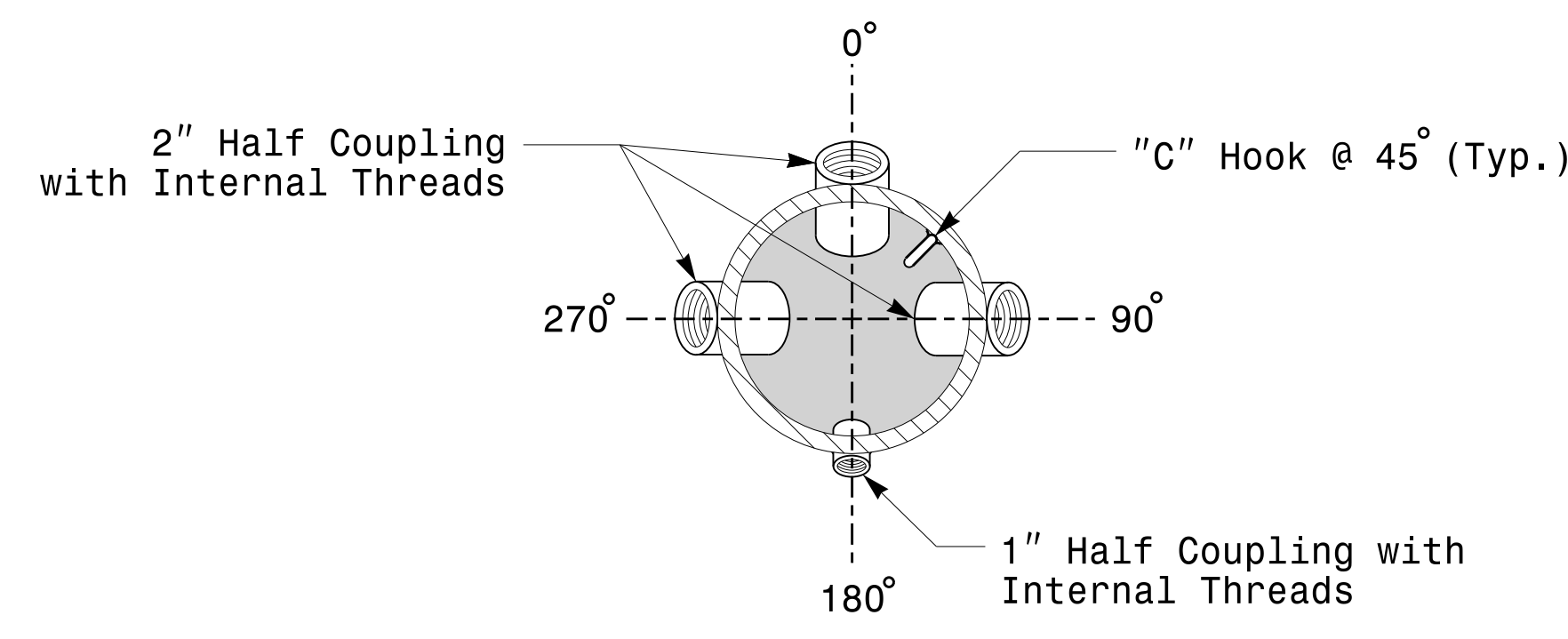
Note:  
 1. Opening in pole base plate shall be equal to pole base inside diameter minus 3 1/2" but shall not be less than 8 1/2".



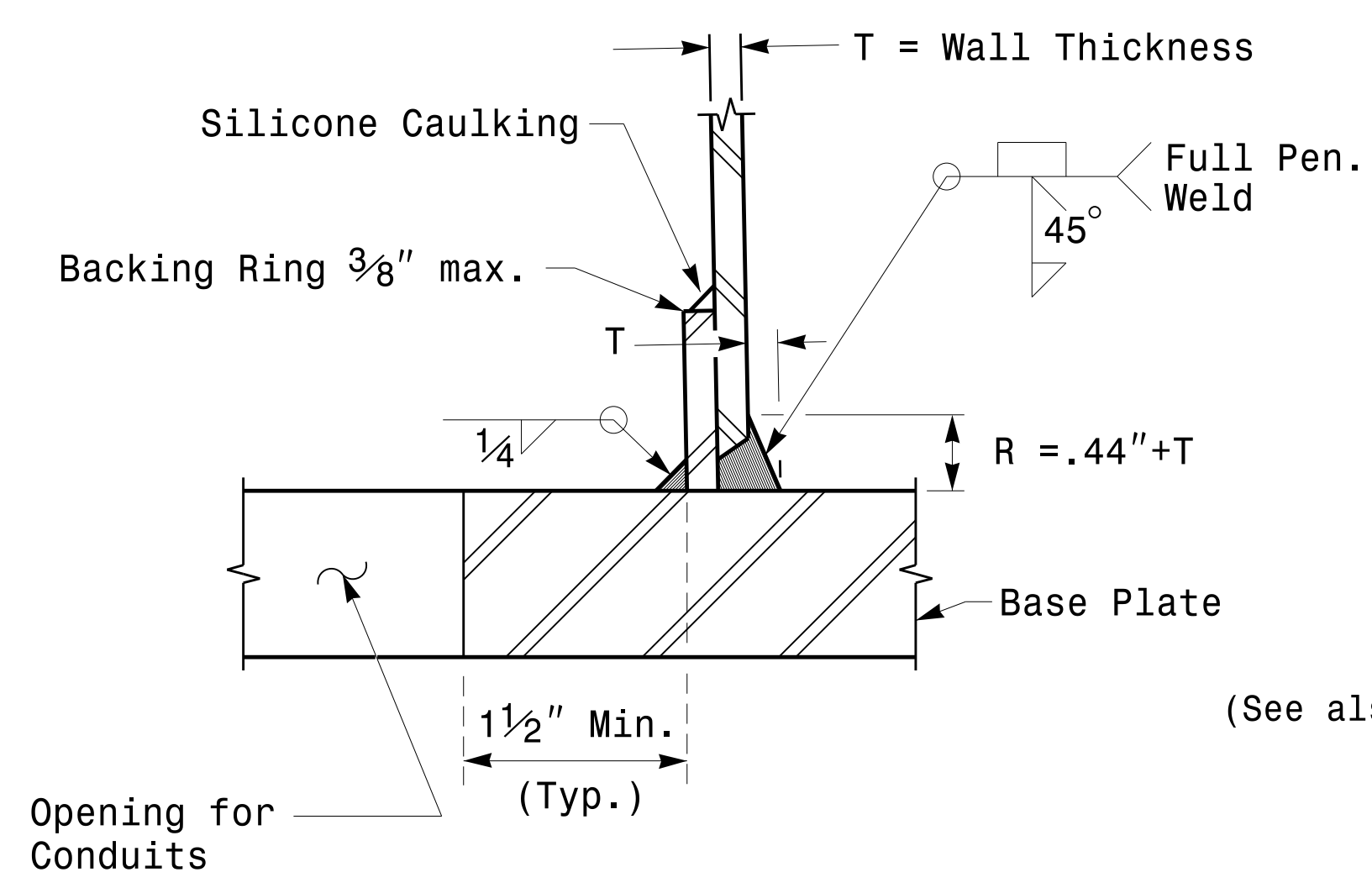
Cable Entrances at Top of Pole



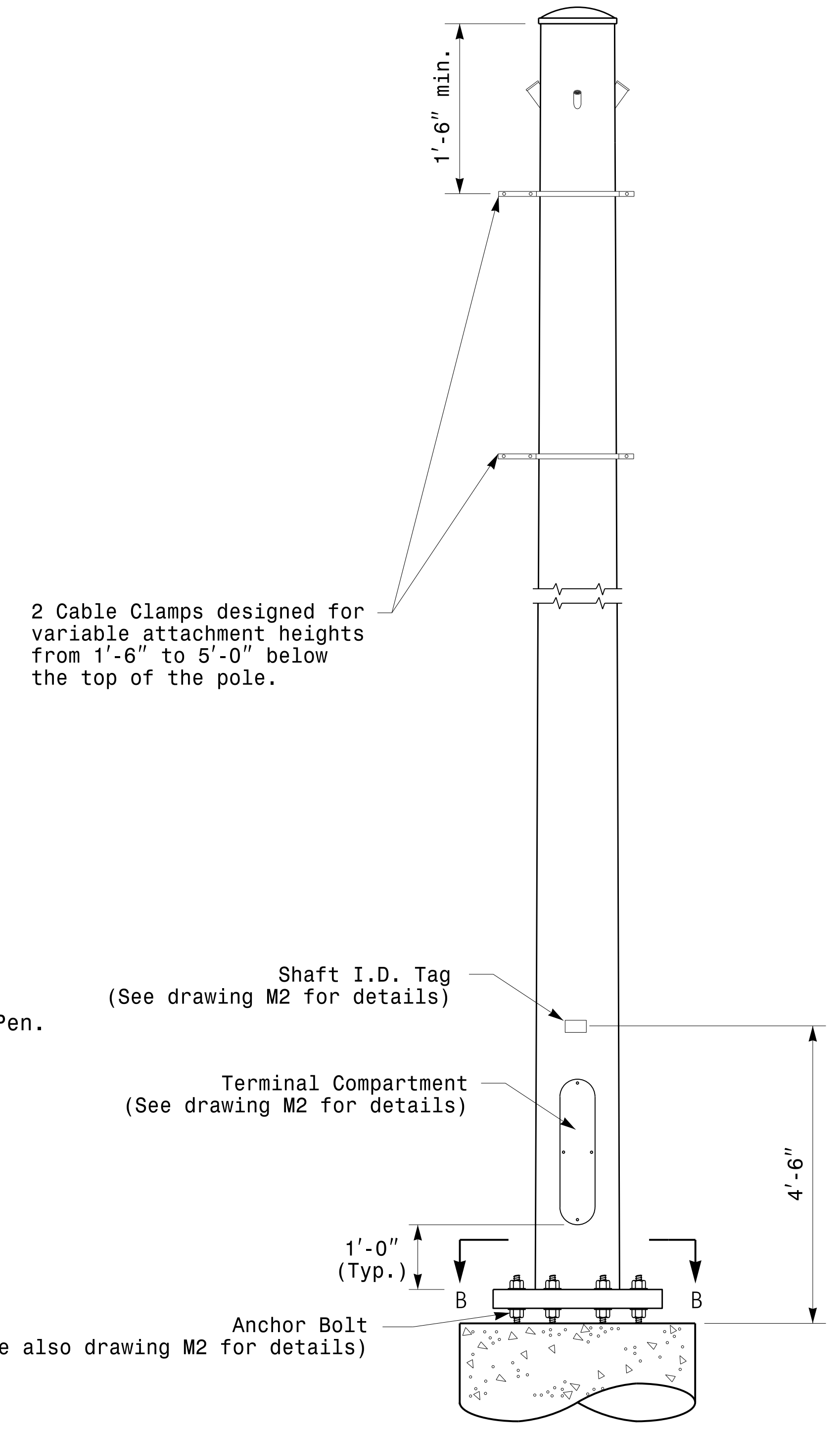
Section B-B  
Pole Base Plate Details  
(8 and 12 Bolt Pattern)



Section A-A  
Radial Orientation for Factory Installed  
Accessories at Top of Pole



Section C-C  
(Pole Attachment to Base Plate)  
Full-Penetration  
Groove Weld Detail



Monotube Strain Pole

Prepared in the Offices of:  750 N. Greenleaf Hwy, Garner, NC 27529	Typical Fabrication Details For Strain Poles		SEAL  DocuSigned by: Debesh C. Sarkar 44EB87816FA74F9E
	PLAN DATE: OCTOBER 2017 PREPARED BY: N. BITTING	DESIGNED BY: K.C. DURIGON REVIEWED BY: D.C. SARKAR	

11-001-2017-08225  
 1365604115 Signal&Svcs:gnrc Design Section:Eastern Region:Sheet:2016:2014 Sig.M3 Std. Fabrication Details:Strain Poles.dgn  
 11/11/2017

**Fabrication Details – Strain Poles**