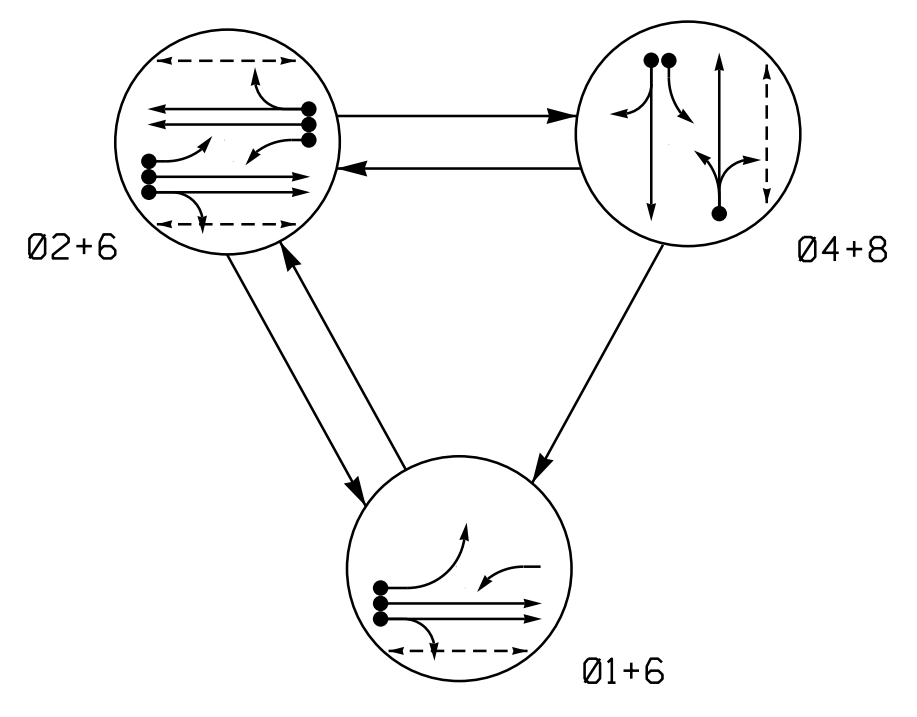
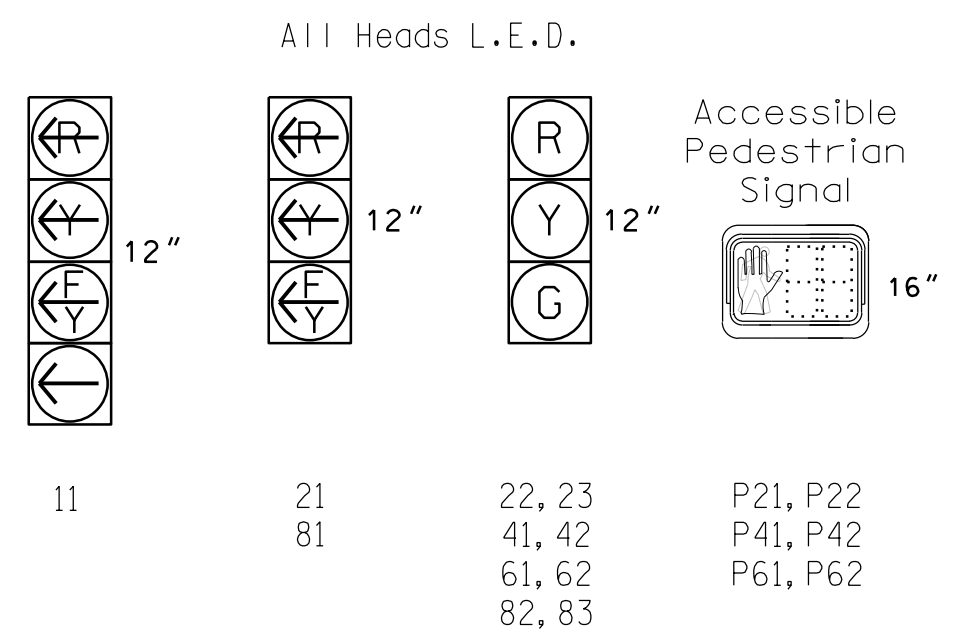


**PHASING DIAGRAM**



SIGNAL FACE	PHASE			
	01+6	02+6	04+8	FLASH
11	←	→	↔	↔
21	←	→	↔	↔
22, 23	R	G	R	Y
41, 42	R	R	G	R
61, 62	G	G	R	Y
81	←	→	↔	↔
82, 83	R	R	G	R
P21, P22	DW	W	DW	DRK
P41, P42	DW	DW	W	DRK
P61, P62	W	W	DW	DRK

**SIGNAL FACE I.D.**

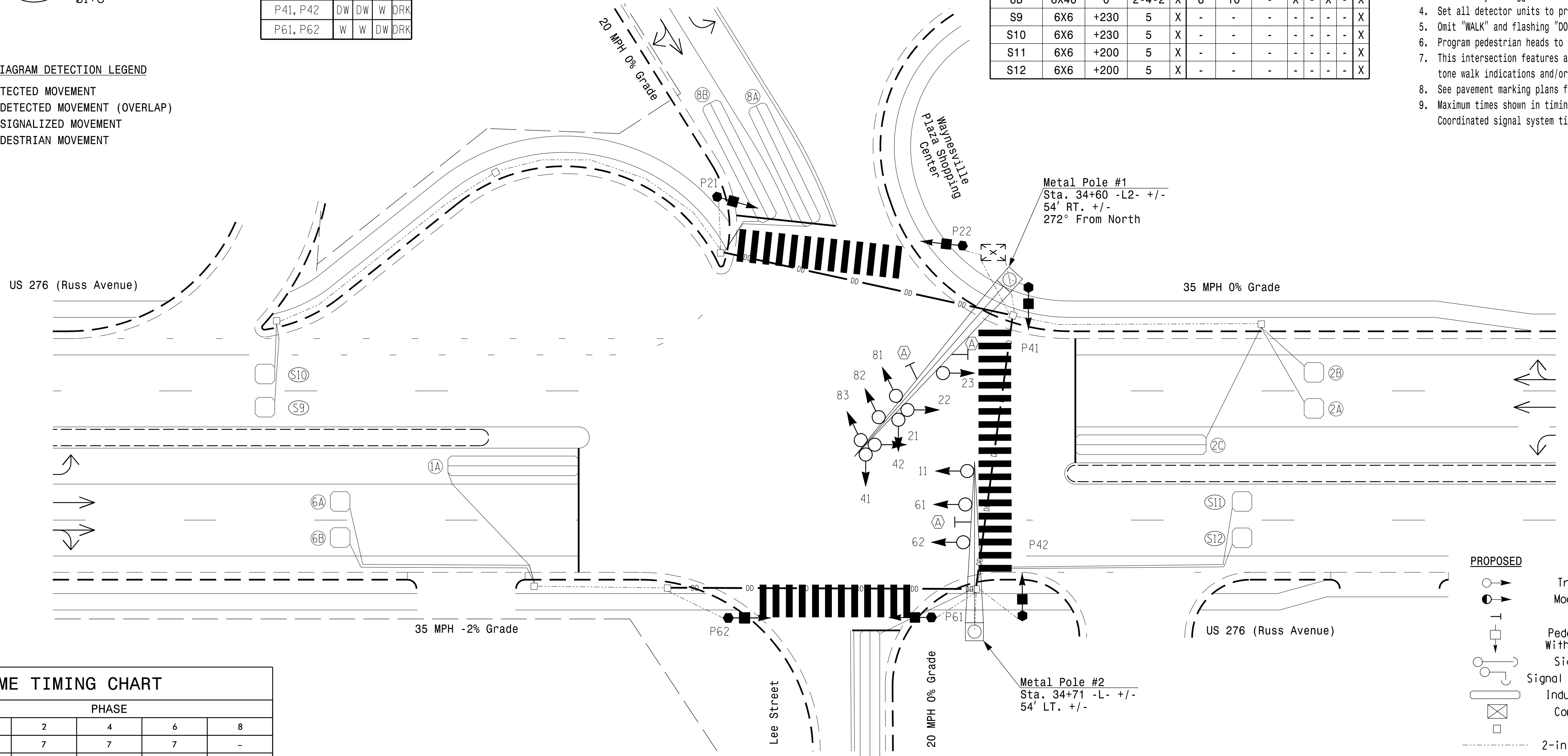
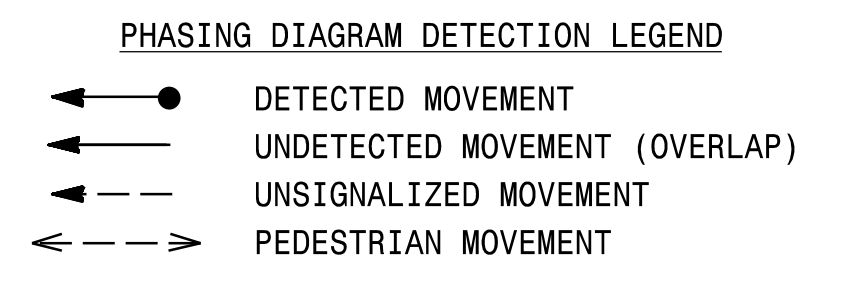


MAXTIME DETECTOR INSTALLATION CHART											
DETECTOR					PROGRAMMING						
LOOP	SIZE (FT)	DISTANCE FROM STOPBAR (FT)	TURNS	NEW LOOP	CALL PHASE	DELAY TIME	EXTEND TIME	EXTEND	ADDED INITIAL	CALL	NEW CARD
1A	6X40	0	2-4-2	X	1	15	-	X	-	X	X
2A	6X6	70	5	X	2	-	-	X	-	X	X
2B	6X6	70	5	X	2	-	-	X	-	X	X
2C	6X40	0	2-4-2	X	2	-	-	X	-	X	X
4A	6X40	0	2-4-2	X	4	10	-	X	-	X	X
6A	6X6	70	5	X	6	-	-	X	-	X	X
6B	6X6	70	5	X	6	-	-	X	-	X	X
8A	6X40	0	2-4-2	X	8	3	-	X	-	X	X
8B	6X40	0	2-4-2	X	8	10	-	X	-	X	X
S9	6X6	+230	5	X	-	-	-	-	-	-	X
S10	6X6	+230	5	X	-	-	-	-	-	-	X
S11	6X6	+200	5	X	-	-	-	-	-	-	X
S12	6X6	+200	5	X	-	-	-	-	-	-	X

**3 Phase Fully Actuated D14-12\_Waynesville**

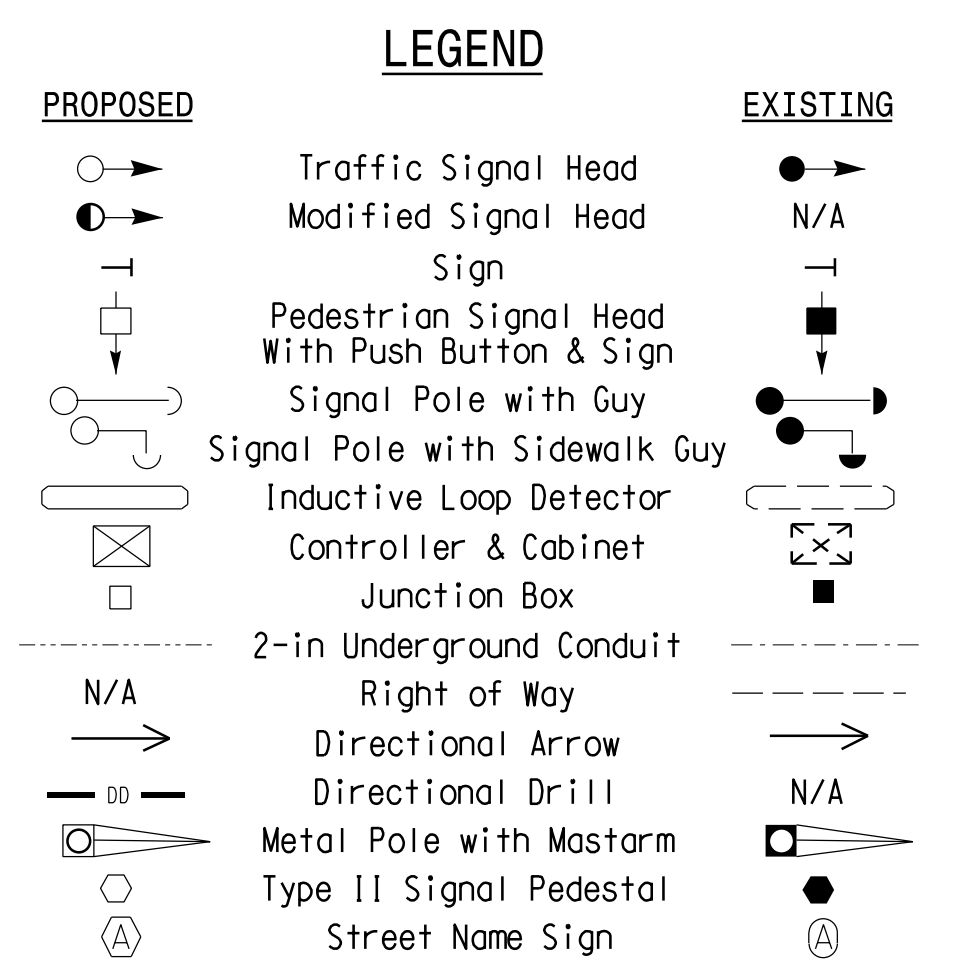
**NOTES**

- Refer to "Roadway Standard Drawings NCDOT" dated January 2018 and "Standard Specifications for Roads and Structures" dated January 2018.
- Do not program signal for late night flashing operation unless otherwise directed by the Engineer.
- Phase 1 may be lagged.
- Set all detector units to presence mode.
- Omit "WALK" and flashing "DON'T WALK" with no pedestrian calls.
- Program pedestrian heads to countdown the flashing "Don't Walk" time only.
- This intersection features accessible pedestrian signals utilizing percussive tone walk indications and/or speech messages.
- See pavement marking plans for stop bar and crosswalk locations.
- Maximum times shown in timing chart are for free-run operation only. Coordinated signal system timing values supersede these values.



FEATURE	PHASE				
	1	2	4	6	8
Walk *	-	7	7	7	-
Ped Clear *	-	12	19	11	-
Min Green	7	10	7	10	7
Passage *	2.0	3.0	3.0	3.0	2.0
Max 1 *	15	45	20	45	20
Yellow Change	3.0	4.0	3.0	4.0	3.0
Red Clear	3.4	2.5	3.4	2.5	3.5
Added Initial *	-	-	-	-	-
Maximum Initial *	-	-	-	-	-
Time Before Reduction *	-	-	-	-	-
Time To Reduce *	-	-	-	-	-
Minimum Gap	-	-	-	-	-
Advance Walk	-	-	-	-	-
Non Lock Detector	X	-	X	-	X
Vehicle Recall	-	MIN RECALL	-	MIN RECALL	-
Dual Entry	-	-	X	-	X

ACCESSIBLE PEDESTRIAN SIGNAL OPERATION			
SIGNAL FACE	VOICE TONES	INTERVAL	SPEECH MESSAGE
P21	- X	Walk	(Percussive Tone)
X	-	Flashing Don't Walk / Don't Walk	Wait. Wait to cross Waynesville Plaza.
P22	- X	Walk	(Percussive Tone)
X	-	Flashing Don't Walk / Don't Walk	Wait. Wait to cross Waynesville Plaza.
P41	- X	Walk	(Percussive Tone)
X	-	Flashing Don't Walk / Don't Walk	Wait. Wait to cross Russ.
P42	- X	Walk	(Percussive Tone)
X	-	Flashing Don't Walk / Don't Walk	Wait. Wait to cross Russ.
P61	- X	Walk	(Percussive Tone)
X	-	Flashing Don't Walk / Don't Walk	Wait. Wait to cross Lee.
P62	- X	Walk	(Percussive Tone)
X	-	Flashing Don't Walk / Don't Walk	Wait. Wait to cross Lee.



**Signal Upgrade - Final Design**

	<p>US 276 (Russ Avenue) at Shopping Center Entrance/ Lee Street</p>		<p>Division 14 Haywood County Waynesville</p>
	<p>PLAN DATE: April 2023</p>	<p>REVIEWED BY: WJ Hamilton</p>	
<p>PREPARED BY: TS Popelka</p>	<p>RKA PROJ. NO.: 16085 (040)</p>	<p>SIGNATURE: William J. Hamilton</p>	<p>DATE: 04/11/2023</p>
<p>REVISIONS</p>	<p>INIT.</p>	<p>DATE</p>	<p>SIG. INVENTORY NO. 14-0587</p>

Infrastructure Consulting Services, Inc.

8210 University Executive Park Drive Suite 220 Charlotte, North Carolina 28226  
Phone: 704-549-4260 | www.rameykemp.com | NC License No. F-1489

4/12/2023  
 User: jwincd  
 40587.rsig.dsn\_2020madd.dgn

\* These values may be field adjusted. Do not adjust Min Green and Extension times for phases 2 and 6 lower than what is shown. Min Green for all other phases should not be lower than 4 seconds.