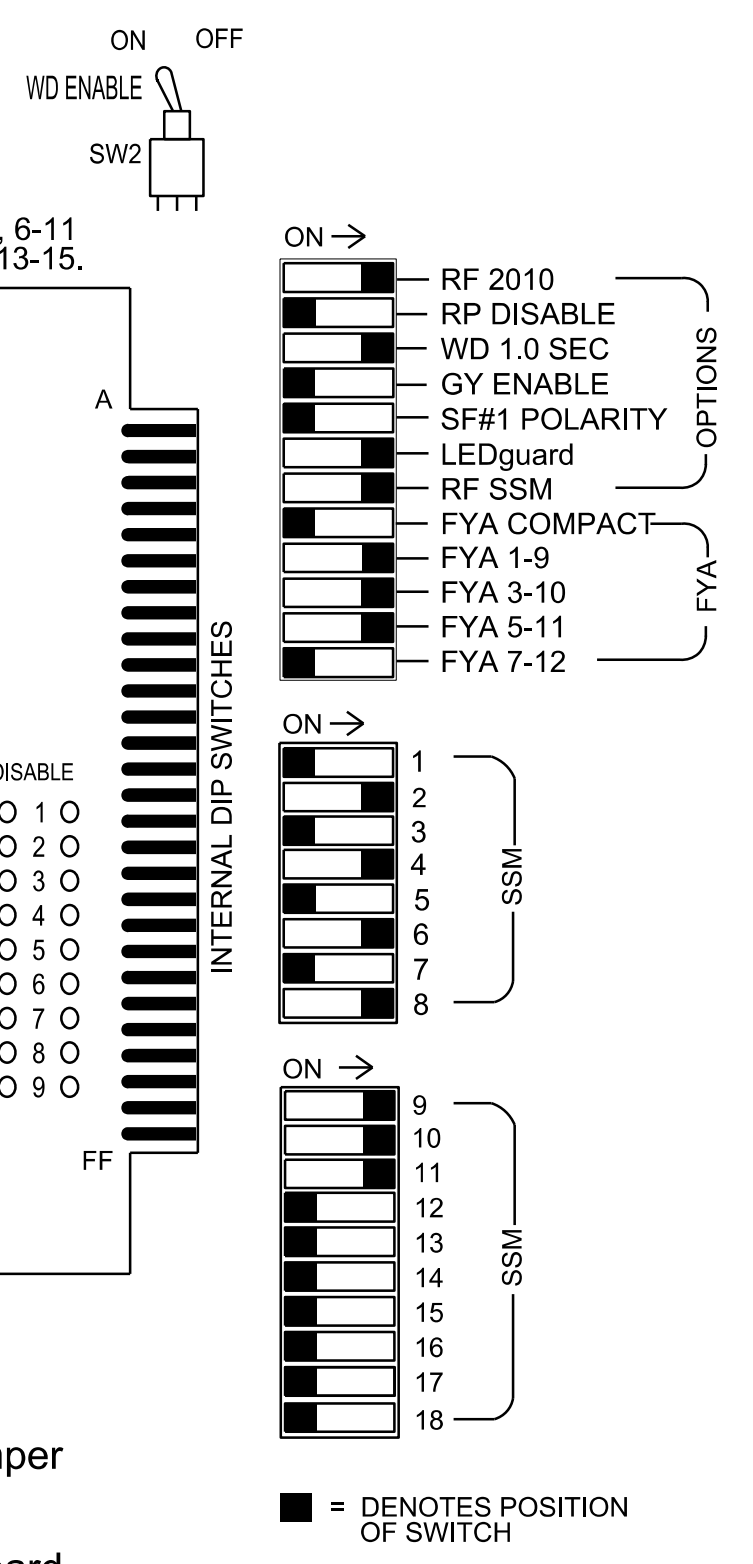
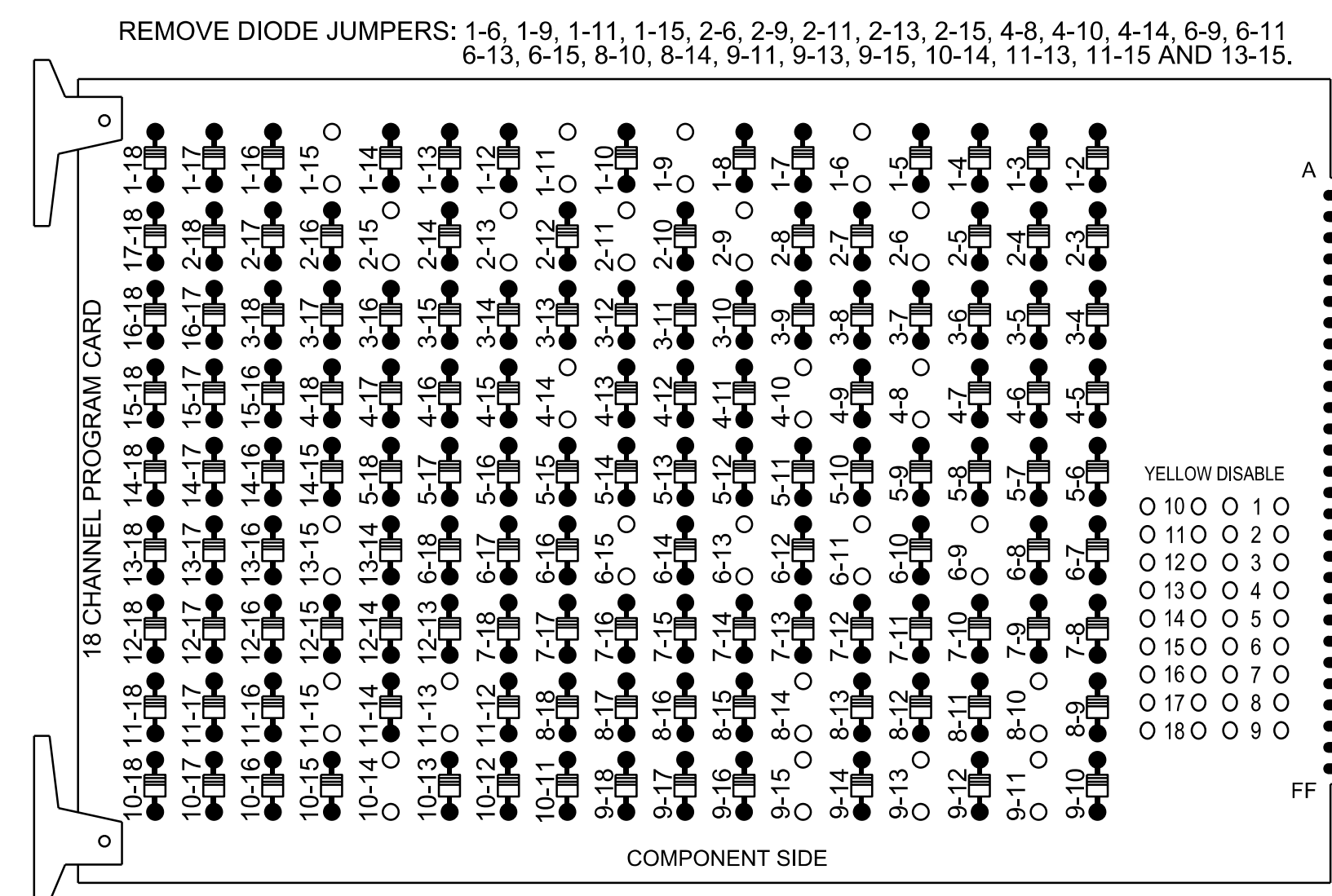


18 CHANNEL IP CONFLICT MONITOR PROGRAMMING DETAIL

(remove jumpers and set switches as shown)



- NOTES:**
- Card is provided with all diode jumpers in place. Removal of any jumper allows its channels to run concurrently.
 - Ensure jumpers SEL2-SEL5 and SEL9 are present on the monitor board.
 - Ensure that the Red Enable is active at all times during normal operation.
 - Integrate monitor with Ethernet network in cabinet.

NOTES

- To prevent "flash-conflict" problems, insert red flash program blocks for all unused vehicle load switches in the output file. The installer shall verify that signal heads flash in accordance with the signal plan.
- Program phases 4 and 8 for Dual Entry.
- Program controller to start up in phase 2 Green Walk and 6 Green Walk.
- If this signal will be managed by an ATMS software, enable controller and detector logging for all detectors used at this location.
- The cabinet and controller are part of the D14-12 Waynesville Signal System.

EQUIPMENT INFORMATION

Controller.....2070LX
 Cabinet.....332 w/ Aux
 Software.....Q-Free MAXTIME
 Cabinet Mount.....Base
 Output File Positions.....18 With Aux. Output File
 Load Switches Used.....S1, S2, S3, S5, S6, S8, S9, S11, AUX S1, AUX S2, AUX S4
 Phases Used.....1, 2, 2PED, 4, 4PED, 6, 6PED, 8
 Overlap "1".....*
 Overlap "2".....*
 Overlap "3".....*
 Overlap "4".....NOT USED

*See overlap programming detail on sheet 2

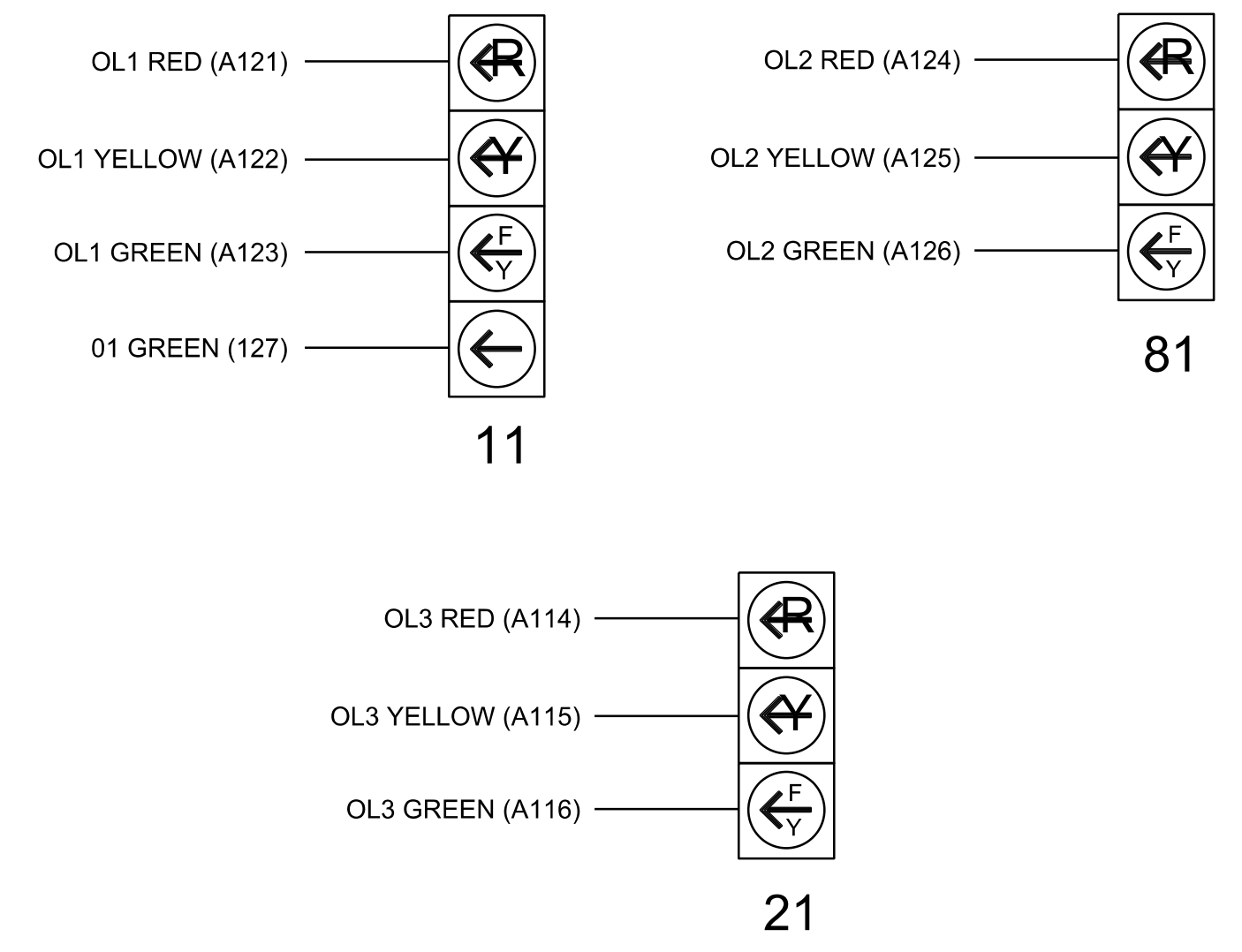
SIGNAL HEAD HOOK-UP CHART

LOAD SWITCH NO.	S1	S2	S3	S4	S5	S6	S7	S8	S9	S10	S11	S12	AUX S1	AUX S2	AUX S3	AUX S4	AUX S5	AUX S6
CMU CHANNEL NO.	1	2	13	3	4	14	5	6	15	7	8	16	9	10	17	11	12	18
PHASE	1	2	2 PED	3	4	4 PED	5	6	6 PED	7	8	8 PED	OL1	OL2	SPARE	OL3	OL4	SPARE
SIGNAL HEAD NO.	11	22,23	P21, P22	NU	41,42	P41, P42	NU	61,62	P61, P62	NU	82,83	NU	11	81	NU	21	NU	NU
RED		128			101			134			107							
YELLOW	*	129			102			135			108							
GREEN		130			103			136			109							
RED ARROW													A121	A124		A114		
YELLOW ARROW													A122	A125		A115		
FLASHING YELLOW ARROW													A123	A126		A116		
GREEN ARROW	127																	
Hand																		
Walker																		

NU = Not Used
 * Denotes install load resistor. See load resistor installation detail this sheet.
 ★ See pictorial of head wiring in detail this sheet.

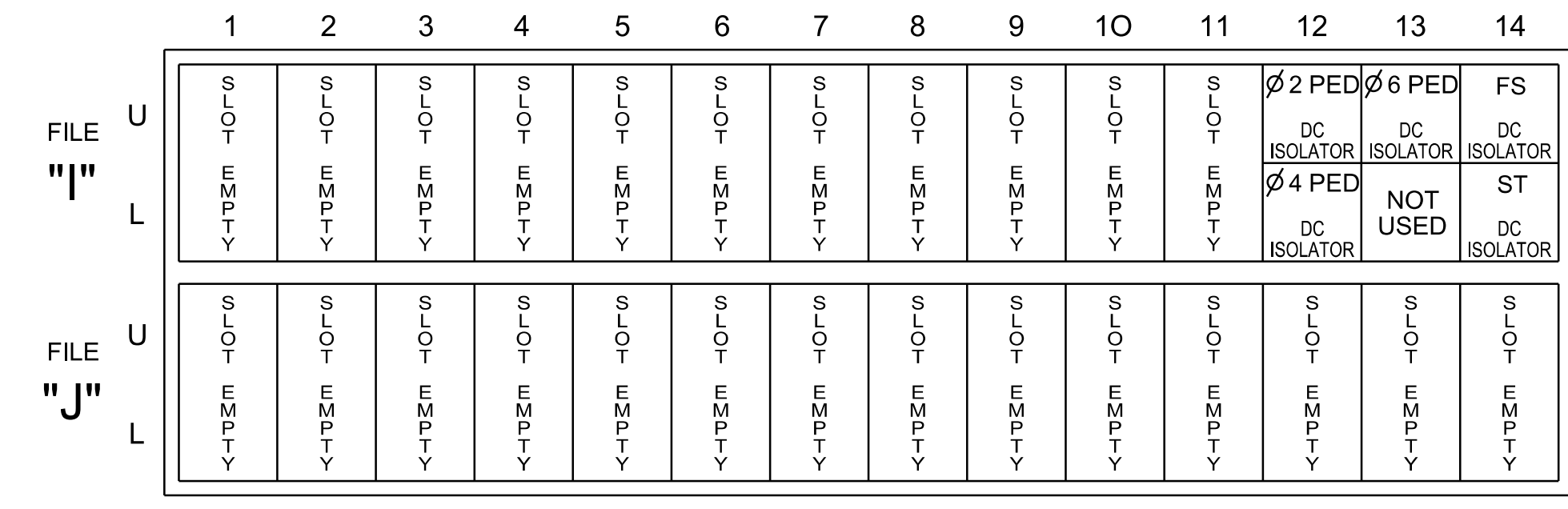
FYA SIGNAL WIRING DETAIL

(wire signal heads as shown)



INPUT FILE POSITION LAYOUT

(front view)



EX.: 1A, 2A, ETC. = LOOP NO.'S

FS = FLASH SENSE
 ST = STOP TIME

SPECIAL DETECTOR NOTE

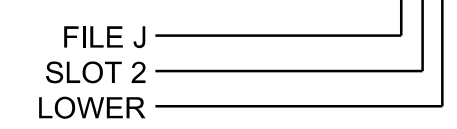
Install a multizone microwave detection system for vehicle detection. Perform installation according to manufacturer's directions and NCDOT engineer-approved mounting locations to accomplish the detection schemes shown on the Signal Design Plans.

INPUT FILE CONNECTION & PROGRAMMING CHART

LOOP NO.	LOOP TERMINAL	INPUT FILE POS.	PIN NO.	INPUT POINT	DETECTOR NO.	CALL PHASE	DELAY TIME	EXTEND TIME	EXTEND	ADDED INITIAL	CALL	DELAY DURING GREEN
PED PUSH BUTTONS												
P21,P22	TB8-4,6	I12U	67	33	2	PED 2						
P41,P42	TB8-5,6	I12L	69	35	4	PED 4						
P61,P62	TB8-7,9	I13U	68	34	6	PED 6						

NOTE: INSTALL DC ISOLATORS IN INPUT FILE SLOTS I12 AND I13.

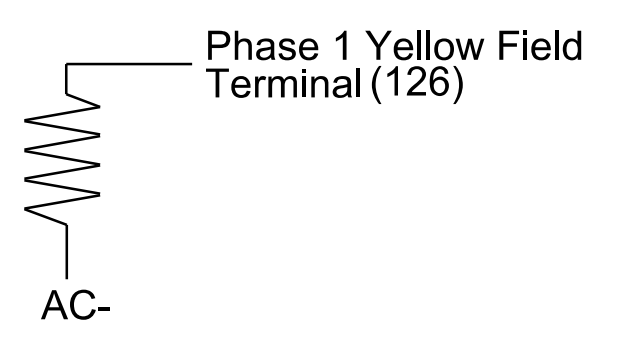
INPUT FILE POSITION LEGEND: J2L



LOAD RESISTOR INSTALLATION DETAIL

(install resistor as shown)

ACCEPTABLE VALUES	
Value (ohms)	Wattage
1.5K - 1.9K	25W (min)
2.0K - 3.0K	10W (min)



Electrical Detail - Sheet 1 of 2
 Temporary Design 3 - (TMP Phase III)

US 276 (Russ Avenue) at Shopping Center Entrance/ Lee Street
 Division 14 Haywood County Waynesville

Prepared For:

Prepared By: TS Popelka RKA PROJ. NO: 16085 (040)

Reviewed By: WJ Hamilton

Plan Date: April 2023

Sealed: 04/11/2023

Revised: N/A

750 N. Greenfield Pkwy, Garner, NC 27529

Seal: NORTH CAROLINA PROFESSIONAL ENGINEER SEAL 32396 WILLIAM J. HAMILTON

Signature: William J. Hamilton DATE: 04/11/2023

DocuSign ID: 42666270468484

SIGNATURE DATE

SIG. INVENTORY NO. 14-058713