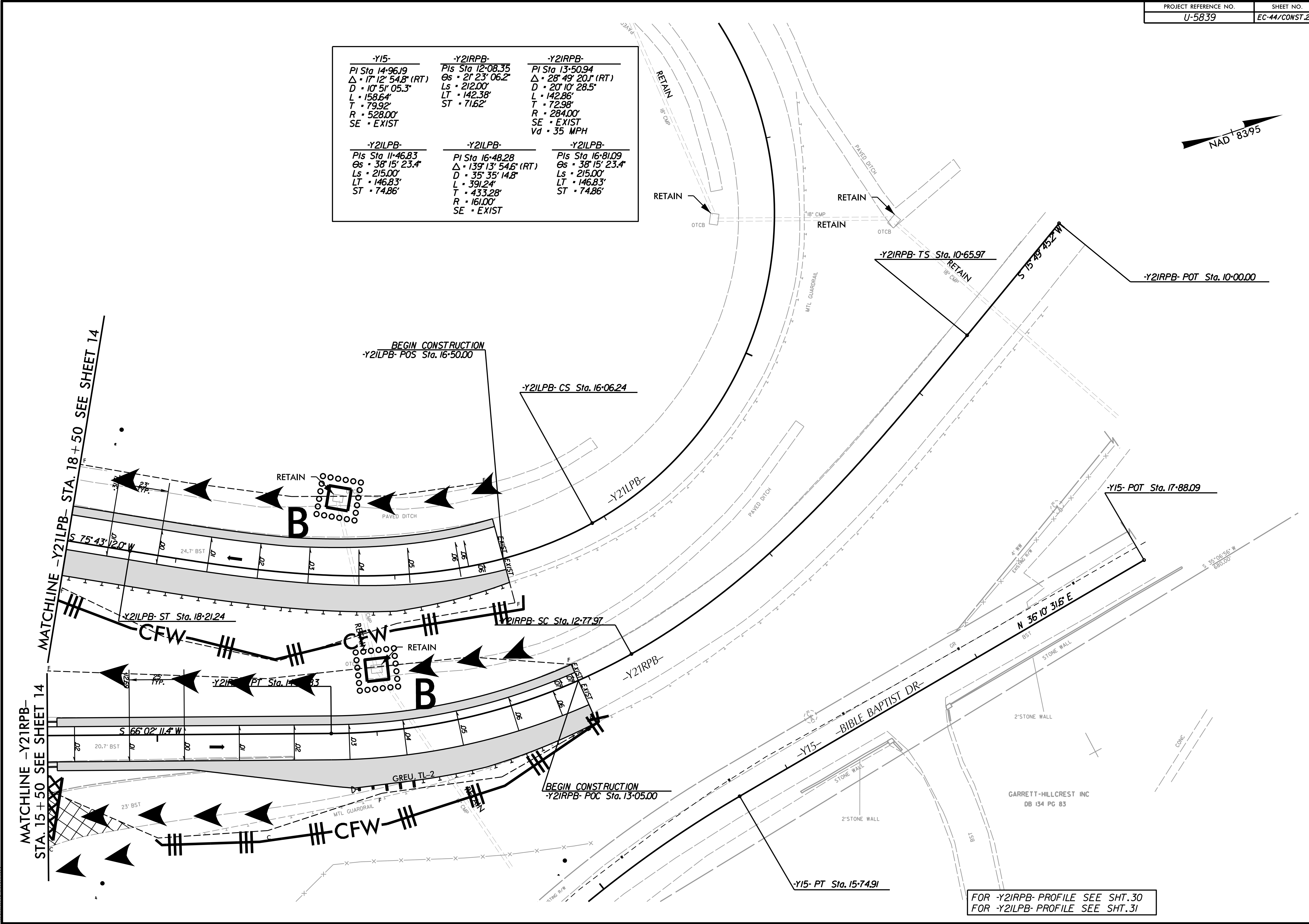


-Y15-	-Y2IRPB-	-Y2IRPB-
PI Sta 14+96.19	PI Sta 12+08.35	PI Sta 13+50.94
$\Delta$ = 17° 12' 54.8" (RT)	$\Theta$ s = 21° 23' 06.2"	$\Delta$ = 28° 49' 20.1" (RT)
D = 10° 51' 05.3"	Ls = 212.00'	D = 20° 10' 28.5"
L = 158.64'	LT = 142.38'	L = 142.86'
T = 79.92'	ST = 71.62'	T = 72.98'
R = 528.00'		R = 284.00'
SE = EXIST		SE = EXIST
		Vd = 35 MPH

-Y2ILPB-	-Y2ILPB-	-Y2ILPB-
PIs Sta 11+46.83	PI Sta 16+48.28	PIs Sta 16+81.09
$\Theta$ s = 38° 15' 23.4"	$\Delta$ = 139° 13' 54.6" (RT)	$\Theta$ s = 38° 15' 23.4"
Ls = 215.00'	D = 35° 35' 14.8"	Ls = 215.00'
LT = 146.83'	L = 391.24'	LT = 146.83'
ST = 74.86'	T = 433.28'	ST = 74.86'
	R = 161.00'	
	SE = EXIST	



FOR -Y2IRPB- PROFILE SEE SHT.30  
 FOR -Y2ILPB- PROFILE SEE SHT.31

3/13/2023  
 R:\Environmental\Design\U5839\_EC\_44\Final.dgn  
 8/17/99