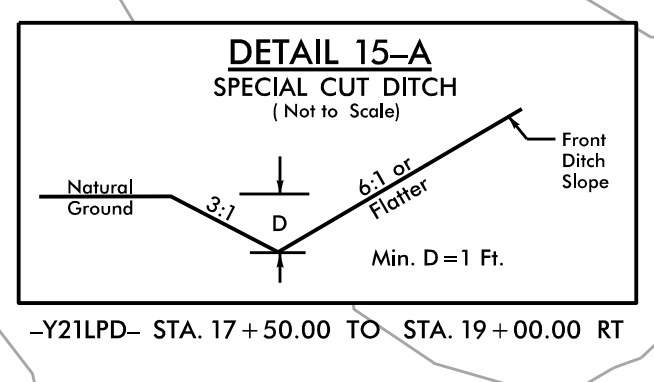
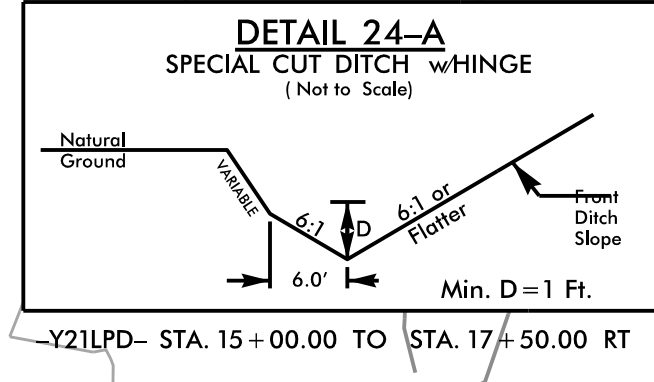
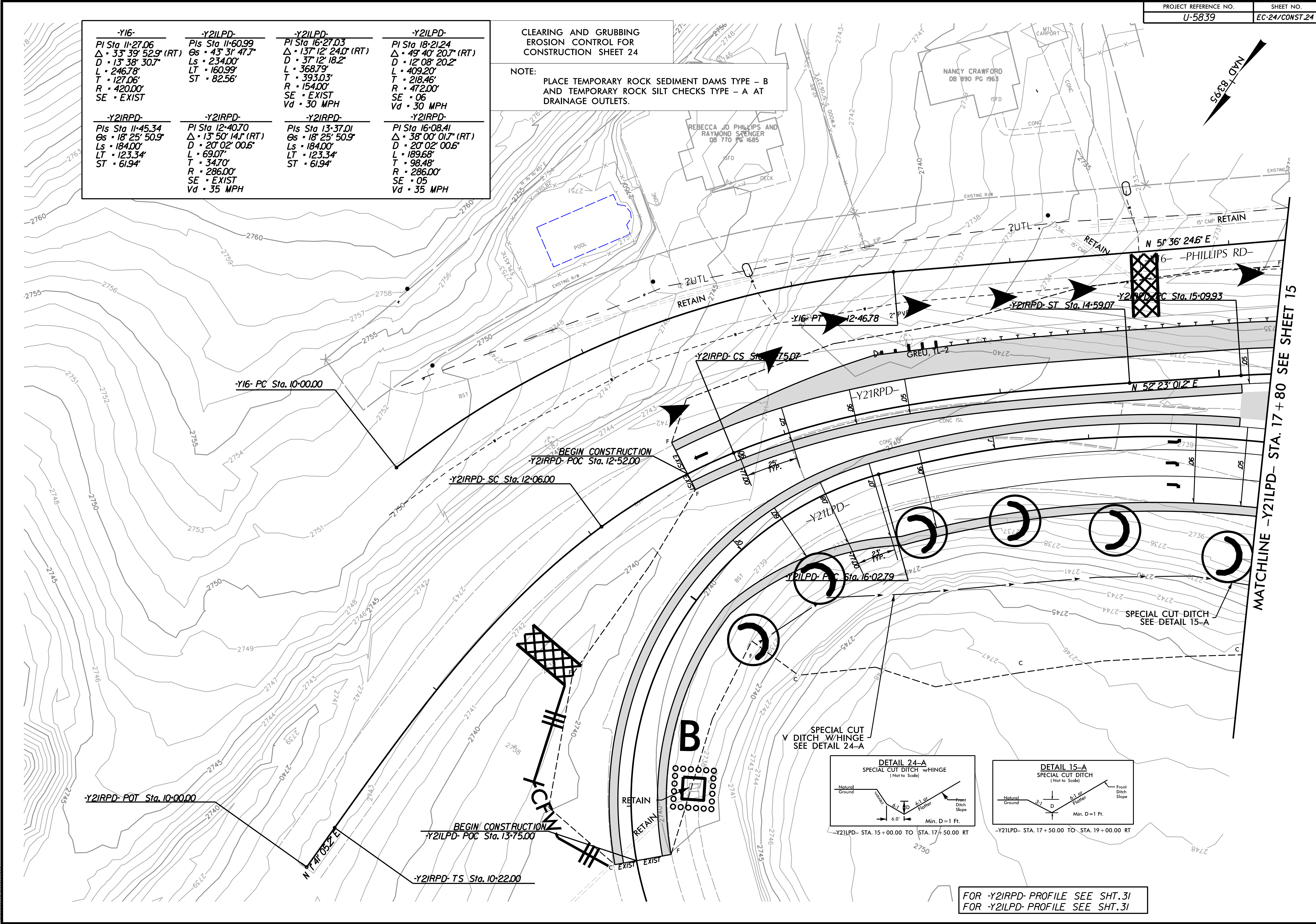


<p>-Y16- PI Sta 11-27.06 $\Delta \cdot 33^\circ 39' 52.9''$ (RT) D $\cdot 13' 38' 30.7''$ L $\cdot 246.78'$ T $\cdot 127.06'$ R $\cdot 420.00'$ SE \cdot EXIST</p>	<p>-Y21RPD- Pls Sta 11-60.99 $\Theta_s \cdot 43^\circ 31' 47.7''$ Ls $\cdot 234.00'$ LT $\cdot 160.99'$ ST $\cdot 82.56'$</p>	<p>-Y21LPD- PI Sta 16-27.03 $\Delta \cdot 13^\circ 12' 24.0''$ (RT) D $\cdot 37' 12' 18.2''$ L $\cdot 368.79'$ T $\cdot 393.03'$ R $\cdot 154.00'$ SE \cdot EXIST Vd $\cdot 30$ MPH</p>	<p>-Y21LPD- PI Sta 18-21.24 $\Delta \cdot 49^\circ 40' 20.7''$ (RT) D $\cdot 12' 08' 20.2''$ L $\cdot 409.20'$ T $\cdot 218.46'$ R $\cdot 472.00'$ SE $\cdot 06$ Vd $\cdot 30$ MPH</p>
<p>-Y21RPD- Pls Sta 11-45.34 $\Theta_s \cdot 18^\circ 25' 50.9''$ Ls $\cdot 184.00'$ LT $\cdot 123.34'$ ST $\cdot 61.94'$</p>	<p>-Y21RPD- PI Sta 12-40.70 $\Delta \cdot 13^\circ 50' 14.1''$ (RT) D $\cdot 20' 02' 00.6''$ L $\cdot 69.07'$ T $\cdot 34.70'$ R $\cdot 286.00'$ SE \cdot EXIST Vd $\cdot 35$ MPH</p>	<p>-Y21RPD- Pls Sta 13-37.01 $\Theta_s \cdot 18^\circ 25' 50.9''$ Ls $\cdot 184.00'$ LT $\cdot 123.34'$ ST $\cdot 61.94'$</p>	<p>-Y21RPD- PI Sta 16-08.41 $\Delta \cdot 38^\circ 00' 01.7''$ (RT) D $\cdot 20' 02' 00.6''$ L $\cdot 189.68'$ T $\cdot 98.48'$ R $\cdot 286.00'$ SE $\cdot 05$ Vd $\cdot 35$ MPH</p>

**CLEARING AND GRUBBING
 EROSION CONTROL FOR
 CONSTRUCTION SHEET 24**

NOTE:
 PLACE TEMPORARY ROCK SEDIMENT DAMS TYPE - B
 AND TEMPORARY ROCK SILT CHECKS TYPE - A AT
 DRAINAGE OUTLETS.



FOR -Y21RPD- PROFILE SEE SHT.31
 FOR -Y21LPD- PROFILE SEE SHT.31

3/10/2023 R:\Environmental\Design\U5839_EC_24_C&G.dgn
 8/17/99