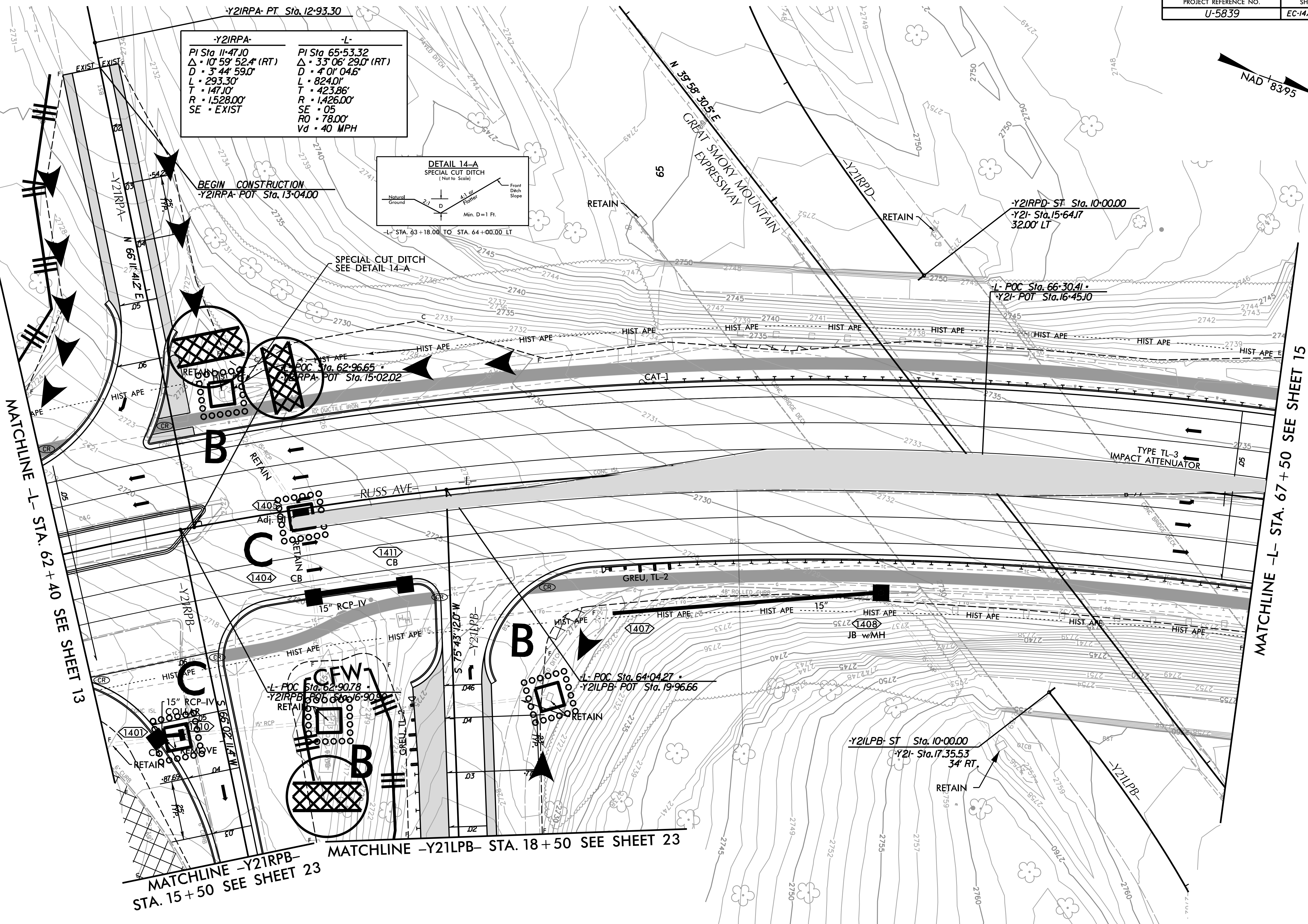
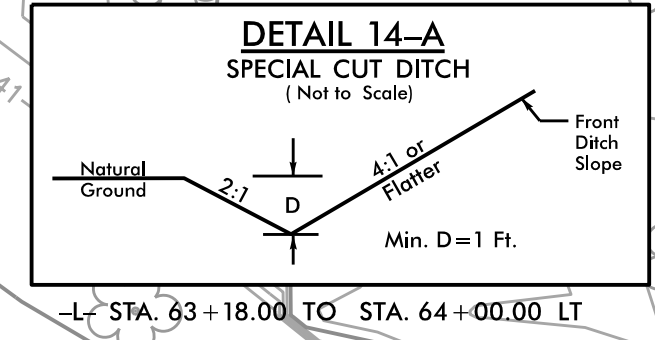


-Y2IRPA-	-L-
PI Sta 11+47.10	PI Sta 65+53.32
Δ · 10° 59' 52.4" (RT)	Δ · 33° 06' 29.0" (RT)
D · 3' 44' 59.0"	D · 4' 01' 04.5"
L · 293.30'	L · 824.01'
T · 147.10'	T · 423.86'
R · 1,528.00'	R · 1,426.00'
SE · EXIST	SE · 05
	RO · 78.00'
	Vd · 40 MPH



MATCHLINE -L- STA. 62 + 40 SEE SHEET 13

MATCHLINE -L- STA. 67 + 50 SEE SHEET 15

MATCHLINE -Y2IRPB- STA. 15 + 50 SEE SHEET 23

MATCHLINE -Y2ILPB- STA. 18 + 50 SEE SHEET 23



FOR -L- PROFILE SEE SHT.26-27
 FOR -Y2IRPA- PROFILE SEE SHT.30
 FOR -Y2IRPB- PROFILE SEE SHT.30
 FOR -Y2ILPB- PROFILE SEE SHT.31

NOTE:
 PLACE TEMPORARY ROCK SEDIMENT DAMS TYPE - B AND TEMPORARY ROCK SILT CHECKS TYPE - A AT DRAINAGE OUTLETS.

NOTE: UTILIZE FABRIC INSERT INLET DEVICES IN LIEU OF ROCK INLET SEDIMENT TRAPS, TYPE-C AS DIRECTED TO AVOID IMPOUNDMENT OF RUNOFF IN ROADWAY OPEN TO TRAFFIC.

CLEARING AND GRUBBING EROSION CONTROL FOR CONSTRUCTION SHEET 14