

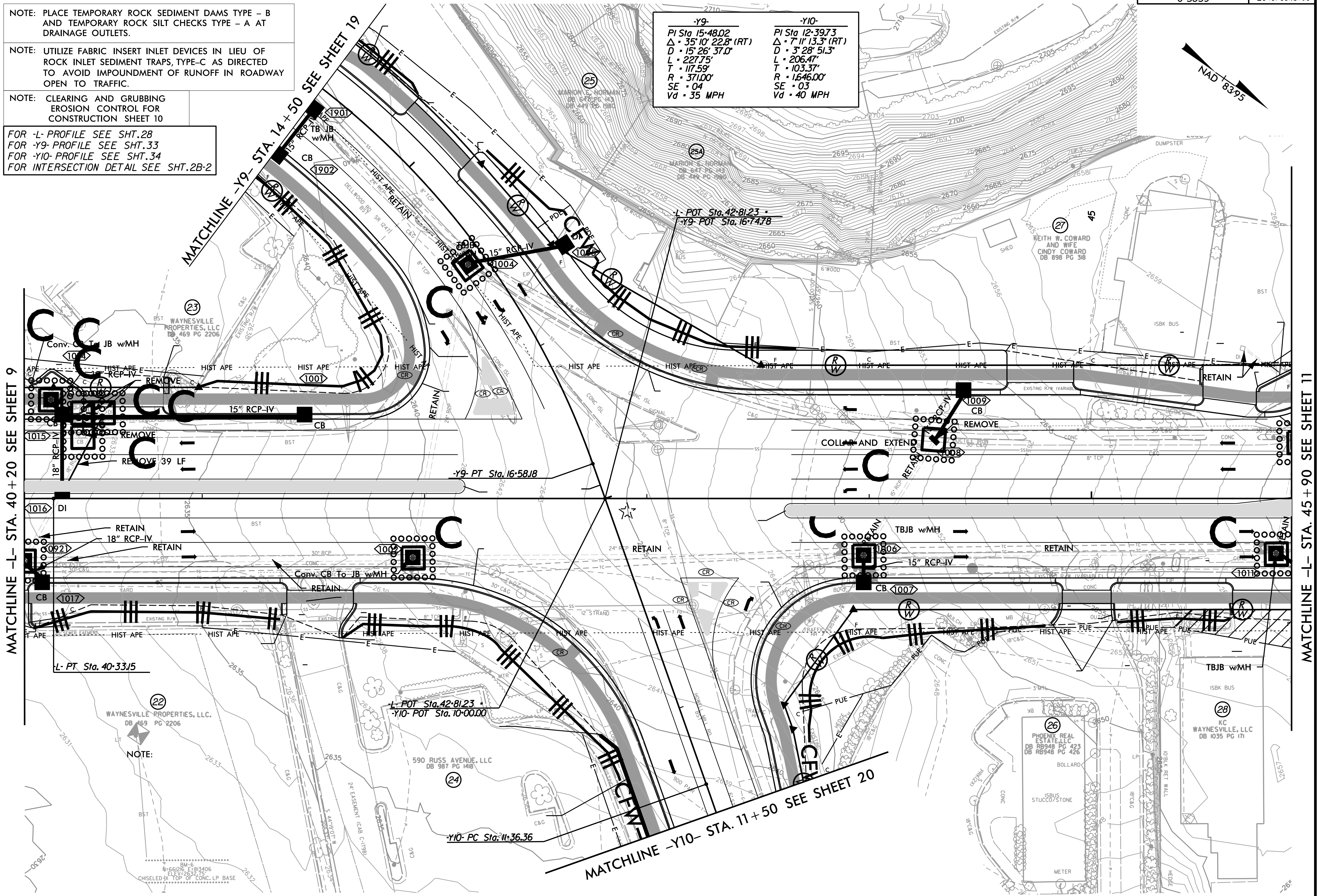
NOTE: PLACE TEMPORARY ROCK SEDIMENT DAMS TYPE - B AND TEMPORARY ROCK SILT CHECKS TYPE - A AT DRAINAGE OUTLETS.

NOTE: UTILIZE FABRIC INSERT INLET DEVICES IN LIEU OF ROCK INLET SEDIMENT TRAPS, TYPE-C AS DIRECTED TO AVOID IMPOUNDMENT OF RUNOFF IN ROADWAY OPEN TO TRAFFIC.

NOTE: CLEARING AND GRUBBING EROSION CONTROL FOR CONSTRUCTION SHEET 10

FOR -L- PROFILE SEE SHT.28  
 FOR -Y9- PROFILE SEE SHT.33  
 FOR -Y10- PROFILE SEE SHT.34  
 FOR INTERSECTION DETAIL SEE SHT.2B-2

-Y9-	-Y10-
PI Sta 15+48.02	PI Sta 12+39.73
$\Delta \cdot 35^{\circ} 10' 22.8" (RT)$	$\Delta \cdot 7^{\circ} 11' 13.3" (RT)$
D · 15' 26' 37.0"	D · 3' 28' 51.3"
L · 227.75'	L · 206.47'
T · 117.59'	T · 103.37'
R · 371.00'	R · 1646.00'
SE · 04	SE · 03
Vd · 35 MPH	Vd · 40 MPH



MATCHLINE -L- STA. 40+20 SEE SHEET 9

MATCHLINE -L- STA. 45+90 SEE SHEET 11

MATCHLINE -Y9- STA. 14+50 SEE SHEET 19

MATCHLINE -Y10- STA. 11+50 SEE SHEET 20

8/17/2023  
 R:\10-2023-mental\Design\U5839-EC-10-C&G.dgn  
 samantha

NOTE:  
 N=66126 E=813406  
 EL=2632.75  
 CHISELED TOP OF CONC. LP BASE