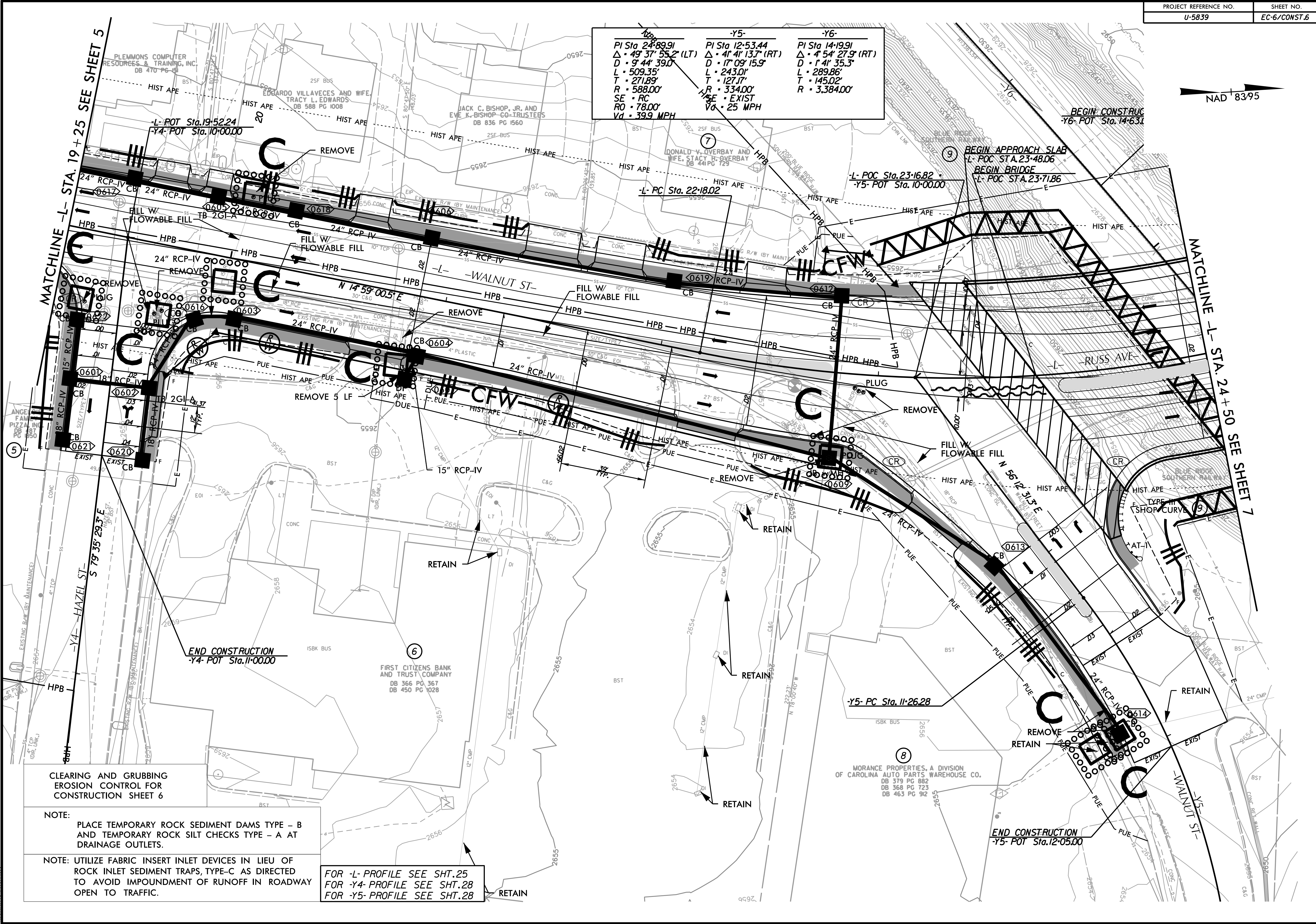


	-Y5-	-Y6-
PI Sta 24+89.91	PI Sta 12+53.44	PI Sta 14+19.91
Δ = 49' 37" 55.2" (LT)	Δ = 41' 41" 13.7" (RT)	Δ = 4' 54" 27.9" (RT)
D = 9' 44" 39.0'	D = 17' 09" 15.9'	D = 1' 41" 35.3'
L = 509.35'	L = 243.01'	L = 289.86'
T = 271.89'	T = 127.17'	T = 145.02'
R = 588.00'	R = 334.00'	R = 3,384.00'
SE = RC	SE = EXIST	
RO = 78.00'	VO = 25 MPH	
Vd = 39.9 MPH		



CLEARING AND GRUBBING  
EROSION CONTROL FOR  
CONSTRUCTION SHEET 6

NOTE:  
PLACE TEMPORARY ROCK SEDIMENT DAMS TYPE - B  
AND TEMPORARY ROCK SILT CHECKS TYPE - A AT  
DRAINAGE OUTLETS.

NOTE: UTILIZE FABRIC INSERT INLET DEVICES IN LIEU OF  
ROCK INLET SEDIMENT TRAPS, TYPE-C AS DIRECTED  
TO AVOID IMPOUNDMENT OF RUNOFF IN ROADWAY  
OPEN TO TRAFFIC.

FOR -L- PROFILE SEE SHT.25  
FOR -Y4- PROFILE SEE SHT.28  
FOR -Y5- PROFILE SEE SHT.28

3/10/2023 R:\Environmental\Design\U5839-EC-06-C&G.dgn