

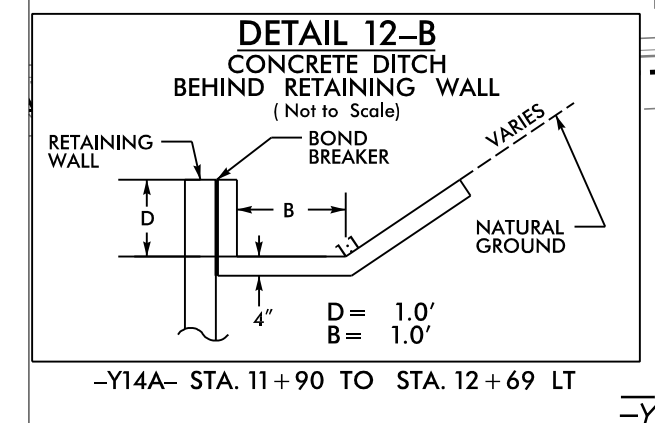
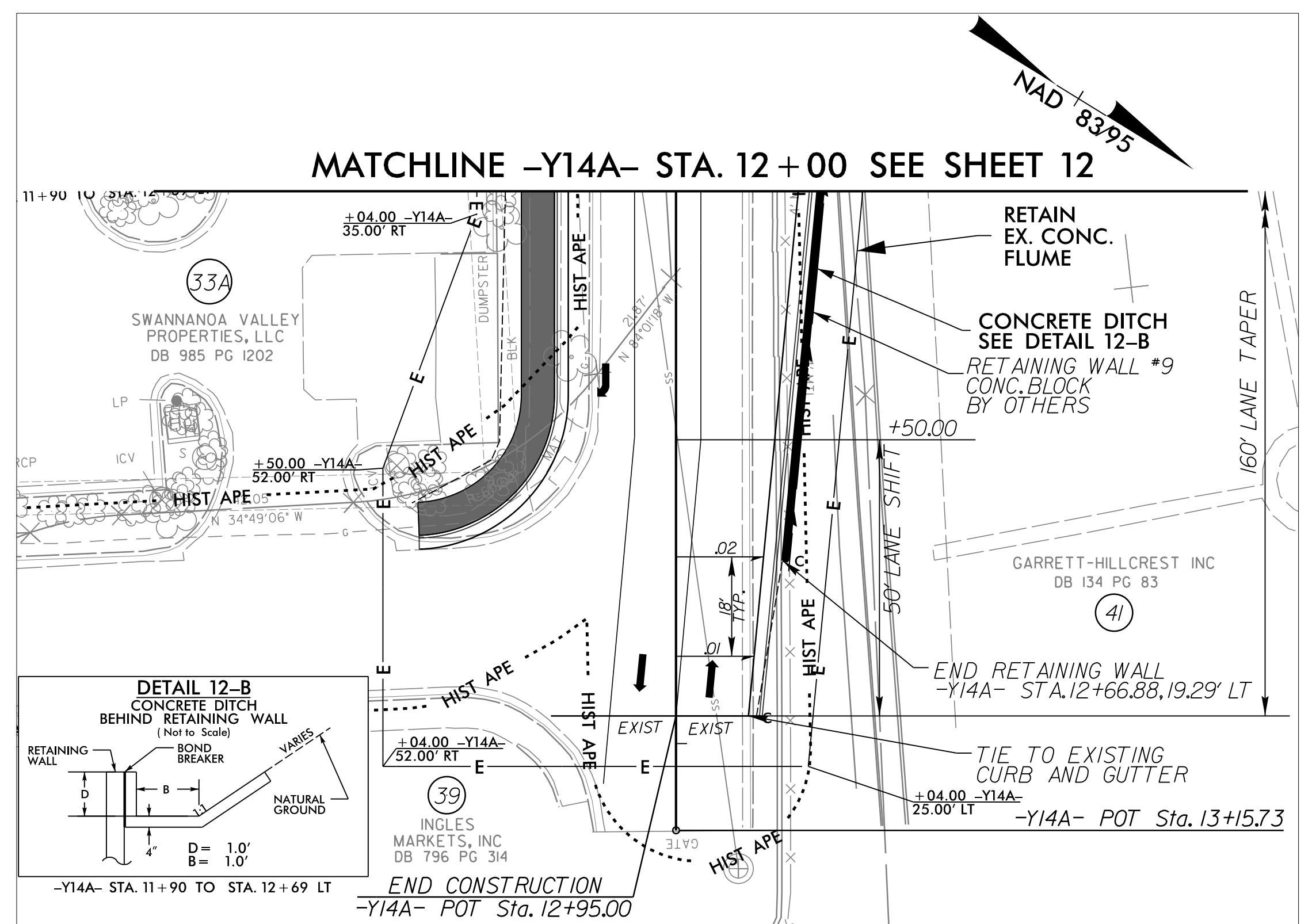
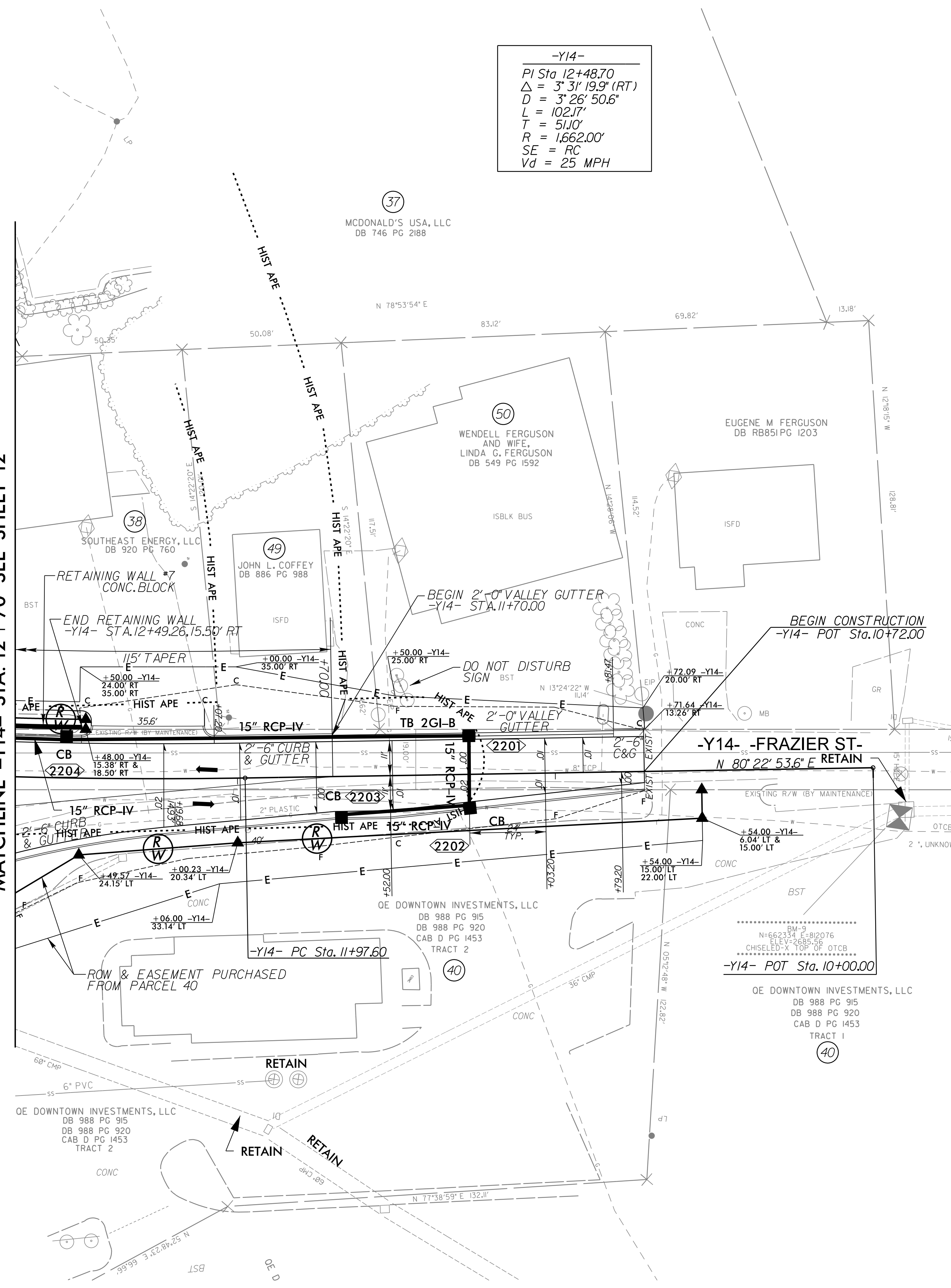
8.17.19

PROJECT REFERENCE NO. <i>U-5839</i>	SHEET NO. <i>22</i>
RW SHEET NO.	
ROADWAY DESIGN ENGINEER 5/9/2023	HYDRAULICS ENGINEER 5/9/2023
<p>Chris Anderson</p> <p>David P. Becker</p> <p>DOCUMENT NOT CONSIDERED FINAL UNLESS ALL SIGNATURES COMPLETED</p>	



-Y14-
 PI Sta. 12+48.70
 $\Delta = 3' 31'' 19.9''$ (RT)
 $D = 3' 26' 50.6''$
 $L = 102.17'$
 $T = 51.10'$
 $R = 1,662.00'$
 $SE = RC$
 $Vd = 25$ MPH

MATCHLINE -Y14- STA. 12 + 70 SEE SHEET 12



HIST APE AREA OF POTENTIAL EFFECTS BOUNDARY

FOR WALL ENVELOPES SEE SHT.W-6

FOR -Y14- PROFILE SEE SHT.35

RETAINING WALL #9 IS TO BE BUILT BY OTHERS

NV5

NV5 ENGINEERS & CONSULTANTS, INC.
 7500 E. INDEPENDENCE BLVD, STE 100
 CHARLOTTE, NC 28227
 P: 704.537.7300 www.NV5.com
 NC License # F-1333
 formerly CALYX Engineers & Consultants

2/23/2023 R:\Roadway\Pro\U5839_RDY_PSH_22.dgn Ryan Carothers