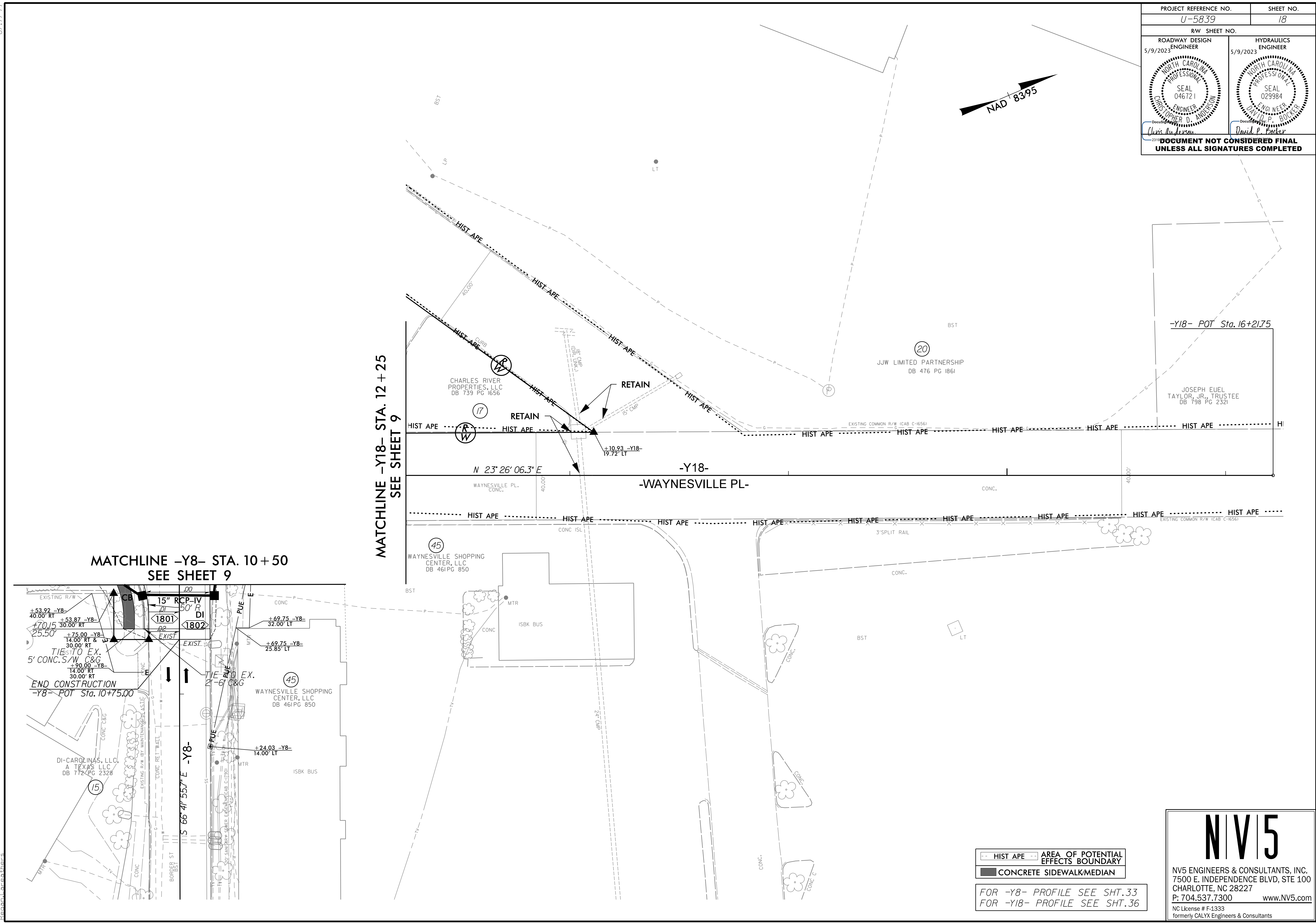


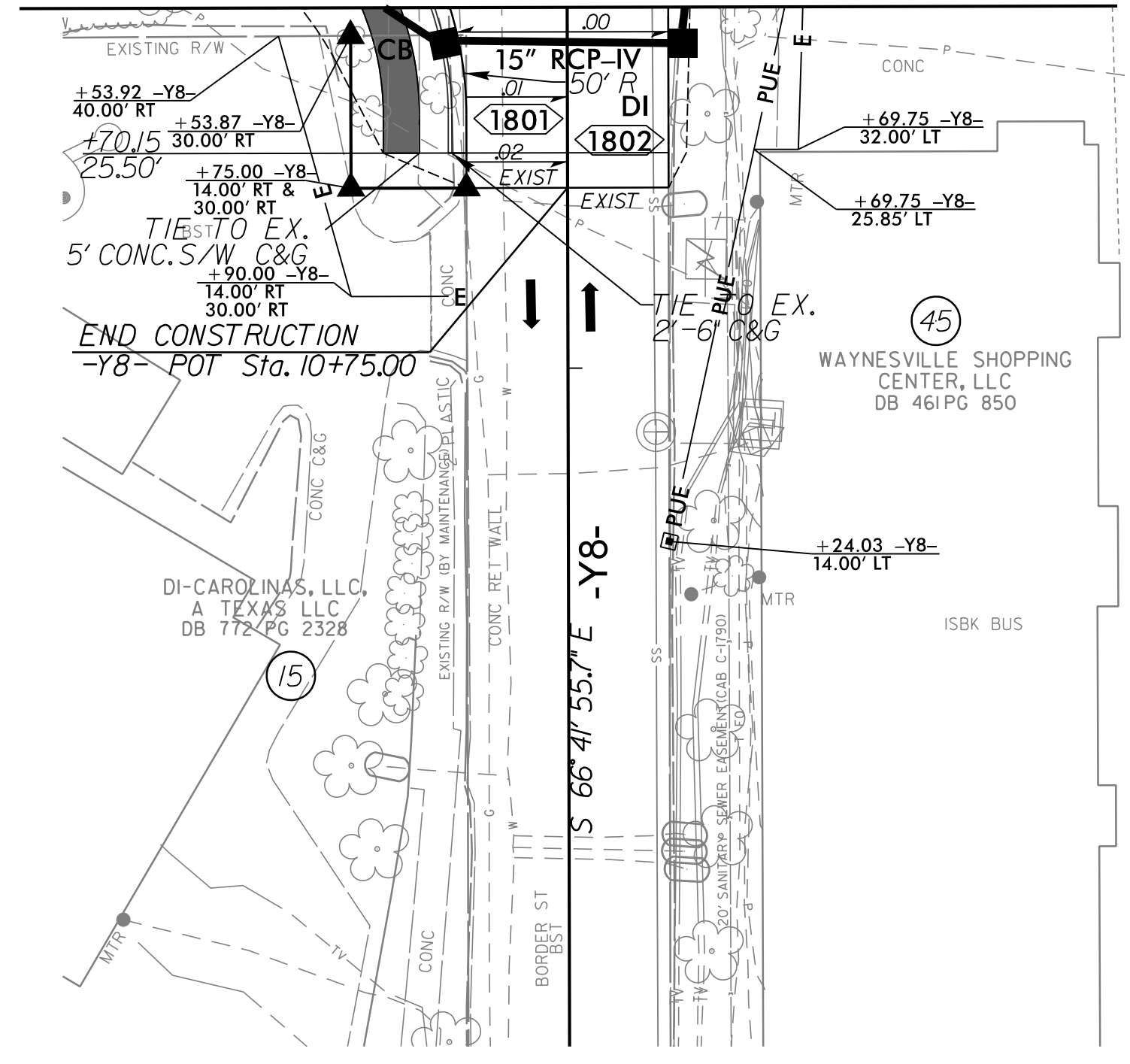
8/17/99

PROJECT REFERENCE NO. U-5839	SHEET NO. 18
RW SHEET NO.	
ROADWAY DESIGN ENGINEER 5/9/2023	HYDRAULICS ENGINEER 5/9/2023
<p>DOCUMENT NOT CONSIDERED FINAL UNLESS ALL SIGNATURES COMPLETED</p>	



MATCHLINE -Y8- STA. 10 + 50
SEE SHEET 9

MATCHLINE -Y18- STA. 12 + 25
SEE SHEET 9



--- HIST APE --- AREA OF POTENTIAL EFFECTS BOUNDARY
 █ CONCRETE SIDEWALK/MEDIAN

FOR -Y8- PROFILE SEE SHT. 33
 FOR -Y18- PROFILE SEE SHT. 36

NV5
 NV5 ENGINEERS & CONSULTANTS, INC.
 7500 E. INDEPENDENCE BLVD, STE 100
 CHARLOTTE, NC 28227
 P: 704.537.7300 www.NV5.com
 NC License # F-1333
 formerly CALYX Engineers & Consultants

8/23/2023
R:\Roadway\Proj\U5839_RDY_PSH_18.dgn
Reagan, C