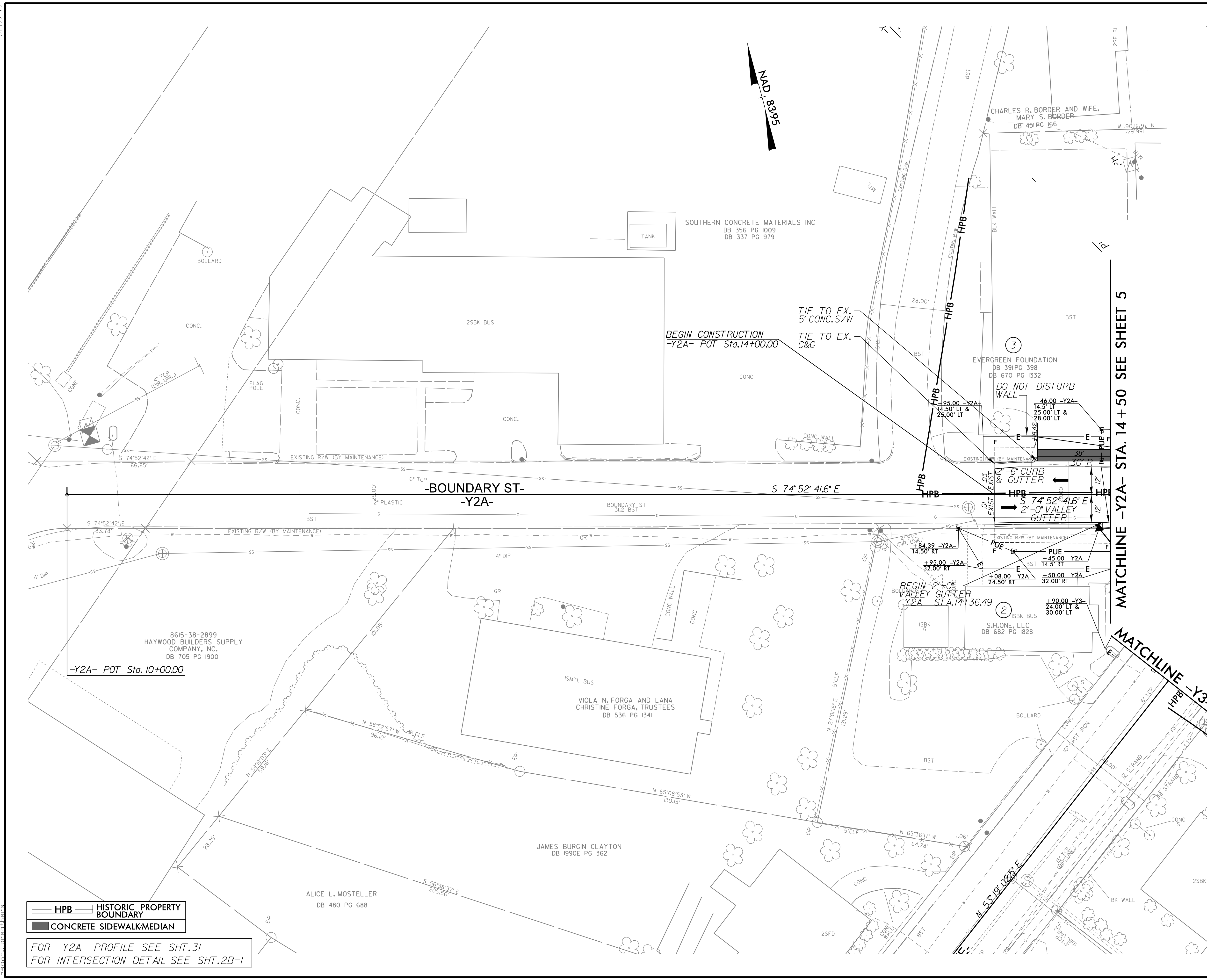


8.17.17.99

PROJECT REFERENCE NO. U-5839	SHEET NO. 17
RW SHEET NO.	
ROADWAY DESIGN ENGINEER 5/9/2023	HYDRAULICS ENGINEER 5/9/2023
<p>DOCUMENT NOT CONSIDERED FINAL UNLESS ALL SIGNATURES COMPLETED</p>	



HPB HISTORIC PROPERTY BOUNDARY
 CONCRETE SIDEWALK/MEDIAN

FOR -Y2A- PROFILE SEE SHT.31
 FOR INTERSECTION DETAIL SEE SHT.2B-1

MATCHLINE -Y2A- STA. 14 + 50 SEE SHEET 5

MATCHLINE -Y3- STA. 14 + 96 SEE SHEET 5

NV5

NV5 ENGINEERS & CONSULTANTS, INC.
 7500 E. INDEPENDENCE BLVD, STE 100
 CHARLOTTE, NC 28227
 P: 704.537.7300 www.NV5.com
 NC License # F-1333
 formerly CALYX Engineers & Consultants

2/23/2023
 R:\Roadway\Pro\U5839_RDY_PSH.17.dgn
 Ryan Carothers