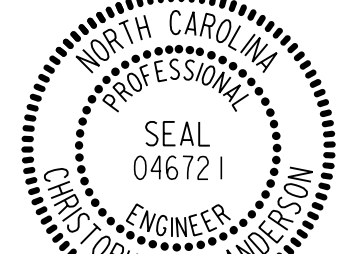

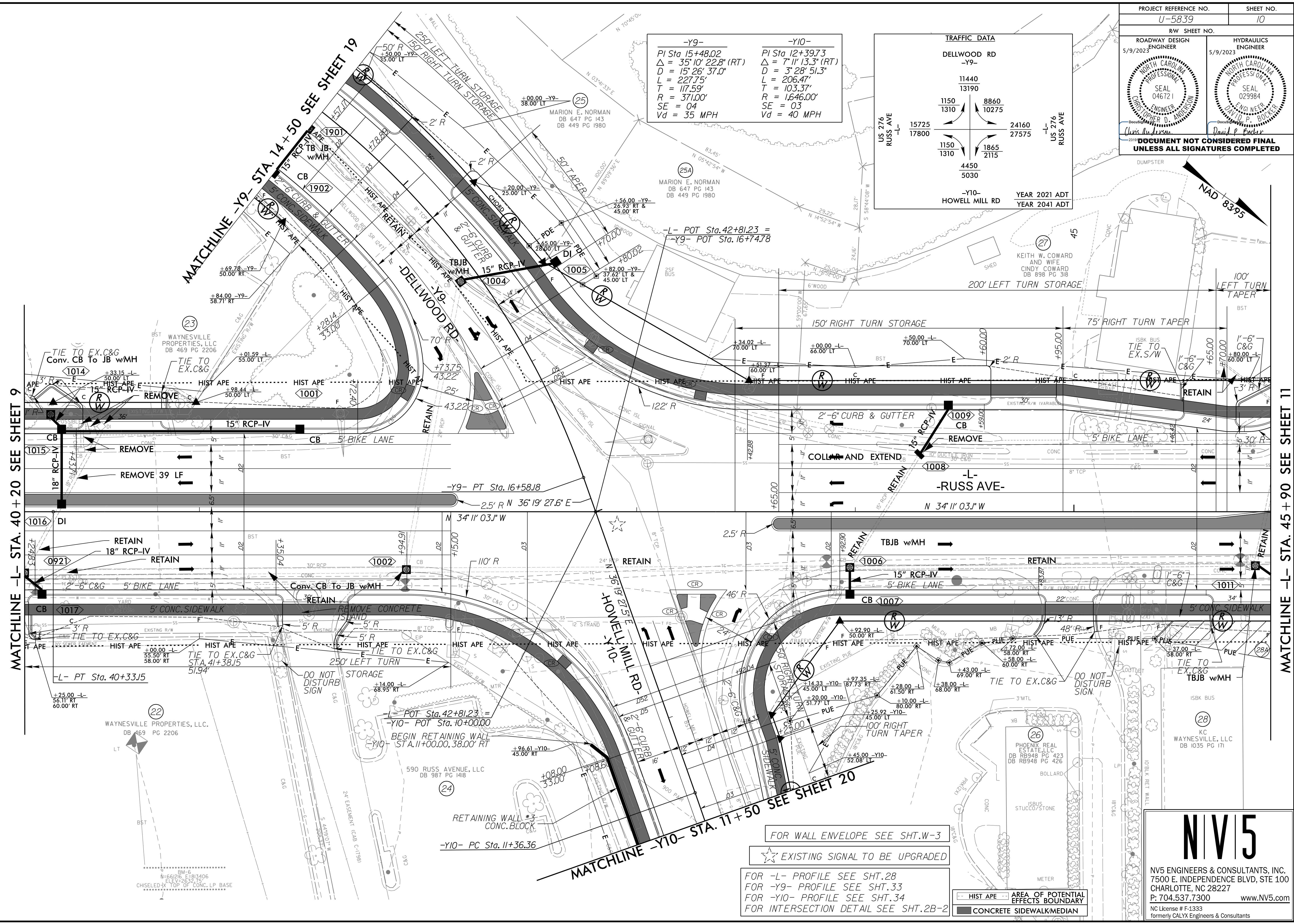


| | |
|---|--|
| PROJECT REFERENCE NO. U-5839 | SHEET NO. 10 |
| RW SHEET NO. | |
| ROADWAY DESIGN ENGINEER 5/9/2023 | HYDRAULICS ENGINEER 5/9/2023 |
|  Chris Anderson Professional Engineer No. 046721 State of North Carolina |  David P. Boyler Professional Engineer No. 029984 State of North Carolina |
| DOCUMENT NOT CONSIDERED FINAL UNLESS ALL SIGNATURES COMPLETED | |

| | |
|------------------------------|-----------------------------|
| -Y9- | -Y10- |
| PI Sta 15+48.02 | PI Sta 12+39.73 |
| $\Delta = 35'10" 22.8" (RT)$ | $\Delta = 7'11" 13.3" (RT)$ |
| D = 15' 26' 37.0" | D = 3' 28' 51.3" |
| L = 227.75' | L = 206.47' |
| T = 117.59' | T = 103.37' |
| R = 371.00' | R = 1,646.00' |
| SE = 04 | SE = 03 |
| Vd = 35 MPH | Vd = 40 MPH |

| TRAFFIC DATA | | | |
|----------------|-------|---------------|--|
| DELLWOOD RD | | | |
| -Y9- | | | |
| 11440 | | | |
| 13190 | | | |
| 1150 | 8860 | 24160 | |
| 1310 | 10275 | 27575 | |
| 1150 | 1865 | | |
| 1310 | 2115 | | |
| 4450 | | | |
| 5030 | | | |
| -Y10- | | YEAR 2021 ADT | |
| HOWELL MILL RD | | YEAR 2041 ADT | |



MATCHLINE -L- STA. 40 + 20 SEE SHEET 9

MATCHLINE -Y9- STA. 14 + 50 SEE SHEET 19

MATCHLINE -Y10- STA. 11 + 50 SEE SHEET 20

MATCHLINE -L- STA. 45 + 90 SEE SHEET 11

FOR WALL ENVELOPE SEE SHT.W-3

★ EXISTING SIGNAL TO BE UPGRADED

FOR -L- PROFILE SEE SHT.28
FOR -Y9- PROFILE SEE SHT.33
FOR -Y10- PROFILE SEE SHT.34
FOR INTERSECTION DETAIL SEE SHT.2B-2

--- HIST APE --- AREA OF POTENTIAL EFFECTS BOUNDARY

■ CONCRETE SIDEWALK/MEDIAN

NV5

NV5 ENGINEERS & CONSULTANTS, INC.
7500 E. INDEPENDENCE BLVD, STE 100
CHARLOTTE, NC 28227
P: 704.537.7300 www.NV5.com

NC License # F-1333
formerly CALYX Engineers & Consultants

8.17.7.99
 5/9/2023
 R:\Projects\ProJ\U5839_R0Y_PSH_10.dgn
 Ryan Carothers