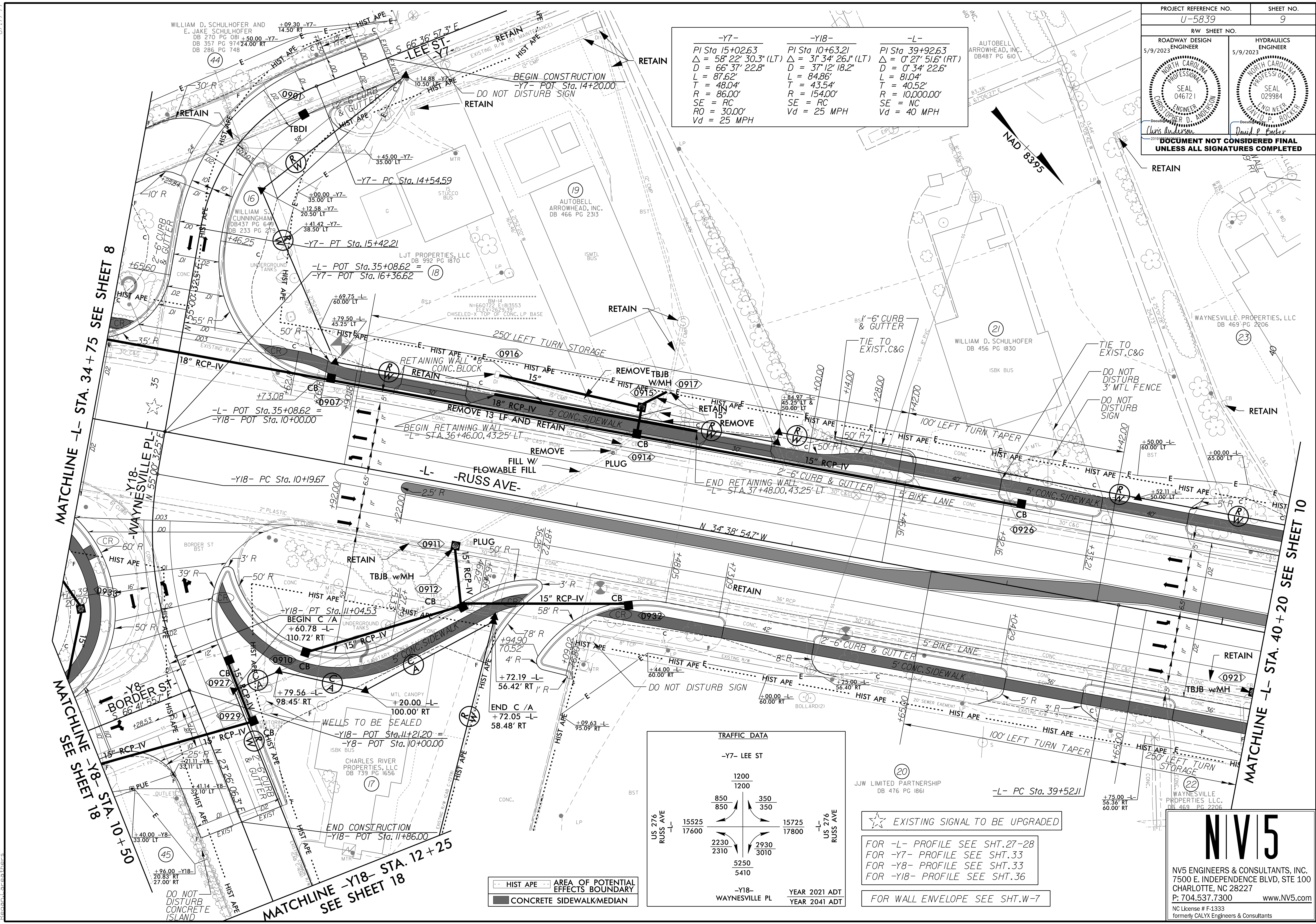


PROJECT REFERENCE NO. <b>U-5839</b>		SHEET NO. <b>9</b>	
RW SHEET NO.			
ROADWAY DESIGN ENGINEER 5/9/2023		HYDRAULICS ENGINEER 5/9/2023	
<b>DOCUMENT NOT CONSIDERED FINAL UNLESS ALL SIGNATURES COMPLETED</b>			

-Y7-	-Y18-	-L-
PI Sta 15+02.63	PI Sta 10+63.21	PI Sta 39+92.63
$\Delta = 58' 22" 30.3" (LT)$	$\Delta = 37' 34" 26.1" (LT)$	$\Delta = 0' 27" 51.6" (RT)$
$D = 66' 37" 22.8"$	$D = 37' 12" 18.2"$	$D = 0' 34" 22.6"$
$L = 87.62'$	$L = 84.86'$	$L = 81.04'$
$T = 48.04'$	$T = 43.54'$	$T = 40.52'$
$R = 86.00'$	$R = 154.00'$	$R = 10,000.00'$
$SE = RC$	$SE = RC$	$SE = NC$
$RO = 30.00'$	$Vd = 25 MPH$	$Vd = 40 MPH$



TRAFFIC DATA			
-Y7- LEE ST			
1200		1200	
850	350	350	850
15525		15725	
17600		17800	
2230		2930	
2310		3010	
5250		5410	
-Y18- WAYNESVILLE PL			
YEAR 2021 ADT		YEAR 2041 ADT	

☆ EXISTING SIGNAL TO BE UPGRADED

FOR -L- PROFILE SEE SHT.27-28  
 FOR -Y7- PROFILE SEE SHT.33  
 FOR -Y8- PROFILE SEE SHT.33  
 FOR -Y18- PROFILE SEE SHT.36

FOR WALL ENVELOPE SEE SHT.W-7

**NV5**

NV5 ENGINEERS & CONSULTANTS, INC.  
 7500 E. INDEPENDENCE BLVD, STE 100  
 CHARLOTTE, NC 28227  
 P: 704.537.7300 www.NV5.com

NC License # F-1333  
 formerly CALYX Engineers & Consultants

8/17/2023  
 R:\Projects\U5839\RDY\_PSH.dgn  
 2/23/2023  
 R:\Projects\U5839\RDY\_PSH.dgn  
 8/17/2023