

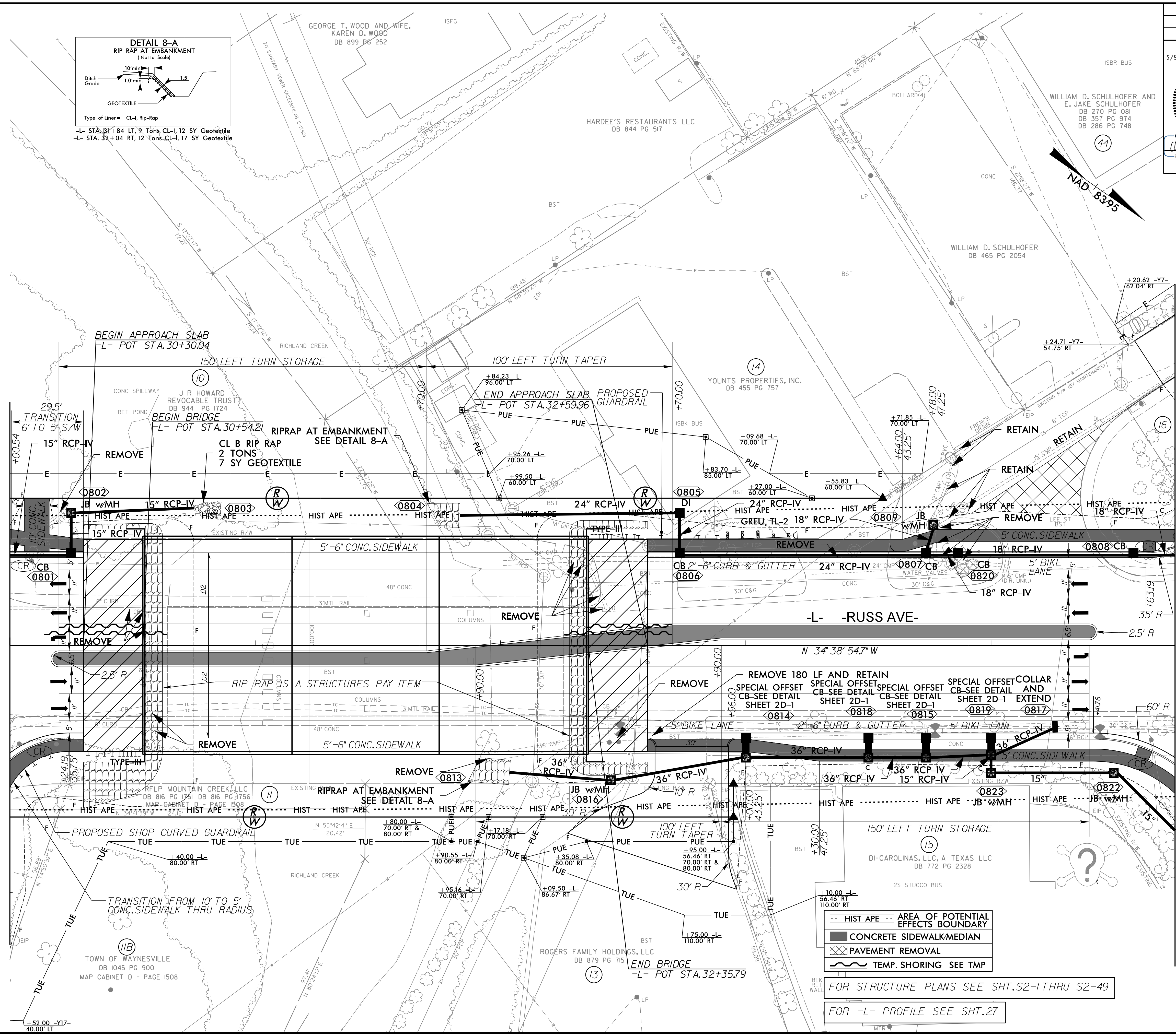
8/17/2023

R:\2023\Projects\U5839_R0Y_PSH_08.dgn
Reagan, C. (reagan)

PROJECT REFERENCE NO. U-5839	SHEET NO. 8
RW SHEET NO.	
ROADWAY DESIGN ENGINEER 5/9/2023	HYDRAULICS ENGINEER 5/9/2023
WILLIAM D. SCHULHOFER AND E. JAKE SCHULHOFER DB 270 PG 081 DB 357 PG 974 DB 286 PG 748	
DOCUMENT NOT CONSIDERED FINAL UNLESS ALL SIGNATURES COMPLETED	

MATCHLINE -L- STA. 30+00 SEE SHEET 7

MATCHLINE -L- STA. 34+75 SEE SHEET 9



	HIST APE
	AREA OF POTENTIAL EFFECTS BOUNDARY
	CONCRETE SIDEWALK/MEDIAN
	PAVEMENT REMOVAL
	TEMP. SHORING SEE TMP

FOR STRUCTURE PLANS SEE SHT. S2-1 THRU S2-49

FOR -L- PROFILE SEE SHT. 27

NV5

NV5 ENGINEERS & CONSULTANTS, INC.
 7500 E. INDEPENDENCE BLVD, STE 100
 CHARLOTTE, NC 28227
 P: 704.537.7300 www.NV5.com

NC License # F-1333
 formerly CALYX Engineers & Consultants