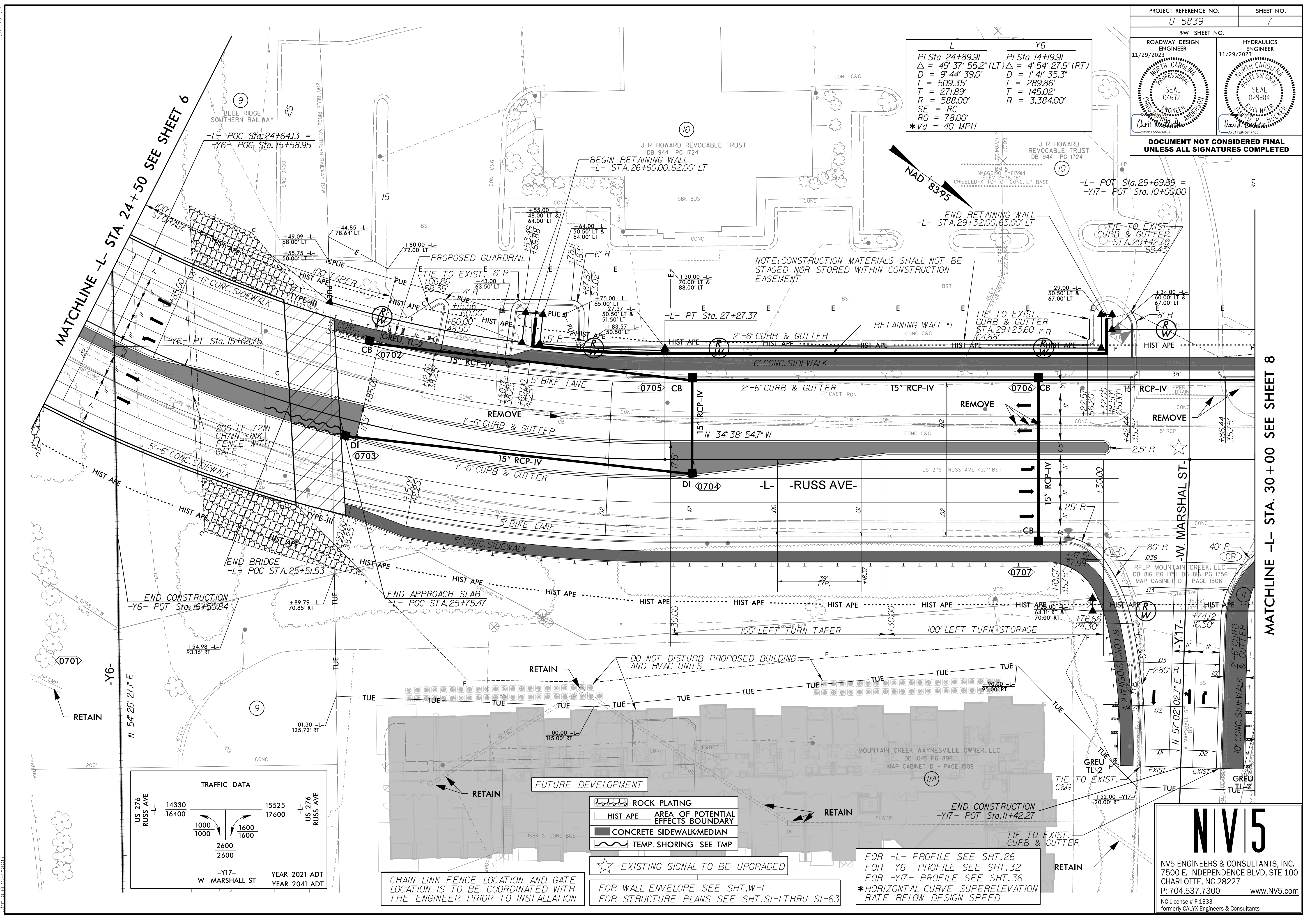


PROJECT REFERENCE NO. <b>U-5839</b>		SHEET NO. <b>7</b>	
RW SHEET NO.			
ROADWAY DESIGN ENGINEER 11/29/2023		HYDRAULICS ENGINEER 11/29/2023	
<b>DOCUMENT NOT CONSIDERED FINAL UNLESS ALL SIGNATURES COMPLETED</b>			

-L-	-Y6-
PI Sta 24+89.91	PI Sta 14+19.91
$\Delta = 49^{\circ} 37' 55.2''$ (LT)	$\Delta = 4^{\circ} 54' 27.9''$ (RT)
D = 9' 44' 39.0"	D = 1' 41' 35.3"
L = 509.35'	L = 289.86'
T = 271.89'	T = 145.02'
R = 588.00'	R = 3,384.00'
SE = RC	
RO = 78.00'	
*Vd = 40 MPH	



MATCHLINE -L- STA. 24+50 SEE SHEET 6

MATCHLINE -L- STA. 30+00 SEE SHEET 8

TRAFFIC DATA			
US 276 RUSS AVE -L-	14330 16400	15525 17600	-L- RUSS AVE
	1000 1000	1600 1600	
	2600 2600		
	-Y17- W MARSHALL ST		
	YEAR 2021 ADT YEAR 2041 ADT		

CHAIN LINK FENCE LOCATION AND GATE LOCATION IS TO BE COORDINATED WITH THE ENGINEER PRIOR TO INSTALLATION

- ROCK PLATING
  - HIST APE AREA OF POTENTIAL EFFECTS BOUNDARY
  - CONCRETE SIDEWALK/MEDIAN
  - TEMP. SHORING SEE TMP
  - EXISTING SIGNAL TO BE UPGRADED
- FOR WALL ENVELOPE SEE SHT. W-1  
FOR STRUCTURE PLANS SEE SHT. SI-1 THRU SI-63

FOR -L- PROFILE SEE SHT. 26  
FOR -Y6- PROFILE SEE SHT. 32  
FOR -Y17- PROFILE SEE SHT. 36  
\*HORIZONTAL CURVE SUPERELEVATION RATE BELOW DESIGN SPEED

NV5

NV5 ENGINEERS & CONSULTANTS, INC.  
7500 E. INDEPENDENCE BLVD, STE 100  
CHARLOTTE, NC 28227  
P: 704.537.7300 www.NV5.com

NC License # F-1333  
formerly CALYX Engineers & Consultants