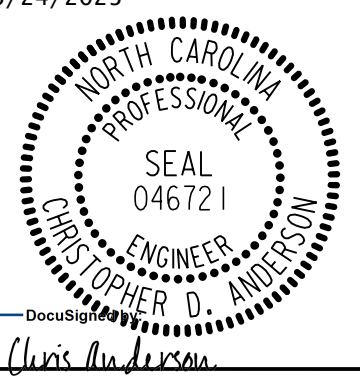


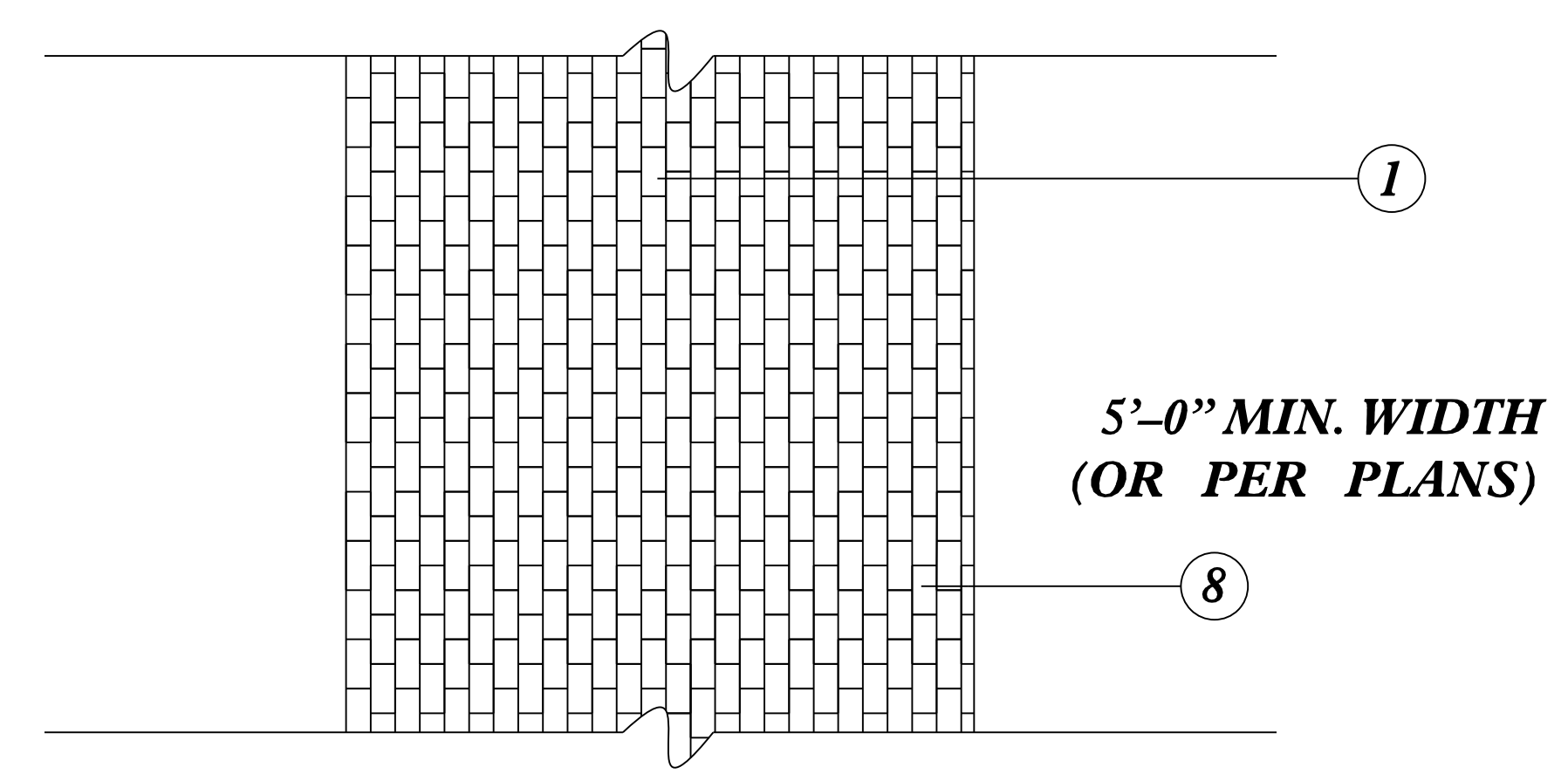
ORIGINAL BY: R.N. BRITT DATE: 7/8/15  
MODIFIED BY: R. L. CAREATHERS DATE: 3/3/23  
CHECKED BY: C. D. ANDERSON DATE: 3/3/23  
FILE SPEC.: w:jhowerton\Brick Paver Detail.dgn

8/17/23

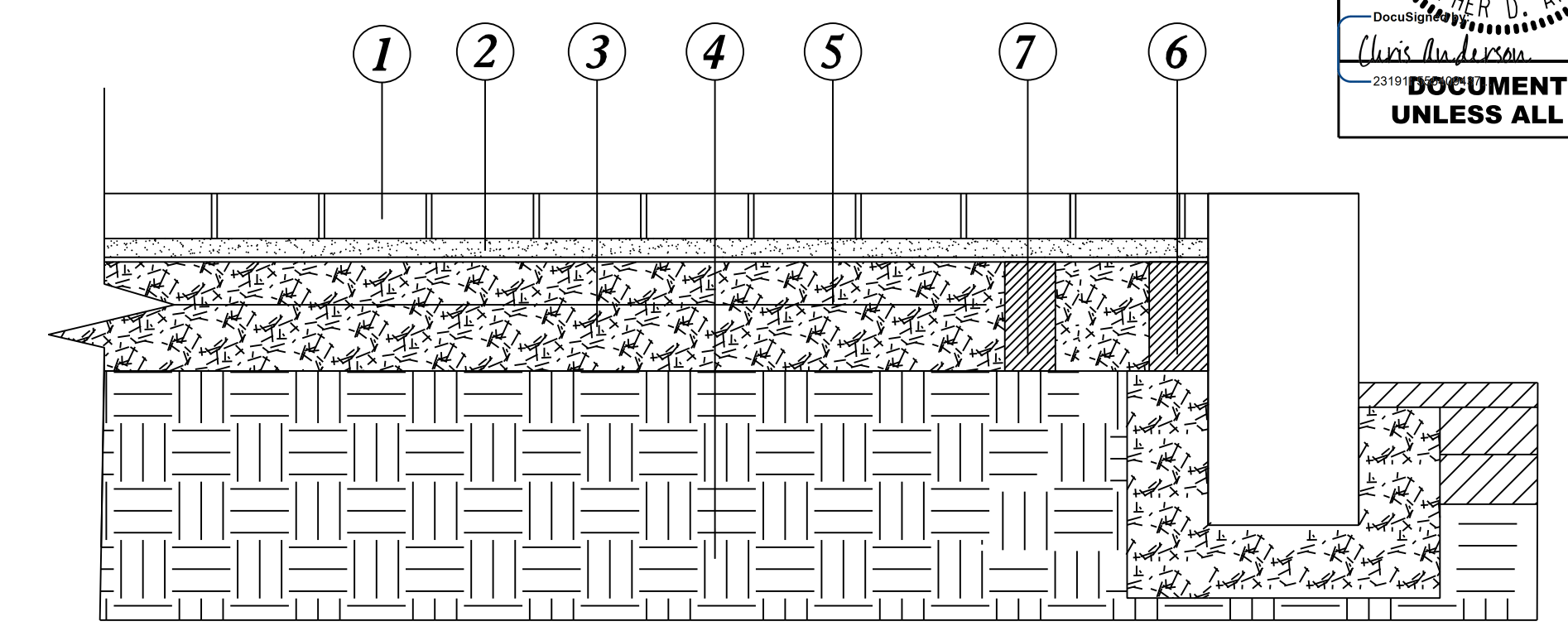
5/24/2023  
C:\projects\2015\2015103.01\CLIENT\Roadway\Proj\Brick Paver\_2B\_Sheet\U5839\_Brick Paver Detail.dgn

PROJECT REFERENCE NO. U-5839	SHEET NO. 2B-3
RW SHEET NO.	
ROADWAY DESIGN ENGINEER 5/24/2023	
	
<small>DocuSign 2019</small> <b>DOCUMENT NOT CONSIDERED FINAL UNLESS ALL SIGNATURES COMPLETED</b>	

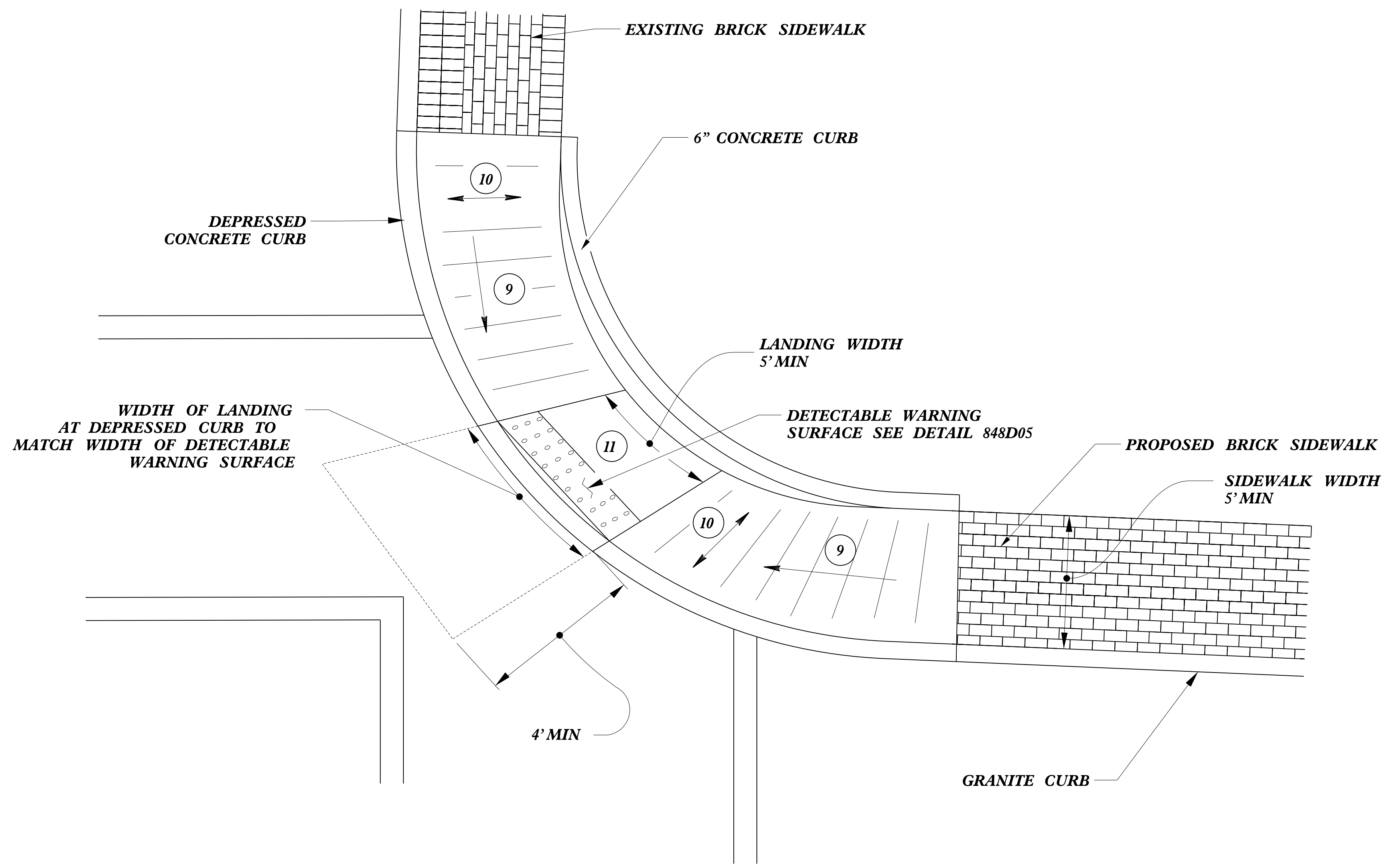
# BRICK PAVER DETAIL



**STANDARD CONDITION**



- 1 PAVER (SEE SPECIAL PROVISION FOR TYPE)
- 2 3/4" SAND SETTING BED CONFORMING TO ASTM C33 STANDARD SCREED AND COMPACTED AS REQUIRED
- 3 PROP. 4" FIBER REINFORCED CONCRETE BASE COURSE (4000 PSI) w/EXPANSION JOINT AT 25' O.C. AND AT VERTICAL WALLS.
- 4 COMPACTED ABC GRAVEL (MIN. 95% COMPACTION).
- 5 6" X 6" X W2.9 X W2.9 WELDED WIRE MESH
- 6 EXPANSION JOINT (BETWEEN CONCRETE SUB-SLAB AND CURB)
- 7 6-2" DIA. DRAIN HOLES, 12" O.C PARALLEL TO CURB - LOCATE AT LOWEST ELEV. FILL WITH PEA GRAVEL
- 8 PAVER PATTERN - RUNNING BOND, MATCH EXISTING
- 9 8.33% (12:1) MAX RAMP SLOPE
- 10 CROSS SLOPE: 2.00%
- 11 CURB RAMP REQUIRE A (4'-0") MINIMUM LANDING WITH A MAXIMUM CROSS SLOPE AND LONGITUDINAL SLOPE OF 2.00% WHERE PEDESTRIANS PERFORM TURNING MANEUVERS. SLOPE TO DRAIN TO CURB.



**N|V|5**

NV5 ENGINEERS & CONSULTANTS, INC.  
7500 E. INDEPENDENCE BLVD, STE 100  
CHARLOTTE, NC 28227  
P: 704.537.7300 www.NV5.com

NC License # F-1333  
formerly CALYX Engineers & Consultants