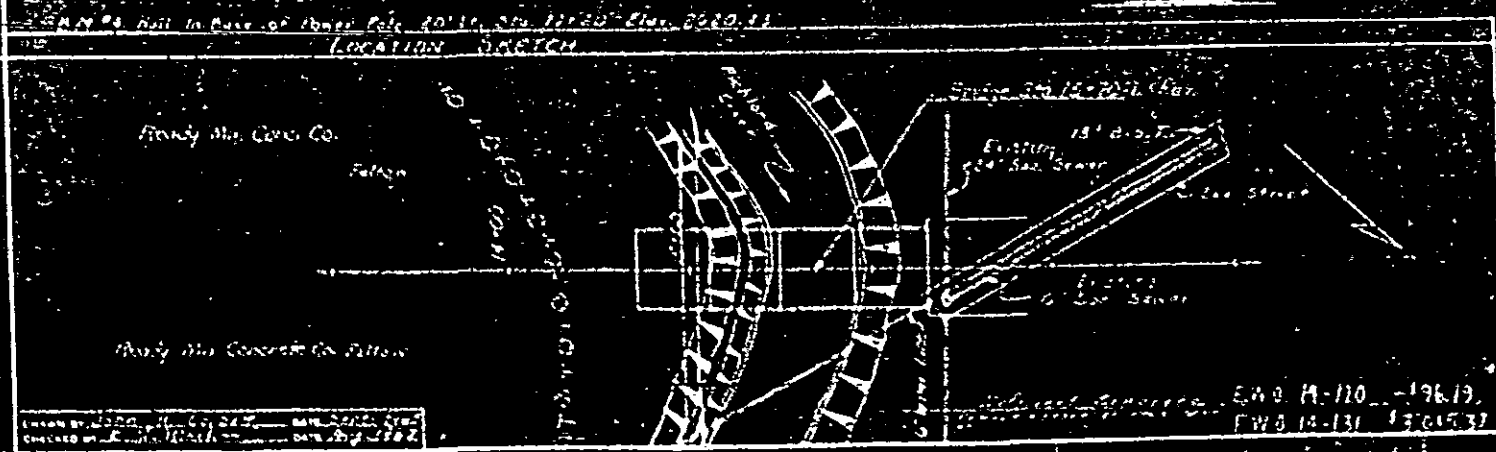


I hereby certify that this structure was built according to plans except as noted herein.

W. C. ...
 Resident Engineer

PLAN



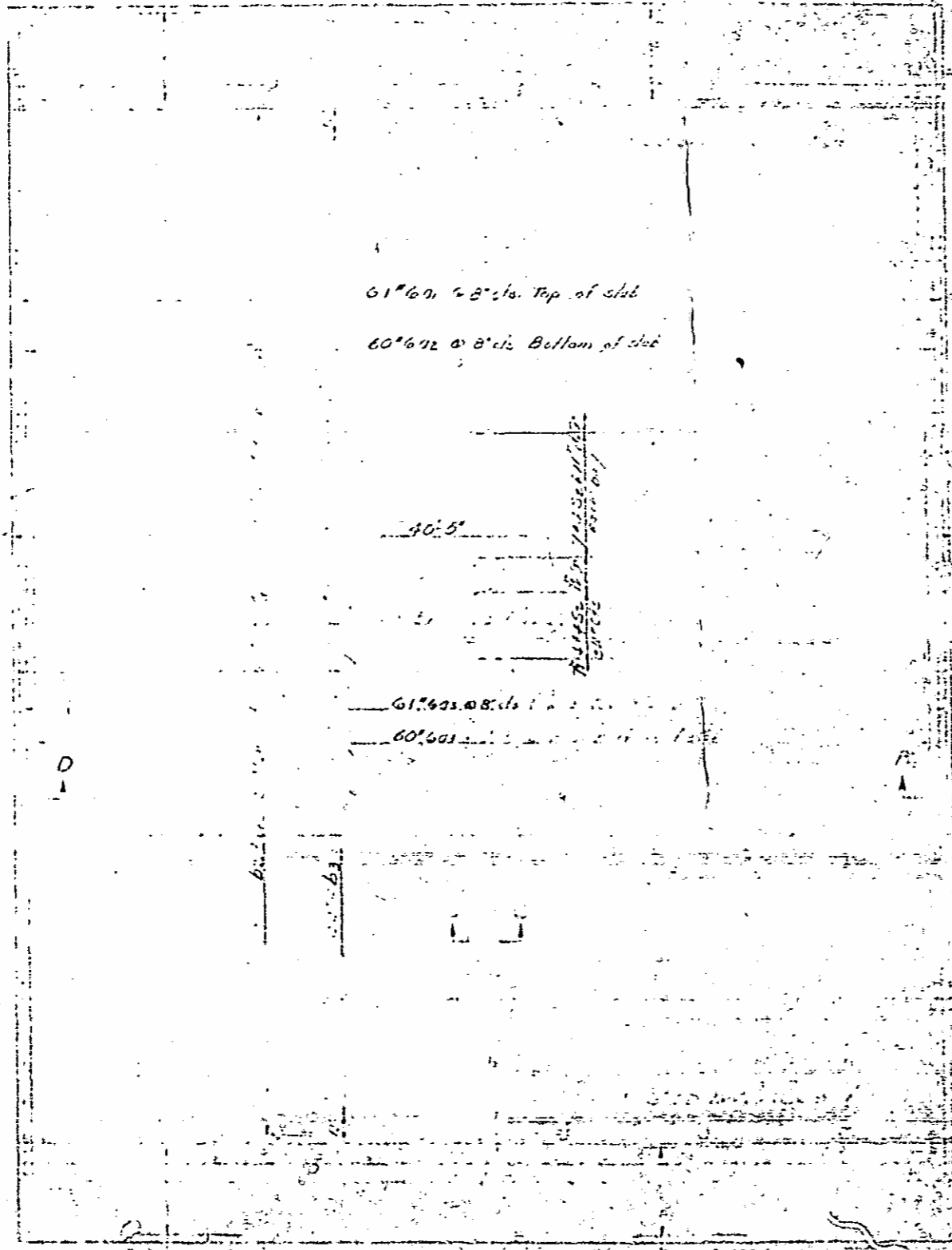
Note: Bent 1B revised to use pile caps. Concrete bridge, continuous with approach piers.
 All changes Bent 2, See Sheet 73.
 Revision #1 Quantities and drawings revised to reflect changes per AA 117170-2-111

TOTAL BILL OF MATERIALS

Span	Area	Vol	Wt	Cost	Unit	Cost	Unit	Cost	Unit	Cost
Span AA	13212.9104			20.8	cu yd					
Span B	15212.5104			11.7	cu yd					
Span C	15212.5104			11.7	cu yd					
Span D	15212.5104			11.7	cu yd					
Bent 1A	15212.5104			11.7	cu yd					
Bent 1B	15212.5104			11.7	cu yd					
Bent 1C	15212.5104			11.7	cu yd					
Bent 1D	15212.5104			11.7	cu yd					
Abutment	15212.5104			11.7	cu yd					
Approach	15212.5104			11.7	cu yd					
Subtotal				20.8	cu yd					
Total				20.8	cu yd					

PROJECT No. 117170
 HAYWOOD COUNTY
 STATION 15+72.1

STATE OF NORTH CAROLINA
STATE HIGHWAY COMMISSION
 GENERAL DRAWING
 1 - BENT 1B REVISION
 CECIL W. BRINLEY
 MANAGER ASST. B. PASS
 1965



61° 60' 08" Top of slab
 60° 60' 08" Bottom of slab

40' 5"

61° 60' 08"

60° 60' 08"

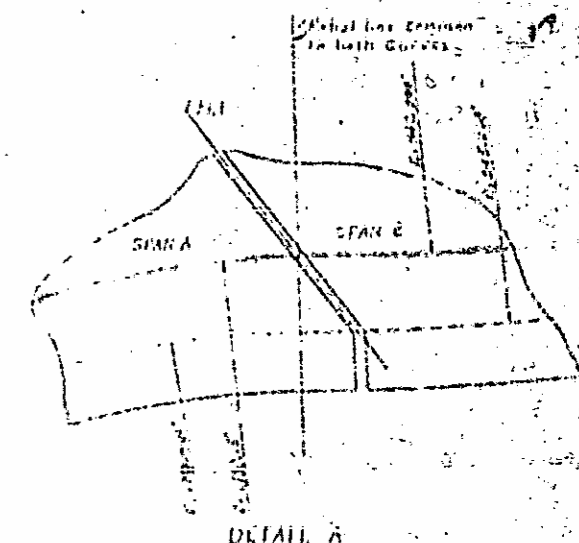
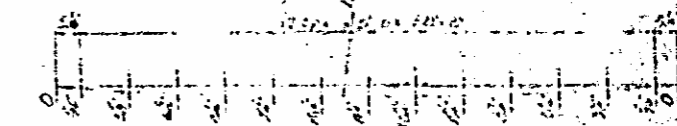
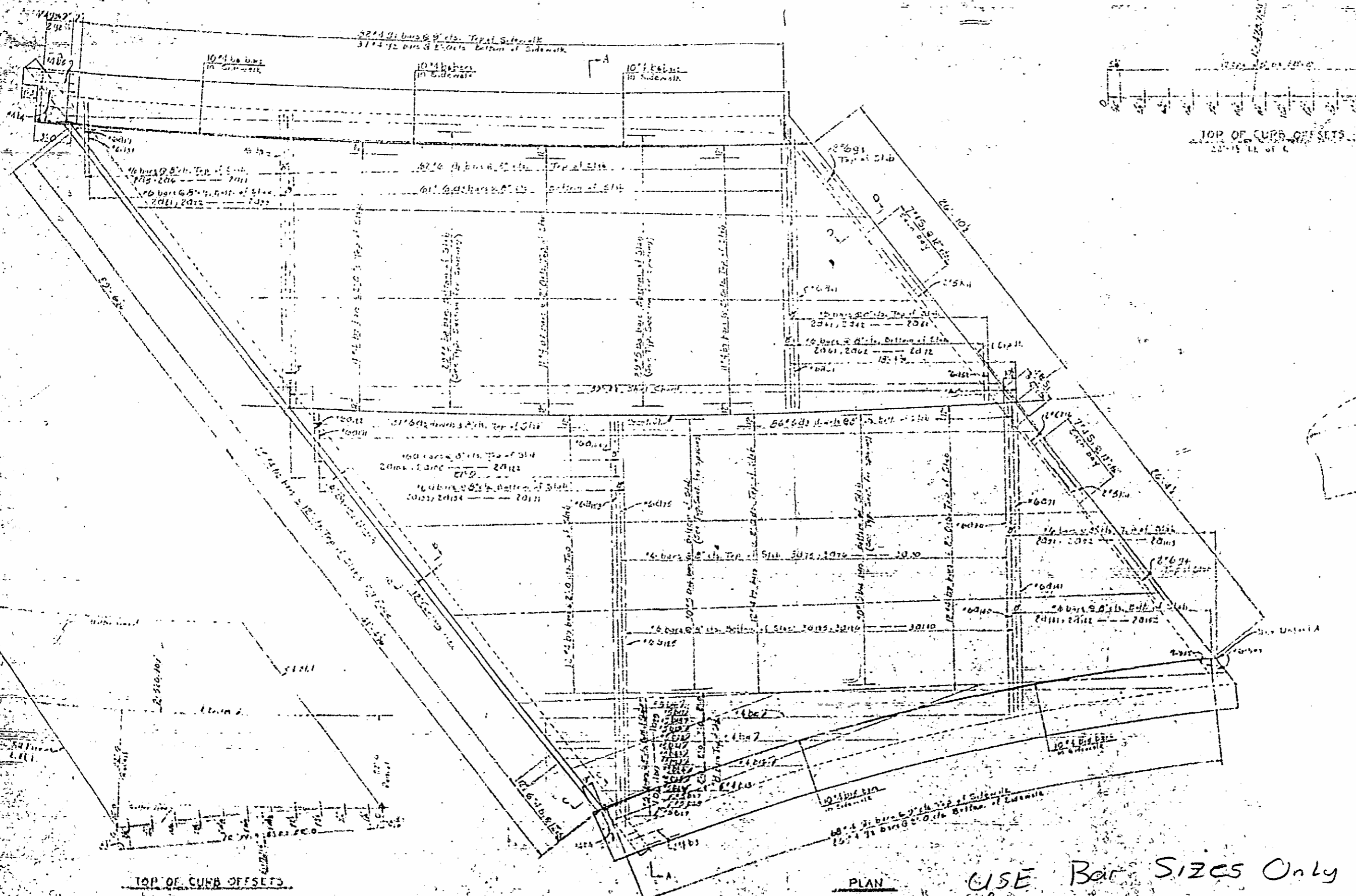
PROJECT NO. 112
 COUNTY
 STATION

STATE OF NORTH CAROLINA
STATE HIGHWAY COMMISSION
 DATE: 11/1/54
 DRAWN BY: J.P. [Signature]
 CHECKED BY: [Signature]

Revision 11. Add section D, change width of slab by 1/2" [Signature]

PP

DRAWN BY: J.P. [Signature]
 CHECKED BY: [Signature]



PROJECT NO. 8111703
 HAYWOOD COUNTY
 STATION 41+60.33 P.C.C. 4

STATE OF NORTH CAROLINA
STATE HIGHWAY COMMISSION
 DIVISION
 SUPERSTRUCTURE
 SPAN A

NO.	BY	DATE	NO.	BY	DATE
1			2		
3			4		

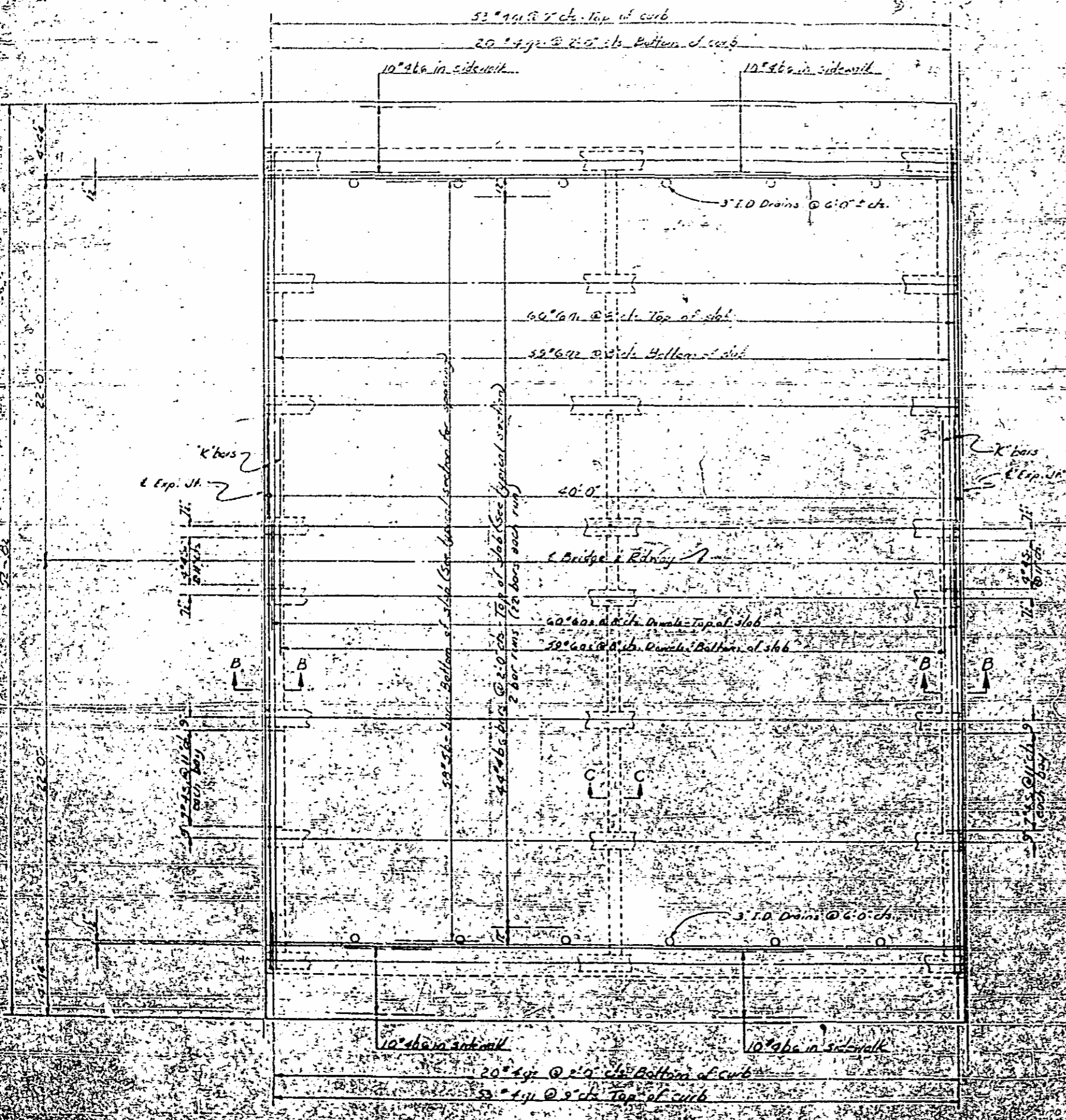
November 1966

PLAN

USE Bar Sizes Only
 from this Sheet

TOP OF CURB OFFSETS

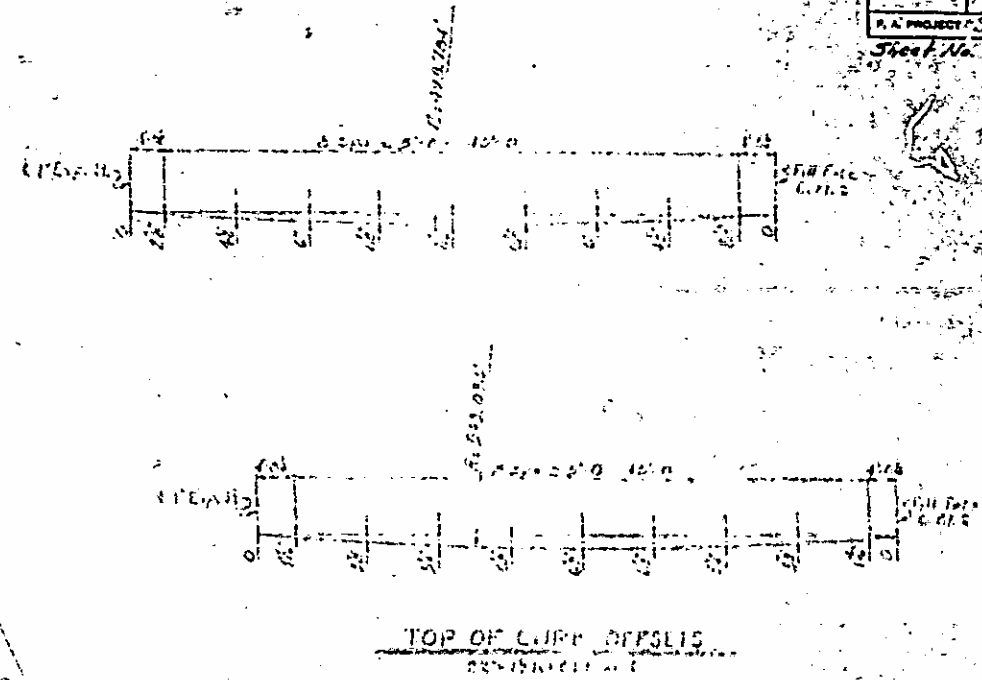
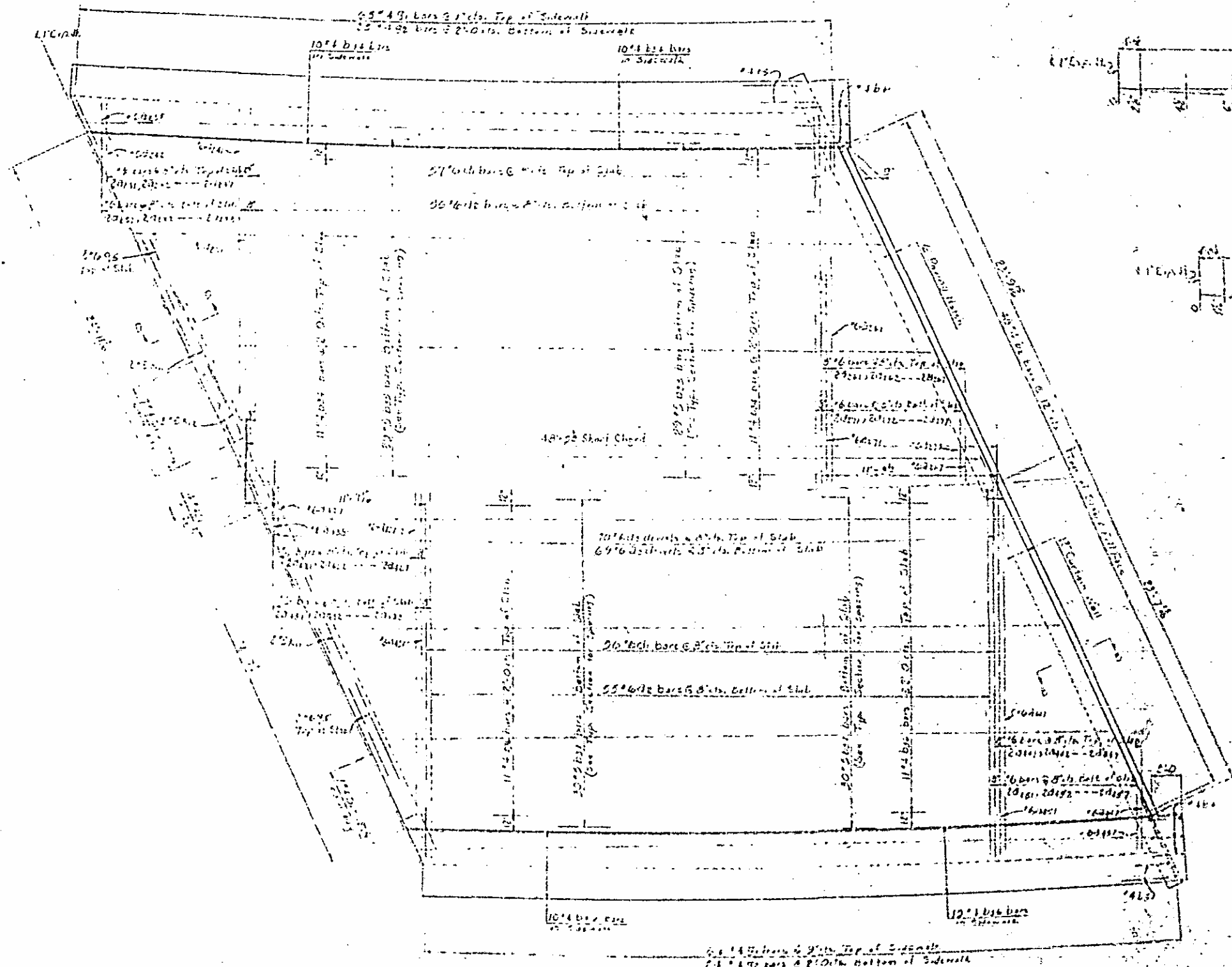
FED. ROAD DIST. NO. 2 STATE PROJECT NO. 4124703
 F.A. PROJECT NO. 307620(3)R
 Sheet No. 601



PROJECT NO. B124703
 HAYWARD COUNTY
 STATION 15+70.68

STATE HIGHWAY COMMISSION
 SUPERSTRUCTURE
 SPAN B

DATE	BY	CHKD	APP'D	REVISION



PLAN

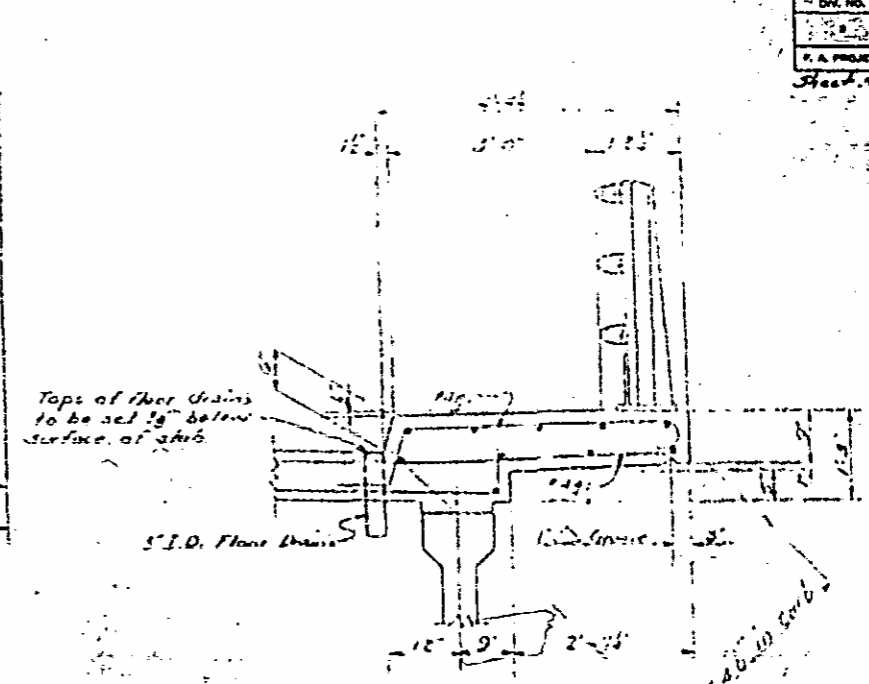
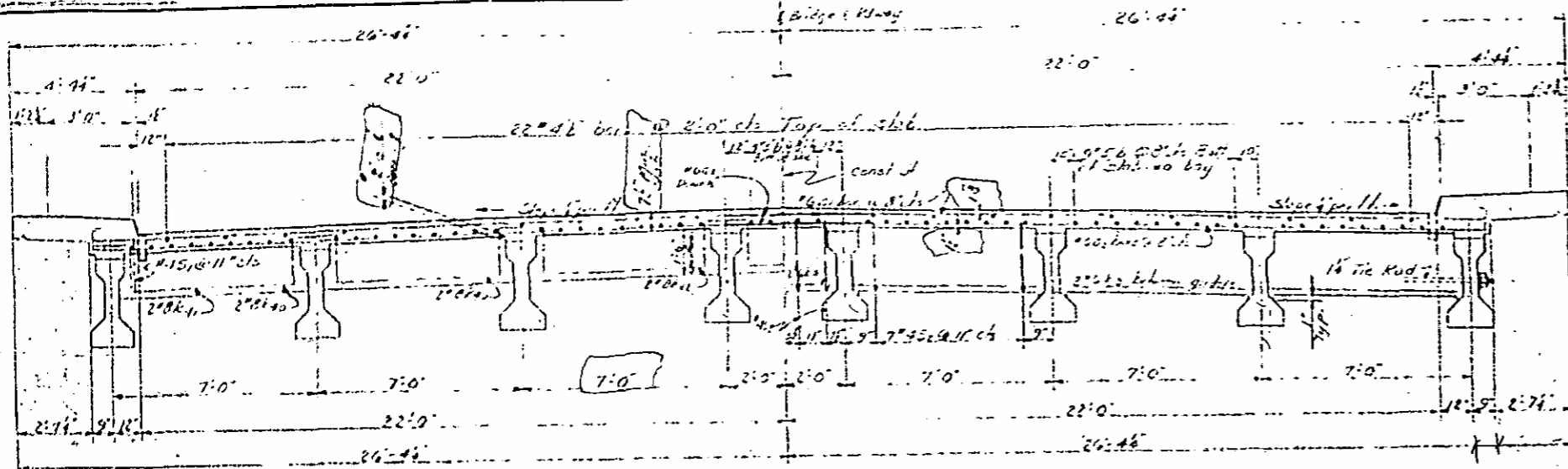
Use Bar Sizes
Only from this
Sheet

PROJECT NO. 8.19.1703
 HAYWOOD COUNTY
 STATION 0+11.02 P.C. +1

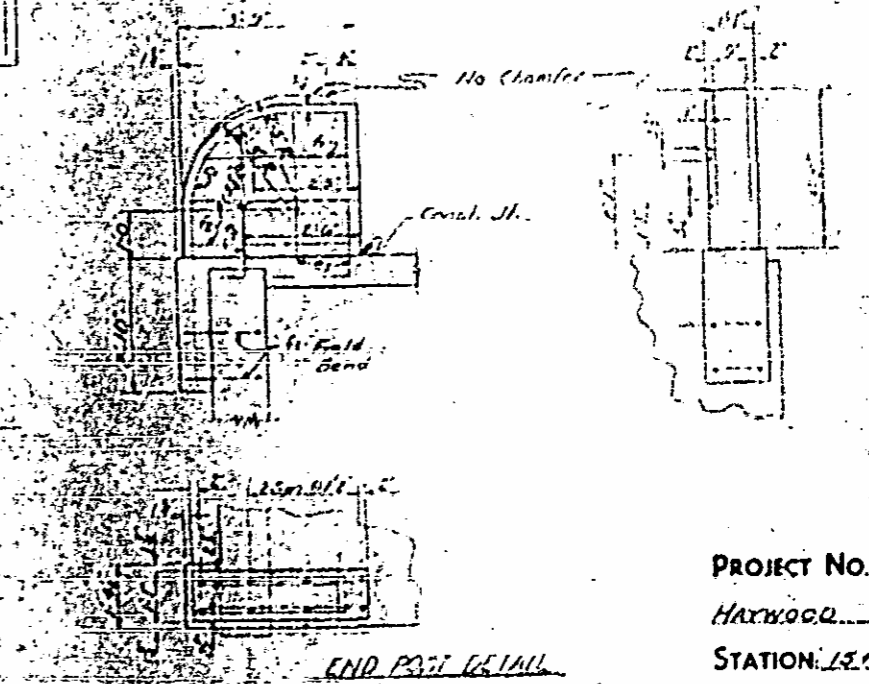
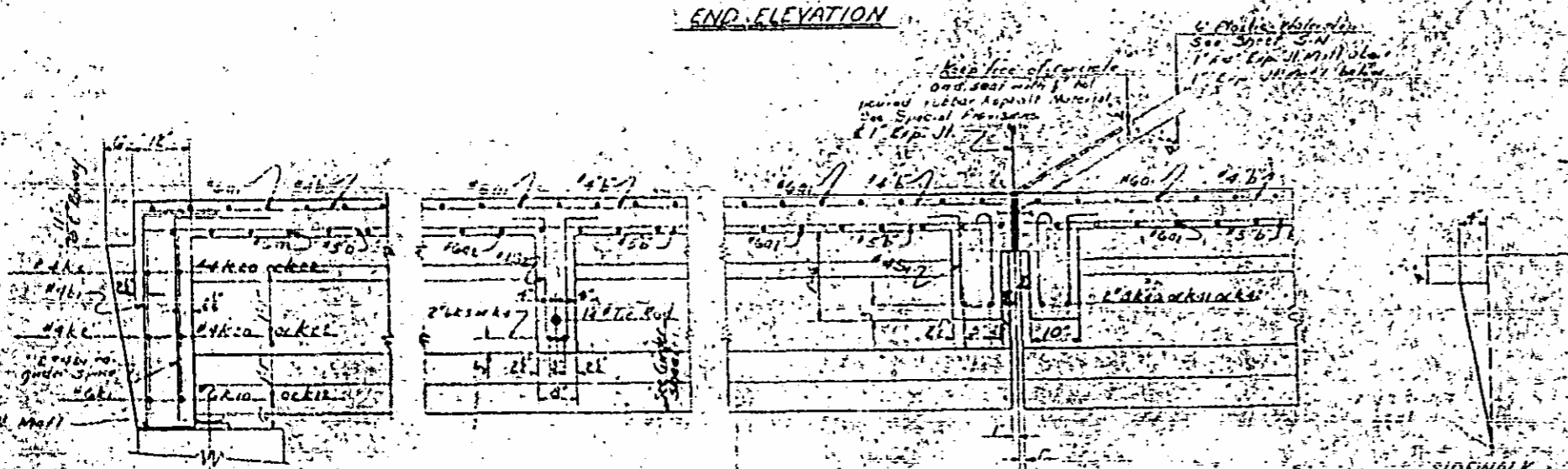
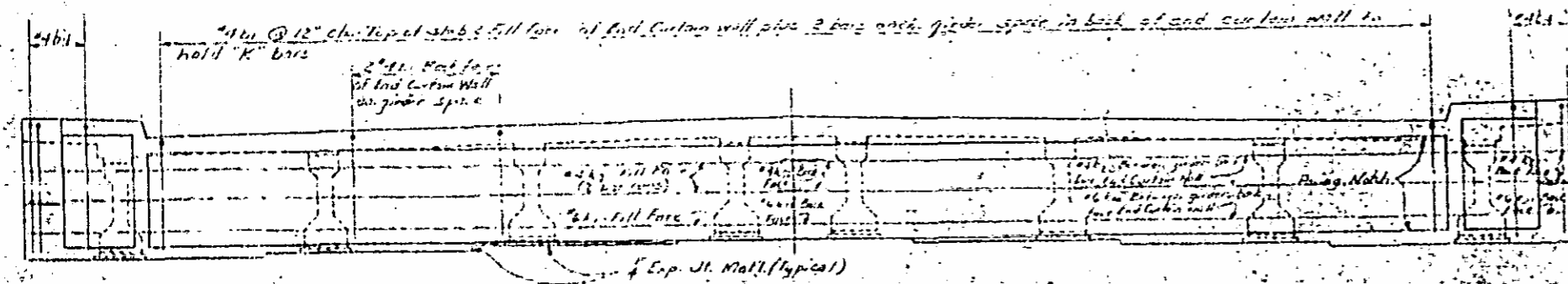
STATE OF NORTH CAROLINA
STATE HIGHWAY COMMISSION
 DIVISION OF STRUCTURES
 SHEET NO. 41 OF 122

NO.	BY	DATE	NO.	BY	DATE
1			2		
3			4		

SCALE: 1/4" = 1'-0"



* Dimension varies along girder



PROJECT No. 81241703
 HAYWOOD COUNTY
 STATION 15+20 I.B.M.

DEAD LOAD DEFLECTION

	SPAN AA, B, & C	
	Exaggerated 10x	
Consider Girders alone in place...	5	5
Deflection due to superimposed D.L.	4	4
Floor Chamber	1	1
Vertical Curve Ordinate	5	5

Temporary struts shall be placed between superstructure adjacent to the diaphragms and the ribs on the ends shall be fully supported before the diaphragms are struts shall remain in place 3 days after the ribs are in place and shall be removed after the struts have been removed.

Drain should be plastic pipe meeting the minimum requirement of 45 P.M. D 1185 '66 T.

FLOOR DOWN DETAIL

STATE OF NORTH CAROLINA
STATE HIGHWAY COMMISSION
 BALEON
SUPERSTRUCTURE SECTIONS & DETAILS

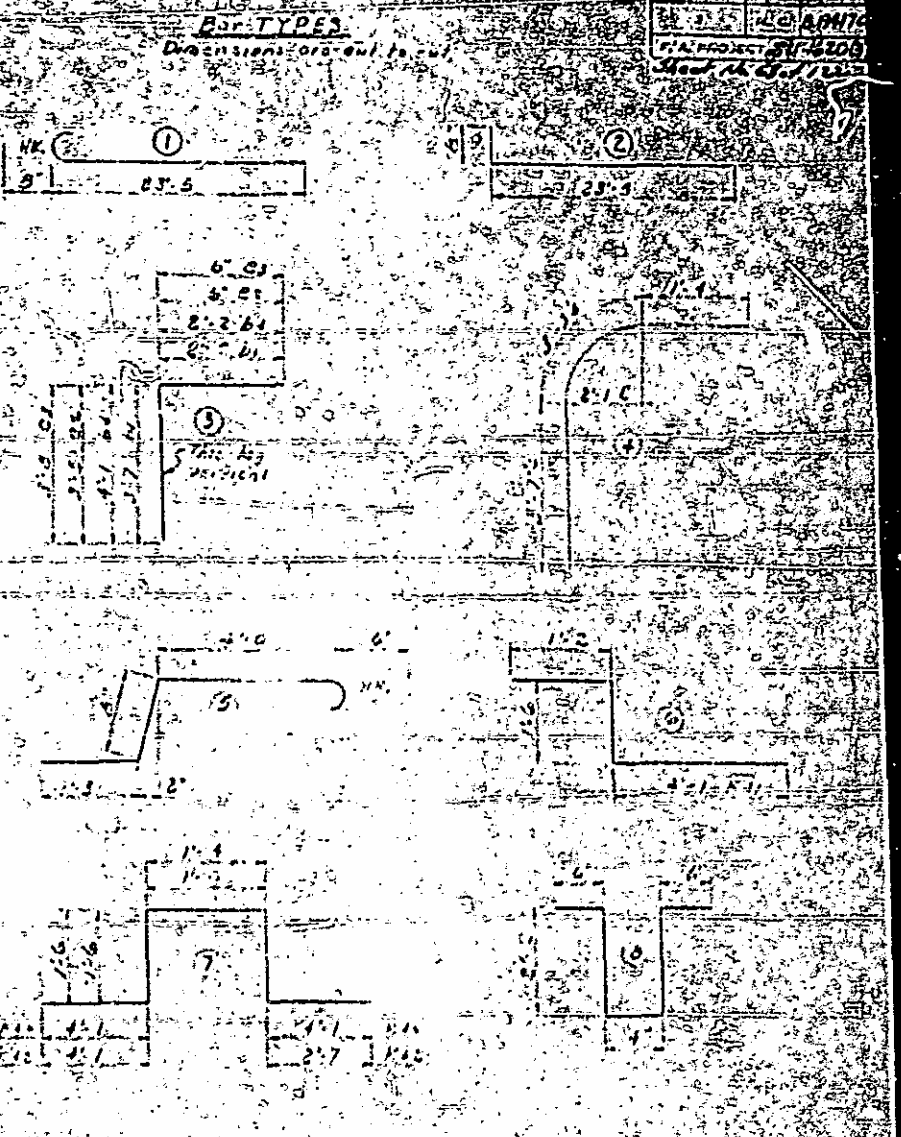
September 1965

REVISIONS					
NO.	BY	DATE	NO.	BY	DATE
1	JP	11/10/65	1		

Sheet 5 of 25
 30/2

Added Span AA to Dead Load Deflection table & change No. of drains by J.P. V.B.T.

SPAN AA					SPAN A					SPAN B					SPAN C													
BAR NO.	SIZE	TYPE	LENGTH	WEIGHT	BAR NO.	SIZE	TYPE	LENGTH	WEIGHT	BAR NO.	SIZE	TYPE	LENGTH	WEIGHT	BAR NO.	SIZE	TYPE	LENGTH	WEIGHT	BAR NO.	SIZE	TYPE	LENGTH	WEIGHT				
Q1 122	6	Str	24.1	443	Q1 122	6	Str	24.1	443	Q1 120	6	Str	24.1	434	Q1 122	6	Str	24.1	443									
Q2 120	6	Str	24.1	434	Q2 120	6	Str	24.1	434	Q2 118	6	Str	24.1	426	Q2 120	6	Str	24.1	434									
Q3 121	6	Str	4.6	818	Q3 121	6	Str	4.6	818	Q3 112	6	Str	4.6	804	Q3 121	6	Str	4.6	818									
B1 59	4	Str	5.9	227	B2 58	5	Str	40.0	2420	B5 58	5	Str	37.8	2400	B1 59	4	Str	5.9	227									
B7 28	5	Str	40.5	2445	B5 58	5	Str	40.0	2420	B5 58	5	Str	37.8	2400	B2 58	5	Str	40.0	2420									
B8 24	4	Str	20.1	1174	B5 58	5	Str	20.8	1160	B5 58	5	Str	20.6	1150	B3 24	4	Str	20.8	1160									
B4 6	4	Str	3.7	163						B5 58	5	Str	20.6	1150	B4 6	4	Str	3.7	163									
C1 4	4	Str	0.3	22						B5 58	5	Str	20.6	1150	C1 4	4	Str	0.3	22									
C2 4	4	Str	3.1	10						B5 58	5	Str	20.6	1150	C2 4	4	Str	3.1	10									
B1 8	4	Str	4.2	22						B5 58	5	Str	20.6	1150	C3 8	4	Str	4.2	22									
F1 4	4	Str	3.1	8						B5 58	5	Str	20.6	1150	F1 4	4	Str	3.1	8									
F2 16	4	Str	3.5	37						B5 58	5	Str	20.6	1150	F2 16	4	Str	3.5	37									
G1 110	4	Str	6.5	471	G1 108	4	Str	4.0	109	G1 106	4	Str	6.5	454	G1 106	4	Str	6.5	454									
G2 10	4	Str	4.0	109	G2 10	4	Str	4.0	109	G2 10	4	Str	4.0	109	G2 10	4	Str	4.0	109									
K1 1	6	Str	52.4	79						G1 106	4	Str	6.5	454	K1 1	6	Str	52.4	79									
K2 4	4	Str	26.10	72						G2 10	4	Str	4.0	109	K2 4	4	Str	26.10	72									
K3 12	6	Str	6.2	111	K3 12	6	Str	6.2	111	K3 12	6	Str	6.2	111	K3 12	6	Str	6.2	111									
K4 2	6	Str	3.2	10	K4 2	6	Str	3.2	10	K4 2	6	Str	3.2	10	K4 2	6	Str	3.2	10									
K5 6	6	Str	5.2	47						K4 2	6	Str	3.2	10	K5 6	6	Str	5.2	47									
K6 2	6	Str	2.3	7						K5 6	6	Str	5.2	47	K6 2	6	Str	2.3	7									
K7 1	6	Str	2.2	3						K6 2	6	Str	2.3	7	K7 1	6	Str	2.2	3									
K8 10	6	Str	5.8	45						K7 1	6	Str	2.2	3	K8 10	6	Str	5.8	45									
K9 4	4	Str	2.6	7						K8 10	6	Str	5.8	45	K9 4	4	Str	2.6	7									
K10 2	4	Str	2.8	4						K9 4	4	Str	2.6	7	K10 2	4	Str	2.8	4									
K11 8	8	Str	12.6	217						K10 2	4	Str	2.8	4	K11 8	8	Str	12.6	217									
K12 4	8	Str	6.9	114						K11 8	8	Str	12.6	217	K12 4	8	Str	6.9	114									
K13 8	8	Str	11.0	235						K12 4	8	Str	6.9	114	K13 8	8	Str	11.0	235									
S1 46	4	Str	4.6	277						K13 8	8	Str	11.0	235	S1 46	4	Str	4.6	277									
S2 46	4	Str	5.8	174						S1 46	4	Str	4.6	277	S2 46	4	Str	5.8	174									



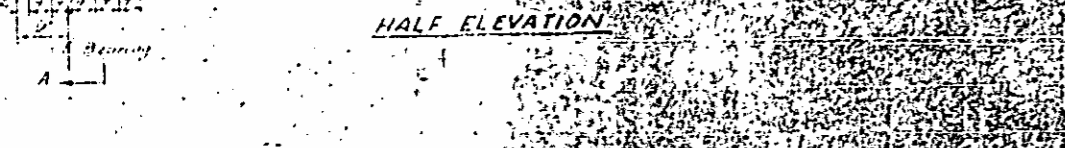
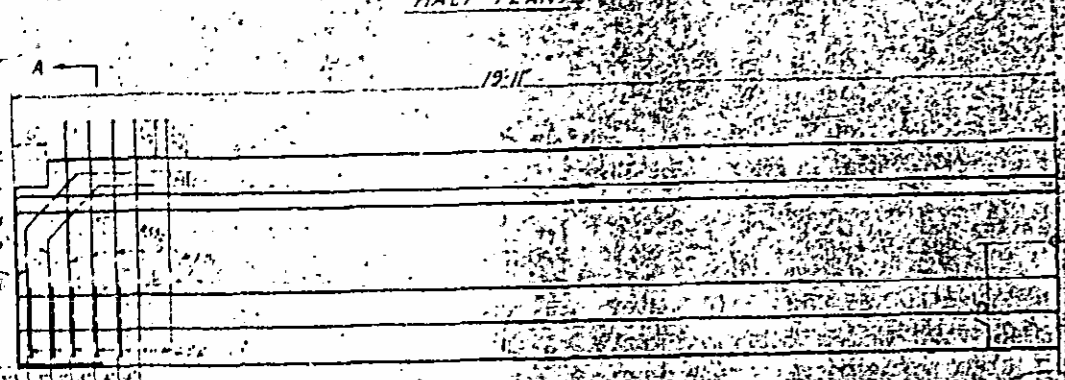
PROJECT NO. 3121110
 HAYWOOD COUNTY
 STATION 15+10

STATE OF NORTH CAROLINA
 STATE HIGHWAY COMMISSION
 SUPERSTRUCTURE
 BILL OF MATERIAL
 March 1968

Revision No. 1 - Adding Span AA and adjusting quantities in SF & WT.

19:11

1-10	6	17.45 @ 6.0 c/s	6.45 @ 14 c/s
1-10	6	17.45 @ 6.0 c/s	6.45 @ 14 c/s



End of Beam

(2.71) (typical)			

DIAPHRAGM LAYOUT

AA	AA		
BB	BB		
CC	CC		
DD	DD		
EE	EE		
FF	FF		
GG	GG		
HH	HH		
II	II		
JJ	JJ		

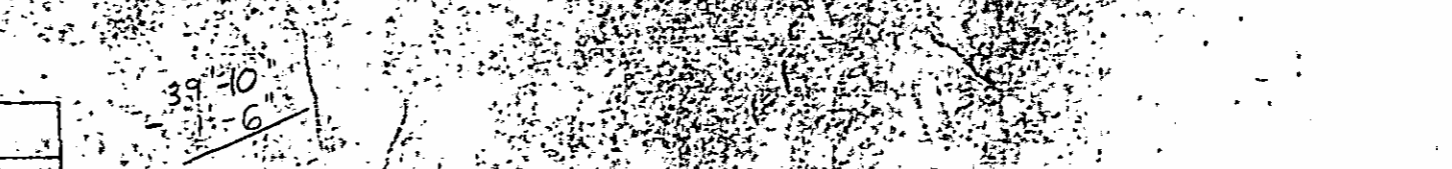
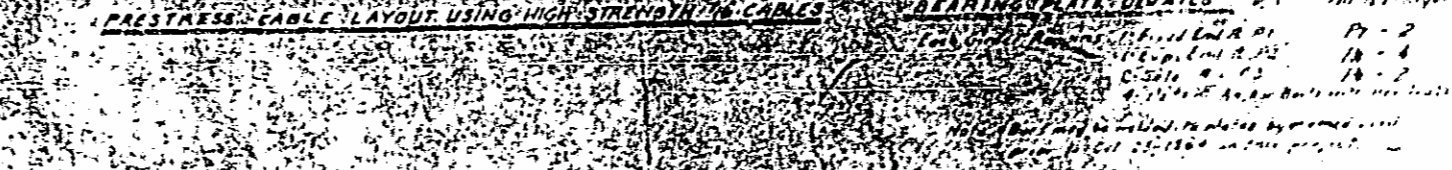
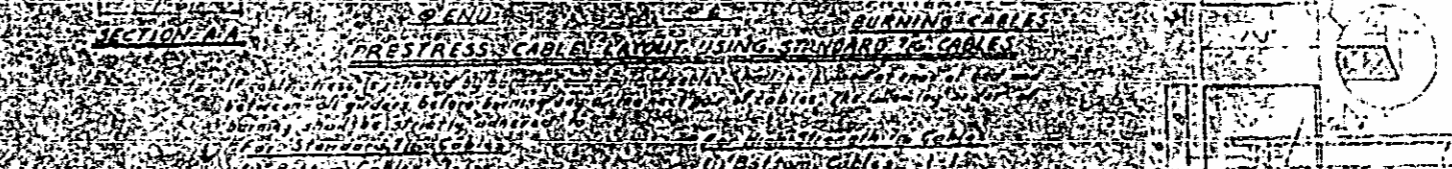
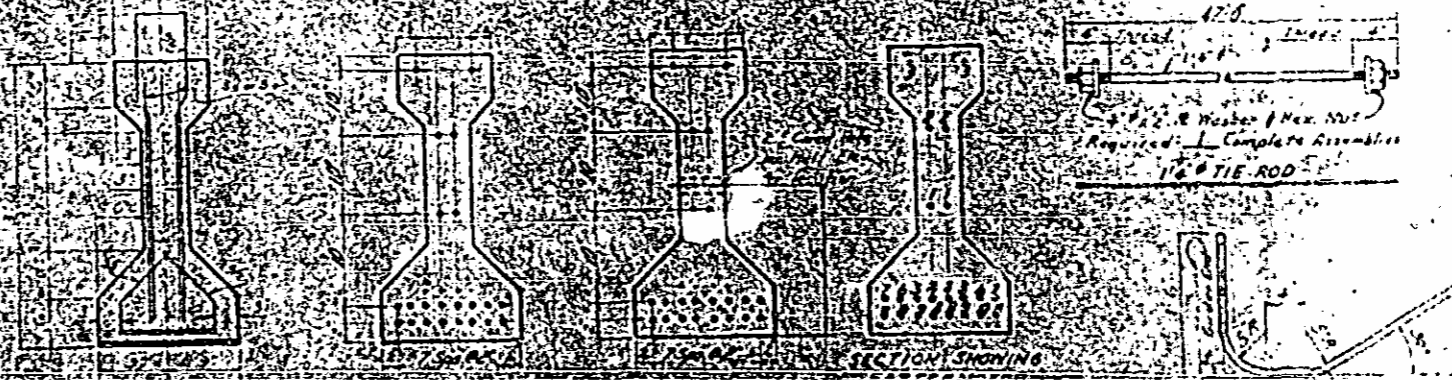
BEARING PLATE LAYOUT

QUANTITIES FOR ONE GIRDER

Reinforcing Steel	5000 psi Concrete	Standard Iron Strength
255	18	22

REINFORCING STEEL FOR ONE GIRDER

Bar No.	Size	Type	Length	Weight
S1	#4	ST-1	13.22	1.22
S2	#4	ST-1	13.22	1.22
S3	#4	ST-1	13.22	1.22
S4	#4	ST-1	13.22	1.22
S5	#4	ST-1	13.22	1.22
S6	#4	ST-1	13.22	1.22
S7	#4	ST-1	13.22	1.22
S8	#4	ST-1	13.22	1.22
S9	#4	ST-1	13.22	1.22
S10	#4	ST-1	13.22	1.22
S11	#4	ST-1	13.22	1.22
S12	#4	ST-1	13.22	1.22
S13	#4	ST-1	13.22	1.22
S14	#4	ST-1	13.22	1.22
S15	#4	ST-1	13.22	1.22
S16	#4	ST-1	13.22	1.22
S17	#4	ST-1	13.22	1.22
S18	#4	ST-1	13.22	1.22
S19	#4	ST-1	13.22	1.22
S20	#4	ST-1	13.22	1.22
S21	#4	ST-1	13.22	1.22
S22	#4	ST-1	13.22	1.22
S23	#4	ST-1	13.22	1.22
S24	#4	ST-1	13.22	1.22
S25	#4	ST-1	13.22	1.22
S26	#4	ST-1	13.22	1.22
S27	#4	ST-1	13.22	1.22
S28	#4	ST-1	13.22	1.22
S29	#4	ST-1	13.22	1.22
S30	#4	ST-1	13.22	1.22



GIRDERS REQUIRED

18	39'0"	318'8"
----	-------	--------

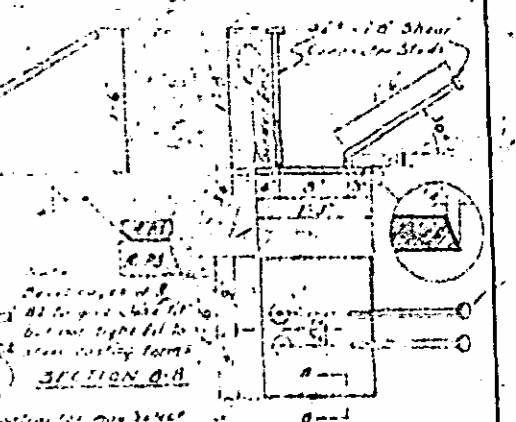
NOTES

All prestressing strands shall meet the requirements of AASHTO A-416.

Cables to be cut off flush with end of girder. No surface finish will be required for prestressed concrete girders. However the outside face of the exterior girders shall be carefully cleaned at erection and after disencasement. See Specification.

All prestressing strands shall be 7/16" diameter galvanized cables in accordance with the provisions of AASHTO A-416. However the contractor may use either of the two types of cables listed below. However all cables used on girders shall be of the same type.

TYPE 1 GALV. ULTIMATE STR. RATED PRESTRESS
 15.5% GALV. 17000 lbs/strand 15.5% GALV. 17000 lbs/strand
 15.5% GALV. 17000 lbs/strand 15.5% GALV. 17000 lbs/strand

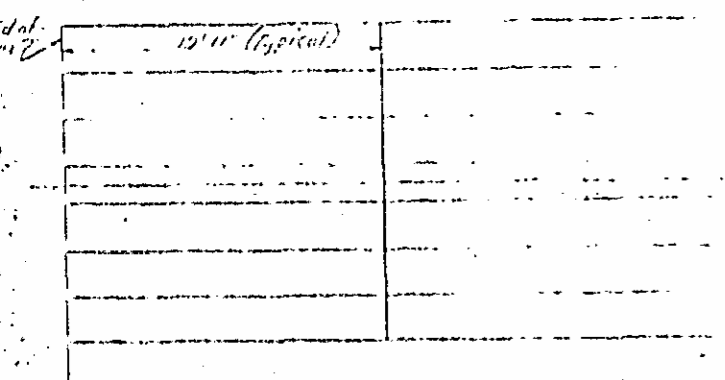
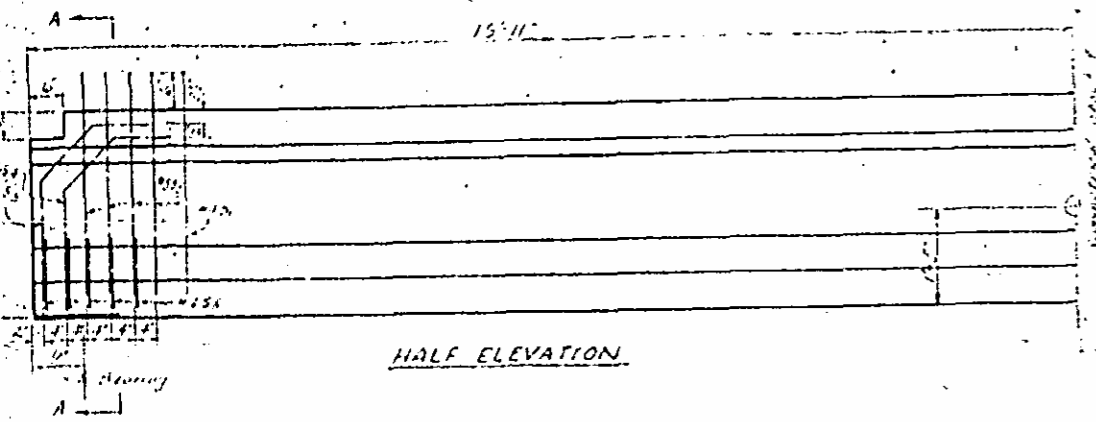
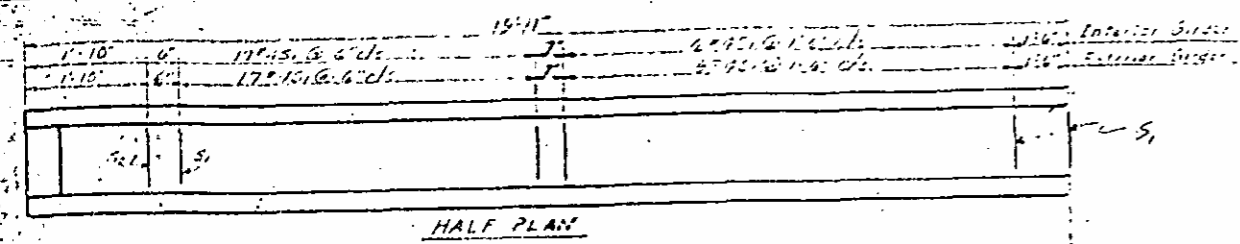


EMBEDDED PLATE IN CONCRETE (see specification)

Note: Bearing plates, including expansion portion of the bearing and base plate, see to be painted as required for structural steel. Also, the bearing plate shall be painted with a white lead and bottom, 300 sq. ft. of paint.

PROJECT NO. 81241703
 HAYWOOD COUNTY
 STATION 15+70 - L. Rev.

STATE OF NORTH CAROLINA
STATE HIGHWAY COMMISSION
 DIVISION OF
**FOR SPAN 44
 STANDARD
 36" PRESTRESSED
 CONCRETE GIRDER**
 FEBRUARY, 1965



BA	BA	BA	BA	BA
BA	BA	BA	BA	BA
BA	BA	BA	BA	BA
BA	BA	BA	BA	BA
BA	BA	BA	BA	BA
BA	BA	BA	BA	BA
BA	BA	BA	BA	BA
BA	BA	BA	BA	BA
BA	BA	BA	BA	BA

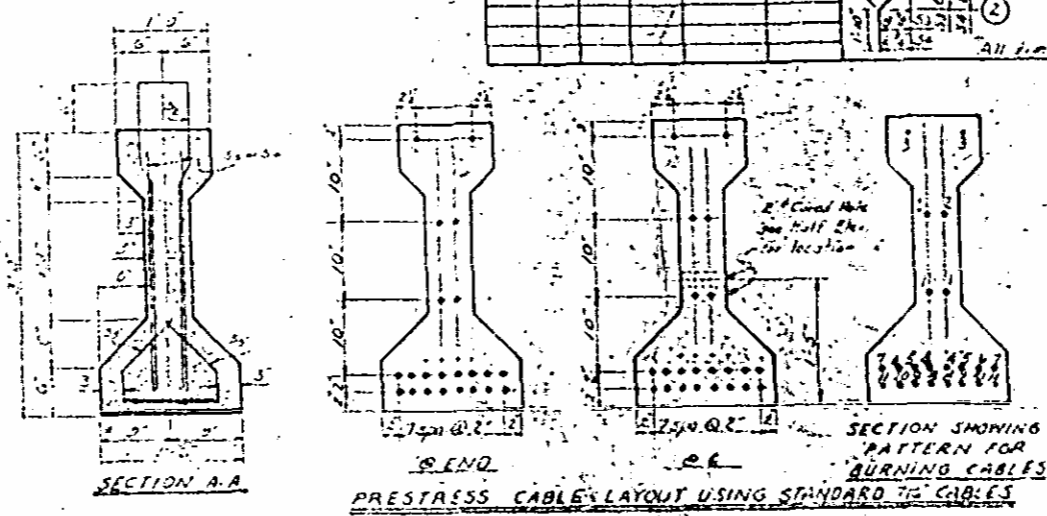
REINFORCING STEEL LAYOUT

REINFORCING STEEL FOR ONE GIRDER

Bar No.	Size	Type	Length	Weight
51	#4	1	7'-1"	2.2
52	#4	1	7'-1"	2.2
53	#5	1	7'-1"	3.2
54	#6	2	3'-0"	2.2
55	#6	2	3'-0"	2.2
56	#4	5	2'-4"	3.1

BAR TYPES

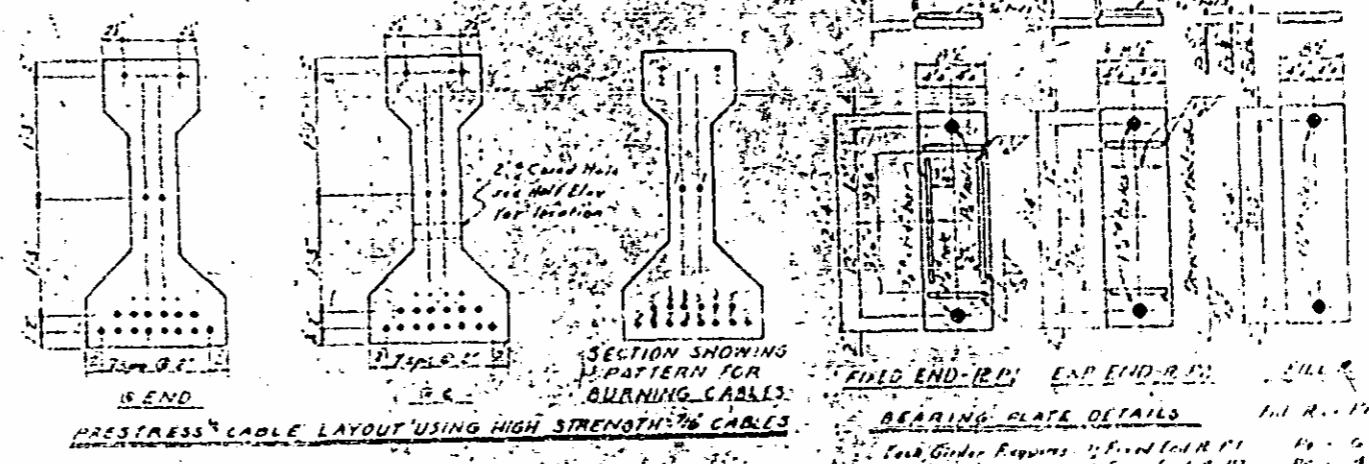
All dimensions are out to out.



Note: If cable stress is released by burning, each pair of cables shall be burned at ends at bed and between all girders before burning any of the rest part of cables. The following order of burning shall be strictly adhered to:

For Standard 7/16 Cables
(1) Cables 1, 2, 1, 1 thru 11, 11.

For High Strength 7/16 Cables
(1) Cables 1, 2, 1, 1 thru 9, 9.



Note: Bars may be welded to plates by means of...
...to A.C.I. 308, 1964, and other codes.

QUANTITIES FOR ONE GIRDER

Reinforcing Steel	5000 psi Concrete	Standard High Strength 7/16 Cables
355	3.5	22

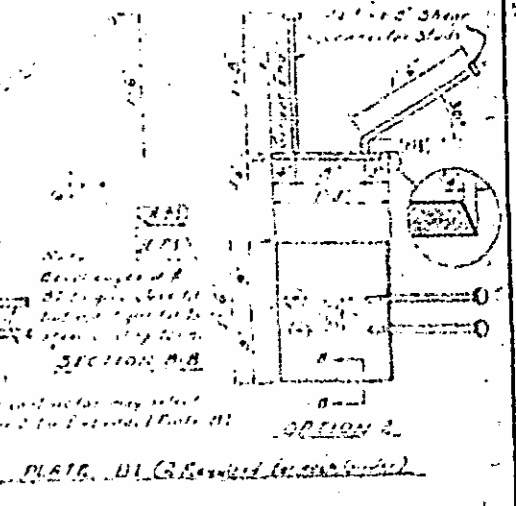
GIRDERS REQUIRED

No.	Length	Total Length
25	35'-10"	895'

PROJECT NO. 61541703
COUNTY
STATION

STATE OF NORTH CAROLINA
STATE HIGHWAY COMMISSION
FEBRUARY, 1965

STANDARD 36" PRESTRESSED CONCRETE GIRDER

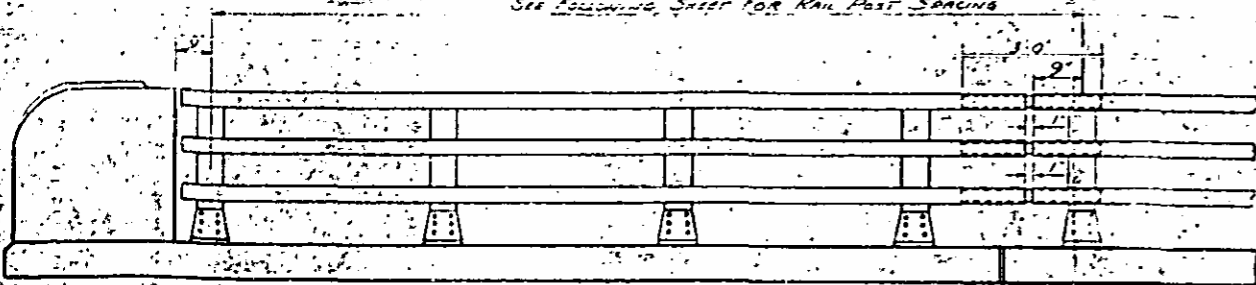


Note: Bearing plates, including exposed portion of the bearing area, shall be painted as required for structural steel. The steel shall be painted with red lead primer and two coats of black paint. The steel shall be painted with white zinc rich primer and two coats of black paint. See Specification for Steel and Painting.

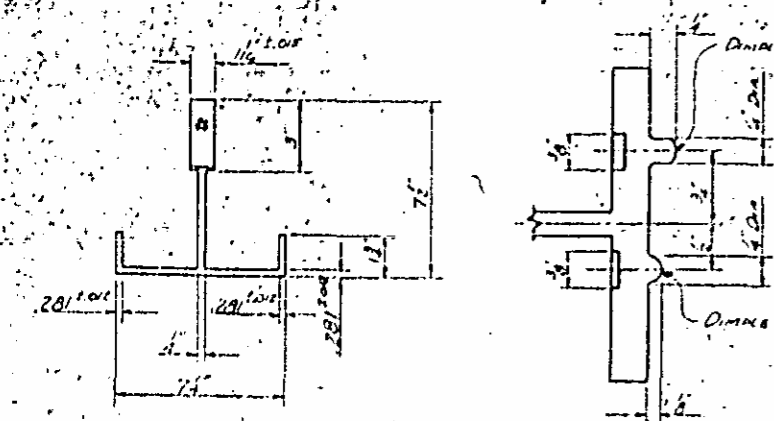
SPECIAL
Approved by: [Signature]
Checked by: [Signature]

DATE: 2/23/65
30

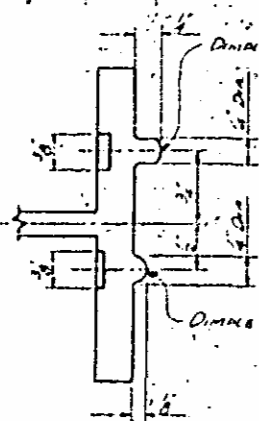
See following sheet for Rail Post Spacing



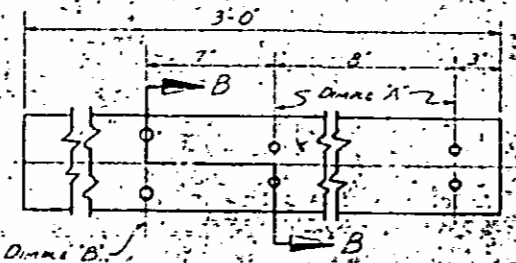
ELEVATION
 SPAN AA
 Exp. 1/4



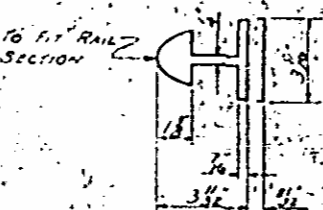
PLAN



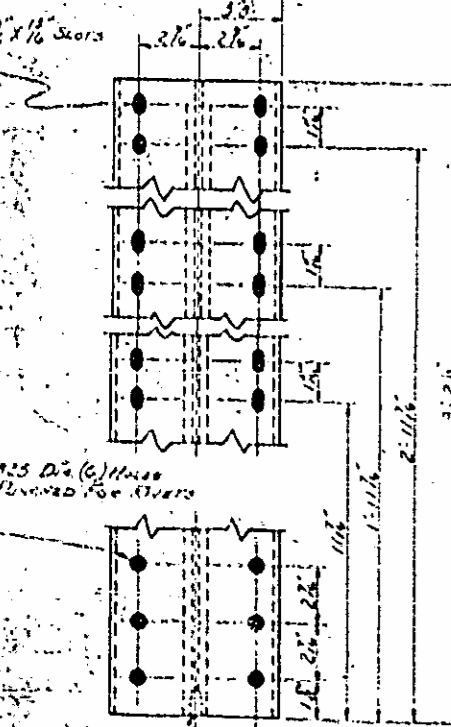
SECTION B-B



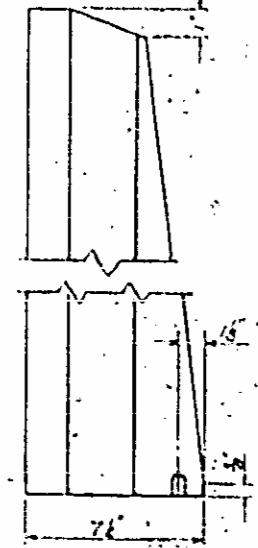
BACK-ELEVATION



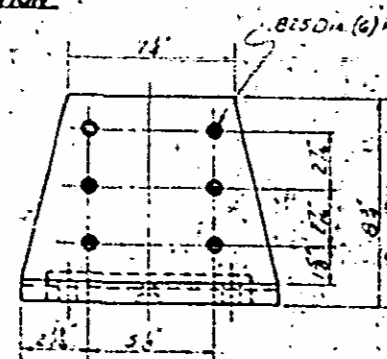
BAR SECTION
 EXPANSION BAR DETAILS



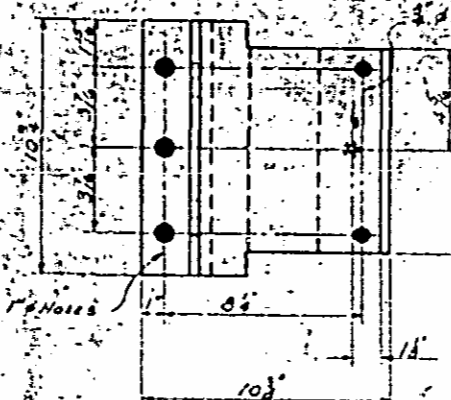
FRONT ELEVATION
 DETAILS OF POST



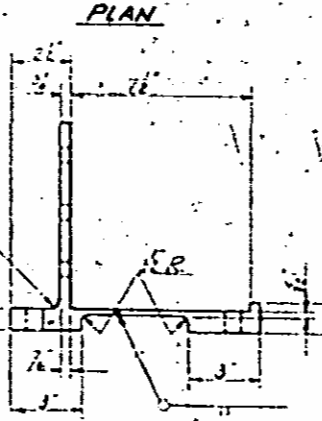
SIDE ELEVATION



FRONT ELEVATION

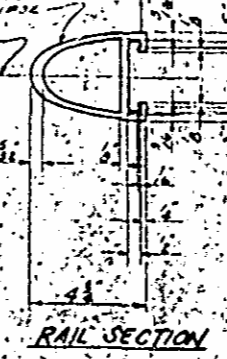


PLAN

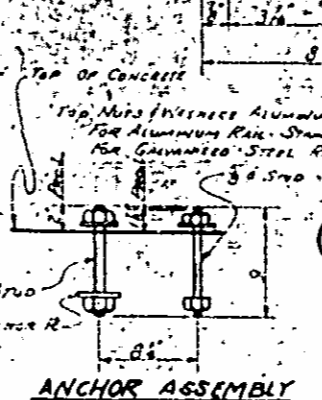


SIDE ELEVATION

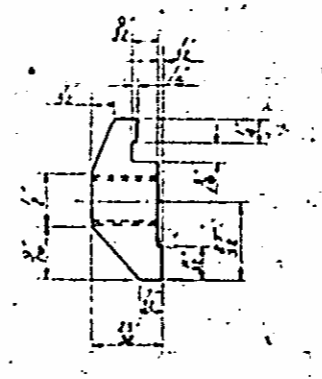
POST BASE DETAILS



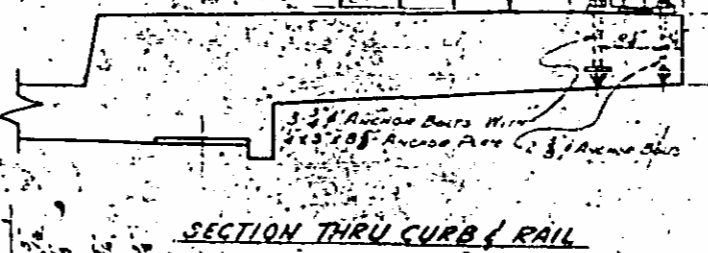
RAIL SECTION



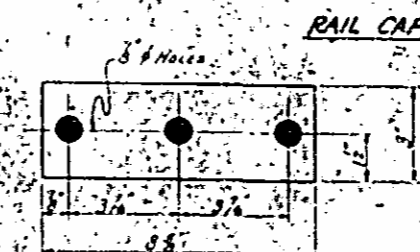
ANCHOR ASSEMBLY



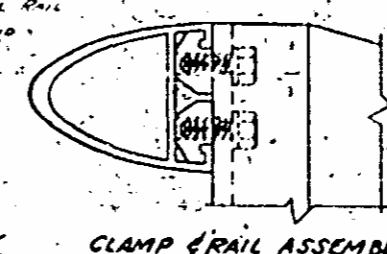
CLAMP BAR DETAIL
 (6 REQUIRED PER POST)



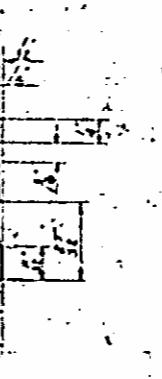
SECTION THRU CURB & RAIL



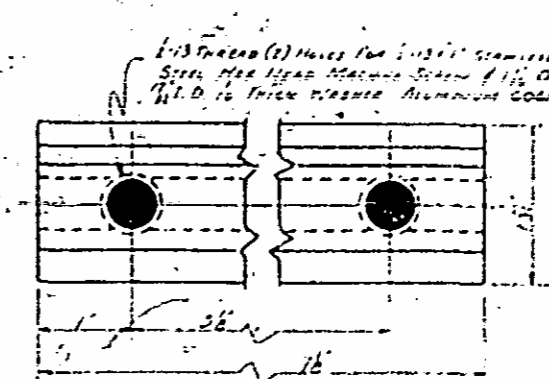
ANCHOR PLATE



CLAMP RAIL ASSEMBLY



CLAMP BAR DETAIL
 (6 REQUIRED PER POST)



CLAMP BAR DETAIL
 (6 REQUIRED PER POST)

At The Contractor's Option Metal Rail May Be Either Aluminum Or Galvanized Steel In Accordance With The Requirements Of The GENERAL NOTES AND THE FOLLOWING SPECIFICATIONS FOR THE ALUMINUM MATERIALS. HOWEVER THE CONTRACTOR WILL BE REQUIRED TO USE THE SAME RAIL MATERIAL ON ALL STRUCTURES ON THE PROJECT FOR WHICH METAL RAIL IS DESIGNATED.

ALUMINUM RAILS
 Material For Posts, Brackets, Nuts, Expansion Bars, & Clamp Bars Shall Be ASTM B211 Alloy 6062-T6.
 Material For Anchor Bolts Nuts Shall Be ASTM A307 Grade A Alloy Steel.
 Material For Anchor Plates Shall Be ASTM A36.
 Material For Expansion Bars Shall Be ASTM A36.
 Material For Aluminum Nuts Shall Be ASTM B211 Alloy 6062-T6.
 Material For Aluminum Washers Shall Be ASTM B211 Alloy 6062-T6.
 Material For Aluminum Spacers Shall Be ASTM B211 Alloy 6062-T6.
 Material For Aluminum Spacers Shall Be ASTM B211 Alloy 6062-T6.
 Material For Aluminum Spacers Shall Be ASTM B211 Alloy 6062-T6.

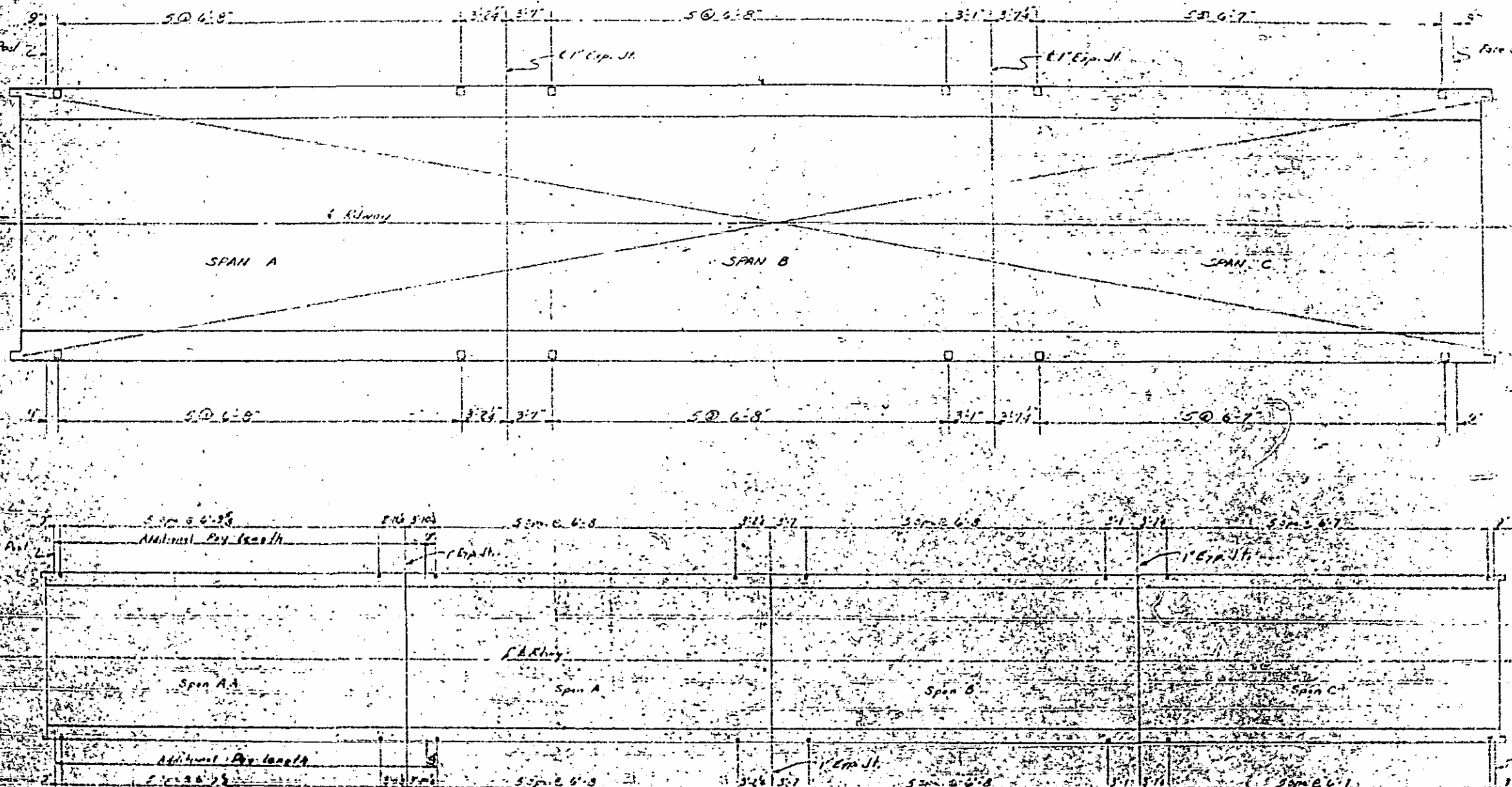
GALVANIZED STEEL RAILS
 Materials And Dimensions Shall Conform To The Following Specifications:
 RAIL POST (TYP. BASE): A.S.T.M. A36 GRADE STRUCTURAL STEEL GALVANIZED TO A.S.T.M. A123.
 RAIL (EXPANSION BAR): A.S.T.M. A36 GRADE STRUCTURAL STEEL GALVANIZED TO A.S.T.M. A123.
 CLAMP PLATE (TYP.): A.S.T.M. A36 GRADE C GALVANIZED TO A.S.T.M. A123.
 NUTS & WASHERS: A.S.T.M. A307 GRADE A.
 ANCHOR ASSEMBLY FOR STEEL RAIL SHALL BE 1/2" DIA. 430 STAINLESS STEEL.
 THE CUT ENDS OF GALVANIZED STEEL SHALL BE GIVEN TWO COATS OF ZINC PRIMER AFTER THE REMOVAL OF OILS OR FEDERAL SPECIFICATION MIL-P-2625 USAF TYPE 1.

GENERAL NOTES
 1. RAILING SHALL BE CONTINUOUS FROM END POST TO END POST OF BRIDGE. EACH JOINT IN RAIL LENGTH SHALL BE SPICED AS DETAIL. PANEL LENGTHS OF RAIL SHALL BE ATTACHED TO A MINIMUM OF FOUR PILES.
 2. END OF RAIL TO CLEAR FACE OF CONCRETE END POST BY 1/2".
 3. MATERIAL FOR ANCHOR STUDS SHALL BE TYPE 430 STAINLESS STEEL WITH MINIMUM 70,000 U.T.S. ULTIMATE STRENGTH.
 4. SPACERS TO BE SUPPLIED BY CONTRACTOR. NUTS SHALL BE AMERICAN STANDARD FINISHED HEXAGON THICK NUTS. GALV. SHEET ANCHOR PLATES SHALL BE A.S.T.M. A36 OR A36 PLATING STEEL. THE RAIL ATTACHMENT SHALL BE STAINLESS STEEL.
 5. CONTRACTOR SHALL REPORT ALL SPACERS FOR RAILS & POSTS. SPACER IS NOT DIMENSIONED.
 6. METAL RAIL POSTS TO BE SPICED TO CURB GROUND.
 7. FINISHING OF ANCHORMENT FOR METAL RAIL: UNLESS OTHERWISE SPECIFIED THE LENGTH OF METAL RAIL TO BE HUNG FOR SHALL BE THE CONTINUOUS HORIZONTAL LENGTH. METAL RAIL SHALL BE HUNG TO BRIDGE OF CONCRETE RAIL CURB. RAIL CURB SHALL HAVE RAIL HUNG TO BE USED ON BRIDGES OR INTERCHANGES AND/OR VERTICAL CURVES. THE CONTRACTOR SHALL AT HIS OPTION HANG THE REQUIRED CURB IN THE RAIL FORMER IN THE SHOP OR IN THE FIELD. IN EITHER CASE THE RAIL SHALL CONFORM WITHOUT BUCKLING OR KINKING TO THE REQUIRED CURVATURE IN A MANNER DEEMED ACCEPTABLE BY THE ENGINEER.

Mr. LEWIS B. ST. J.

PROJECT NO. C.1341703
 Haywood COUNTY
 STATION: 15+70 - L Rev

STATE OF NORTH CAROLINA STATE HIGHWAY COMMISSION	
STANDARD 3 BAR METAL RAIL FOR SPAN AA	
AUGUST	1964
	64A
	30



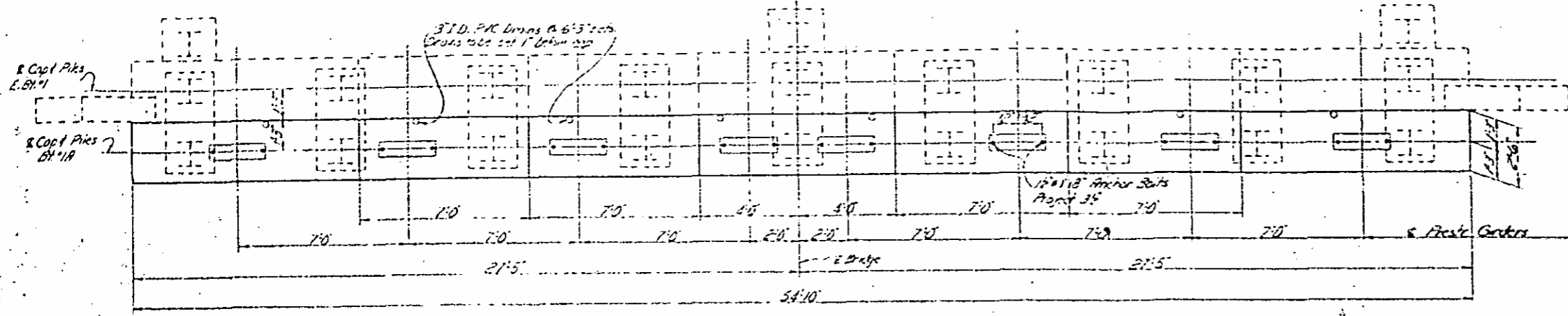
PROJECT NO. 81241703
 HAYWARD COUNTY
 STATION 13+10.1-13+10.1

STATE OF NORTH CAROLINA
STATE HIGHWAY COMMISSION
 RAIL POST SPACING

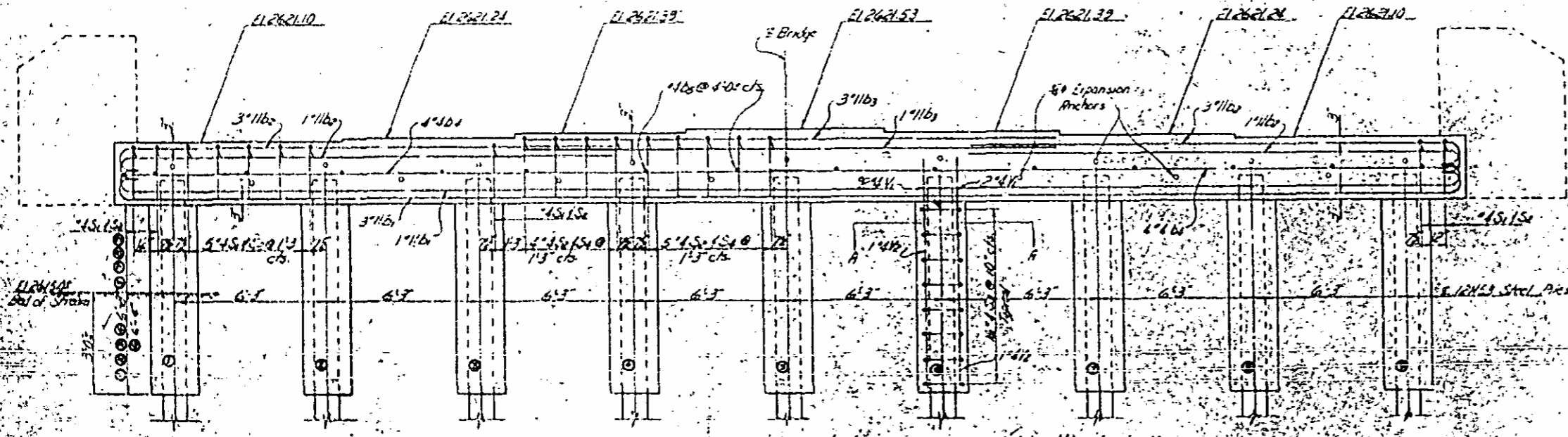
Approved: _____ Date: 1973

NO.	BY	DATE	W.C.	REVISION	1-36
1	J.P.	2/28/73			30

Revision #1 - Addition of rail in Span A by J.P.U. 2/28/73



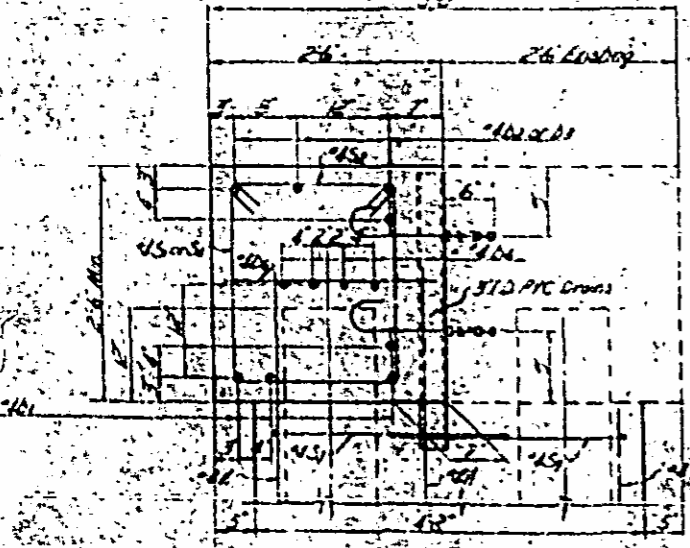
PLAN



ELEVATION

Note: No. ② Encasement less than plan length due to encountering solid rock.

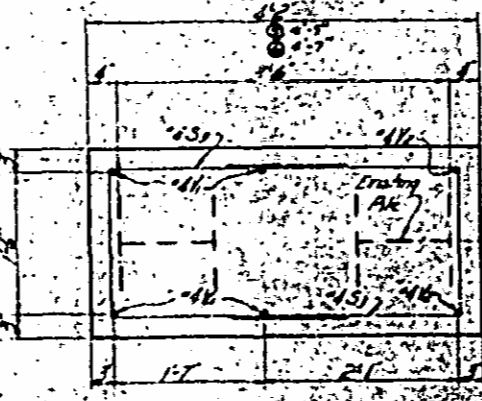
Note: 2 wings and brace pile caps on existing E.B.T. shall be removed as directed by the Engineer, roughed concrete shall be plastered with 1:2 cement mortar having a minimum thickness of 1". Brace piles at E.B.T. shall be cut off at EL. 2621.28. Clean existing piles in existing E.B.T. prior to encasement.



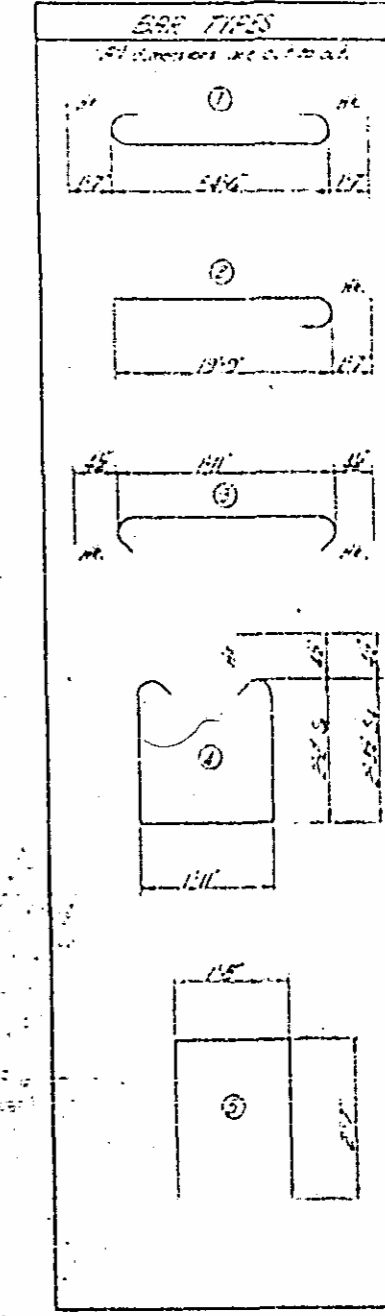
SECTION P-P

DRAIN DETAIL

No. Required - 8
Drains shall be of PVC plastic pipe, meeting the maximum requirements of RSTAN O-1255-647.



SECTION R-R



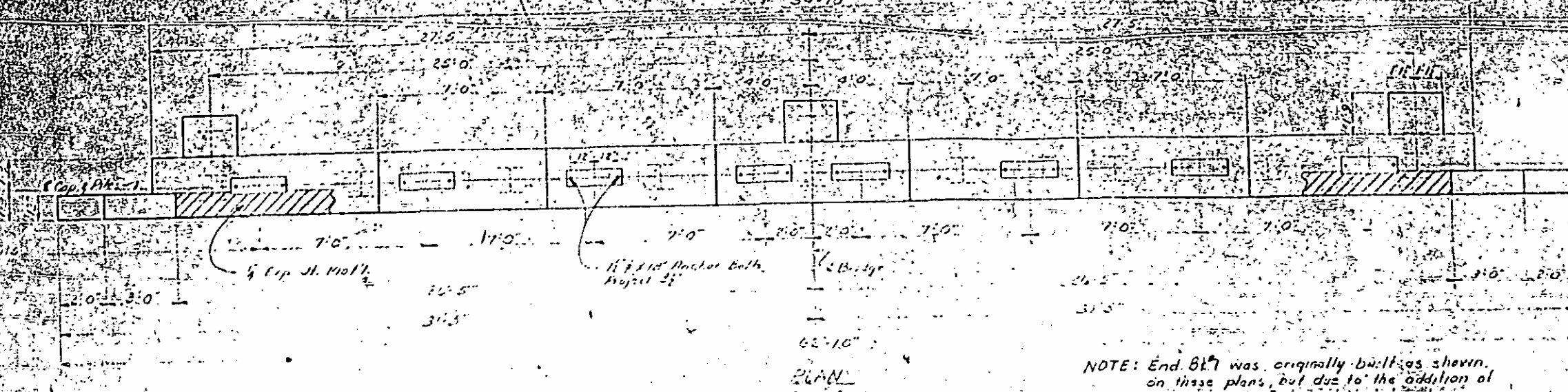
BENT TYPES		BILL OF MATERIAL				
BENT NO. 1A						
BAR	NO.	SIZE	TYPE	LENGTH	WEIGHT	
1	1	11	1	57'8"	1222	
2	2	11	2	21'8"	907	
3	3	11	3	27'3"	540	
4	4	11	4	27'11"	132	
5	5	11	5	2'2"	20	
6	6	11	6	2'0"	122	
7	7	11	7	2'4"	78	
8	8	11	8	5'0"	482	
9	9	11	9	7'5"	132	
10	10	11	10	8'0"	128	
11	11	11	11	6'3"	76	

PROJECT NO. 81241703
HAYWOOD COUNTY
STATION 15+70 - L. R.R.

STATE OF NORTH CAROLINA
STATE HIGHWAY COMMISSION
Division
SUBSTRUCTURE
BENT NO. 1A

DATE	BY	NO.	REV.	NO.

EXPANSION ANCHOR
No. Required - 17

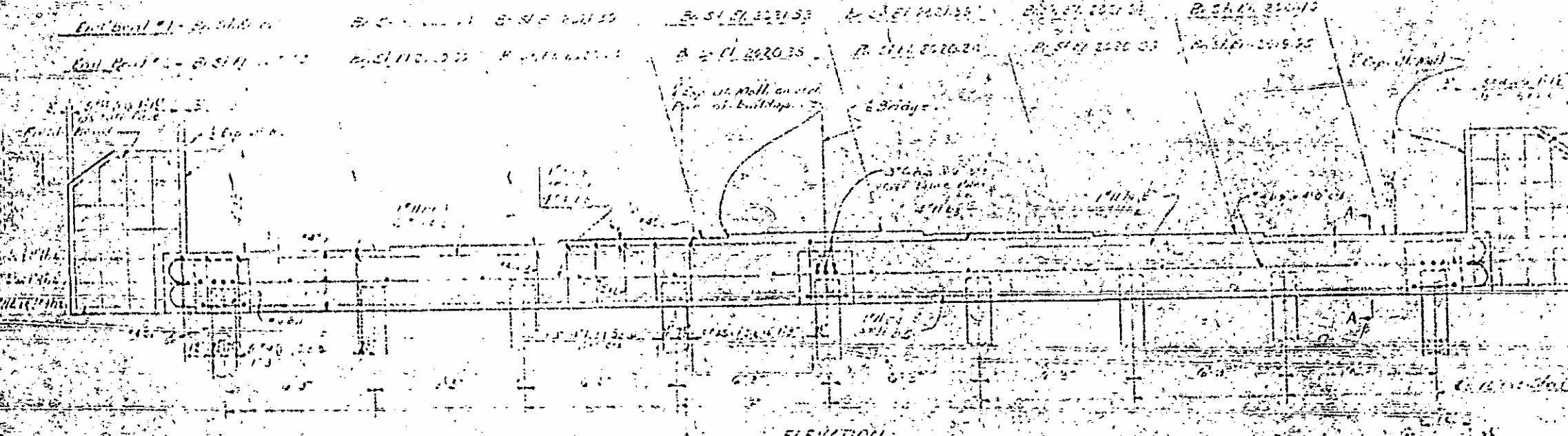


NOTE: End B17 was originally built as shown on these plans, but due to the addition of an end span, End Bent No. 1 has been altered. See Bent 1A.

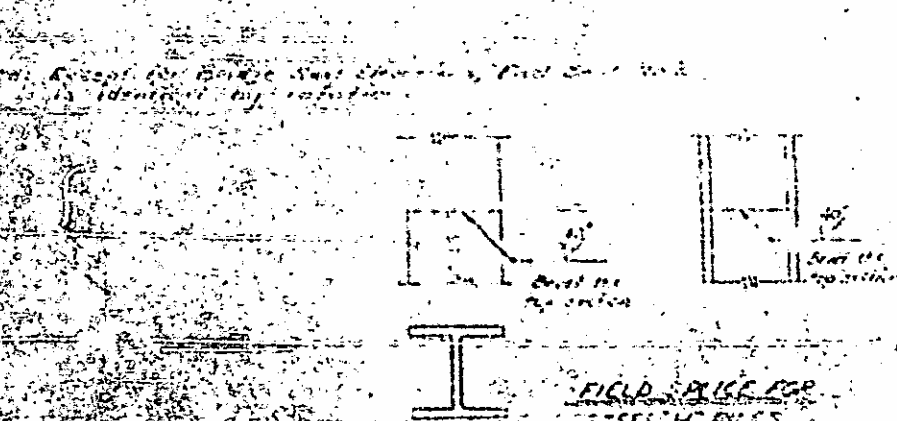
PLAN

BILL OF MATERIALS
FOR ONE END BENT

ITEM	QTY	UNIT	PRICE	TOTAL
1. Concrete	10.5	cuyd	22.00	231.00
2. Steel	1.2	tons	18.00	21.60
3. Cement	1.0	tons	15.00	15.00
4. Sand	1.0	tons	10.00	10.00
5. Gravel	1.0	tons	8.00	8.00
6. Scaffolding	1.0	days	1.00	1.00
7. Labor	1.0	days	1.00	1.00
8. Forms	1.0	sq. ft.	1.00	1.00
9. Bridge	1.0	sq. ft.	1.00	1.00
10. Sill	1.0	sq. ft.	1.00	1.00
11. Deck	1.0	sq. ft.	1.00	1.00
12. Truss	1.0	sq. ft.	1.00	1.00
13. Girders	1.0	sq. ft.	1.00	1.00
14. Posts	1.0	sq. ft.	1.00	1.00
15. Bracing	1.0	sq. ft.	1.00	1.00
16. Deck	1.0	sq. ft.	1.00	1.00
17. Sill	1.0	sq. ft.	1.00	1.00
18. Truss	1.0	sq. ft.	1.00	1.00
19. Girders	1.0	sq. ft.	1.00	1.00
20. Posts	1.0	sq. ft.	1.00	1.00
21. Bracing	1.0	sq. ft.	1.00	1.00
22. Deck	1.0	sq. ft.	1.00	1.00
23. Sill	1.0	sq. ft.	1.00	1.00
24. Truss	1.0	sq. ft.	1.00	1.00
25. Girders	1.0	sq. ft.	1.00	1.00
26. Posts	1.0	sq. ft.	1.00	1.00
27. Bracing	1.0	sq. ft.	1.00	1.00
28. Deck	1.0	sq. ft.	1.00	1.00
29. Sill	1.0	sq. ft.	1.00	1.00
30. Truss	1.0	sq. ft.	1.00	1.00
31. Girders	1.0	sq. ft.	1.00	1.00
32. Posts	1.0	sq. ft.	1.00	1.00
33. Bracing	1.0	sq. ft.	1.00	1.00
34. Deck	1.0	sq. ft.	1.00	1.00
35. Sill	1.0	sq. ft.	1.00	1.00
36. Truss	1.0	sq. ft.	1.00	1.00
37. Girders	1.0	sq. ft.	1.00	1.00
38. Posts	1.0	sq. ft.	1.00	1.00
39. Bracing	1.0	sq. ft.	1.00	1.00
40. Deck	1.0	sq. ft.	1.00	1.00
41. Sill	1.0	sq. ft.	1.00	1.00
42. Truss	1.0	sq. ft.	1.00	1.00
43. Girders	1.0	sq. ft.	1.00	1.00
44. Posts	1.0	sq. ft.	1.00	1.00
45. Bracing	1.0	sq. ft.	1.00	1.00
46. Deck	1.0	sq. ft.	1.00	1.00
47. Sill	1.0	sq. ft.	1.00	1.00
48. Truss	1.0	sq. ft.	1.00	1.00
49. Girders	1.0	sq. ft.	1.00	1.00
50. Posts	1.0	sq. ft.	1.00	1.00
51. Bracing	1.0	sq. ft.	1.00	1.00
52. Deck	1.0	sq. ft.	1.00	1.00
53. Sill	1.0	sq. ft.	1.00	1.00
54. Truss	1.0	sq. ft.	1.00	1.00
55. Girders	1.0	sq. ft.	1.00	1.00
56. Posts	1.0	sq. ft.	1.00	1.00
57. Bracing	1.0	sq. ft.	1.00	1.00
58. Deck	1.0	sq. ft.	1.00	1.00
59. Sill	1.0	sq. ft.	1.00	1.00
60. Truss	1.0	sq. ft.	1.00	1.00
61. Girders	1.0	sq. ft.	1.00	1.00
62. Posts	1.0	sq. ft.	1.00	1.00
63. Bracing	1.0	sq. ft.	1.00	1.00
64. Deck	1.0	sq. ft.	1.00	1.00
65. Sill	1.0	sq. ft.	1.00	1.00
66. Truss	1.0	sq. ft.	1.00	1.00
67. Girders	1.0	sq. ft.	1.00	1.00
68. Posts	1.0	sq. ft.	1.00	1.00
69. Bracing	1.0	sq. ft.	1.00	1.00
70. Deck	1.0	sq. ft.	1.00	1.00
71. Sill	1.0	sq. ft.	1.00	1.00
72. Truss	1.0	sq. ft.	1.00	1.00
73. Girders	1.0	sq. ft.	1.00	1.00
74. Posts	1.0	sq. ft.	1.00	1.00
75. Bracing	1.0	sq. ft.	1.00	1.00
76. Deck	1.0	sq. ft.	1.00	1.00
77. Sill	1.0	sq. ft.	1.00	1.00
78. Truss	1.0	sq. ft.	1.00	1.00
79. Girders	1.0	sq. ft.	1.00	1.00
80. Posts	1.0	sq. ft.	1.00	1.00
81. Bracing	1.0	sq. ft.	1.00	1.00
82. Deck	1.0	sq. ft.	1.00	1.00
83. Sill	1.0	sq. ft.	1.00	1.00
84. Truss	1.0	sq. ft.	1.00	1.00
85. Girders	1.0	sq. ft.	1.00	1.00
86. Posts	1.0	sq. ft.	1.00	1.00
87. Bracing	1.0	sq. ft.	1.00	1.00
88. Deck	1.0	sq. ft.	1.00	1.00
89. Sill	1.0	sq. ft.	1.00	1.00
90. Truss	1.0	sq. ft.	1.00	1.00
91. Girders	1.0	sq. ft.	1.00	1.00
92. Posts	1.0	sq. ft.	1.00	1.00
93. Bracing	1.0	sq. ft.	1.00	1.00
94. Deck	1.0	sq. ft.	1.00	1.00
95. Sill	1.0	sq. ft.	1.00	1.00
96. Truss	1.0	sq. ft.	1.00	1.00
97. Girders	1.0	sq. ft.	1.00	1.00
98. Posts	1.0	sq. ft.	1.00	1.00
99. Bracing	1.0	sq. ft.	1.00	1.00
100. Deck	1.0	sq. ft.	1.00	1.00



ELEVATION



FIELD PRICE FOR REINFORCEMENT

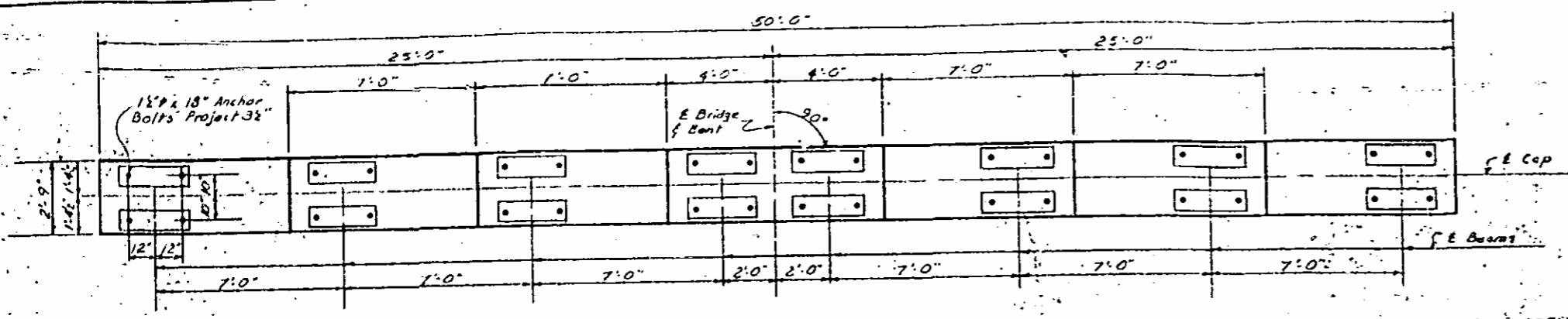
SECTION A-A

SECTION THROUGH EAR WALLS

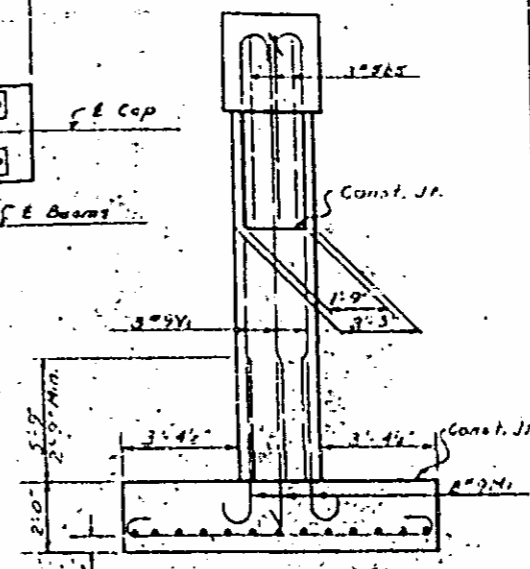
PROJECT No. B124122
WAYNOK COUNTY
STATION 15+72

STATE OF NORTH CAROLINA
STATE HIGHWAY COMMISSION
 DARRH
 SUPPLEMENTAL
END BENT NO. 1A

NO.	DATE	BY	APPROVED



PLAN OF CAP



END ELEVATION

Note: Care shall be taken in placing bars to clear anchor bolts.
 In placing #5 bars limits may be varied.

CONCRETE BREAKDOWN

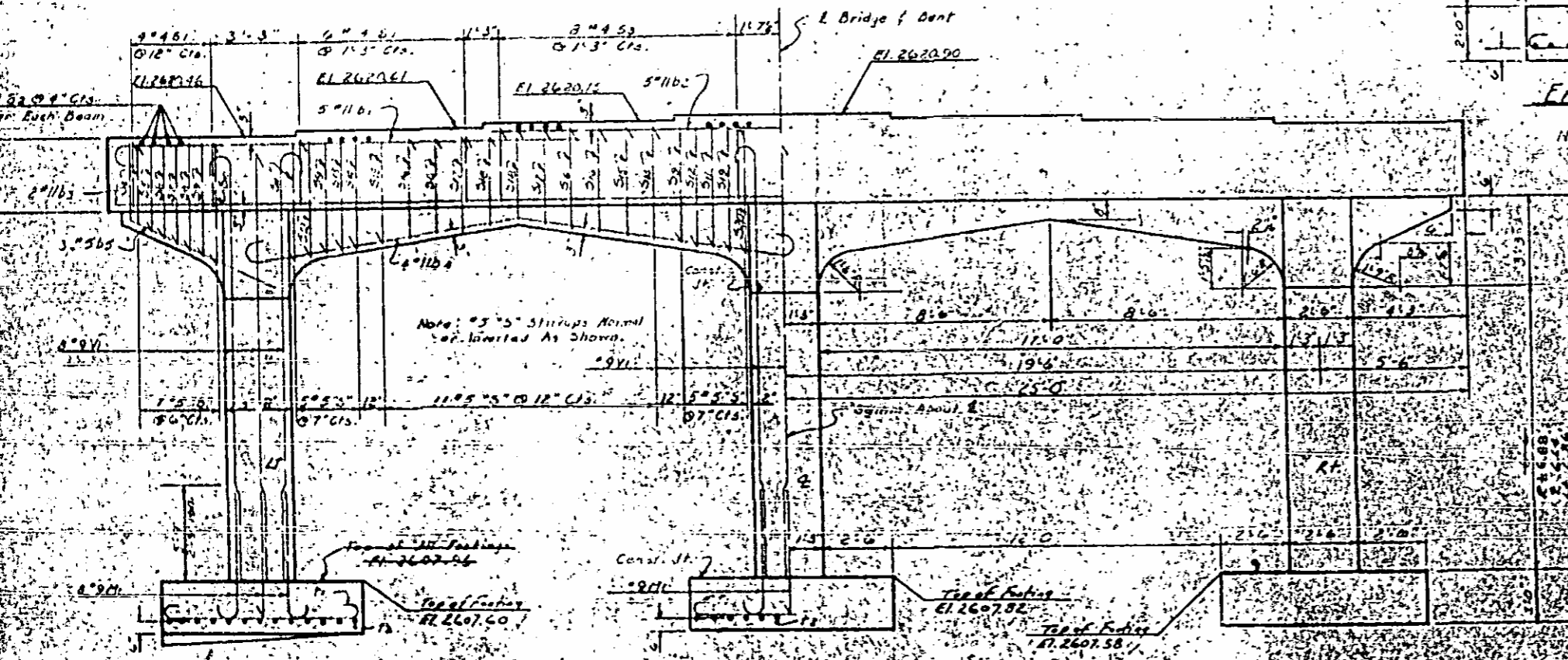
POUR NO.	CU. YDS.
1	15.18
2	15.41
3	20.7
TOTAL	51.29

BAR TYPES

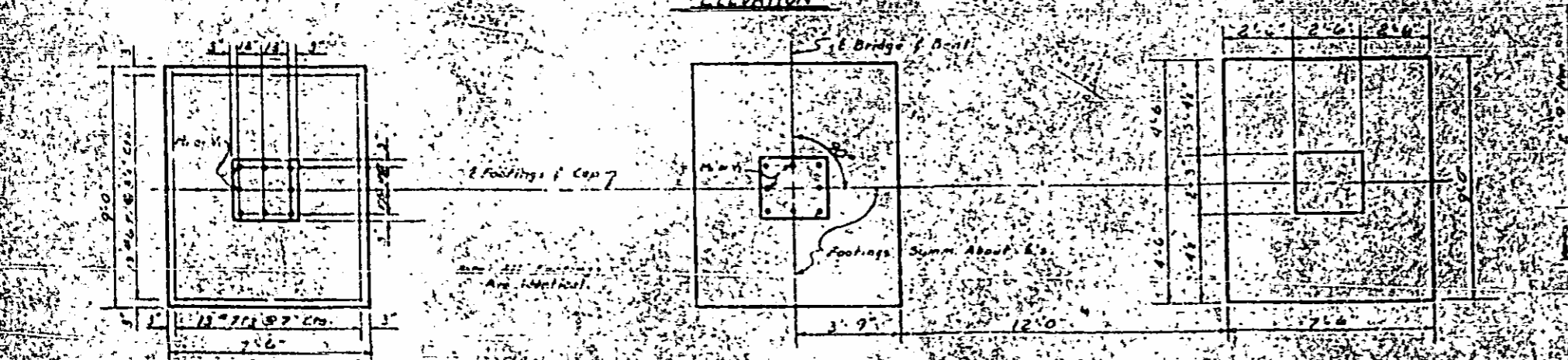
Note: All Bar Dimensions Are Out To Out.

Bar No.	Size	Type	Length	Weight
B1	#11	1	19'1"	1014
B2	#11	2	21'4"	971
B3	#11	3	49'6"	326
B4	#11	2	25'2"	1027
B5	#5	3	3'10"	51
B6	#4	4	8'0"	107
B7	#4	5	3'2"	68
B8	#4	4	8'7"	93
B9	#5	4	9'6"	119
B10	#5	4	9'11"	119
B11	#5	4	9'4"	58
B12	#5	4	9'9"	20
B13	#5	4	10'2"	21
B14	#5	4	10'7"	24
B15	#5	4	11'0"	23
B16	#5	4	10'11"	46
B17	#5	4	10'9"	45
B18	#5	4	10'5"	22
B19	#5	4	10'3"	44
B20	#5	4	9'11"	24
B21	#5	4	9'7"	20
B22	#5	4	9'0"	38
B23	#5	4	8'8"	33
B24	#5	4	11'1"	52
B25	#5	4	11'3"	23
B26	#5	4	11'4"	49
B27	#5	4	12'2"	91
B28	#5	4	12'1"	4
B29	#5	4	12'1"	1001
B30	#5	4	12'6"	694

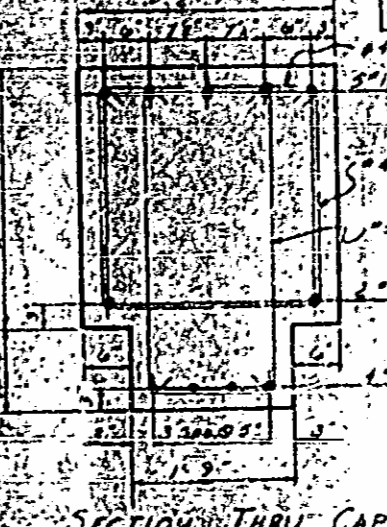
Maintaining Steel - Lbs. 7115
 Class "A" Concrete - Cu. Yds. 51.29



ELEVATION



PLAN OF FOOTINGS



SECTION THRU CAP

PROJECT No. 8.1941703
 HAYWOOD COUNTY
 STATION 15+70 L-REV

STATE OF NORTH CAROLINA
STATE HIGHWAY COMMISSION
 Raleigh
 SUBSTRUCTURE
 BENT No. 1

SEPT. 1965

NO.	BY	DATE	REVISION
1			
2			

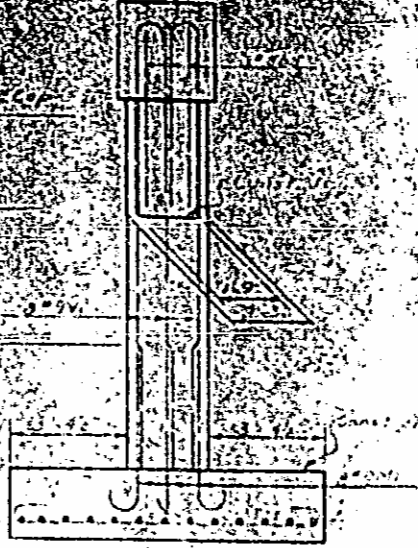
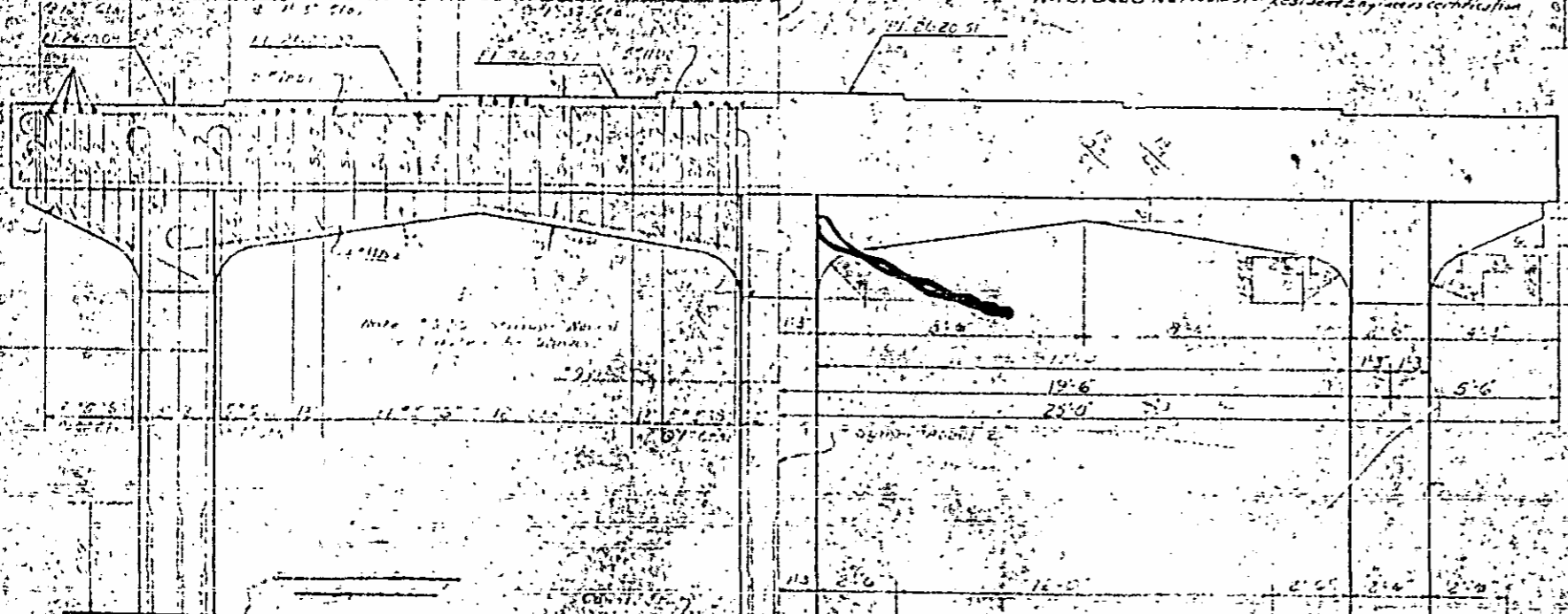
1	2	3	4	5	6	7	8	9	10	11	12	13	14	15	16	17	18	19	20	21	22	23	24	25	26	27	28	29	30	31	32	33	34	35	36	37	38	39	40	41	42	43	44	45	46	47	48	49	50	51	52	53	54	55	56	57	58	59	60	61	62	63	64	65	66	67	68	69	70	71	72	73	74	75	76	77	78	79	80	81	82	83	84	85	86	87	88	89	90	91	92	93	94	95	96	97	98	99	100
---	---	---	---	---	---	---	---	---	----	----	----	----	----	----	----	----	----	----	----	----	----	----	----	----	----	----	----	----	----	----	----	----	----	----	----	----	----	----	----	----	----	----	----	----	----	----	----	----	----	----	----	----	----	----	----	----	----	----	----	----	----	----	----	----	----	----	----	----	----	----	----	----	----	----	----	----	----	----	----	----	----	----	----	----	----	----	----	----	----	----	----	----	----	----	----	----	----	----	-----

PLAN OF CAP

Thereby certify that this structure was built according to plans except as noted herein.

Resident Engineer.

Note: See Sheet No. 55 for Resident Engineer's certification

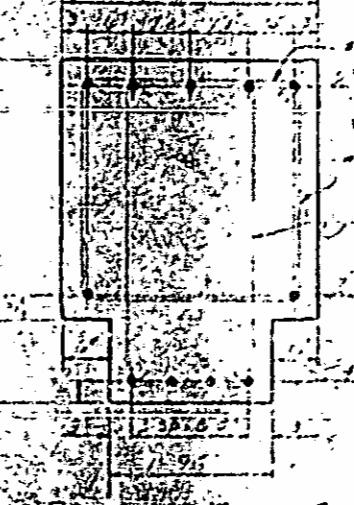
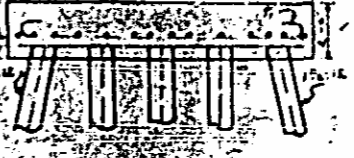


END ELEVATION

Note: Care shall be taken in placing bars to clear anchor bolts.

In placing bars hooks may be furnished.

POUR NO.	Cu. Yds.
1-5 FT. 0" - 18.6	18.6
2-5 FT. 0" - 3.1	3.1
3-5 FT. 0" - 20.7	20.7
TOTAL	42.4



BAR LIST

BAR NO.	SIZE	SHAPE	QTY	WEIGHT
1	1/2"	1/2"	10	10.2
2	3/4"	3/4"	10	15.3
3	1"	1"	10	20.4
4	1 1/4"	1 1/4"	10	25.5
5	1 1/2"	1 1/2"	10	30.6
6	2"	2"	10	40.8
7	2 1/2"	2 1/2"	10	50.9
8	3"	3"	10	61.0
9	3 1/2"	3 1/2"	10	71.1
10	4"	4"	10	81.2
11	4 1/2"	4 1/2"	10	91.3
12	5"	5"	10	101.4
13	5 1/2"	5 1/2"	10	111.5
14	6"	6"	10	121.6
15	6 1/2"	6 1/2"	10	131.7
16	7"	7"	10	141.8
17	7 1/2"	7 1/2"	10	151.9
18	8"	8"	10	162.0
19	8 1/2"	8 1/2"	10	172.1
20	9"	9"	10	182.2
21	9 1/2"	9 1/2"	10	192.3
22	10"	10"	10	202.4
23	10 1/2"	10 1/2"	10	212.5
24	11"	11"	10	222.6
25	11 1/2"	11 1/2"	10	232.7
26	12"	12"	10	242.8
27	12 1/2"	12 1/2"	10	252.9
28	13"	13"	10	263.0
29	13 1/2"	13 1/2"	10	273.1
30	14"	14"	10	283.2
31	14 1/2"	14 1/2"	10	293.3
32	15"	15"	10	303.4
33	15 1/2"	15 1/2"	10	313.5
34	16"	16"	10	323.6
35	16 1/2"	16 1/2"	10	333.7
36	17"	17"	10	343.8
37	17 1/2"	17 1/2"	10	353.9
38	18"	18"	10	364.0
39	18 1/2"	18 1/2"	10	374.1
40	19"	19"	10	384.2
41	19 1/2"	19 1/2"	10	394.3
42	20"	20"	10	404.4
43	20 1/2"	20 1/2"	10	414.5
44	21"	21"	10	424.6
45	21 1/2"	21 1/2"	10	434.7
46	22"	22"	10	444.8
47	22 1/2"	22 1/2"	10	454.9
48	23"	23"	10	465.0
49	23 1/2"	23 1/2"	10	475.1
50	24"	24"	10	485.2
51	24 1/2"	24 1/2"	10	495.3
52	25"	25"	10	505.4
53	25 1/2"	25 1/2"	10	515.5
54	26"	26"	10	525.6
55	26 1/2"	26 1/2"	10	535.7
56	27"	27"	10	545.8
57	27 1/2"	27 1/2"	10	555.9
58	28"	28"	10	566.0
59	28 1/2"	28 1/2"	10	576.1
60	29"	29"	10	586.2
61	29 1/2"	29 1/2"	10	596.3
62	30"	30"	10	606.4
63	30 1/2"	30 1/2"	10	616.5
64	31"	31"	10	626.6
65	31 1/2"	31 1/2"	10	636.7
66	32"	32"	10	646.8
67	32 1/2"	32 1/2"	10	656.9
68	33"	33"	10	667.0
69	33 1/2"	33 1/2"	10	677.1
70	34"	34"	10	687.2
71	34 1/2"	34 1/2"	10	697.3
72	35"	35"	10	707.4
73	35 1/2"	35 1/2"	10	717.5
74	36"	36"	10	727.6
75	36 1/2"	36 1/2"	10	737.7
76	37"	37"	10	747.8
77	37 1/2"	37 1/2"	10	757.9
78	38"	38"	10	768.0
79	38 1/2"	38 1/2"	10	778.1
80	39"	39"	10	788.2
81	39 1/2"	39 1/2"	10	798.3
82	40"	40"	10	808.4
83	40 1/2"	40 1/2"	10	818.5
84	41"	41"	10	828.6
85	41 1/2"	41 1/2"	10	838.7
86	42"	42"	10	848.8
87	42 1/2"	42 1/2"	10	858.9
88	43"	43"	10	869.0
89	43 1/2"	43 1/2"	10	879.1
90	44"	44"	10	889.2
91	44 1/2"	44 1/2"	10	899.3
92	45"	45"	10	909.4
93	45 1/2"	45 1/2"	10	919.5
94	46"	46"	10	929.6
95	46 1/2"	46 1/2"	10	939.7
96	47"	47"	10	949.8
97	47 1/2"	47 1/2"	10	959.9
98	48"	48"	10	970.0
99	48 1/2"	48 1/2"	10	980.1
100	49"	49"	10	990.2

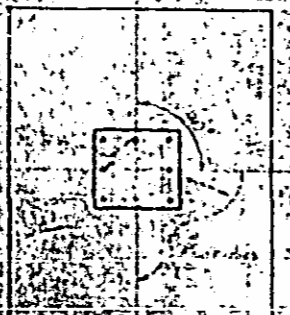
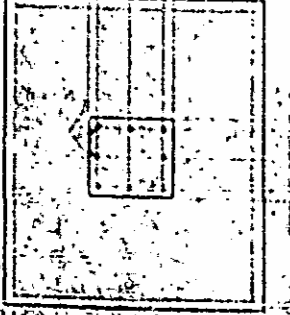
PROJECT No. 31991709
 Harwood COUNTY
 STATION 11+21.00

STATE OF NORTH CAROLINA
 STATE HIGHWAY COMMISSION

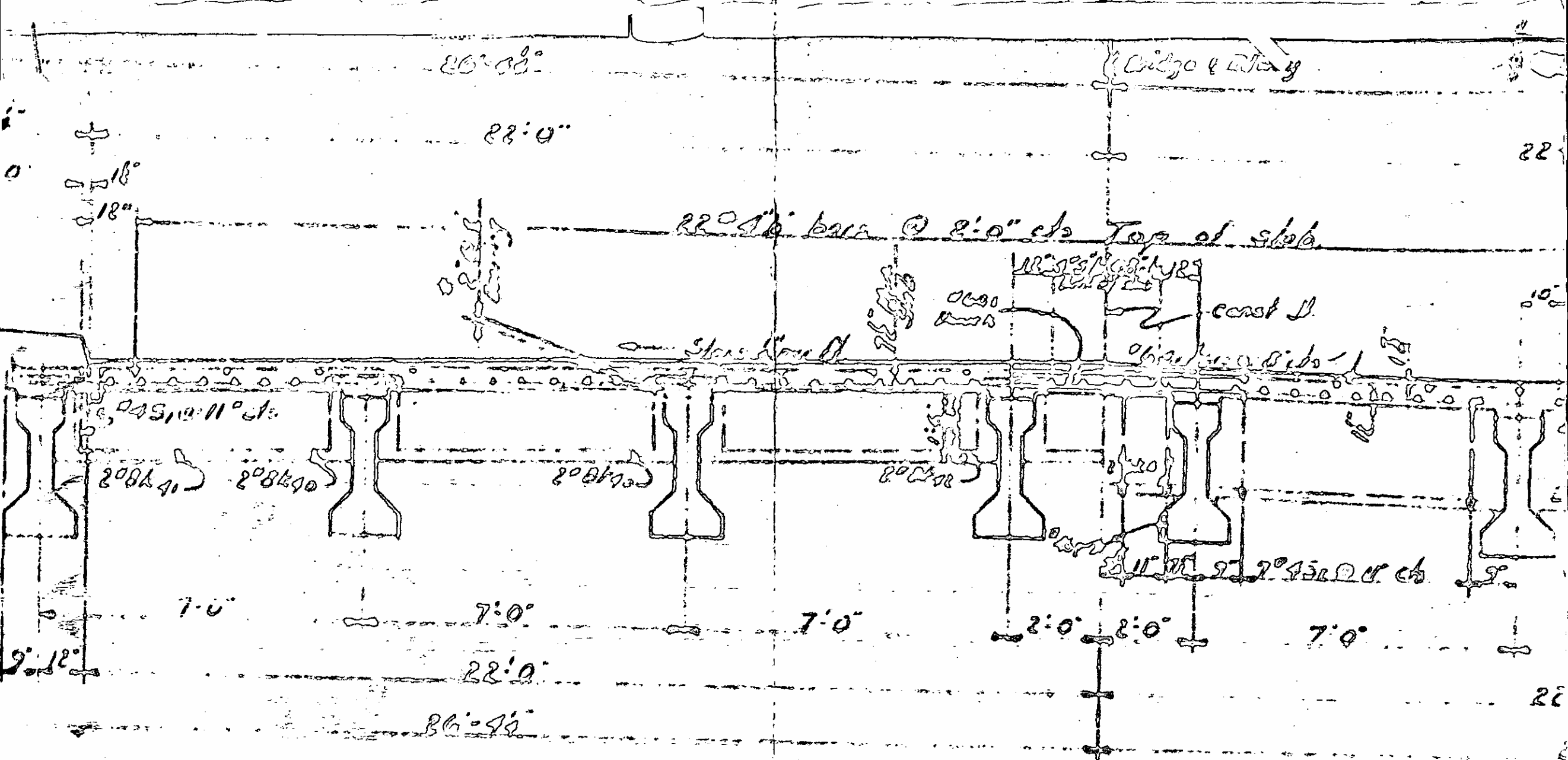
For Changes in Footing, See Mr. Barnett's Report of 12-19-67.

For Changes in Footing, See Mr. Barnett's Report of 12-28-67.

For Changes in Footing, See Mr. Barnett's Report of 1-8-68.



SECTION 1-4



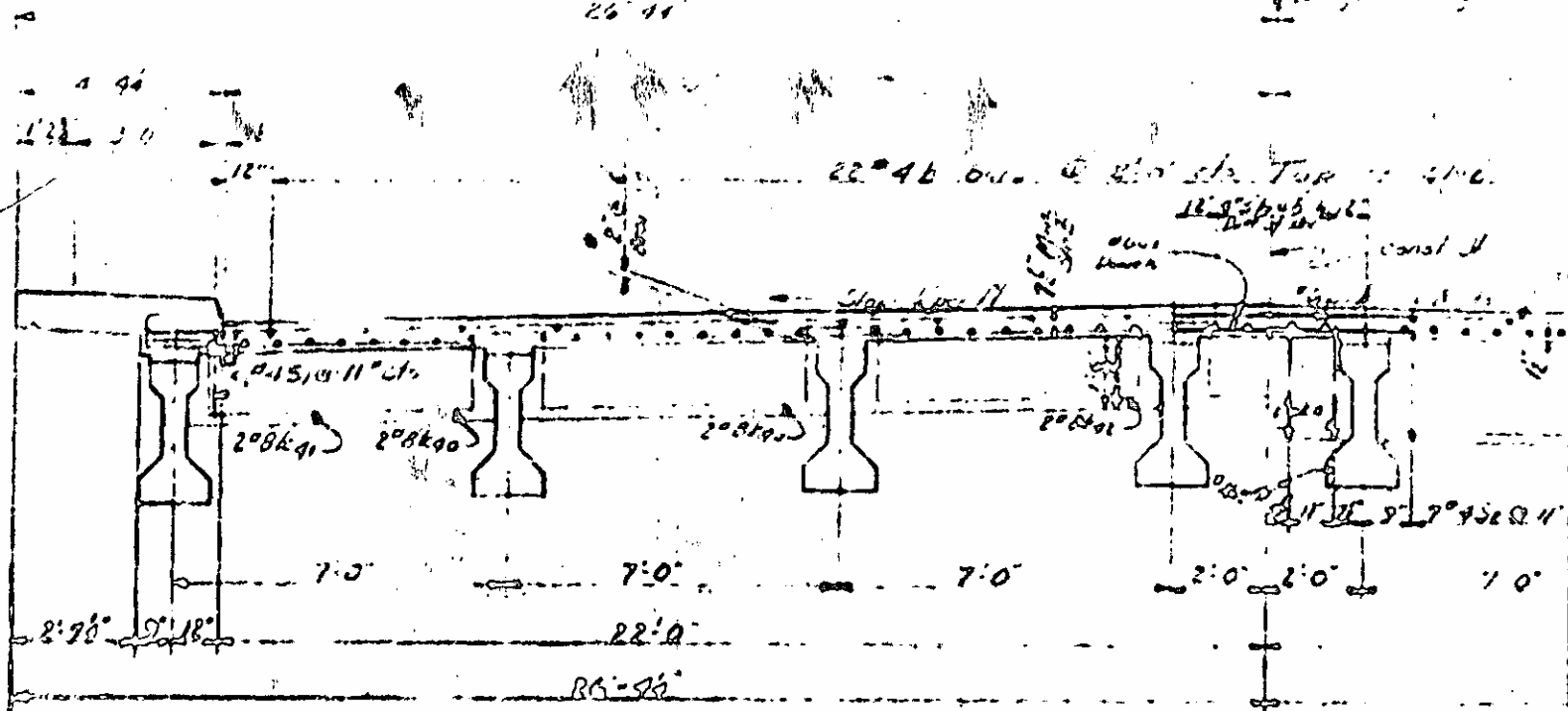
PART SECTION
BENT DIAPHRAGM

PART
INTERMEDIATE

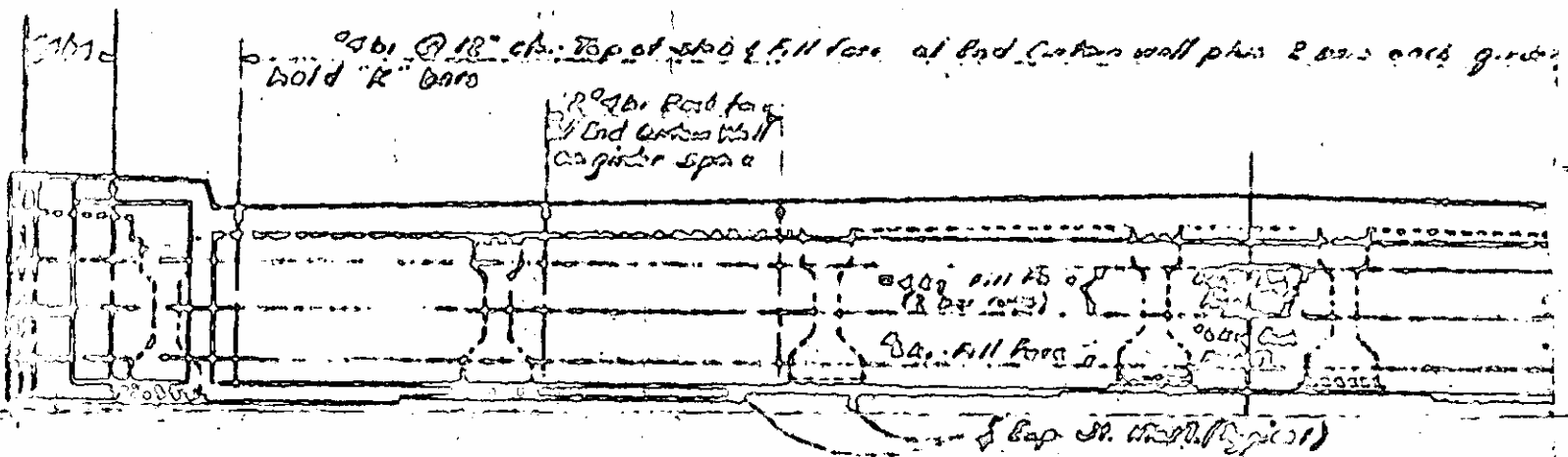
2#8 @ 18" cl. Top of slab & Full length of bent diaphragm wall plus 2 bars each, 2' apart, space in between

2#8 @ 18" cl. Bottom of slab & Full length of bent diaphragm wall plus 2 bars each, 2' apart, space in between

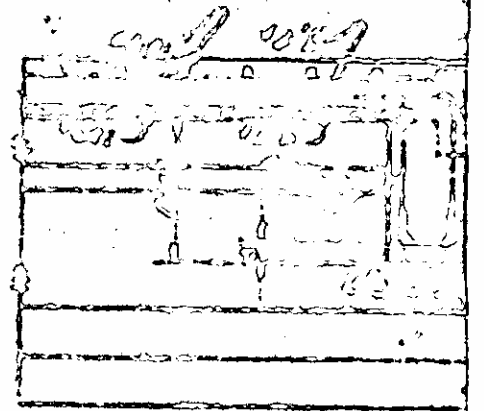
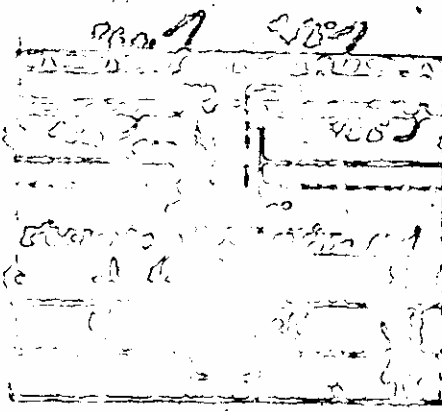
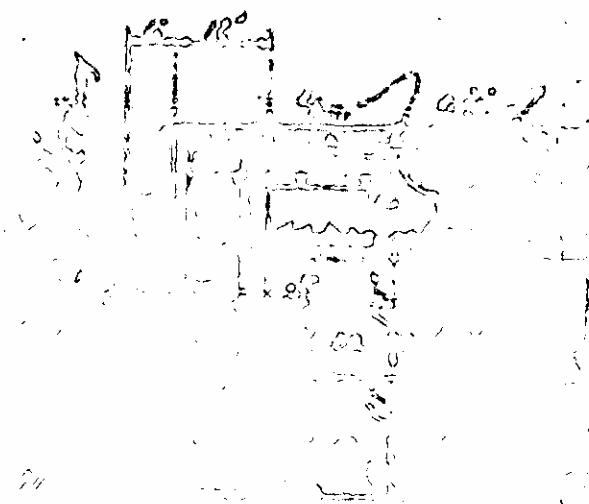
2#8 @ 18" cl. Bottom of slab & Full length of bent diaphragm wall plus 2 bars each, 2' apart, space in between



PART SECTION
BENT DIAPHRAGM

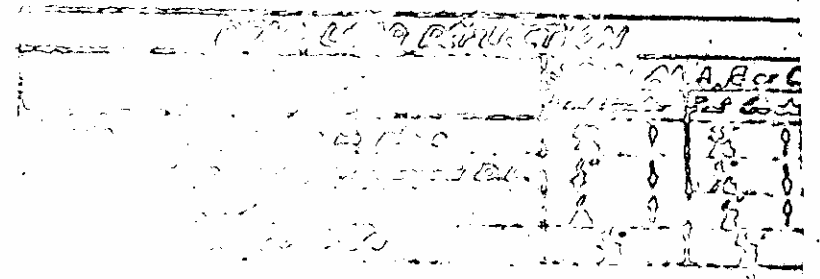


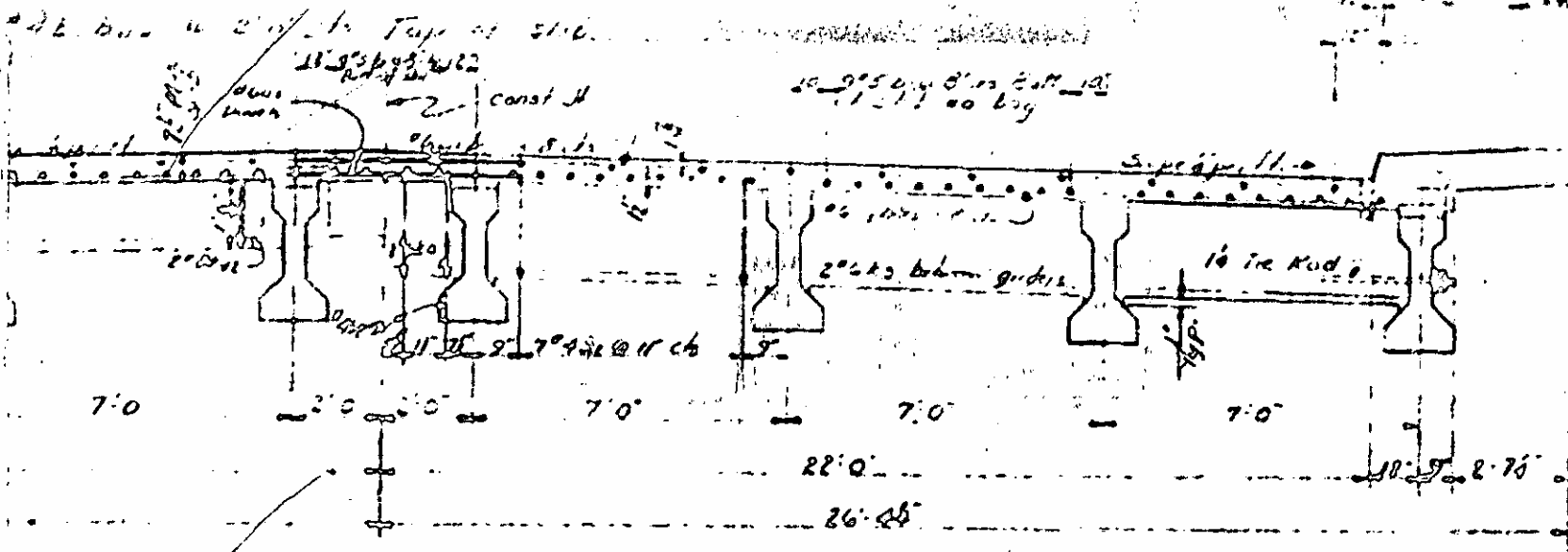
END ELEVATION



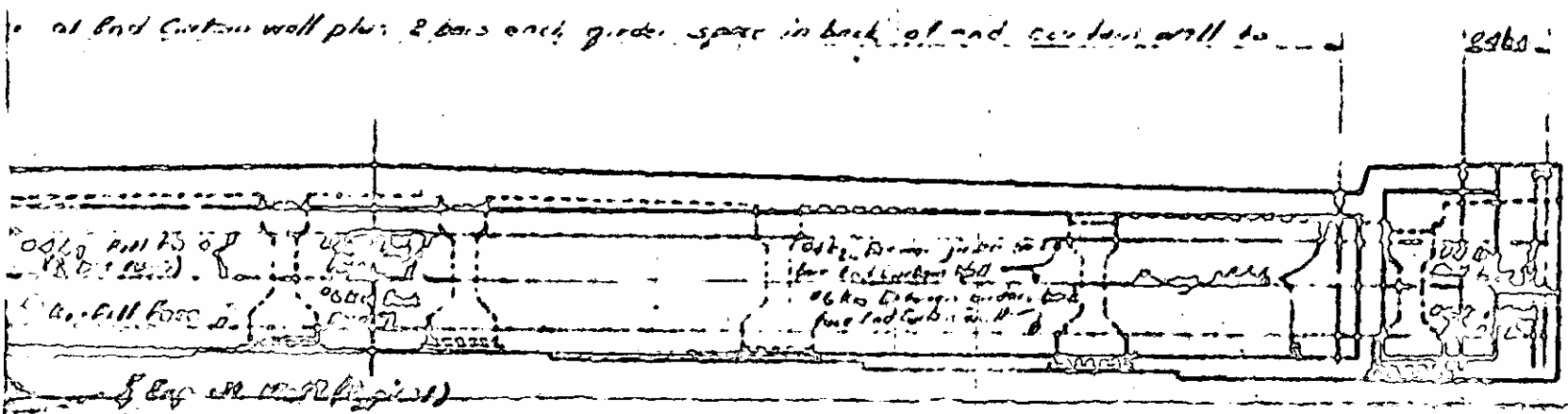
SECTION

SECTION

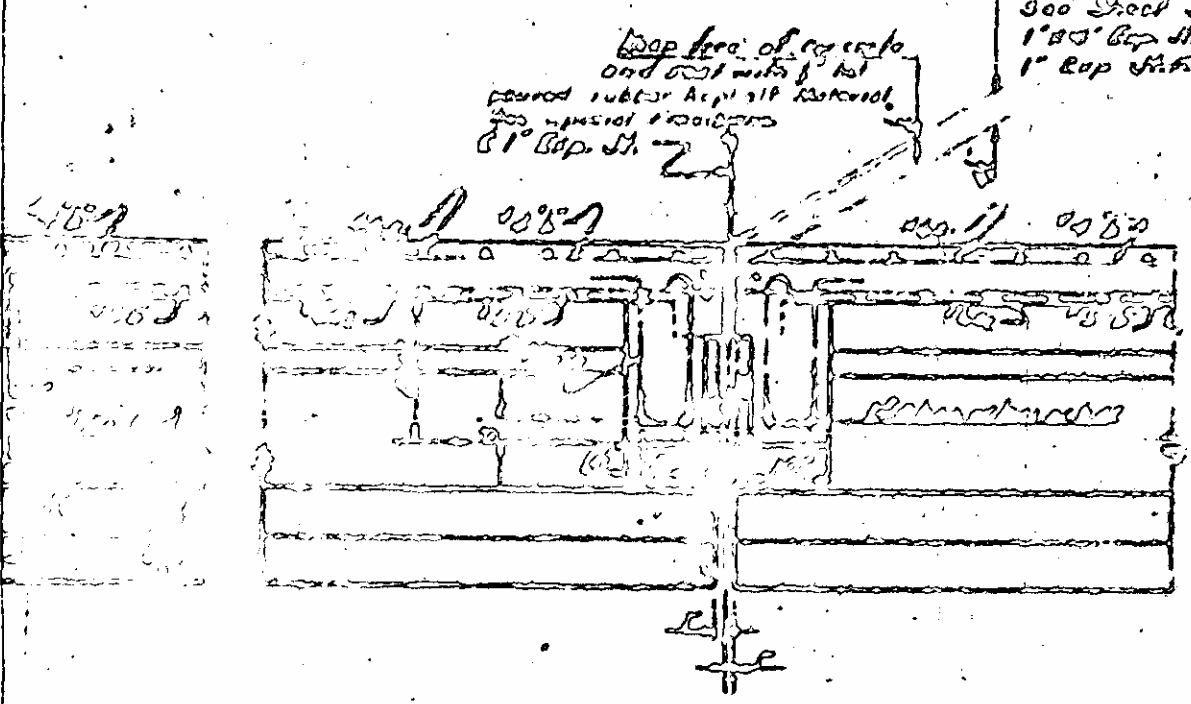




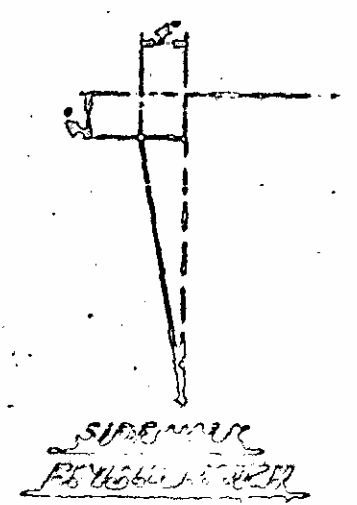
**PART SECTION
INTERMEDIATE DIAPHRAGM**



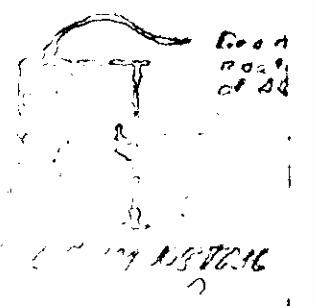
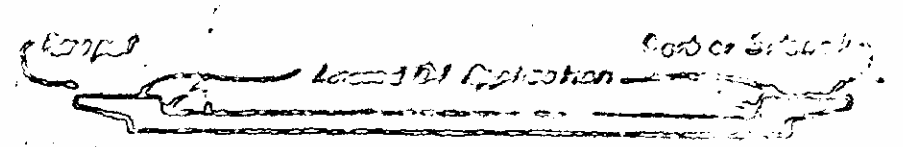
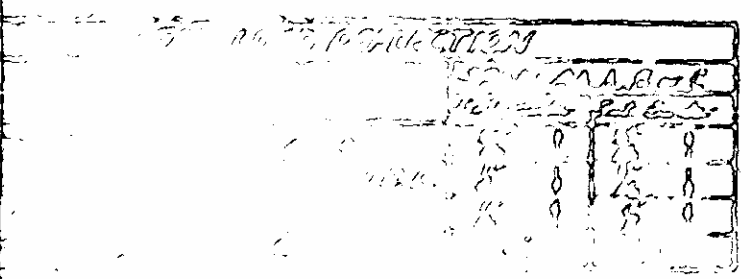
END ELEVATION



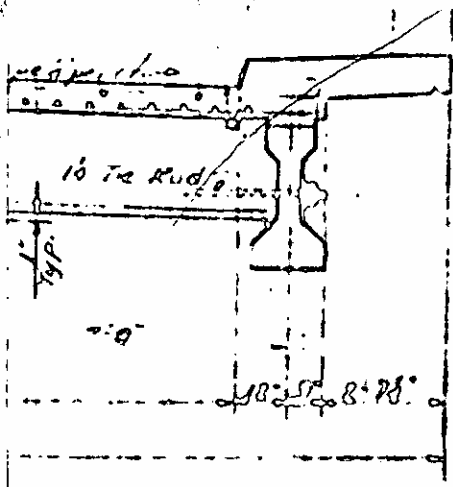
STATION B-B



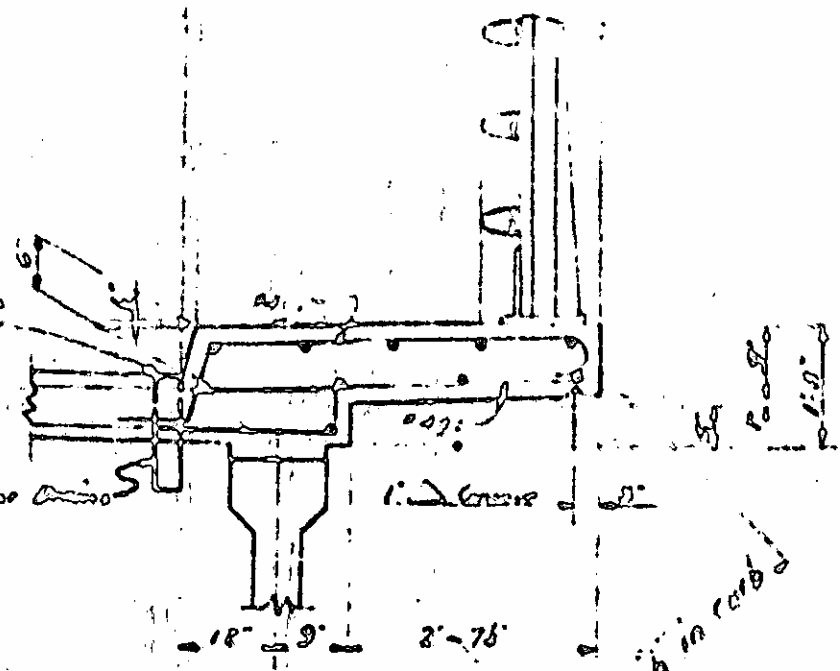
SHEAR FORCE DIAGRAM



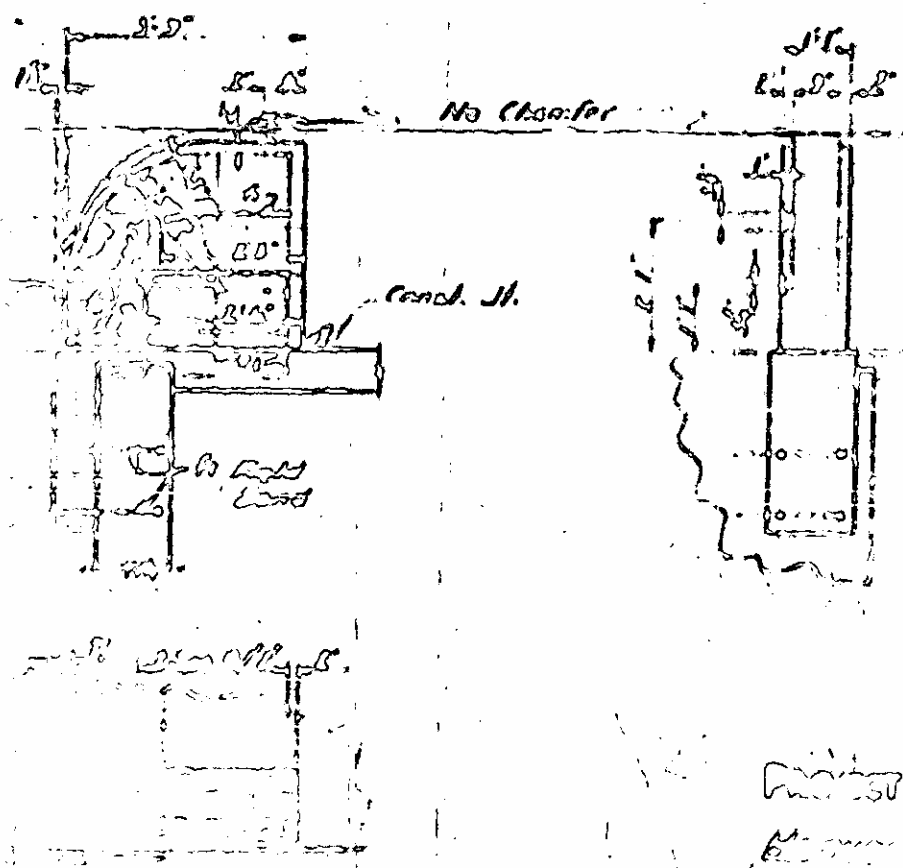
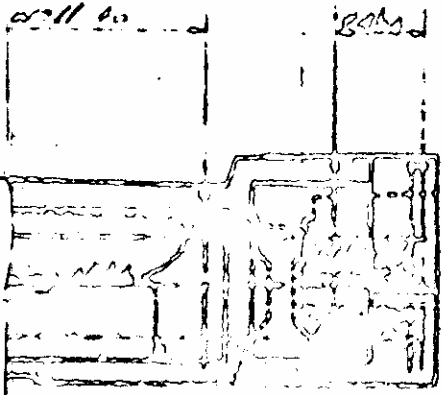
Handwritten notes and signatures at the bottom of the page, including '600 dia. S.I.' and other illegible text.



Tops of these drains
 to be set 20' below
 surface of slabs



SECTION THRU
 CURB & RAIL



END OF SECTION

PROJECT NO. 62
 STATION 100+00

Draw details on plastic pipe
 to be set 20' below
 surface of slabs
