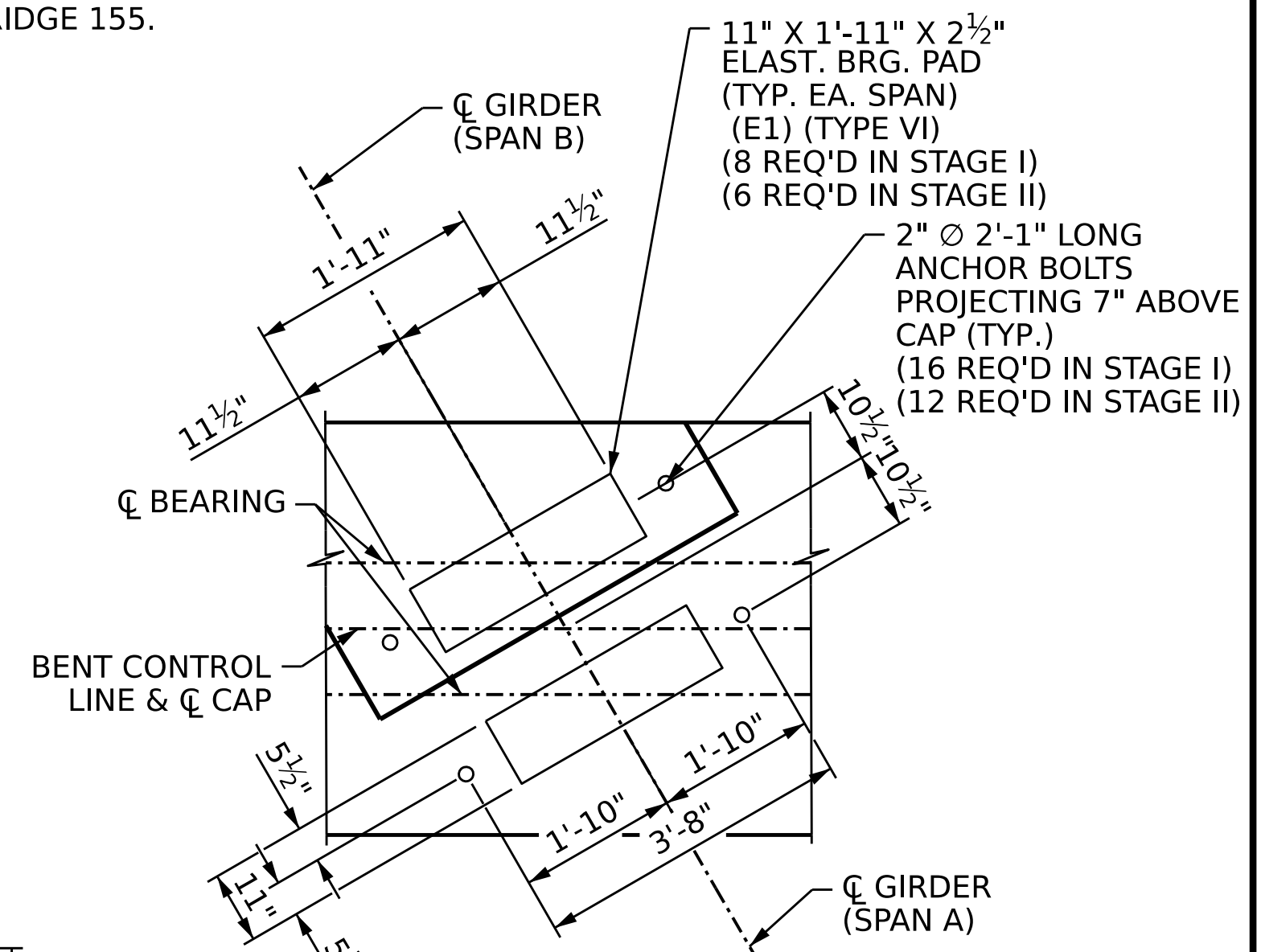


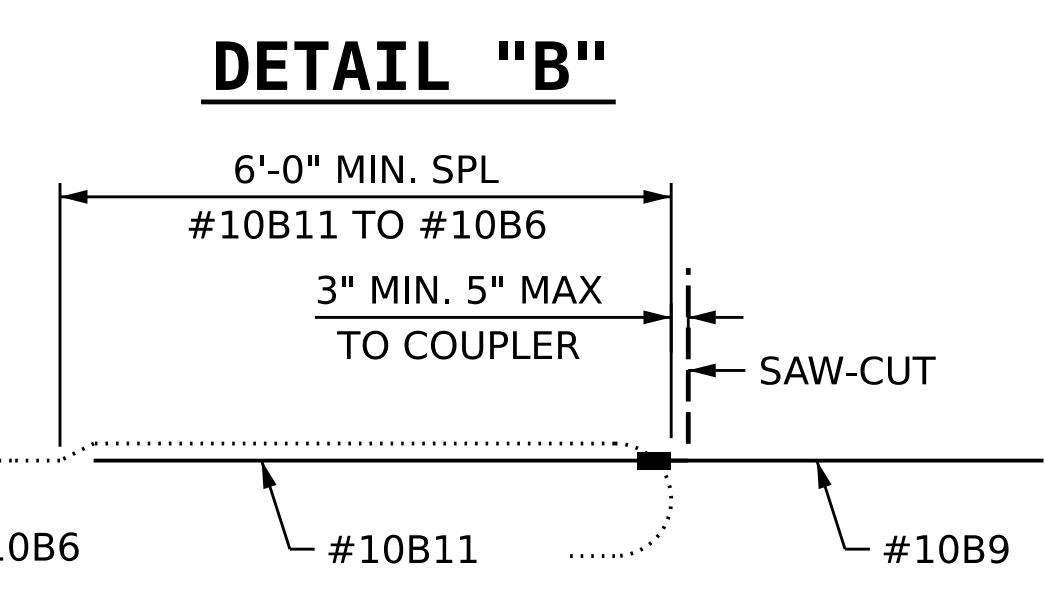
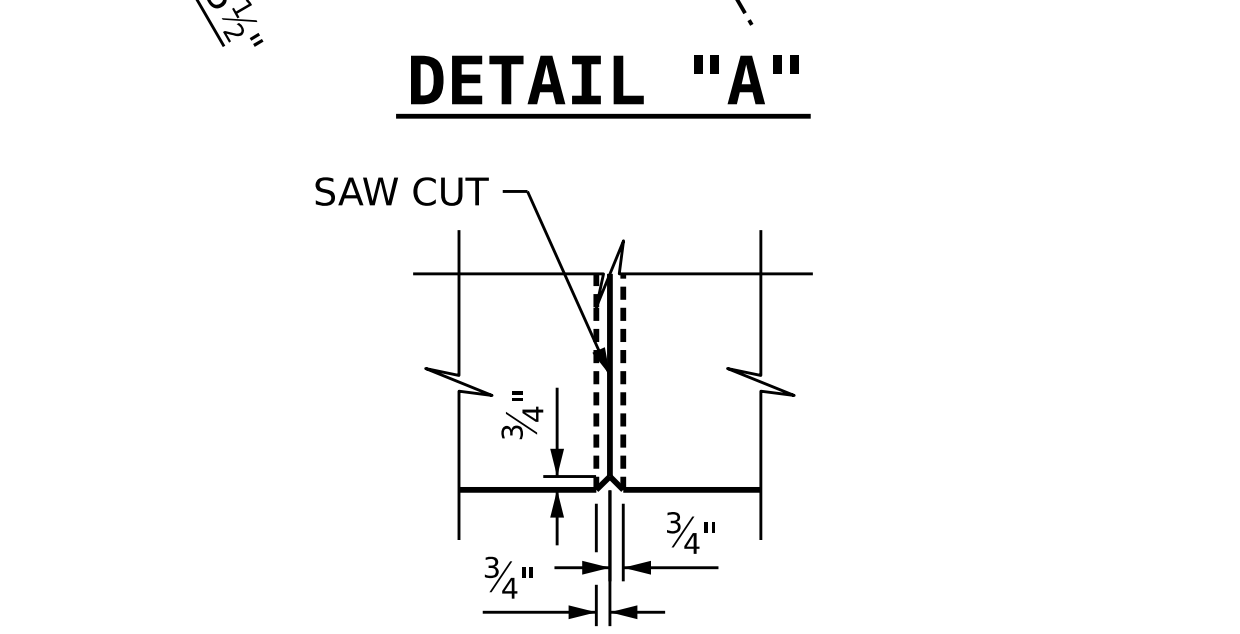
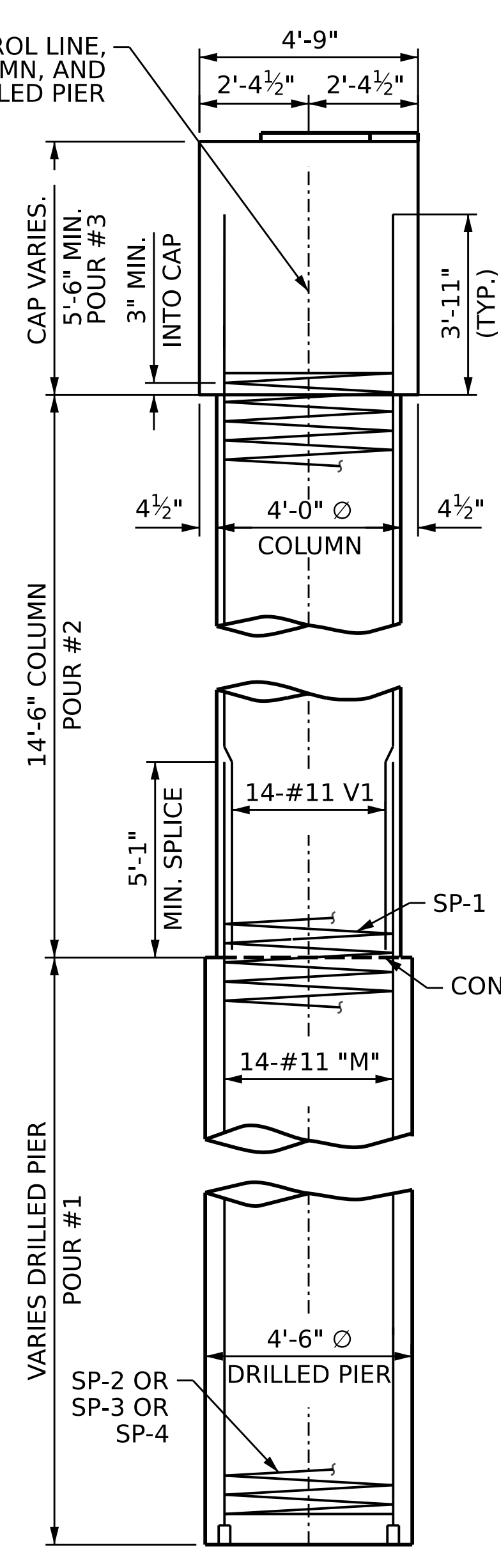
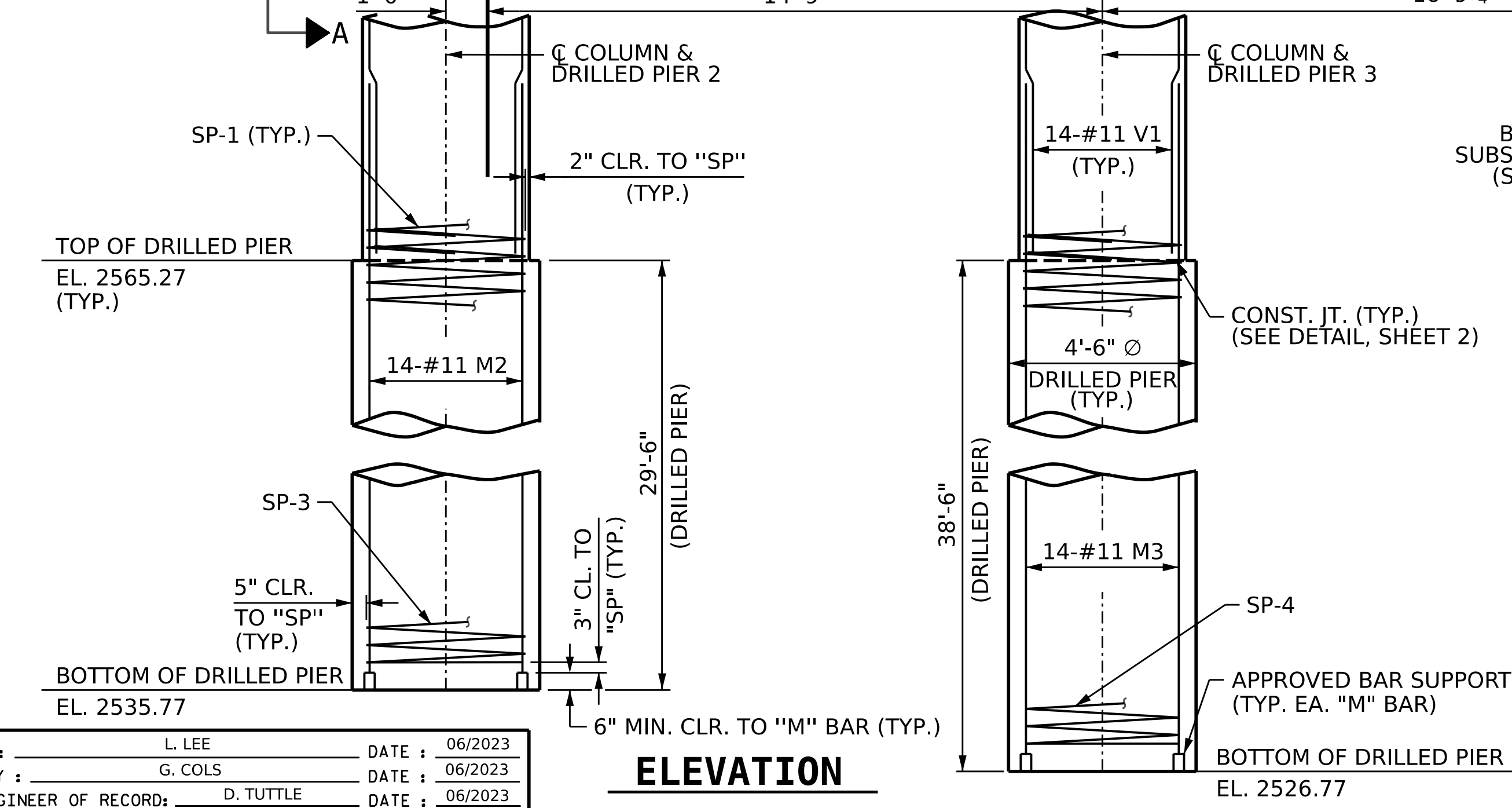
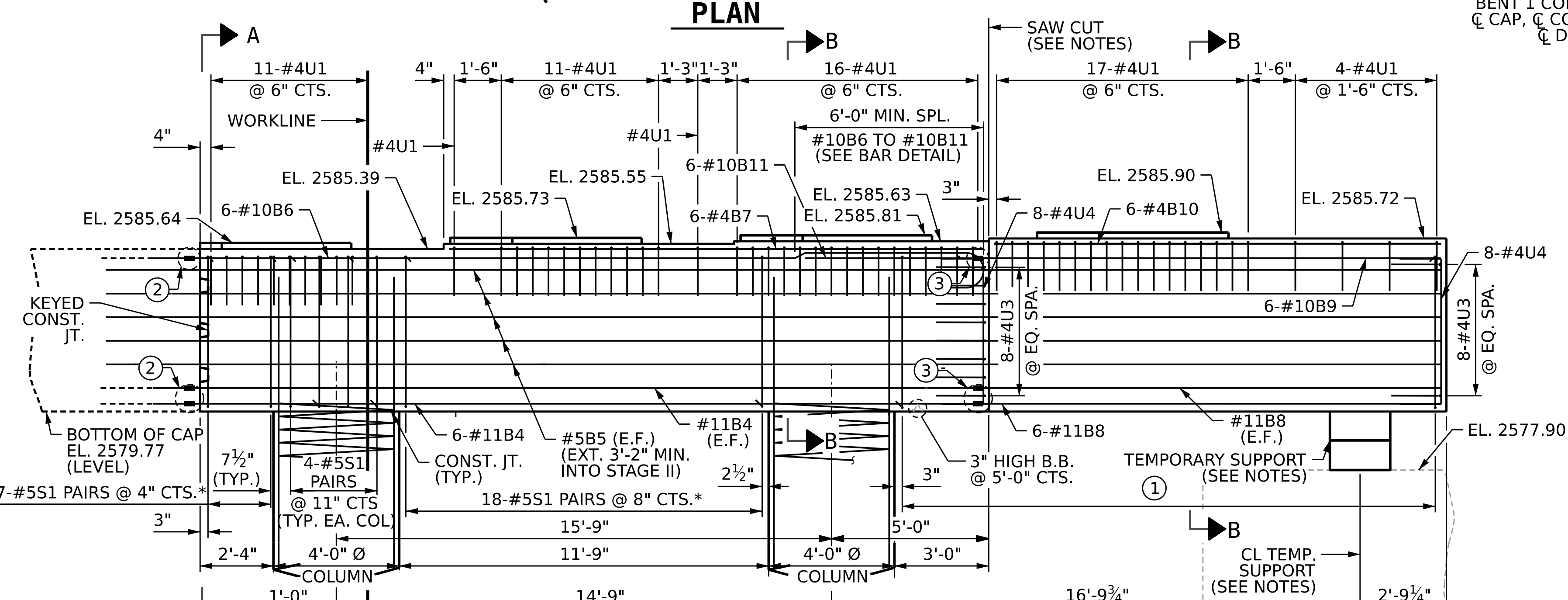
NOTES:
 FOR ADDITIONAL NOTES, SEE SHEET 3 OF 3.
 FOR SECTION A-A, B-B, SEE CAP END VIEW, KEYED CONST. JT. DETAIL, AND COLUMN/PIER CONST. JT. DETAIL SEE SHEET 2 OF 3.
 THE CENTERLINE OF THE TEMPORARY SUPPORT SHOULD BE AT THE CENTERLINE OF COLUMN 1 OF BRIDGE 155.

SPAN B



SPAN A

BENT 1 CONTROL LINE, \bar{C} CAP, \bar{C} COLUMN, AND \bar{C} DRILLED PIER



- ① 35-#5S1 PAIRS @ 6" CTS.* ENSURE PAIRS PROVIDE 2" CLR. TO SAW-CUT
 - ② MECHANICAL COUPLERS REQUIRED (SEE NOTES) (TYP.)
 - ③ THREADED MECHANICAL COUPLER REQ'D (SEE NOTES) (TYP. AT SAW CUT LOC.)
- *INVERT ALTERNATE PAIRS OF STIRRUPS

PROJECT NO. B-3186 / B-5898
HAYWOOD COUNTY
 STATION: 24+70.00 -L_LT-
 SHEET 1 OF 3

AECOM
AECOM TECHNICAL SERVICES OF NC, INC.
 5430 WADE PARK BOULEVARD, SUITE 200
 RALEIGH, NC 27607
 (919) 854-6200 www.aecom.com
 AECOM License No. F0342

DESIGNED BY: SPAL
 DATE: 04/29/23
 CHECKED BY: [Signature]
 DATE: 06/01/23
 IN SHANE TULLY

10/13/2023

STATE OF NORTH CAROLINA DEPARTMENT OF TRANSPORTATION RALEIGH					
SUBSTRUCTURE BENT 1 STAGE I					
REVISIONS					
NO.	BY:	DATE:	NO.	BY:	DATE:
1			3		
2			4		
SHEET NO. S3-37					TOTAL SHEETS 50

DRAWN BY: L. LEE DATE: 06/2023
 CHECKED BY: G. COLS DATE: 06/2023
 DESIGN ENGINEER OF RECORD: D. TUTTLE DATE: 06/2023

DOCUMENT NOT CONSIDERED
 FINAL UNLESS ALL
 SIGNATURES COMPLETED