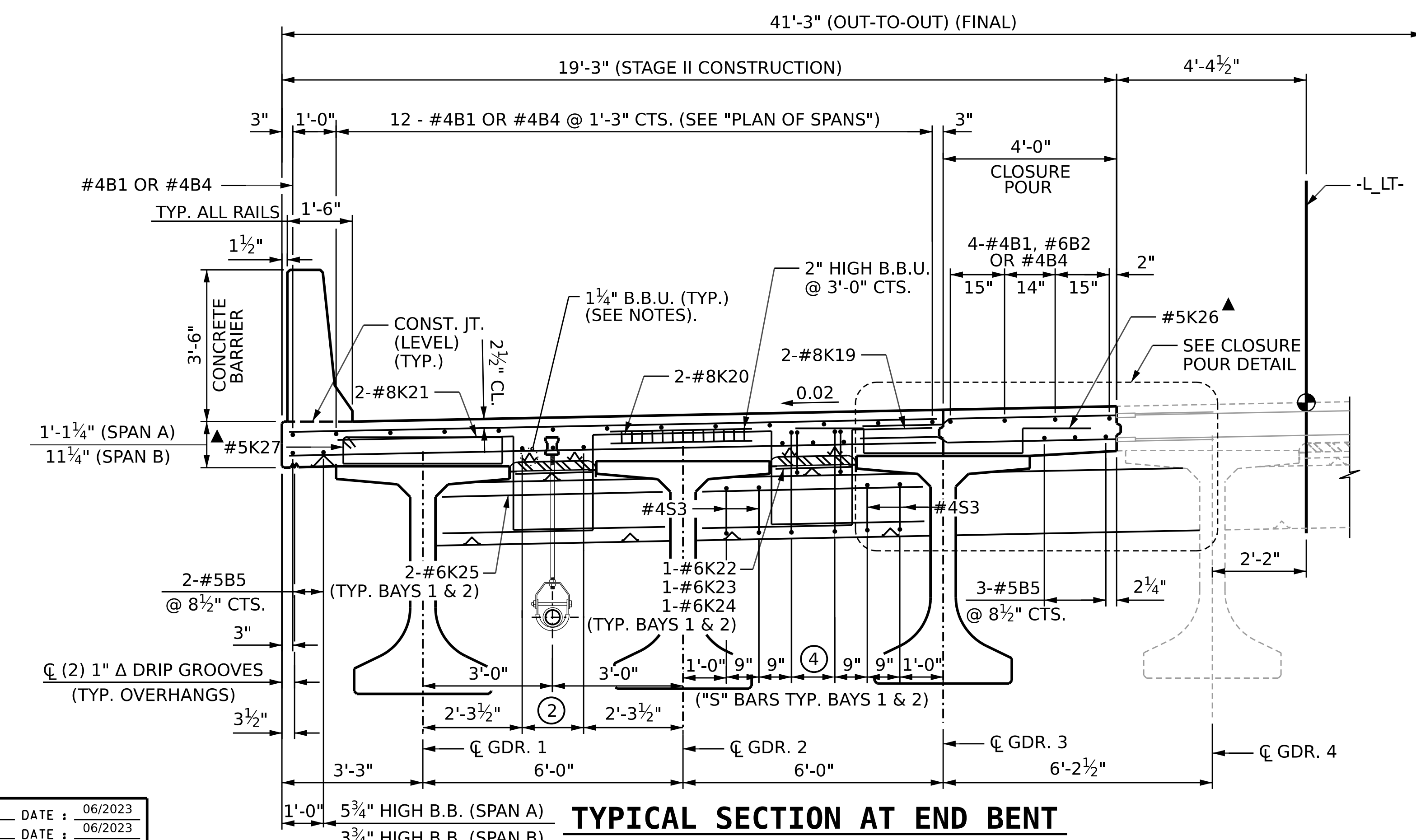
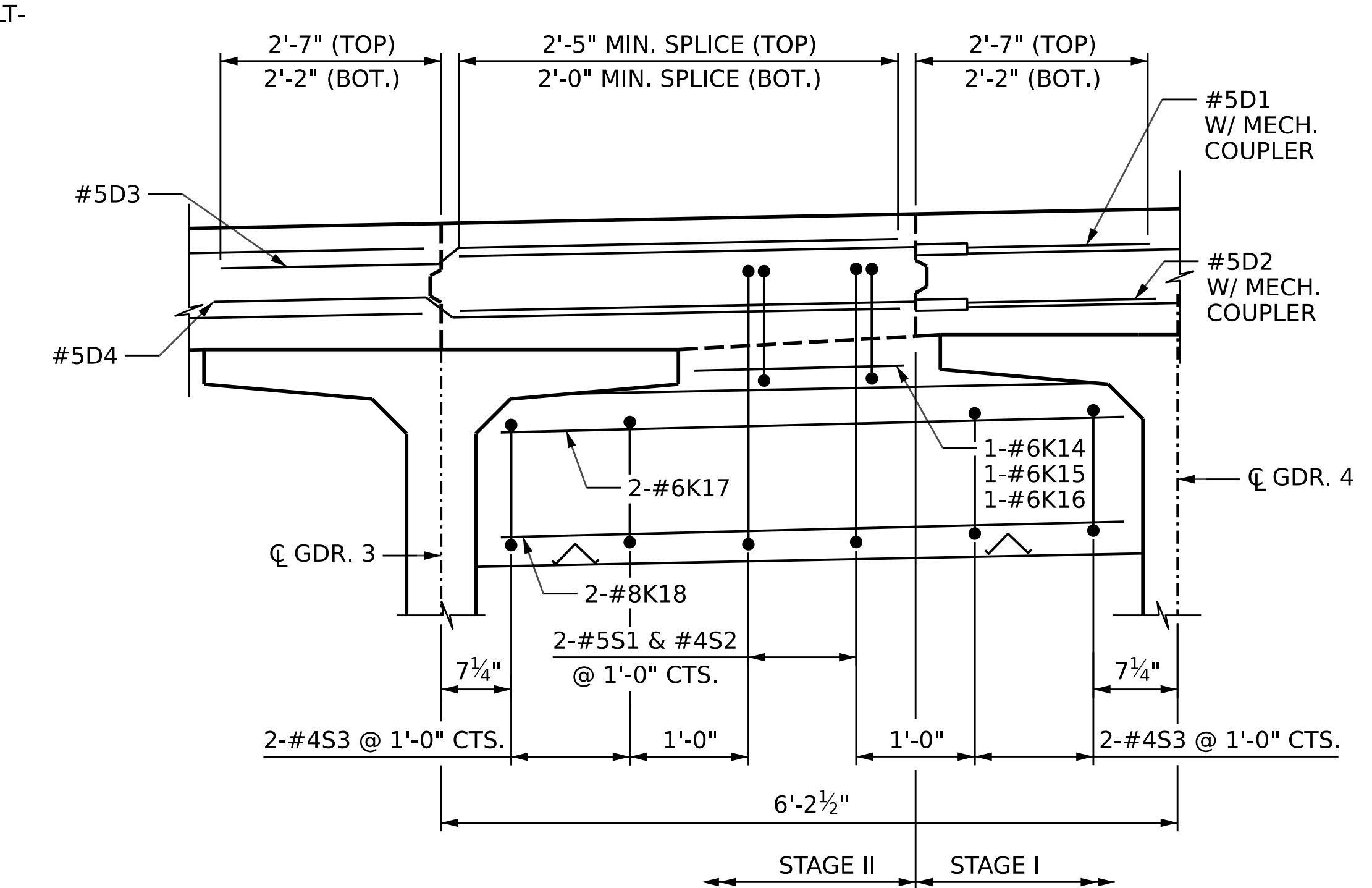


**TYPICAL SECTION AT LINK SLAB**



**TYPICAL SECTION AT END BENT**

**NOTES:**  
 FOR PART TYPICAL SECTION AT INTERMEDIATE DIAPHRAGM, SEE SHEET 1 OF 3  
 FOR NOTES, SEE SHEET 1 OF 3



**CLOSURE POUR DETAIL**  
 DECK CLOSURE POUR DETAIL AT END BENT

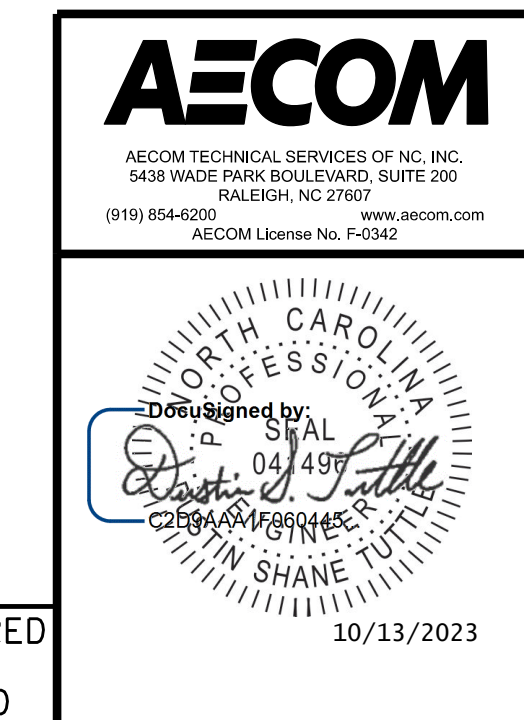
- ① 2 - #5B6 @ 8 1/2" CTS. (TYP. BAYS 1 & 2)
- ② 3 - #5B5 @ 8 1/2" CTS. (TYP. BAYS 1 & 2)
- ③ 2 - #5B5 @ 8 1/2" CTS.
- ④ 2 - #5S1 & #4S2 @ 1'-0" CTS. (TYP. IN BAYS 1 & 2)

▲ IN SPAN A ONLY, #5K26 BARS ARE PLACED ABOVE EACH GIRDER, TYING TO S9 BARS PROTRUDING FROM GIRDERS ALONG A DISTANCE OF 14'-6" FROM BOTH ENDS, EXCEPT IN THE LINK SLAB. #5K27 BARS ARE TO BE USED INSTEAD ABOVE GIRDER 1

**"B" BAR KEY**

- = NON-CONTINUOUS BAR RUN FOR NEGATIVE MOMENT REGIONS. SEE "PLAN OF SPANS" SHEET
- = CONTINUOUS BAR RUN SEE "PLAN OF SPANS" SHEET

PROJECT NO. B-3186 / B-5898  
HAYWOOD COUNTY  
 STATION: 24+70.00 -L\_LT-  
 SHEET 2 OF 3



STATE OF NORTH CAROLINA DEPARTMENT OF TRANSPORTATION RALEIGH		SUPERSTRUCTURE			
<b>TYPICAL SECTIONS</b>					
STAGE II					
REVISIONS					
NO.	BY:	DATE:	NO.	BY:	DATE:
1			3		
2			4		
SHEET NO.			S3-09		
TOTAL SHEETS			50		

DRAWN BY: M.L. CATER DATE: 06/2023  
 CHECKED BY: D. TUTTLE DATE: 06/2023  
 DESIGN ENGINEER OF RECORD: D. TUTTLE DATE: 06/2023

DOCUMENT NOT CONSIDERED FINAL UNLESS ALL SIGNATURES COMPLETED