

### NOTES

THE COST OF THE BARRIER RAIL ON THE APPROACH SLAB SHALL BE INCLUDED IN THE LINEAR FOOT CONTRACT PRICE BID FOR "CONCRETE BARRIER RAIL".

THE BARRIER RAIL ON EACH APPROACH SLAB SHALL NOT BE CAST UNTIL ALL APPROACH SLAB CONCRETE HAS BEEN CAST AND HAS REACHED A MINIMUM COMPRESSIVE STRENGTH OF 3,000 PSI.

ALL REINFORCING STEEL IN BARRIER RAILS SHALL BE EPOXY COATED.

SHIFT, BEND, OR CUT REINFORCING STEEL AS NECESSARY TO CLEAR BLOCKOUT.

### BILL OF MATERIAL

#### CONCRETE BARRIER RAIL

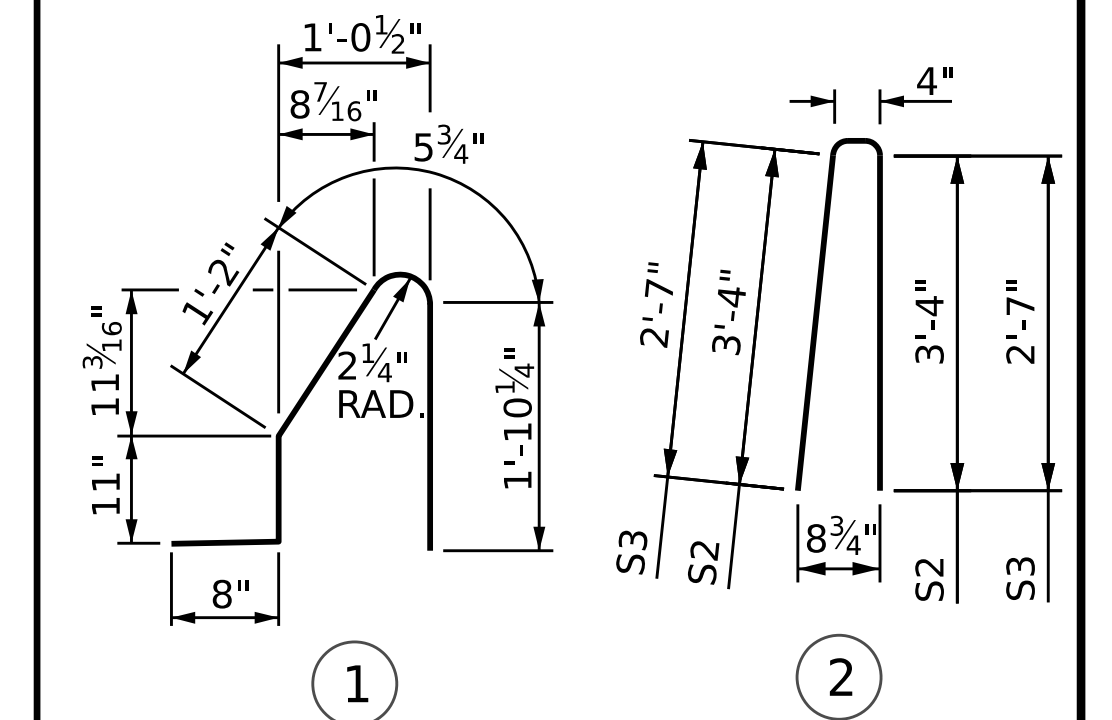
BAR	NO.	SIZE	TYPE	LENGTH	WEIGHT
* B1	22	5	STR	24'-7"	564
* S1	52	5	1	5'-1"	276
* S2	47	5	2	7'-0"	343
* S3	5	5	2	5'-6"	29

\* EPOXY COATED REINFORCING STEEL 1,212 LBS.

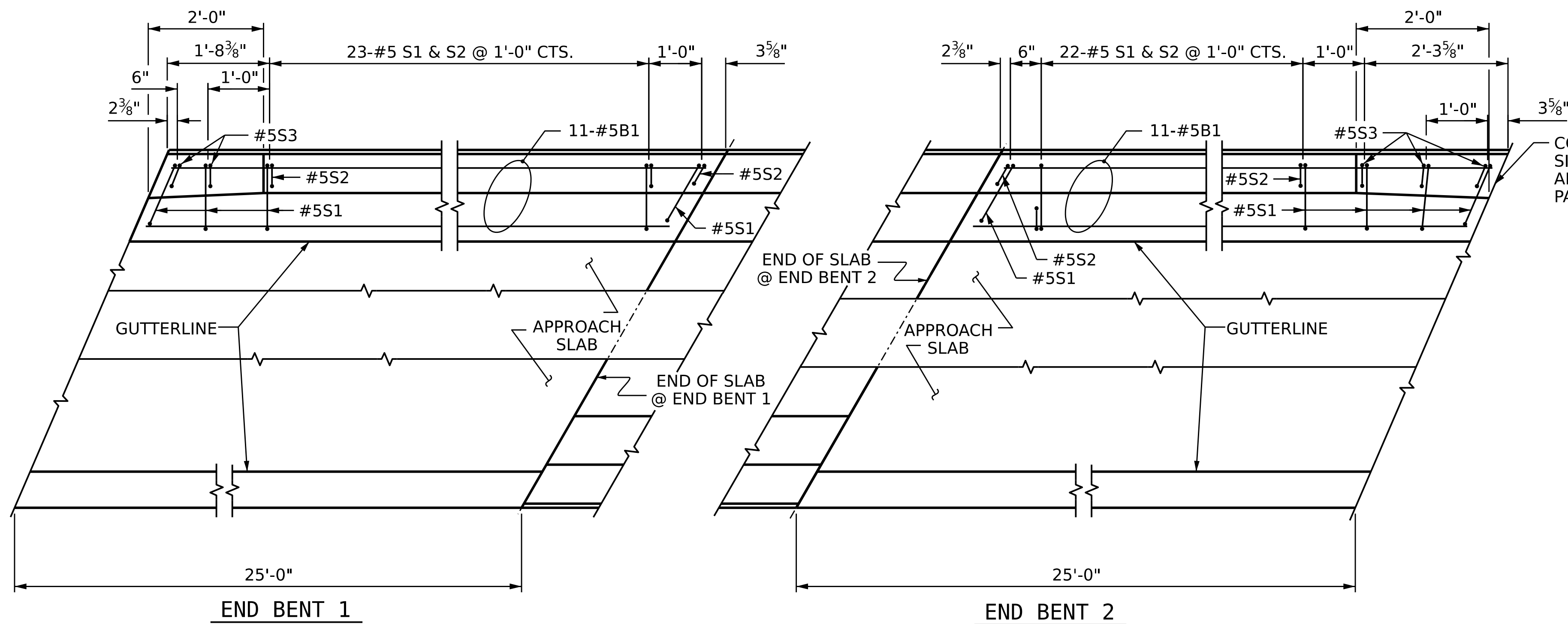
CLASS AA CONCRETE 6.8 C.Y.

CONCRETE BARRIER RAIL 50.0 L.F.

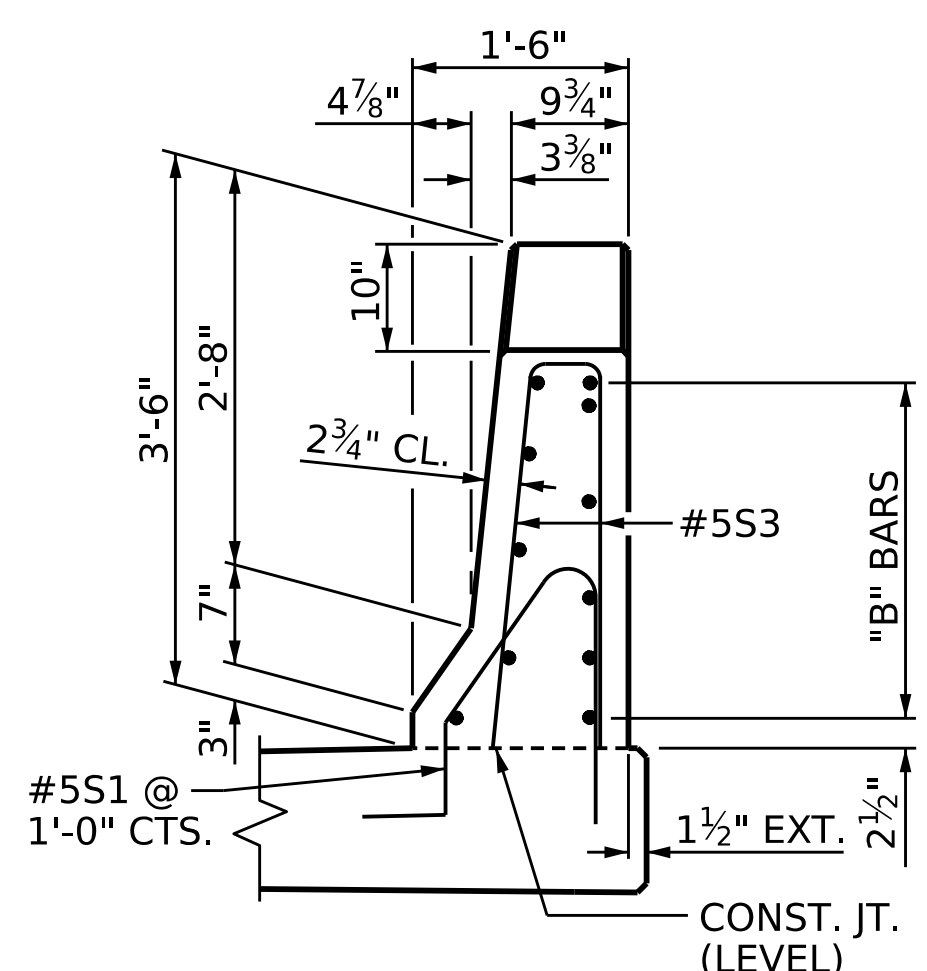
#### BAR TYPES



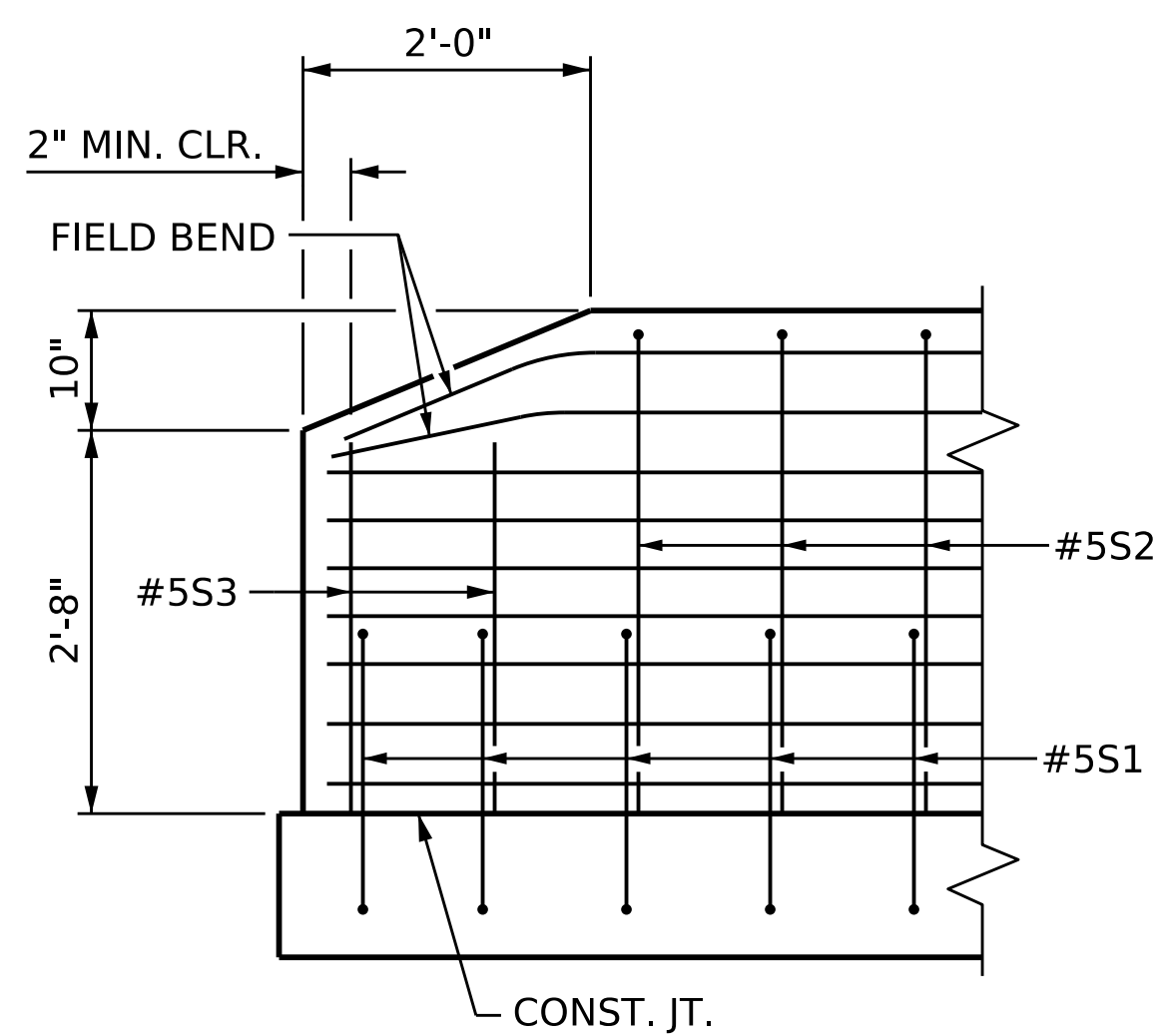
ALL BAR DIMENSIONS ARE OUT TO OUT.



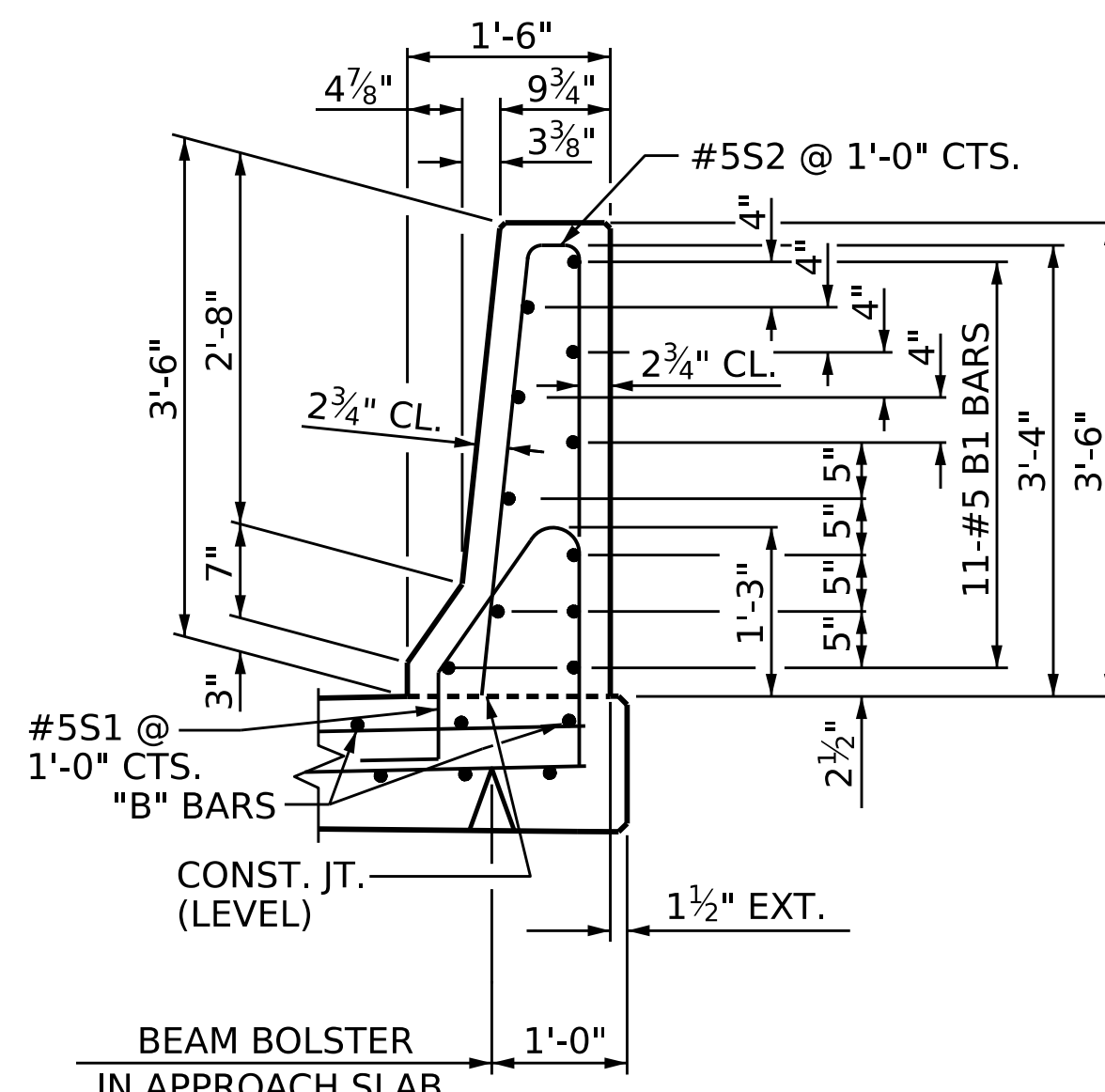
**PLAN OF BARRIER RAIL**



END VIEW



SIDE VIEW



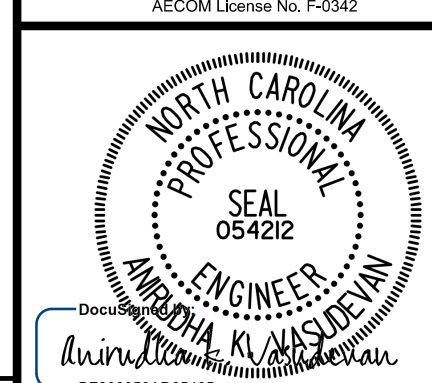
SECTION THRU RAIL

PROJECT NO. B-3186 / B-5898

HAYWOOD COUNTY

STATION: 24+42.26 -L\_RT-

SHEET 3 OF 3



STATE OF NORTH CAROLINA  
DEPARTMENT OF TRANSPORTATION  
RALEIGH

### APPROACH SLAB DETAILS

REVISIONS						SHEET NO.
NO.	BY:	DATE:	NO.	BY:	DATE:	S2-31
1			3			TOTAL SHEETS
2			4			31

DOCUMENT NOT CONSIDERED FINAL UNLESS ALL SIGNATURES COMPLETED

10/18/2023

DRAWN BY : A.R. VAN VUREN DATE : 07/2023  
CHECKED BY : A.K. VASUDEVAN DATE : 07/2023  
DESIGN ENGINEER OF RECORD: A.K. VASUDEVAN DATE : 07/2023